

the Conservationist

A Quarterly Publication of the Forest Preserve District of DuPage County

Spring 2024



They're Baaack!

17-Year Cicadas: When They're Coming and What to Expect

The Moon's Big Show

April's Solar Eclipse

Spring Calendar



Forest Preserve District of DuPage County

from the president



Spring is known as the season when everything starts to come alive, when everything begins to blossom and change and people are eager to get outside. This spring especially, DuPage forest preserves are going to be the place to go to experience some rare natural events.

First off, we'll be witnessing a near total solar eclipse on April 8. You can read how this affects wildlife and how to safely view the eclipse in "The Moon's Big Show" on Page 16. Then, over a much longer time period we'll be experiencing the return of the 17-year cicadas, a remarkable phenomenon that illustrates how some of the area's wild creatures have developed amazing methods for survival. You can find out why 2024 is going to be a rare emergence in "They're Baaack" on Page 6.

Of course, we'll also have some DuPage forest preserve exclusives, such as our springtime programs, which are featured in this issue's calendar and include our annual Native Plant Sale. The sale will be on May 17 and 18, but you can begin to peruse the catalog starting March 1 on dupageforest.org.

Late last year the District conducted a countywide survey to assess the level of support, use, and opinions of our residents. The results show a high level of support for the agency. Of those surveyed, 82% have a favorable view of the District, and 60% believe we offer a positive value relative to our property tax share. On a scale of 1 to 10, we ranked 8.3 in overall experience and satisfaction, cleanliness, maintenance, upkeep, and access.

But we also found that many people are still not aware of all the great open spaces, programs, and activities the forest preserves offer. That's why this spring we're kicking off a special campaign designed to spread the word. You can join our efforts by talking about your own forest preserve experiences with friends and neighbors and following and sharing our posts on social media. Help us ensure that no one misses out on the different ways to enjoy spring in DuPage forest preserves!

Daniel Hebreard

President, Forest Preserve District of DuPage County



BOARD OF COMMISSIONERS

President

Daniel Hebreard, Woodridge

Commissioners

Marsha Murphy, Bloomingdale — District 1

Tina Tyson-Dunne, Lombard — District 2

Linda Painter, Hinsdale — District 3

Jeff Gahris, Wheaton — District 4

Barbara O'Meara, Naperville — District 5

Al Murphy, West Chicago — District 6

Executive Director

Karie Friling



BOARD MEETINGS

For schedules and agendas or to watch live or recorded meetings, visit dupageforest.org.



THE CONSERVATIONIST

Spring 2024, Vol. 61, No. 2

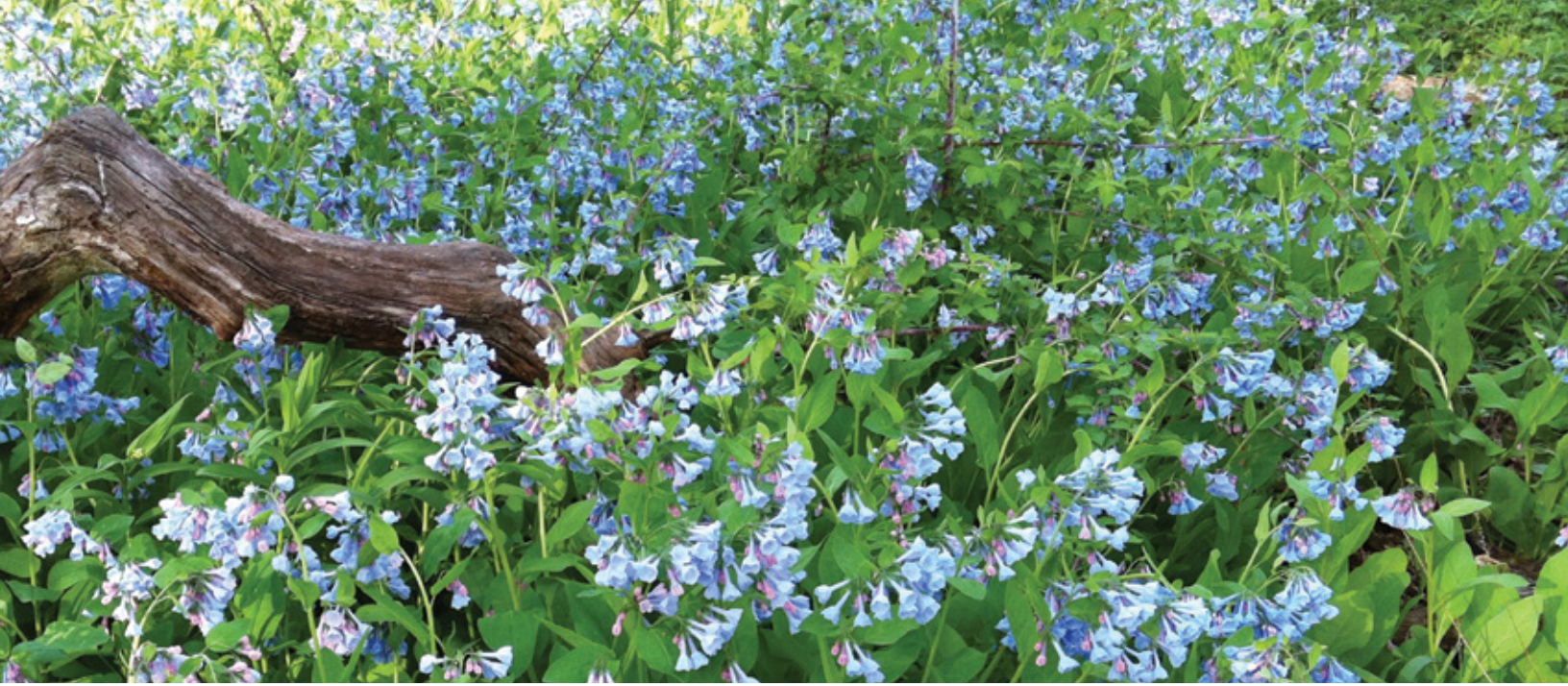


FOREST PRESERVE DISTRICT OF DUPAGE COUNTY

35580 Naperville Road, Wheaton, IL 60189
630-933-7200, TTY 800-526-0857

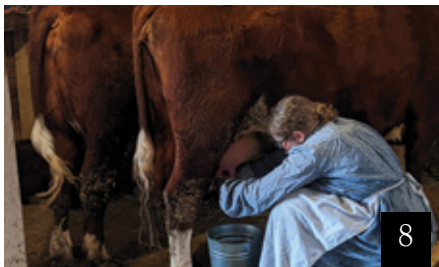
dupageforest.org

The Conservationist is a quarterly publication of the Forest Preserve District of DuPage County. Subscriptions are free for DuPage County residents and \$5 per year for nonresidents. To subscribe or unsubscribe, call 630-933-7085 or email forest@dupageforest.org. You can also read this and previous issues 24/7 at dupageforest.org. To receive an email when each new issue is available online, email forest@dupageforest.org.



contents

Vol. 61, No. 2 | Spring 2024



- 4 **News & Notes**
- 6 **They're Baaack!**
- 8 **Spring Calendar**
- 16 **The Moon's Big Show**
- 18 **Directory**
- 19 **Map**

On the cover: 17-year cicada ©smuller

OUR *Mission*

To acquire and hold lands for the purpose of preserving the flora, fauna and scenic beauty for the education, pleasure and recreation of DuPage County citizens

news & notes



COLLECTIONS *Corner*

With all the buzz about 17-year cicadas, "Collections Corner" just had to join the fun!

The Forest Preserve District's natural history collection has a drawer dedicated to the annual and periodical cicadas of DuPage. One section has annual dog day and scissor-grinder cicadas, which appear here each summer. But the larger section has two species of 17-year periodical cicadas, Cassin and Linnaeus, most collected in 2007 during the area's last emergence. Interestingly, just as a few members of this year's brood emerged one or two years early, there are three Cassin specimens from the 2007 brood collected in 2003. Keeping these specimens in the collection allows staff to record the biological diversity of the species and document changes over time.

Stop by Fullersburg Woods Nature Education Center while the cicadas are buzzing to see this collection and gaze upon the ancestors of these marvelous creatures!

WHERE NATURE AND ART MEET

The District is gearing up to cohost a special summer and fall exhibit led by the College of DuPage Public Art Project, the DuPage Convention and Visitors Bureau, and the Mexican Cultural Center DuPage. Select forest preserves and other sites across DuPage will display fiberglass sculptures representing the ancient Mesoamerican Olmec culture. The original large-scale stone Olmec heads are recognized as important examples of pre-Columbian art. Each sculpture will be uniquely painted by U.S. and international artists.

The exhibit will support District efforts to connect people to nature at its preserves and education sites while promoting environmental awareness, cross-cultural understanding, and the preservation of cultural heritage. It will also reinforce the District's long-standing formal partnership with the visitors bureau.

The District's investment will be limited to in-kind contributions of staff time to coordinate and promote the exhibit. Visit dupageforest.org later this spring for the locations and descriptions of these amazing works of art.



THANK YOU, VOLUNTEERS!

In recognition of National Volunteer Week, April 21 - 27, the Forest Preserve District applauds its 734 long-term volunteers and 80 volunteer groups. Last fiscal year, these dedicated individuals donated more than 57,000 hours with an in-kind value of nearly \$1.9 million!



LIVE *and on Demand*

Can't make it to a board meeting? Find schedules and agendas and watch it live or on demand at dupageforest.org under "About Us" and "Our Board." Commission meetings and planning sessions are open to the public and held at Forest Preserve District headquarters at 35580 Naperville Road in Wheaton.

Normally, commission meetings are at 8 a.m. on the first and third Tuesdays of the month; planning sessions, 8 a.m. on the second and fourth Tuesdays. At both the board hears public comments and staff reports, discusses business, and votes on agenda items.

IF YOU CARE, LEAVE THEM THERE

With the arrival of the spring breeding season, Willowbrook Wildlife Center reminds residents that it's normal for wildlife to leave young alone for hours at a time while they look for food. Human intervention may be helpful, though, if an animal is injured or truly abandoned. Call Willowbrook at 630-942-6200, or email willowbrook@dupageforest.org for guidance. Calls are answered daily 9 a.m. - 4 p.m., and recordings provide after-hours info.



THANK YOU *for Being a Friend*

The Friends of the Forest Preserve District of DuPage County is a 501(c)(3) that engages the community in philanthropy to advance the mission of the Forest Preserve District. We are grateful to those who donated \$500 or more (including cumulative donations) through the Friends or to the District during last year's fourth quarter.

Gift of \$50,000 or More

Navistar, Inc.

Gift of \$25,000 – \$49,999

TC Energy

Gifts of \$10,000 – \$24,999

G. Carl Ball Family Foundation
Schwab Charitable

Gifts of \$5,000 – \$9,999

James and Karen Click
Dan Soline
Susan Trommer

Gifts of \$3,500 – \$4,999

Larry Larson
Mary J. Demmon Private Foundation
Michael and Diane Webb

Gifts of \$2,000 – \$3,499

Mary and Harold Bamford III
Elaine Novak Jans
Carol McGee
Robert Miller
Jerry and Jody Zamirowski

Gifts of \$500 – \$1,999

Anonymous
Diane and Joe Addante
Coral Baran
Seth Becker and Helen Nam
Helena Borenius
Robert and Marcy Cap
James and Valerie Carroll
Chicago Ornithological Society
Jennifer Chidlow
Cheryl Clark
DuPage Birding Club
Howard Goldstein and Peggy McGrath
Corryn Greenwood
Judith Grey
H. Susan Jones Charitable Fund of
DuPage Foundation
Paul Herbert
Keith and Tracy Hernandez
Izzie's Garden
Ryan and Jeannine Kannegiesser
Tim and Kelsey Letizia
Lombard Juniors Philanthropic Fund
Mary Ann Mahoney

Gifts of \$500 – \$1,999 (Continued)

Guy and Sharon Matthew
Belinda Morgan
Naperville Animal Control
Roger and Susan Nelson
Donald and Susan Panozzo
John Schofield
John and Maria Shalanko
Steven and Megan Shebik
Janet Strain
Steven Szafranski
John and Marion Tableriou
Terri Tarka
Diane Telander
Frank and Patricia Troost
Robert Watt
West Chicago Garden Club
Heather and Mark Yeager
Doug Zimmer

In 2023 over 1,000 individuals, corporations, and foundations donated to advance the Forest Preserve District's mission. Thanks to their generosity, the Friends was able to grant \$253,251 to the District for wildlife rehabilitation at Willowbrook Wildlife Center (60%); the Mayslake Peabody Estate Master Plan (25%); educational programs (6%); habitat restoration (4%); recreational amenities and improvements (3%); and the Blanding's turtle head-start program (2%). For more about the Friends and opportunities for partnerships and donations, contact fundraising@dupageforest.org or 630-871-6400.



© Andrea Kautz

They're Baaack!

The Return of the Periodical Cicadas

by **MATT MULLIGAN**, ECOLOGIST, NATURAL RESOURCES

The year 1803 was a notable one in U.S. history. Thomas Jefferson was president, the country nearly doubled in size with the Louisiana Purchase, and Ohio became the 17th state in the union. It was also the year of a spectacular natural phenomenon: the joint emergence of two broods of periodical cicadas. This spring and summer will mark the first time in 221 years this will happen again, and one of the broods will be here in DuPage.

Cicadas have an interesting journey of development. As young nymphs, they spend years underground, feeding on fluids from the roots of trees. After they surface as adults, they climb to high locations and go through one last molt, emerging soft and white from their rigid exoskeletons. You can often find the remaining hollow shells attached to tree trunks or on the ground. After a few short days, their wings and new exoskeletons dry and harden, and the insects fly away.

To attract females, male cicadas produce loud distinctive calls that can seem deafening to anyone standing nearby. After

mating, the females puncture the twigs of trees and shrubs and lay their eggs inside. Days later, the eggs hatch, and the newborn cicadas fall and burrow into the soil, starting the process again.

Annual dog day cicadas spend between two to five years underground, and there are always adults emerging every July and August. They're 1.25 to 1.5 inches long and have green to brown bodies with black markings and whitish undersides. Periodical cicadas, though, burrow for 13 or 17 years, depending on the species, and emerge all in the same year. Seven different types live in eastern North America: three 17-year species generally in the north and four 13-year in the south and Midwest. Adults are about an inch long and have black bodies, striking red eyes, orange wing veins, and a black **W** near the tips of their forewings.

After their final molt, male periodical cicadas live about two weeks. Females live four to six, during which time each can lay up to 600 eggs. Young the size of small ants hatch after

six or seven weeks, fall to the ground, and burrow. When they emerge 13 or 17 years later, they exit through openings in the ground about half the diameter of a penny.

As in 1803, this year, 17-year cicadas (called Brood XIII) and 13-year cicadas (called Brood XIX) will emerge at the same time. It's weather-dependent, but the peak will likely be between May and June. Before you anticipate a double dose, though, know that here in Illinois, the two broods will emerge adjacent to one another but will likely not overlap. In DuPage, we'll see Brood XIII; Brood XIX will appear further south. According to maps and records from the Illinois Natural History Survey, the transition zone will likely be between Kankakee, Chebanse, and Clifton as you head south on I-57. There are no guarantees, but if you're interested in trying to experience both broods at the same time, your best bet would be a short car ride to a public green space with mature trees along this stretch.

There are physical differences between broods, but the average observer will likely not notice them. Different cicada species, for instance, can produce different sounds, patterns, and frequencies. Each species has its own song so as not to attract females from another species. If you're interested in trying to hear the differences, you can find links to several cicada calls at cicadamania.com.

Here in DuPage, it should be easy to find 17-year cicadas in backyards and forest preserves, whether you're a trained scientist or a curious first-time observer. Because periodical cicadas emerge all in the same year, they arrive in high densities that can range from over a million per acre to a more typical several thousand per acre. They're virtually defenseless from predators such as birds, spiders, snakes, and dogs, so they rely on this safety in numbers to ensure enough individuals survive to produce the next generation.

If (well, more likely when) you encounter a cicada, you have nothing to fear. They don't bite or sting, and they typically keep to themselves. They can startle you, though, especially the males, which call not only to attract mates but also to deter perceived threats.

When you're out, bring binoculars if you want to spot cicadas up high attached to large trees, but you can usually see them on the ground without any help. They typically fly and buzz during the day with peak activity from afternoon through dusk, so you'll have plenty of opportunities to enjoy the show.

As you're out observing, consider taking photos and posting them to community science apps such as iNaturalist or Cicada Safari. Both apps are free and allow you to share sightings with specialists so they can better understand nature on a regional scale. In DuPage forest preserves you can catalog your cicada or other nature observations in iNaturalist at inaturalist.org/projects/forest-preserve-district-of-dupage-county.

To experience this rare natural event to the fullest in the forest preserves, check out our lineup of "Cicada Adventures" programs on Page 10. And as you explore the preserves this May and June, relish the fact that you are part of something that lasts for only six weeks but was over 200 years in the making! •



© Tony Campbell/istock.adobe.com

▲ A cicada molts for one last time. Once the exoskeleton hardens and the wings unfurl, it will be a winged adult.



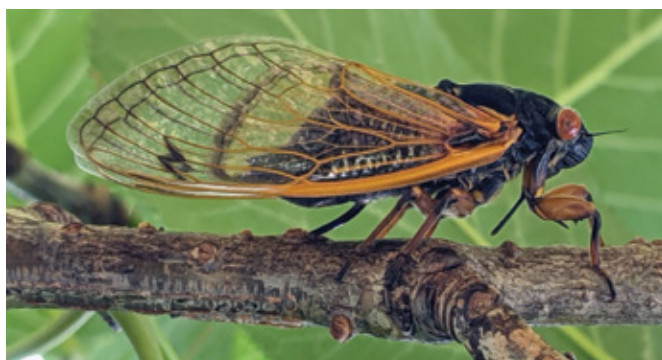
© Benjamin Stock/istock.adobe.com

▲ Animals gorge on periodical cicadas, but the enormous broods ensure there'll be survivors to lay eggs for the next generation.



© Adam Kranz

▲ A small thin membrane called a tymbal below a cicada's wings is responsible for the insect's tremendous calls.



© Martin Kalafatic

▲ A female 17-year periodical cicada uses its ovipositor at the end of its abdomen to pierce a small twig and deposit its eggs.

spring calendar

Plants & Wildlife	Page 10	Living Green	Page 12
Ways to Play	Page 10	Heritage	Page 13
Health & Well-Being	Page 12	Nature Art & Culture	Page 14
		Volunteer	Page 15



S	M	T	W	T	F	S
	1	2	3	4	5	6
7	8	9	10	11	12	13
14	15	16	17	18	19	20
21	22	23	24	25	26	27
28	29	30	apr			

S	M	T	W	T	F	S
may			1	2	3	4
5	6	7	8	9	10	11
12	13	14	15	16	17	18
19	20	21	22	23	24	25
26	27	28	29	30	31	

S	M	T	W	T	F	S
jun						1
2	3	4	5	6	7	8
9	10	11	12	13	14	15
16	17	18	19	20	21	22
23	24	25	26	27	28	29
30						

April

- | | | |
|--|---|---|
| <ul style="list-style-type: none"> 1 Forest Hike 2 Native Landscaping: Creating Your Garden Plan 3 Evening Hike Club
Volunteer Restoration Workday
Wednesday Wilderness Walk 4 Native Landscaping: Creating Your Garden Plan 5 Fresh Air Friday
Peabody's Pages Book Club
Three-Part Program Begins 6 Fishing: Spring Trout Season Opener
Volunteer Restoration Workday 7 Volunteer Restoration Workday 8 Forest Hike
Solar Eclipse Viewing Party 9 Native Landscaping: Creating Your Garden Plan 10 Evening Hike Club
Wednesday Wilderness Walk 11 Archery: Families
Peabody's Pages Junior | <ul style="list-style-type: none"> 12 Bird Walk 13 Nature Study Explorers
Phenology Journal Hike
Volunteer Restoration Workday 14 Volunteer Restoration Workday 15 Forest Hike
Volunteer Workday at the Nursery 16 Native Landscaping: Creating Your Garden Plan 17 Evening Hike Club
Volunteer Restoration Workday
Wednesday Wilderness Walk 18 The Challenge: Trivia Quiz Game
Music of the Roaring 20s 19 Bird Walk 20 Spring Brook: Back From the Dead
Volunteer Restoration Workday
Volunteer Workday at the Nursery 21 Archery: Adults
Volunteer Restoration Workday 22 Forest Hike
Volunteer Restoration Workday | <ul style="list-style-type: none"> 23 Native Landscaping: Creating Your Garden Plan
Volunteer Restoration Workday 24 Evening Hike Club
Volunteer Restoration Workday
Waycar Wednesday
Wednesday Wilderness Walk 25 Volunteer Restoration Workday 26 Bird Walk
Natural History Illustration Class
Six-Part Program Begins
Volunteer Workday at the Nursery 27 Phenology Journal Hike
Volunteer Restoration Workday 28 Sheep Shearing
Volunteer Restoration Workday 29 Forest Hike 30 Native Landscaping: Creating Your Garden Plan |
|--|---|---|

Here's a quick way to find your program online.

1. Visit dupageforest.org, and scroll down to "Find a Program."
2. Click the link to search by activity number.
3. In the search box, enter the five-digit number next to the program name in this calendar.
4. If a program has more than one date, time, or location, click "More" to find the one you want.



May

- 1** Evening Hike Club
Volunteer Restoration Workday
Volunteer Workday at the Nursery
Wednesday Wilderness Walk
- 2** Cocktails and Conservation: Plant Your Own Container Garden
- 3** Bird Walk
Fresh Air Friday
- 5** Warbler Walk
- 6** Forest Hike
Volunteer Workday at the Nursery
- 7** Volunteer Restoration Workday
- 8** Evening Hike Club
Wednesday Wilderness Walk
- 10** Bird Walk
- 11** Phenology Journal Hike
Volunteer Restoration Workday
Volunteer Workday at the Nursery
- 12** Fishing: With Mom
Volunteer Restoration Workday
Warbler Walk
- 13** Forest Hike
- 15** Volunteer Restoration Workday
Wednesday Wilderness Walk
- 16** The Challenge: Trivia Quiz Game
- 17** Bird Walk
Native Plant Sale
Volunteer Workday at the Nursery
- 18** Native Plant Sale
Volunteer Restoration Workday
- 19** Nature Journaling
Volunteer Restoration Workday
- 20** Forest Hike
- 22** Cicada Adventures
Kayaking: Basics
Volunteer Workday at the Nursery
Wednesday Wilderness Walk
- 24** Bird Walk
- 25** Phenology Journal Hike
- 26** Warbler Walk
- 29** Volunteer Workday at the Nursery
Waycar Wednesday
Wednesday Wilderness Walk
- 31** Bird Walk

June

- 1** Cicada Adventures
Volunteer Restoration Workday
- 2** Volunteer Restoration Workday
- 3** Volunteer Workday at the Nursery
- 5** Volunteer Restoration Workday
- 6** Cicada Adventures
- 7** Fresh Air Friday
Tractor-Drawn Wagon Ride
- 8** Mayslake Hall Franciscan Tour
Nature Study Explorers
Phenology Journal Hike
Summertime Second Saturdays
Volunteer Restoration Workday
Volunteer Workday at the Nursery
- 9** Fishing: Just for Kids Fishing Derby
- 13** The Challenge: Trivia Quiz Game
- 14** Tractor-Drawn Wagon Ride
Volunteer Workday at the Nursery
- 15** The Art of St. James Farm
Family Container Gardening
Mayslake Hall Franciscan Tour
Volunteer Restoration Workday
- 16** Fishing: With Dad
Volunteer Restoration Workday
- 19** Kayaking: Just for Kids
- 21** Tractor-Drawn Wagon Ride
Volunteer Workday at the Nursery
- 22** Mayslake Hall Franciscan Tour
Phenology Journal Hike
Volunteer Restoration Workday
- 23** Marvelous Monarchs
Volunteer Restoration Workday
- 26** Volunteer Restoration Workday
Volunteer Workday at the Nursery
- 28** Tractor-Drawn Wagon Ride
- 29** Mayslake Hall Franciscan Tour
Volunteer Restoration Workday



Plants & Wildlife

Bird Walk 24578

Enjoy birding camaraderie, and learn ID tips and tricks while looking for migrating birds on a casual 2-mile guided walk. Ages 18 and up. \$5 per person. Register online or at 630-933-7248.

April 12	7:30 – 9:30 a.m.	Danada
April 19	7:30 – 9:30 a.m.	St. James Farm
April 26	7:30 – 9:30 a.m.	McDowell Grove
May 3	7:30 – 9:30 a.m.	Meacham Grove
May 10	7:30 – 9:30 a.m.	W. DuPage Woods
May 17	7:30 – 9:30 a.m.	Fullersburg Woods
May 24	7:30 – 9:30 a.m.	Waterfall Glen
May 31	7:30 – 9:30 a.m.	Dunham

Cicada Adventures

Celebrate one of the most remarkable natural phenomena in the forest preserves and DuPage – the emergence of the 17-year cicadas – with fun activities and guided hikes that will give you a deeper appreciation for these quirky insects. All ages. Free. No registration. Questions? Call 630-933-7248.

May 22	3 – 6 p.m.	Fullersburg Woods
June 1	9 a.m. – Noon	St. James Farm
June 6	1 – 4 p.m.	Fullersburg Woods

Marvelous Monarchs 24763

Learn about our beautiful native monarchs and how you can help butterflies and other pollinators. Then join a leisurely 20-minute stroll to find monarchs in their various stages of life. Ages 12 and up; under 18 with an adult. \$5 per person. Register online or at 630-933-7248.

June 23	10:30 – 11:45 a.m.	St. James Farm
---------	--------------------	----------------

Phenology Journal Hike 24801

Learn how scientists use phenology, the study of seasonal changes, to track how climate change impacts the environment by keeping your own nature journal of plants, animals, and other observations. Ages 18 and up. \$5 per person. Register online, at 630-942-6200, or at the walk.

April 13 & 27	9 – 10:30 a.m.	W. DuPage Woods
May 11 & 25	9 – 10:30 a.m.	W. DuPage Woods
June 8 & 22	9 – 10:30 a.m.	W. DuPage Woods

Solar Eclipse Viewing Party

Join us for a party with solar viewing glasses, activities, crafts, and, in case of clouds, a live stream of the eclipse. The maximum eclipse will take place at 2:07 p.m. All ages. Free. No registration. Questions? Call 630-933-7248.

April 8	12:30 – 3:30 p.m.	Fullersburg Woods
---------	-------------------	-------------------

Spring Brook: Back From the Dead 24765

Learn how Spring Brook was restored to ecological health and continues to better the environment on this 2-mile creekside nature walk. Ages 18 and up. \$5 per person. Register online or at 630-933-7248.

April 20	10:30 – 11:45 a.m.	St. James Farm
----------	--------------------	----------------

Warbler Walk 24786

Search for the bright colorful feathers of neotropical migrants on this guided spring bird walk. Ages 18 and up. \$5 per person. Register online or at 630-942-6200.

May 5	7:30 – 9:30 a.m.	St. James Farm
May 12	7:30 – 9:30 a.m.	Blackwell
May 26	7:30 – 9:30 a.m.	Meacham Grove

Wednesday Wilderness Walk 24790

Take a guided nature hike, observing the seasons, flora, and fauna in the lesser-known but greatly diverse Lincoln Marsh. Join us for a cup of coffee or tea as we discuss some of nature's wonders before we start the walk. Ages 18 and up. \$5 per person. Register online, at 630-942-6200, or at the walk.

April 3, 10, 17 & 24	8 – 10 a.m.	Lincoln Marsh
May 1, 8, 15, 22 & 29	8 – 10 a.m.	Lincoln Marsh

Ways to Play

Archery

Adults 24752

Whether you're new to the sport or looking for a refresher, join us to learn safety tips, proper shooting techniques, and basic skills. Equipment provided. Ages 18 and up. \$5 per person. Register online or at 630-933-7248.

April 21	10 – 11:30 a.m.	Maple Grove
----------	-----------------	-------------

Registering on dupageforest.org?

Here's a quick way to find your program online.

1. Visit dupageforest.org, and scroll down to "Find a Program."
2. Click the link to search by activity number.
3. In the search box, enter the five-digit number next to the program name in this calendar.
4. If a program has more than one date, time, or location, click "More" to find the one you want.



Families 24751

Whether you're new to the sport or looking for a refresher, join us to learn safety tips, proper shooting techniques, and basic skills. Equipment provided. Ages 8 and up; under 18 with an adult. \$5 per person. Register online or at 630-933-7248.

April 11	5 – 6:30 p.m.	Blackwell
----------	---------------	-----------

The Challenge: Trivia Quiz Game

Challenge your friends and neighbors and show off your knowledge as you compete for prizes during this friendly quiz game featuring categories to test your familiarity with music, animals, geography, history, and more! Come with a team of up to seven, or have us help you find one. Ages 18 and up. Free. No registration. Questions? Call 630-206-9566.

April 18	7 – 8:30 p.m.	Oak Meadows
May 16	7 – 8:30 p.m.	Oak Meadows
June 13	7 – 8:30 p.m.	Oak Meadows

Fishing

Just for Kids Fishing Derby 24839

Bring the family to this friendly fishing competition just for kids 15 and younger with raffles and prizes for the biggest catches. Ages 15 and under with an adult. Free. Register online, at the event, or at 630-933-7248.

June 9	8 – 11 a.m.	Blackwell
--------	-------------	-----------

Spring Trout Season Opener

Try your luck on Silver, Pickerel, or Grove lakes. Anglers 16 and older must carry valid Illinois fishing licenses with inland trout stamps. All ages. Free. No registration. Questions? Call 630-933-7668.

April 6	6 a.m.	Blackwell, Pratt's Wayne Woods & Wood Dale Grove
---------	--------	--

With Dad 24755

Spend time by the lake with the dads in your life, creating memories and learning skills to increase your fishing successes. All ages. \$5 per person. Register online or at 630-933-7248.

June 16	11 a.m. – 12:30 p.m.	Pratt's Wayne
---------	----------------------	---------------

With Mom 24753

Spend the morning by the lake with the moms in your life, creating memories and learning skills to increase your fishing successes. All ages. \$5 per person. Register online or at 630-933-7248.

May 12	11 a.m. – 12:30 p.m.	Hidden Lake
--------	----------------------	-------------

Kayaking

Basics 24754

Learn paddling strokes and safety tips in a one-person kayak. Equipment provided. Ages 12 and up; under 18 with an adult. \$20 per person. Register online or at 630-933-7248.

May 22	5 – 7 p.m.	Herrick Lake
--------	------------	--------------

Just for Kids 24756

Learn the basics in a kid-friendly setting. Equipment provided. Ages 9 – 12. An adult must be present for the duration of the program and remain on shore. \$10 per child. Register online or at 630-933-7248.

June 19	6 – 7:30 p.m.	Herrick Lake
---------	---------------	--------------

Fore!

The Preserve at Oak Meadows

Maple Meadows • Green Meadows

A round at a DuPage forest preserve course is a great way to enjoy the outdoors! We have outings and leagues for all abilities. For tee times and specials visit DuPageGolf.com.

Riding Your Horse in the Indoor Arena

St. James Farm

Exercise and school your horse at this historic venue. Ages 12 and up; under 18 with an adult. \$10 per horse-rider combo per hour. Register at 630-918-1524.

Riding Lessons 24587

Danada Equestrian Center

Learn valuable horsemanship and riding skills in a friendly group setting, or receive one-on-one instruction and progress at your own pace with individual lessons or individual four-pack lessons. Ages 12 and up. \$40 – \$250 per DuPage County resident; \$50 – \$300 per nonresident. Register online or call 630-668-6012.



Health & Well-Being

Evening Hike Club 24734

Boost your outdoor wellness in a friendly group setting on a quick-paced 1.5-to-3.5-mile guided hike. Ages 18 and up. \$5 per person. Register online or at 630-933-7248.

April 3	6 – 7:30 p.m.	Oldfield Oaks
April 10	6 – 7:30 p.m.	Greene Valley
April 17	6 – 7:30 p.m.	Oak Meadows
April 24	6 – 7:30 p.m.	McDowell Grove
May 1	6 – 7:30 p.m.	West Branch
May 8	6 – 7:30 p.m.	Mallard Lake

Forest Hike 24741

Enjoy the wonders of the forest preserves and get some healthy exercise on a guided, quick-paced 3-to-5-mile hike. Ages 18 and up. \$5 per person. Register online or at 630-933-7248.

April 1	8:30 – 10 a.m.	Hidden Lake
April 8	8:30 – 10 a.m.	Churchill Woods
April 15	8:30 – 10 a.m.	Springbrook
April 22	8:30 – 10 a.m.	Philip State Park
April 29	8:30 – 10 a.m.	Fullersburg Woods
May 6	8:30 – 10 a.m.	Meacham Grove
May 13	8:30 – 10 a.m.	Pratt's Wayne
May 20	8:30 – 10 a.m.	Waterfall Glen

Fresh Air Friday 24759

Enjoy a relaxing hour of mindful walking and immersive nature-based ways to tune in to the present on a 1-mile stroll on crushed limestone and grass trails. Ages 18 and up. \$5 per person. Register online or at 630-933-7248.

April 5	10 – 11 a.m.	St. James Farm
May 3	10 – 11 a.m.	St. James Farm
June 7	10 – 11 a.m.	St. James Farm

Living Green

Cocktails and Conservation: Plant Your Own Container Garden 24577

Container gardening with native plants is much easier to put together than a full-sized garden. Learn about native wildflowers, how to identify them, and how to easily grow them at home in a container garden. Sip a signature cocktail made with native plant ingredients as you pot up your own container of native flowers, grasses, and sedges for home. Ages 21 and up. \$40 per person. Register online or at 630-933-7248

May 2	6:30 – 8:30 p.m.	Oak Meadows
-------	------------------	-------------

Family Container Gardening 24706

Celebrate Pollinator Week with the whole family by bringing a little bit of nature to your backyard. You'll learn about several common native wildflowers, how to identify them, and why they are important to wildlife. Then get your hands dirty mixing dirt and potting up your own container of native plants to take home. All ages; under 18 with an adult. \$25 per family. Register online or at 630-933-7248.

June 15	10 – 11:30 a.m.	St. James Farm
---------	-----------------	----------------



NATIVE PLANT SALE

Mayslake Peabody Estate

Shop in person for native flowers, grasses, shrubs, and trees! For a list of plants, visit dupageforest.org/native-plant-sale starting March 1. Questions? Call 630-933-7248.

May 17

10 a.m. – 7 p.m.

May 18

9 a.m. – 2 p.m.

Get ready for this year's sale by signing up for one of our Native Landscaping programs on the next page.

- Here's a quick way to find your program online.
1. Visit dupageforest.org, and scroll down to "Find a Program."
 2. Click the link to search by activity number.
 3. In the search box, enter the five-digit number next to the program name in this calendar.
 4. If a program has more than one date, time, or location, click "More" to find the one you want.



Native Landscaping

Bring drawings or photos of your garden space, and then get customized recommendations at a meeting with a plant expert who will help you select native plants to match your garden goals and growing conditions. Ages 18 and up. Register online or at 630-933-7248.

Creating Your Garden Plan 24819

60 minutes. \$30 per session.

April 2, 9, 16, 23 & 30	3 & 6 p.m.	Online
----------------------------	------------	--------

Creating Your Garden Plan 24707

45 minutes. \$20 per session.

April 4	5, 6 & 7 p.m.	Fullersburg Woods
---------	---------------	-------------------

Heritage

The Art of St. James Farm 24766

Take a guided walking tour of the preserve's seven outdoor pieces of artwork. Learn about the inspiration for each piece, the artists and their creative processes, and how the artwork came to be at St. James Farm. Ages 18 and up. \$5 per person. Register online or at 630-933-7248.

June 15	2 – 3 p.m.	St. James Farm
---------	------------	----------------

Nature Study Explorers

Create memories with your friends and family as you explore nature through an 1890s lens! Take a step back in time, and learn from the Nature Study movement of the late Victorian era. Each program will have a different activity ranging from craft projects to science experiments depending on the time of the year. Suggested admission donation of \$5 per person ages 3 and up to enter the farm. All ages. Free. No registration. Questions? Call 630-876-5900.

April 13	1:30 – 3:30 p.m.	Kline Creek Farm
June 8	1:30 – 3:30 p.m.	Kline Creek Farm

1890s Living

Kline Creek Farm

Suggested admission donation of \$5 per person ages 3 and up to enter the farm. Registration not required for these all-ages programs. Questions? Call 630-876-5900, or visit facebook.com/klinecreekfarm.

CHORES ON A DAIRY FARM

This program provides an opportunity for kids and adults to try their hands at different activities and allows them to learn about the importance of farms like this.

June 3 – 27

Mondays & Thursdays 1:30 – 3:30 p.m.

HOUSE TOUR: DAIRY MONTH

Join us for a guided tour of the 1890s farmhouse with discussions on dairy farming, heritage breed cows, butter making, and more.

May 30 – June 30

Thursday – Monday 10 a.m. – 4 p.m. on the hour

HOUSE TOUR: SPRINGTIME ON THE FARM

Take a guided tour of the 1890s farmhouse focusing on the busy spring season, when the farm comes to life! Newborn lambs and calves bring new life to the farm as the draft horses prepare the fields for planting. Learn about the work that went into the kitchen garden and the crop fields, and see us freshen up the house after a long winter.

April 1 – May 26

Thursday – Monday 10 a.m. – 4 p.m. on the hour

MILKING DEMONSTRATIONS

See the farm's heritage Shorthorn cows hand-milked the 1890s way.

June 1 – 30

Saturdays & Sundays 9:30 – 10 a.m.

STORY TIME

Bring the family and rest under the shade of a tree while a costumed interpreter shares lessons from the world of stories with different historic tales each week.

June 3 – Aug. 26

Mondays 10 a.m. – Noon



Sheep Shearing

Watch farmers hand shear our heritage Cotswold sheep, and learn about the role of sheep on an 1890s farm. Suggested admission donation of \$5 per person ages 3 and up to enter the farm. All ages. Free. No registration. Questions? Call 630-876-5900.

April 28 1:30 – 3:30 p.m. Kline Creek Farm

Tractor-Drawn Wagon Ride

Enjoy a 30-minute ride while learning about the forest preserve's heritage and natural areas. Rides begin at 1, 1:45, and 2:30 p.m. All ages; under 13 with an adult. \$5 per person ages 5 and up; under 5 free. No registration. Questions? Call 630-580-7025.

June 7, 14, 21 & 28 1 – 3 p.m. St. James Farm

Art and More at Mayslake

Mayslake Peabody Estate

Registration is not required for these programs. Questions? Call 630-206-9566.

AT HOME WITH NATURE HOUSE TOUR

Learn some of the surprising history of Mayslake Hall, a landmark and architectural gem and the former home of F.S. Peabody in 1921, which has been surrounded by an oasis of nature for over 100 years. Ages 12 and up; under 18 with an adult. \$8 per person.

**April 1 – June 29 Monday – Friday 12:30 – 1:30 p.m.
Saturdays 11:30 a.m. – 12:30 p.m.**

CELEBRATING THE BEAUTY OF NATURE AND TAPESTRY OF NATURE

These two concurrent exhibits present a collection by the Oak Brook Art League, reflecting the artists' experiences and responses to the world, and by the three visionary artists of In Focus, who invite you to pause, reflect, and revel in the ephemeral magic that binds us to our surroundings. Join us April 17 at 6 p.m. for a two-hour reception, where you'll meet some of the artists and enjoy signature mocktails. All ages; under 13 with an adult. Free.

**April 2 – May 18 Monday – Friday Noon – 3 p.m.
Saturdays 9 a.m. – 1 p.m.**

FAR AFIELD

Take in this exhibit by the Near West Arts Collective created during adventures off the beaten path in nature and the world around us. Join us June 19 at 6 p.m. for a two-hour reception, where you'll meet some of the members and enjoy signature mocktails. All ages; under 13 with an adult. Free.

**May 21 – June 29 Monday – Friday Noon – 3 p.m.
Saturdays 9 a.m. – 1 p.m.**

Waycar Wednesday

Walk through our 1906 waycar (also called a caboose), and hear how it was first used on the rails and then by Brooks McCormick after its retirement. All ages; under 18 with an adult. Free. No registration. Questions? Call 630-580-7025.

April 24 11 a.m. – 3 p.m. St. James Farm
May 29 11 a.m. – 3 p.m. St. James Farm

Nature Art & Culture

Mayslake Hall Franciscan Tour 24849

Discover the history of the Franciscans who operated retreats on the property from the late 1920s to the 1990s. The tour is indoors but will end at the Portiuncula Chapel if the weather permits. Ages 18 and up. \$8 per person. Register online or at 630-206-9566.

June 8, 15, 22 & 29 10 – 11 a.m. Mayslake

Music of the Roaring 20s 24835

Take a step back in time to the era of the Charleston and Rag Time. Learn about the historical and social influences behind the music, and hear the sounds that defined the Roaring 20s. Ages 18 and up. \$5 per person. Register online or at 630-206-9566.

April 18 7 – 8:30 p.m. Mayslake

Natural History Illustration Class

Six-Part Program 24809

Work outside (weather-permitting) with a skilled instructor using specimens and photographs to draw and paint plants, flowers, and landscapes using watercolor and gouache. No class on May 10 and 17. All ages; under 18 with an adult. \$240 per person. Register online or at 630-206-9566.

April 26 – June 14 4 – 6 p.m. Mayslake
Fridays



Registering on dupageforest.org?

- Here's a quick way to find your program online.
1. Visit dupageforest.org, and scroll down to "Find a Program."
 2. Click the link to search by activity number.
 3. In the search box, enter the five-digit number next to the program name in this calendar.
 4. If a program has more than one date, time, or location, click "More" to find the one you want.

Nature Journaling 24764

Use your senses to observe the natural world while creating a memory record you can return to for reflection or scientific value. Ages 7 and up; under 18 with an adult. \$5 per person. Register online or at 630-933-7248.

May 19	2 – 3:15 p.m.	St. James Farm
--------	---------------	----------------

Peabody's Pages Book Club

Three-Part Program 24823

Discuss great reads with fellow book fans at these enriching meetings. In April we'll discuss *The Frugal Gourmet Cooks American* by Jeff Smith; in May, *The Hound of the Baskervilles* by Arthur Conan Doyle; and in June, *Smoke Gets in Your Eyes* by Catlin Doughty. Titles subject to change. Ages 18 and up. \$10 per person for all three. Register online or at 630-206-9566.

April 5, May 3 & June 7	10 – 11:15 a.m.	Mayslake
----------------------------	-----------------	----------

Peabody's Pages Junior 24834

Bring your kids to listen to classic stories told around a campfire. Ages 5 – 12 with an adult. \$5 per child. Register online or at 630-206-9566.

April 11	10 – 11 a.m.	Mayslake
----------	--------------	----------

Summertime Second Saturdays

Bring the family for a fun new program where we'll explore state symbols and make crafts for home related to the state bird, tree, and flower. Ages 8 and up; under 18 with an adult. Free. No registration. Questions? Call 630-206-9566.

June 8	12:30 – 2:30 p.m.	Mayslake
--------	-------------------	----------

Volunteer

Volunteer Workday at the Nursery 24886

Lend a hand weeding, watering, or collecting and cleaning seeds from native grasses and flowers. Ages 12 and up; under 18 with an adult. Free. Register online or at 630-206-9630 at least five days in advance (10 days ahead for groups of five or more).

April 15, 20 & 26	9 a.m. – Noon	Blackwell
May 1, 6, 11, 17, 22 & 29	9 a.m. – Noon	Blackwell
June 3, 8, 14, 21 & 26	9 a.m. – Noon	Blackwell

Volunteer Restoration Workday 25001

Help improve a forest preserve prairie or woodland by collecting seeds or removing nonnative plants. Ages 8 and up; under 18 with an adult. Free. Register online or at 630-206-9630 at least five days in advance (10 days by phone for groups of five or more).

Big Woods

April 13	9 – 11:30 a.m.	Big Woods
April 23	3 – 4:30 p.m.	Big Woods
May 7	3 – 4:30 p.m.	Big Woods

Churchill Woods

April 6, 7, 13, 14, 20, 21, 27 & 28	8:30 – 11 a.m.	Churchill Woods
May 11, 12, 18 & 19	8:30 – 11 a.m.	Churchill Woods
June 1, 2, 15, 16, 22 & 23	8:30 – 11 a.m.	Churchill Woods

Churchill Woods Glacial Ridge

April 13, 22 & 27	9 a.m. – Noon	Churchill/Glacial
May 18	9 a.m. – Noon	Churchill/Glacial
June 1, 15 & 29	9 a.m. – Noon	Churchill/Glacial

Maple Grove

April 13 & 27	9 a.m. – Noon	Maple Grove
May 11 & 18	9 a.m. – Noon	Maple Grove
June 1 & 8	9 a.m. – Noon	Maple Grove

Oldfield Oaks

April 3, 17, 23, 24 & 25	8 – 10 a.m.	Oldfield Oaks
May 1 & 15	8 – 10 a.m.	Oldfield Oaks
June 5 & 26	8 – 10 a.m.	Oldfield Oaks

Springbrook Prairie

April 20 & 24	9 a.m. – Noon	Springbrook
---------------	---------------	-------------

St. James Farm

April 27	9 a.m. – Noon	St. James Farm
May 18	9 a.m. – Noon	St. James Farm

Wayne Grove

April 21	1 – 3 p.m.	Wayne Grove
----------	------------	-------------

Willowbrook

April 6 & 20	9 – 11 a.m.	Willowbrook
May 18	9 – 11 a.m.	Willowbrook
June 1 & 15	9 – 11 a.m.	Willowbrook

The Moon's Big Show

James Thew/stock.adobe.com

by **JENNY KAMM**, ENVIRONMENTAL INTERPRETER, COMMUNITY ENGAGEMENT

On Aug. 21, 2017, I was hiking along the Appalachian Trail somewhere in the Green Mountain National Forest just south of Rutland, Vermont. I didn't know it when I set out, but I was about to witness one of our planet's most fascinating occurrences, a solar eclipse. It wasn't a total eclipse, meaning I didn't experience the eerie dimming of light and drop in temperature, but I did enjoy the smattering of thousands of crescent sun shadows dappling the woody trail through the

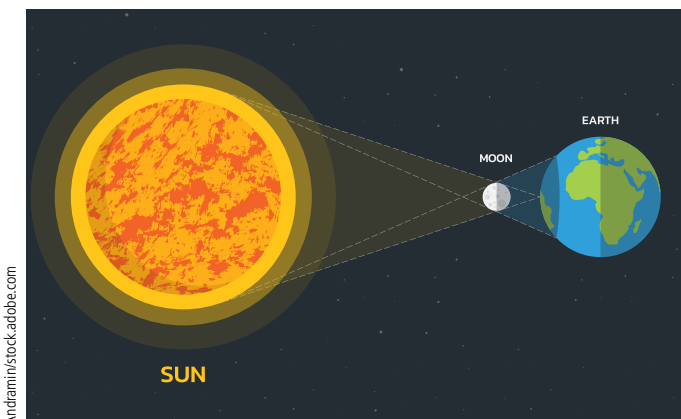
trees. (I didn't have any protective solar eclipse glasses, so I was thrilled to see it through the shadows.) This year on April 8, we'll have the chance to experience an eclipse closer to home right here in DuPage forest preserves.

For centuries, humans attributed eclipses to angry dragons, upset gods, hungry pumas, and other agents. Only 2,500 years ago did the first few individuals start to consider that the moon was involved. Today, we know we have eclipses because of the moon, but the reason is still fascinating.

The sun is 400 times bigger than the moon, but because the Earth is so close to the moon (239,000 miles) and so far from the sun (93 million miles) and the diameters of the moon and sun are what they are (2,159 and 865,000 miles, respectively), when things line up just right, the moon is able to block the entire fiery sphere from our view. It's a remarkable event considering no other moon in our solar system (there are 290) can totally eclipse the sun in this way.

Even though the moon circles the Earth once a month, globally, eclipses occur just two to three times a year and only along a narrow band. Why? Well the moon's ellipse (its orbit around the Earth) isn't perfectly round and doesn't sit directly along our equator. It's also tilted at a 5-degree angle, so the moon is rarely in the right spot to cause an eclipse.

In our area, on April 8, beginning at 12:51 p.m. the moon



Andramin/stock.adobe.com

▲ Solar eclipses occur when the moon is in just the right spot between the Earth and sun so that it blocks the sun's light.



▲ The author experienced the 2017 eclipse by safely viewing the crescent-shaped sunbeams that fell through the trees.



© Kyle Tansley

▲ During an eclipse, people have observed birds returning to their nests as if it were dusk.

will begin to eclipse the sun. It's being called a "total" eclipse because along the center of its path the moon will block the sun completely. Here in DuPage, though, at its peak at 2:07 p.m., it will cover only 95%, leaving a small crescent of light. (If you want to see 100% and have friends in Carbondale, Illinois, you might want to pay them a visit.) According to NASA, our area won't see a 100% eclipse until Sept. 14, 2099. In any case, this year's show will be over at 3:22 p.m.

Even though we now understand what causes an eclipse, we're still learning how plants and animals react to one. We learn more with each one, and although many observations have been anecdotal, they're fascinating none the less. For example, during the window of an eclipse, people have seen birds go to roost, many falling completely silent. When the light returns, observers have noted bird songs like that at dawn. It makes sense when you consider that birds, like much of life, rely on light to dictate their circadian rhythms and behaviors.

Other animals seem to return to their nocturnal behaviors during an eclipse as well. Bees have been spotted returning to their hives, and people have reported an increase in mosquitoes, the emergence of bats, and the sounds of frog and cricket songs, all that usually occur around dusk.

Light also affects how plants behave. Studies show that transpiration in trees – the way water moves from the roots to the small pores in the leaves – slows during eclipses. Photosynthesis also slows down as does the flow of tree sap.

Not surprisingly, plants slowly return to regular activity once the sun returns.

With every eclipse we learn more about how life responds to this phenomenon, and there are ways you can help collect data to contribute to the effort. During the 2017 eclipse, 636 people across North America participated in a citizen science activity where they took pictures of plants and animals 30 minutes before, during, and 30 minutes after the eclipse. The experiment was called "Life Responds" and was conducted through iNaturalist, a citizen science app.

The project was a success. People submitted 2,750 pictures with 478 identified species. During the peak of the eclipse they observed chickens going to roost, noticed cicadas stop singing, and heard crickets start to chirp, with the pattern shifting into reverse as the moon moved on.

This year, the Forest Preserve District is collecting its own data through iNaturalist. Once you have the app downloaded to your phone, click the "Projects" button, and then enter "FPDDC Wildlife Observations: Solar Eclipse 2024" in the search box. Details on how to participate are under "About."

Who knows what fascinating things we'll observe! As the shadow of the moon sweeps across the Earth, look around you at the surrounding life here on Earth. How is it all responding to this strange occurrence? I like to think that this experience will remind me of how small I am and yet, at the same time, how connected I am to everything around me. •

If you're interested in watching this year's eclipse (or any), **never look at the sun without proper eye protection** (and this doesn't mean sunglasses). Even the slightest sliver of sunlight can permanently damage your eyes. NASA offers ways to safely view the eclipse at science.nasa.gov/eclipses. The page also takes you to a link with places where you can buy solar eclipse glasses that conform to the ISO 12312-2 international standard. **There are fake glasses out there that will not protect your eyes, so it's critical that you trust your source.** The Forest Preserve District will have a limited supply of glasses on hand April 8 at Fullersburg Woods Nature Education Center, so stop by and enjoy some eclipse-themed activities! Details are on Page 10.



directory



HEADQUARTERS

35580 Naperville Road
Wheaton • 630-933-7200
TTY 800-526-0857
dupageforest.org
forest@dupageforest.org

Visitor Services

630-933-7248
Monday – Friday 8 a.m. – 4 p.m.

Saturdays June – August
(phone, email, and online chat only)
9 a.m. – 2 p.m.

Office

Monday – Friday 8 a.m. – 4:30 p.m.

Volunteer Services

630-933-7233

Conservationist Subscriptions

630-933-7085

Partnership & Philanthropy Friends of the Forest Preserve District

630-871-6400

Law Enforcement

630-933-7240

FOREST PRESERVE *Hours*

Most forest preserves are open daily from one hour after sunrise until one hour after sunset.

PARTNER *Sites*

DANADA HOUSE

Wheaton • 630-668-5392

FISCHER FARM

Bensenville • 630-766-7015

BARTLETT NATURE CENTER

Bartlett • 847-608-3120

LYMAN WOODS NATURE CENTER

Downers Grove • 630-963-9388

EDUCATION *Centers*

DANADA EQUESTRIAN CENTER

35507 Naperville Road
Wheaton • 630-668-6012

Office

Monday – Friday 8 a.m. – 4:30 p.m.
Closed Saturdays & Sundays

Barn

Monday – Friday 8 a.m. – 8 p.m.
Saturdays & Sundays 8 a.m. – 6 p.m.

FULLERSBURG WOODS NATURE EDUCATION CENTER

3609 Spring Road
Oak Brook • 630-850-8110

Monday – Saturday 10 a.m. – 5 p.m.
Closed Sundays

GRAUE MILL AND MUSEUM

3800 York Road • Oak Brook
630-850-8112

Open mid-April – mid-November
Wednesday – Sunday 10 a.m. – 4 p.m.
Closed Mondays & Tuesdays

KLINE CREEK FARM

1N600 County Farm Road
West Chicago • 630-876-5900

Suggested admission donation \$5 per
person ages 3 and up

Thursday – Monday 9 a.m. – 5 p.m.
Closed Tuesdays & Wednesdays

ST. JAMES FARM

2S541 Winfield Road • Warrenville
630-580-7025

Office and Visitor Center

Please call for hours.

MAYSLAKE PEABODY ESTATE

1717 W. 31st St.
Oak Brook • 630-206-9566

Monday – Friday Noon – 3 p.m.
Saturdays 9 a.m. – 1 p.m.
Closed Sundays

WILLOWBROOK WILDLIFE CENTER

525 S. Park Blvd.
Glen Ellyn • 630-942-6200

Animal Admittance

Thursday – Tuesday 9 a.m. – 4 p.m.
Wednesdays 9 a.m. – Noon

Phone Hours

Daily 9 a.m. – 4 p.m.

Visitor Center and Outdoor Exhibit Trail

Although Willowbrook continues to accept animals, the visitor center will be closed until a new building opens in 2024. The outdoor exhibit trail is permanently closed. For updates, visit dupageforest.org.

GOLF *Courses*

THE PRESERVE AT OAK MEADOWS

900 N. Wood Dale Road
Addison • 630-595-0071

MAPLE MEADOWS GOLF COURSE

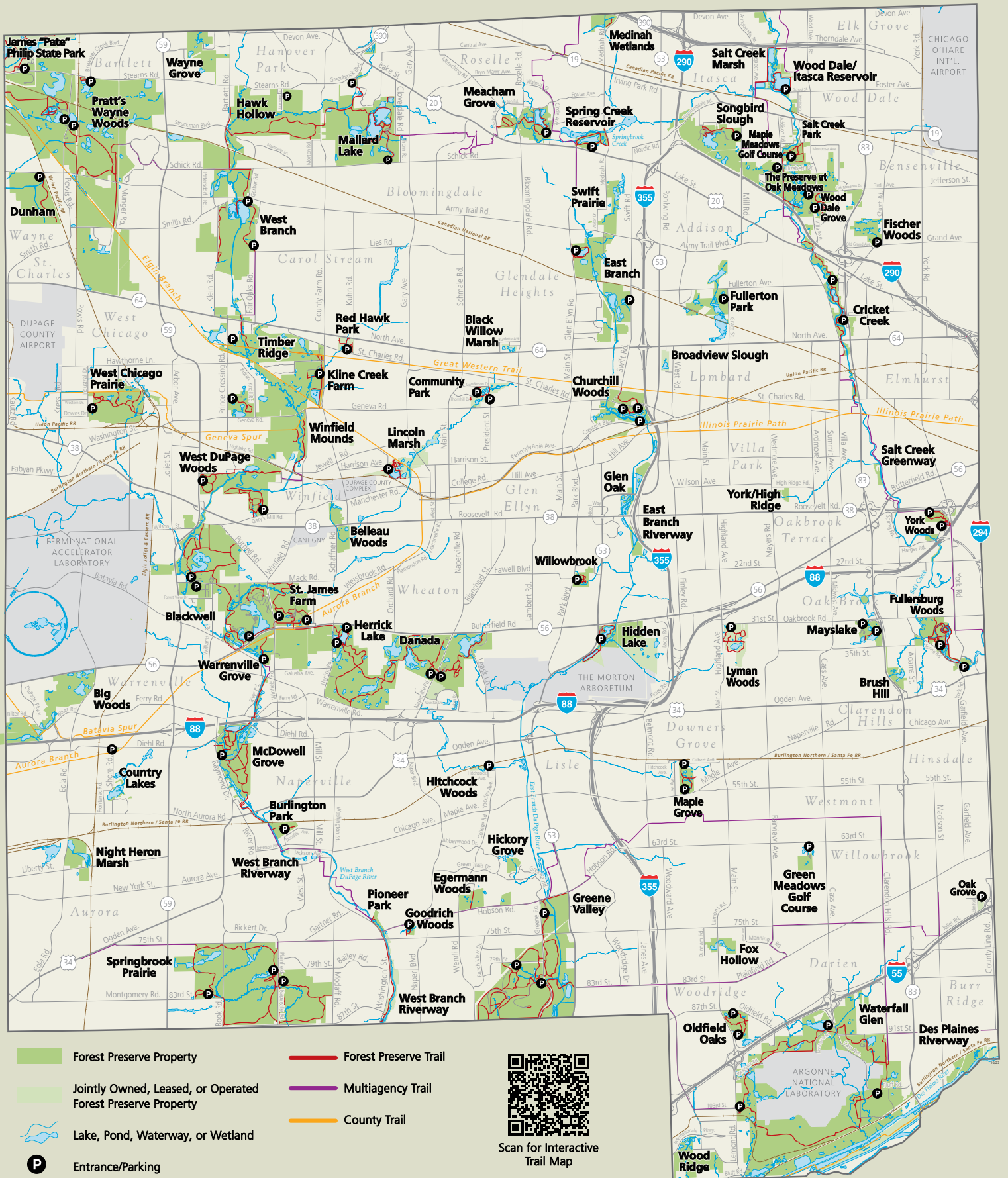
272 S. Addison Road
Wood Dale • 630-616-8424

GREEN MEADOWS GOLF COURSE

18W201 W. 63rd St.
Westmont • 630-810-5330

ACCESSIBILITY

If you have accessibility needs or concerns, please contact our ADA programs and activities coordinator at 630-871-7537 or TTY 800-526-0857 at least 48 hours before your visit or at least two weeks prior to attending a registration-based program.





**Forest Preserve District
of DuPage County**

35580 Naperville Road
Wheaton, IL 60189

please deliver to current resident

PRSR STD
U.S. Postage
PAID
Carol Stream, IL
Permit No. 96

the Conservationist

A Quarterly Publication of the Forest Preserve District of DuPage County **Spring 2024**

Native Plant Sale

Mayslake Peabody Estate • Oak Brook

Shop in person for native flowers,
grasses, shrubs, and trees!

For a list of plants, visit
**[dupageforest.org/
native-plant-sale](https://dupageforest.org/native-plant-sale)** starting
March 1. Questions?
Call 630-933-7248.

**May 17
10 a.m. – 7 p.m.**

**May 18
9 a.m. – 2 p.m.**

