

the Conservationist

A Quarterly Publication of the Forest Preserve District of DuPage County

Fall 2018



Nuts About Oaks

Yellowjackets
(But Don't Panic!)

Nature Color Hunt



Forest Preserve District of DuPage County

from the president



Some people associate fall with the year winding down, but this is far from the case in the forest preserves. For color junkies, the landscape is kicking into high gear, and for people looking for ways to spend time in these scenic surroundings, so is our fall lineup of programs. (Don't believe me? Check out the calendar starting on Page 8.)

From an operational point of view, fall now also means the start of the Forest Preserve District's budget-planning process. This past spring the Board of Commissioners voted to move the fiscal year start date from July 1 to Jan. 1. As with many of the efficiencies we've enacted during the year, the switch will help us streamline our bookkeeping efforts by putting us in sync with the tax-levy process.

This particular budget-planning season is taking place as we complete a significant endeavor: the creation of a new master plan, which will guide our efforts over the next five years. Based on what we know from our preliminary findings, which will help as we work on the budget, your neighbors have found several issues to be particularly important:

- Providing ongoing maintenance, public safety, habitat restoration and environmental management at all forest preserves
- Continuing to focus on efficiencies through shared services and partnerships benefiting the public
- Maintaining our strong financial position, including our elite status of continued AAA ratings from Standard and Poor's
- Building on the success of recently completed projects such as The Preserve at Oak Meadows and our fleet facility

I look forward to working with our commissioners and staff to ensure DuPage remains home to some of the region's best natural areas and experiences. Your DuPage forest preserves make up nearly 26,000 acres of open space, and fall is guaranteed to bring some amazing ways to make the most of them!

Joseph F. Cantore

President, Forest Preserve District of DuPage County



BOARD OF COMMISSIONERS

President

Joseph F. Cantore, Oak Brook

Commissioners

Marsha Murphy, Addison — District 1
Jeffrey Redick, Elmhurst — District 2
Linda Painter, Hinsdale — District 3
Tim Whelan, Wheaton — District 4
Mary Lou Wehrli, Naperville — District 5
Al Murphy, West Chicago — District 6

Executive Director

Ed Stevenson



BOARD MEETINGS

For schedules and agendas or to watch live or recorded meetings, visit dupageforest.org.



THE CONSERVATIONIST

Fall 2018, Vol. 54, No. 4

Communications & Marketing Director

Tony Martinez Jr.



FOREST PRESERVE DISTRICT OF DUPAGE COUNTY

35580 Naperville Road, Wheaton, IL 60189
630-933-7200, TTY 800-526-0857

dupageforest.org

The Conservationist is a quarterly publication of the Forest Preserve District of DuPage County. Subscriptions are free for DuPage County residents and \$5 per year for nonresidents. To subscribe or unsubscribe, call 630-933-7085 or email forest@dupageforest.org. You can also read this and previous issues 24/7 at dupageforest.org. To receive an email when each new issue is available online, email forest@dupageforest.org.



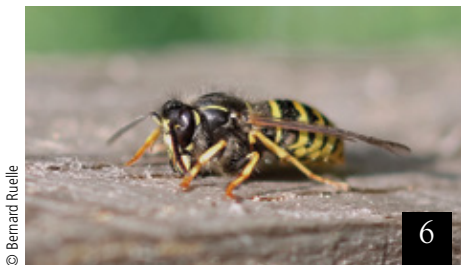
contents

Vol. 54, No. 4 | **Fall 2018**



istock.com/mandj98

4

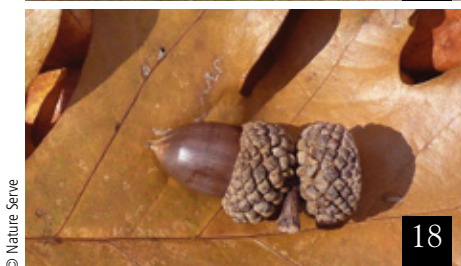


© Bernard Ruelle

6



8



© Nature Serve

18



© Kim Unertl

20

4 **News & Notes**

6 **Yellowjackets (But Don't Panic!)**

8 **Fall Calendar**

18 **Nuts About Oaks**

20 **Nature Color Hunt**

22 **Directory**

23 **Map**

On the cover: Blue jay with acorn © Marie Read Wildlife Photography

OUR *Mission*

To acquire and hold lands for the purpose of preserving the flora, fauna and scenic beauty for the education, pleasure and recreation of DuPage County citizens

news & notes

WORK ON THE WEST BRANCH AT MALLARD LAKE

In July the Forest Preserve District began to restore a half mile of the West Branch DuPage River through Mallard Lake.

The river runs along the east, west and south sides of the now-closed 30-acre landfill on the north side of the preserve, but at one time it flowed through the middle of the site. Authorities rerouted it in the 1960s to create room for landfill operations, creating a straighter, deeply channelized waterway in the process.

Over time and unimpeded by the shallower twists and turns of a natural river, fast-moving stormwaters eroded the banks, putting nearby landfill-related infrastructure at risk. By returning bends, pools and riffles, the Forest Preserve District will not only safeguard monitors and other equipment but also improve water quality and underwater habitat, a plus for wildlife that relies on the river for food and shelter.

The fully funded project will cost \$2,474,500 and should be substantially completed by the end of 2019 without the need to close trails or other areas. Over the following five to six years, the District will then focus on establishing native vegetation along the riverbank.



MANY Thanks

The Forest Preserve District thanks the donors who contributed to its efforts between May 14 and Aug. 12. To learn how contributions of financial support can benefit the District, visit dupageforest.org/donate.

To give to the Friends of the Forest Preserve District of DuPage County, the 501(c)(3) nonprofit fundraising arm of the District, visit dupageforestgiving.org/donate/designated-gifts.

Gifts of Note

The Estate of Ellen Watt
\$10,000 — Willowbrook Wildlife Center
Gary Montgomery and Judy Susarrey-Montgomery
\$1,500 — Mayslake Peabody Estate and Mayslake Hall staircase restorations

Gifts of Note to the Friends of the Forest Preserve District

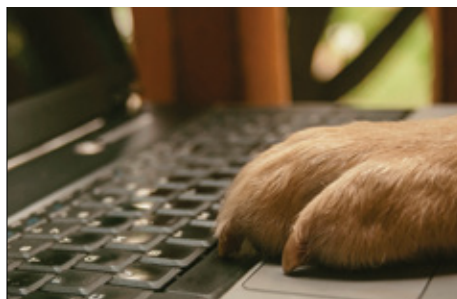
REI
\$6,000 — Night Heron Trail restoration at Fullersburg Woods
ComEd
\$5,000 — Willowbrook Wildlife Center
Fritz Karwoski
\$1,500 — Belleau Woods restoration project
Exelon
\$1,000 — Volunteer Services
Friends of Bryan Falconer
\$1,000 — Tribute bench at Herrick Lake in memory of Bryan Falconer

Mary Ann Mahoney
\$1,000 — Willowbrook Wildlife Center
Pro-Pak Industries Inc.
\$1,000 — Greatest Needs
Ranch Spur Charitable Trust
\$1,000 — Greatest Needs
Jennifer Martyn
\$900 — Willowbrook Wildlife Center and Natural Resources
PowerForward DuPage
\$900 — Willowbrook Wildlife Center and Natural Resources
Ray and Louise Vogt
\$800 — Greatest Needs
Cheryl Clark
\$500 — Willowbrook Wildlife Center in memory of Sharon Heberling
Irene McMaster
\$500 — Willowbrook Wildlife Center
Carol O'Neal
\$500 — Willowbrook Wildlife Center
Rotary Club of Elmhurst
\$500 — Adopt a Blanding's Turtle

BECAUSE DEER DON'T LOOK BOTH WAYS

A deer can run in front of your car at any time, but the risk goes up during the fall breeding season, when these animals have one thing on their minds: finding mates. Your odds are even higher on roads along woods, fields, fencerows and waterways, so stay alert.

- Be extremely careful at dawn and dusk, when deer are most active and visibility is poor.
- Watch for deer-crossing signs, which tell you when you're in an area that's had a number of accidents.
- Slow down when approaching deer. They may bolt or quickly change direction without warning.
- Deer often travel in groups, so if you see one there are likely more.
- Don't swerve into oncoming traffic to avoid deer. Slow to a stop and wait. Flash your headlights to encourage the animals to move.
- If you hit a deer, don't move it. Instead, call local law enforcement for help.



GET YOUR PAWS ON YOUR 2019 PERMITS

2019 annual permits for off-leash dog areas, private boating and model crafts go on sale Dec. 1 at dupageforest.org under "Registration & Permits." They'll also be available at Forest Preserve District headquarters, 3S580 Naperville Road in Wheaton, Monday – Friday 8 a.m. – 4 p.m. And new this fall, dog lovers can buy off-leash permits at Mayslake Peabody Estate, 1717 W. 31st St. in Oak Brook, Wednesdays 8 a.m. – 4 p.m. and Saturdays 9 a.m. – 1 p.m.

Questions? Call Visitor Services weekdays 8 a.m. – 4 p.m. at 630-933-7248.

LIVE *and on Demand*

Can't make it to an upcoming board meeting? Find schedules and agendas and watch proceedings live or on demand at dupageforest.org under "Our Board."

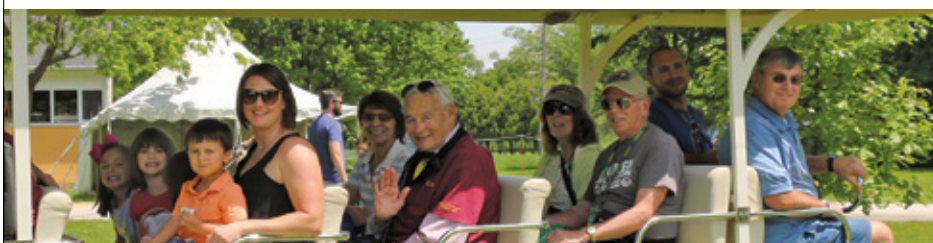
Commission meetings and planning sessions are open to the public and take place at Forest Preserve District headquarters at 3S580 Naperville Road in Wheaton. Normally, commission meetings are at 8 a.m. on the first and third Tuesdays of the month, and planning sessions are at 8 a.m. on the second and fourth Tuesdays. At both the board discusses Forest Preserve District business, hears public comments and staff reports, and votes on agenda items.


GIVE THE GIFT OF EXCLUSIVE FOREST PRESERVE FUN

Start planning now for your end-of-the-year gift giving (and next year's tax season) by donating to the Friends of the Forest Preserve District, the 501(c)(3) nonprofit whose fundraising efforts help the Forest Preserve District manage the county's prairies, woodlands and wetlands and offer educational and recreational activities.

With a tax-deductible contribution of \$100 or more, you or that special someone on your holiday shopping list will become a part of the Friends' Ambassadors Circle, which offers exclusive recognition, updates and invitations to forest preserve programs, experiences and receptions.

To make your donation, visit dupageforest.org and click "Donate" or call 630-933-7097.





▼ Adult yellowjackets get some of the sugar in their diets from flowers, such as fall-blooming goldenrod.

Yellowjackets (But Don't Panic!)

by **SUSAN URASKY**, FULLERSBURG WOODS NATURE EDUCATION CENTER

Summer's heat is behind us, making afternoons perfect for picnics. But before you head out for the forest preserves' vivid golds and fiery reds, remember the other bright sights you'll likely see: yellowjackets.

The insects we commonly call yellowjackets are actually different types of wasps. The two most common in Illinois, eastern and German yellowjackets, are both considered "social" wasps because they live in colonies, each with a single reproducing queen and hundreds — sometimes thousands — of offspring.

In spring and early summer the queen's brood is made up entirely of infertile females called "workers," whose sole job is to feed the ever-growing colony and take care of the nest. Not until late summer and early fall will the queen start producing males, called "drones," and fertile females to mate with yellowjackets from other nests. Any females that become fertilized — next year's queens — will be the only members of the colony to survive winter; the original queen and all of her remaining offspring will die.

New queens spend the winter in logs, piles of leaves and other sheltered areas, emerging in spring to look for places to build their nests. (Yellowjackets rarely reuse old ones.) Eastern

yellowjackets typically choose underground sites in covered, out-of-the-way areas that are normally easy to avoid, unless they're in landscaping, compost piles or frequently mowed areas. German yellowjackets, on the other hand, prefer natural cavities and spaces in man-made structures, making them more likely to be in walls, doorways or sheds.

Inside the nest the queen builds stacked rows of hexagonal paper cells using pulp she makes from her saliva and chewed-up bits of wood. In each cell she lays a single egg. When the first few hatch, she feeds the developing larvae protein-rich caterpillars, earwigs, spiders, worms and carrion (decaying animals). After the first 20 or so workers take flight, her only job will be to remain in the nest and lay eggs until she dies. Her ever-growing family of winged workers, now on a diet of sugars from fruits, flowers and unguarded soda cans, will be responsible for building new cells and feeding the larvae inside.

Most yellowjackets go unnoticed by humans in spring and summer and even provide unintended benefits. One nest can remove nearly 2 pounds of insects in a single summer and protect many gardens and flowerbeds from insatiable caterpillars.

German yellowjackets can be an exception. These highly aggressive wasps fiercely defend their nests, harassing and chasing intruders for long distances, and are likely the ones interrupting picnics or buzzing around trash cans. They're also the ones most likely to sting (and a yellowjacket can do so multiple times).

Once fall arrives, though, all types of yellowjackets become more conspicuous. Colonies are their largest, and because developing drones and fertile females inside each nest need far more protein than earlier broods, workers are their busiest.

Yellowjackets have been going through this cycle for thousands of years, so the best way to deal with them is to be prepared. Cover sugary drinks and garbage cans, and keep an eye on anything you've pulled off the grill. (To a yellowjacket looking for protein to feed the colony's larvae, a piece of barbecue chicken is just as good as carrion.) And if you see yellowjackets around, don't assume they're out to get you. Give them space and they will most likely do the same for you. •



© Roger Smith

Nuisance Nests

In most cases, yellowjacket nests are easy to avoid, but occasionally a queen may set up her home a little too close to yours.

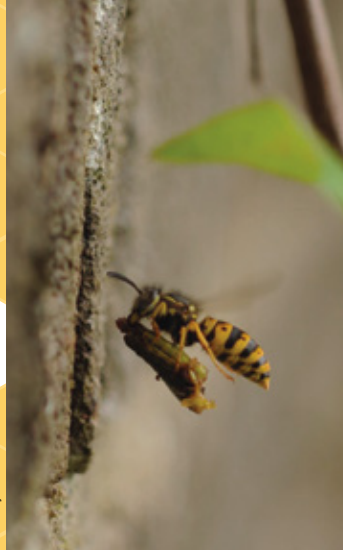
If you're vigilant in early spring, you may be able to spot and deter queens searching for places to nest. It's much easier to discourage one wasp from sharing your home than to deal with a colony of hundreds later on.

If you do find a nest, avoid the area until well into winter, when the bulk of the colony has died. A nest in a wall or other heated area with a source of sugar can survive into December.

If you need to remove a nest in a doorway, wall, play set or lawn because it's causing unwanted confrontations (or someone at home is allergic to stings) it's best to hire a professional. Simply hitting the entrance with bug spray won't work. A nest can be 4 feet deep with a labyrinth of cell-filled tunnels and 2,000 to 3,000 workers.

Sealing the entrance also won't work, especially if the nest is in a wall. Yellowjackets have strong mouthparts called "mandibles" that can easily chew through drywall, so instead of dying off they may simply chew their way into your living room.

© Jeremy Barker



Yellowjacket workers have two jobs: maintain and expand the nest and bring protein-rich meals to the developing larvae inside.

© Bernard Ruelle



▶ To create their paper nests, yellowjackets mix bits of wood and plant fibers with their saliva to make pulp.

© garynn



▲ Underground yellowjacket nests can be over 4 feet deep and have intricate tunnels filled with thousands of cells.

© Thomas Bresson



▲ Each sealed cell of a yellowjacket nest contains a single egg. After the eggs hatch, the growing wasps remain in their cells for about 20 days before emerging as winged adults.

fall calendar

Plants & Wildlife	Page 10	Heritage	Page 14
Ways to Play	Page 10	Nature Art & Performances	Page 16
Health & Well-Being	Page 13	Volunteer	Page 17
Living Green	Page 14		



S	M	T	W	T	F	S
	1	2	3	4	5	6
7	8	9	10	11	12	13
14	15	16	17	18	19	20
21	22	23	24	25	26	27
28	29	30	31	oct		

S	M	T	W	T	F	S
nov				1	2	3
4	5	6	7	8	9	10
11	12	13	14	15	16	17
18	19	20	21	22	23	24
25	26	27	28	29	30	

S	M	T	W	T	F	S
dec						1
2	3	4	5	6	7	8
9	10	11	12	13	14	15
16	17	18	19	20	21	22
23	24	25	26	27	28	29
30	31					

October

- | | |
|-----------------------------------------------------------------------------------------------------------------------------------------------------------------------------------------------------------------------------------------------------------------------------------------------------------------------------------------------------------------------------------------------------------------------------------------------------------------------------------------------------------------------------------------------------------------------------------------------------------------------------------------------------------------------------------------------------------------------------------------------------------------------------------------------------------------------------------------------------------------------------------------------------------------------------------------------------------------------------------------------------------------------------------------------------------------------------------------------------------------|------------------------------------------------------------------------------------------------------------------------------------------------------------------------------------------------------------------------------------------------------------------------------------------------------------------------------------------------------------------------------------------------------------------------------------------------------------------------------------------------------------------------------------------------------------------------------------------------------------------------------------------------------------------------------------------------------------------------------------------------------------------------------------------------------------------------------------------------------------------------------------------------------------------------------------------------------------------------------------------------------------------------------------------------------------------------------------------------|
| <ul style="list-style-type: none"> 1 Forest Fitness Walk 2 Archery: Active Adults
Mindful Walking for Seniors 3 Bird Walk 5 Fishing: Families
Volunteer Workday at the Nursery 6 Halloween Night Walks Ticket Sales Begin
Horse-Drawn Hayrides at Danada
Volunteer Restoration Workday 7 Archery: Families
Horse-Drawn Hayrides at Danada
Nature Poetry Walk 8 Art at Mayslake: Botanical Art Wicked & Wonderful Begins 9 Lamplight Ghost Stories 10 Bird Walk
Volunteer Workday at the Nursery 11 Art at Mayslake: Abstracts & Spirit Animals Begins 12 Archery: Families
Tractor-Drawn Covered Wagon Rides: Autumn Moon
Volunteer Restoration Workday 13 Farm to Table: Honeybees and Local Cheese
Volunteer Restoration Workday 14 Fall Festival at Danada 15 Forest Fitness Walk
Volunteer Workday at the Nursery | <ul style="list-style-type: none"> 16 Ranger Discovery Hike 17 Archery: Active Adults 19 Halloween Night Walks
Ranger Discovery Hike
Tractor-Drawn Covered Wagon Rides: Autumn Moon 20 Corn Harvest
Fishing: Fall Trout Season Opener
Halloween Night Walks
Kayaking the DuPage River
Sunset at the Scenic Overlook
Volunteer Restoration Workday 21 Corn Harvest
Volunteer Restoration Workday 23 Ranger Discovery Hike 24 Archery: Adults 26 Ranger Discovery Hike
Tractor-Drawn Covered Wagon Rides: Autumn Moon
Volunteer Restoration Workday 27 Horse-Drawn Hayrides at Danada
Lamplight Ghost Stories
Make a Difference Day
Trick-or-Treating With Wildlife
Volunteer Restoration Workday
Volunteer Workday at the Nursery 28 Horse-Drawn Hayrides at Danada
Volunteer Restoration Workday 30 Mayslake Hall Moonlight Mansion Tour |
|-----------------------------------------------------------------------------------------------------------------------------------------------------------------------------------------------------------------------------------------------------------------------------------------------------------------------------------------------------------------------------------------------------------------------------------------------------------------------------------------------------------------------------------------------------------------------------------------------------------------------------------------------------------------------------------------------------------------------------------------------------------------------------------------------------------------------------------------------------------------------------------------------------------------------------------------------------------------------------------------------------------------------------------------------------------------------------------------------------------------|------------------------------------------------------------------------------------------------------------------------------------------------------------------------------------------------------------------------------------------------------------------------------------------------------------------------------------------------------------------------------------------------------------------------------------------------------------------------------------------------------------------------------------------------------------------------------------------------------------------------------------------------------------------------------------------------------------------------------------------------------------------------------------------------------------------------------------------------------------------------------------------------------------------------------------------------------------------------------------------------------------------------------------------------------------------------------------------------|



© MrTinDC

Registering on dupageforest.org?

Here's a quick way to find your program online.

1. Visit dupageforest.org and click "Registration & Permits."
2. In the search box, enter the five-digit number next to the program name in this calendar.
3. If a program has more than one date, time or location, click "More" to find the one you want.

November

- 2** Tractor-Drawn Covered Wagon Rides: Autumn Moon
Volunteer Workday at the Nursery
- 3** Fishing: Families
Horse-Drawn Hayrides at Danada
Random Acts of Kindness
Volunteer Restoration Workday
- 4** Horse-Drawn Hayrides at Danada
- 5** Forest Fitness Walk
- 7** Volunteer Workday at the Nursery
- 8** Art at Mayslake: Block Printing Holiday Cards
- 9** Volunteer Restoration Workday
- 10** Horse-Drawn Hayrides at Danada
Volunteer Restoration Workday
- 11** Archery: Families
Fishing: Illinois Smallmouth Alliance Early Show
Horse-Drawn Hayrides at Danada
Make a Snake Ornament Drop-In Family Activity
- 12** Volunteer Workday at the Nursery
- 13** Art at Mayslake: Exploring Watercolor Begins
Fireside Nature Chat for Seniors
Gratitude Walk
- 14** Archery: Active Adults
- 16** Lectures at Mayslake: Illinois Memoirs
- 17** Volunteer Restoration Workday
- 18** Music at Mayslake: Elmhurst Symphony Orchestra
- 19** Forest Fitness Walk
- 23** Ranger Discovery Hike
- 24** Volunteer Restoration Workday
- 26** Forest Fitness Walk
- 27** The Natural World Book Club

December

- 1** 2019 Annual Permit Sales Begin
Music at Mayslake: Acappellago
Volunteer Restoration Workday
- 3** Forest Fitness Walk
- 8** Christmas on the Farm
Holiday Art and Craft Market
Volunteer Restoration Workday
- 9** Archery: Families
Christmas on the Farm
Holiday Art and Craft Market
- 12** Archery: Adults
- 13** Music at Mayslake: WDCB Jazz
- 15** Volunteer Restoration Workday
Wildlife Tracking and ID
- 21** Horse-Drawn Sleigh Rides at Kline Creek Farm
- 22** Horse-Drawn Sleigh Rides at Kline Creek Farm
- 23** Horse-Drawn Sleigh Rides at Kline Creek Farm
- 28** Horse-Drawn Sleigh Rides at Kline Creek Farm
Ranger Discovery Hike
- 29** Horse-Drawn Sleigh Rides at Kline Creek Farm
- 30** Horse-Drawn Sleigh Rides at Kline Creek Farm
- 31** Horse-Drawn Sleigh Rides at Kline Creek Farm



© Kelly Colgan Azar



Plants & Wildlife

Bird Walk 14239

Join these naturalist-led hikes to see how the diversity of birds changes from summer to fall. Ages 18 and up. \$3 per person in advance; \$5 at the walk. Register online or at 630-850-8110.

Oct. 3	7:30 – 9:30 a.m.	York Woods
Oct. 10	7:30 – 9:30 a.m.	McDowell Grove

Make a Snake Ornament Drop-In Family Activity

Get in the holiday spirit Willowbrook style! Craft a colorful snake ornament, and then meet DuPage snakes face-to-face as you learn about their fascinating lives. All ages; under 18 with an adult. Free. No registration. Questions? Call 630-942-6200.

Nov. 11	2 – 3:30 p.m.	Willowbrook
---------	---------------	-------------

Trick-or-Treating With Wildlife 14537

Carve pumpkins and create some creepy crafts for home and to give to the animals as we trick-or-treat along the nature trail. Costumes are encouraged but not required. All ages; under 18 with an adult. \$5 per person. Register online or at 630-942-6200.

Oct. 27	1 – 2 p.m.	Willowbrook
---------	------------	-------------

Wildlife Tracking and ID 14539

Learn about animal tracks and other traits, and discover how animals move by observing some of the center's residents. Then, hit the trail to look for tracks in the wild! Ages 12 and up; under 18 with an adult. \$5 per person. Register online or at 630-942-6200.

Dec. 15	1:30 – 3 p.m.	Willowbrook
---------	---------------	-------------

Ways to Play

Archery

Learn basic techniques and safety essentials. Equipment provided. \$5 per person. Register online or at 630-933-7248.

Active Adults 14398

Ages 50 and up.

Oct. 2	10 – 11:30 a.m.	Churchill Woods
Oct. 17	10 – 11:30 a.m.	Blackwell
Nov. 14	12:30 – 2 p.m.	Herrick Lake

Adults 14395

Ages 18 and up.

Oct. 24	3 – 4:30 p.m.	Blackwell
Dec. 12	10 – 11:30 a.m.	Herrick Lake

Families 14390

Ages 8 and up; under 18 with an adult.

Oct. 7	1 – 2:30 p.m.	Blackwell
Oct. 12	4 – 5:30 p.m.	Churchill Woods
Nov. 11	1 – 2:30 p.m.	Herrick Lake
Dec. 9	1 – 2:30 p.m.	Herrick Lake



Group Adventures by Request

Attention families, friends, youth groups and seniors! Let us plan a ranger-led archery, fishing, kayaking or nature hike program for your group of five to 25 people. Ages and fees vary by program. To schedule yours, call Visitor Services weekdays 8 a.m. – 4 p.m. at 630-933-7248.



Registering on dupageforest.org?

Here's a quick way to find your program online.

1. Visit dupageforest.org and click "Registration & Permits."
2. In the search box, enter the five-digit number next to the program name in this calendar.
3. If a program has more than one date, time or location, click "More" to find the one you want.

Fishing

Fall Trout Season Opener

Drop a line for this popular sport fish at Silver, Grove and Pickerel lakes. Anglers 16 and older must carry valid Illinois fishing licenses with inland trout stamps. All ages. No registration. Questions? Call 630-933-7248.

Oct. 20	6 a.m.	Blackwell, Wood Dale Grove, Pratt's Wayne
---------	--------	----------------------------------------------

Families 14401

Learn fish ecology and identification as well as techniques and regulations. Ages 5 and up; under 18 with an adult. Free. Register online or at 630-933-7248.

Oct. 5	4 – 5:30 p.m.	Blackwell
Nov. 3	10 – 11:30 a.m.	Blackwell

Illinois Smallmouth Alliance Early Show

Don't miss Chicagoland's only fly-fishing show! Sit with expert tyers as they create different patterns, bring the kids to a fly-tying program just for them, and shop select vendors. All ages. \$10 per person. No registration. Questions? Call 630-206-9566.

Nov. 11	10 a.m. – 5 p.m.	Mayslake
---------	------------------	----------



Ready for 2019?

Hey, it'll be here before we know it. Add these dates to your calendar, and when the time comes, get yourself to dupageforest.org and get ready!

ANNUAL PERMITS

Purchase permits for off-leash dog areas, private boating and model crafts for Jan. 1 – Dec. 31, 2019.

Dec. 1 Permit Sales Begin

SUMMER CAMPS FOR KIDS AND TEENS

Wait until you see this year's awesome lineup!

Dec. 1 Camp Descriptions Posted Online

Jan. 1 Early Registration for DuPage Residents Begins

Feb. 1 Open Registration Begins

PICNIC AND FAMILY CAMPING RESERVATIONS

Make reservations anytime up to one year in advance.

NEED A HAND?

Have questions about permits, registrations or reservations? Call Visitor Services at 630-933-7248 or stop by Forest Preserve District headquarters at 35580 Naperville Road in Wheaton Monday – Friday 8 a.m. – 4 p.m.



Fore!

*The Preserve at Oak Meadows in Addison
Maple Meadows in Wood Dale
Green Meadows in Westmont*

A round at a DuPage forest preserve course is a great way to enjoy the outdoors! We have outings and leagues for all abilities. For tee times and specials, visit DuPageGolf.com or call 630-595-0071 for The Preserve, 630-616-8424 for Maple Meadows, or 630-810-5330 for Green Meadows.



Halloween Night Walks

Enjoy Halloween tricks and natural-history tales during a 75-minute guided walk through the woods after dark. Short stops along the way will delight you with dramatic antics and humorous tales. These walks are a spook-tacular treat! All ages; under 18 with an adult. Tickets go on sale Oct. 6 at 9 a.m. at Fullersburg Woods (no phone or online orders). \$12 per person; max. 10 tickets per order. Questions? Call 630-850-8110.

Oct. 19 & 20	6 – 10 p.m.	Fullersburg Woods
--------------	-------------	-------------------



Holiday Art and Craft Market

Shop for quality artisan holiday gifts for family and friends. Part of the proceeds will benefit the restoration of Mayslake Hall. All ages. Free admission. No registration. Questions? Call 630-206-9566.

Dec. 8	11 a.m. – 6 p.m.	Mayslake
Dec. 9	10 a.m. – 4 p.m.	Mayslake

Kayaking the DuPage River

Take a 5-mile guided paddle through Blackwell, Warrenville Grove and McDowell Grove. Equipment provided. Ages 12 and up; under 18 with an adult. \$30 per person. Register at warrenvilleparks.org or 630-393-7279.

Oct. 20	9 a.m. – Noon	Multiple
---------	---------------	----------

Winter Fun

SNOW TUBING

Blackwell Forest Preserve in Warrenville

When there's plenty of snow on Mount Hoy (usually more than 3 inches) take a thrilling 800-foot ride down the hill. Only Forest Preserve District inner tubes are allowed. Rentals are \$10 per tube per day and end at 3:30 p.m. Questions? Call 630-933-7248.

Dec. 1 – Feb. 24

Saturdays & Sundays

**Plus Dec. 24, Dec. 26 – 28, Dec. 31 – Jan. 4,
Jan. 14, Jan. 21 & Feb. 18**

11 a.m. – 4 p.m.

SNOWSHOES

Blackwell Forest Preserve in Warrenville

*District Headquarters at Danada Forest Preserve
in Wheaton*

Fullersburg Woods in Oak Brook

Explore the forest preserves by snowshoes! Rentals are \$10 for two hours or \$15 per day and are only available when there's plenty of snow on the trails.

- When Mount Hoy's open, rent at the base until 2 p.m.
- On weekdays when Mount Hoy isn't open, rent 8 a.m. – 2 p.m. at Forest Preserve District headquarters. Call 630-933-7248 for availability.
- Rent daily 10 a.m. – 2 p.m. at Fullersburg Woods Nature Education Center. Call 630-850-8110 for availability.



Registering on dupageforest.org?

Here's a quick way to find your program online.

1. Visit dupageforest.org and click "Registration & Permits."
2. In the search box, enter the five-digit number next to the program name in this calendar.
3. If a program has more than one date, time or location, click "More" to find the one you want.

Ranger Discovery Hike 14432

Learn all you ever wanted to know about the forest preserves — recreational fun, plants and animals, history, and more — on these wildly entertaining ranger-led hikes. All ages; under 18 with an adult. Free. Register online or at 630-933-7248.

Oct. 16	9 – 10:30 a.m.	Waterfall Glen
Oct. 19	4 – 5:30 p.m.	Greene Valley
Oct. 23	9 – 10:30 a.m.	Meacham Grove
Oct. 26	4 – 5:30 p.m.	Maple Grove
Nov. 23	9 – 10:30 a.m.	Waterfall Glen
Dec. 28	3 – 4:30 p.m.	Meacham Grove

Mindful Walking for Seniors 14532

Experience the healing benefits of nature and gain tips on mindfulness on a 1-mile (or shorter) guided walk designed just for you! Come alone or bring a friend; trails can accommodate walkers, canes and wheelchairs. Ages 60 and up. Free. Register online or at 630-933-7248.

Oct. 2	1:30 – 3:30 p.m.	St. James Farm
--------	------------------	----------------

The Natural World Book Club 14379

Join a naturalist for an exclusive after-hours fireside book discussion of Barbara Kingsolver's *Animal, Vegetable, Miracle: A Year of Food Life*, the New York Times best-seller that's changed the way suburban families look at food. Ages 18 and up. Free. Register online or at 630-850-8110.

Nov. 27	7 – 8:30 p.m.	Fullersburg Woods
---------	---------------	-------------------

Health & Well-Being

Fireside Nature Chat for Seniors 14533

Join fellow life-long outdoor enthusiasts for hot chocolate and cookies, and share your favorite experiences from spending time in nature. Walker- and cane-friendly. Ages 60 and up. \$3 per person. Register online or at 630-933-7248.

Nov. 13	1:30 – 3 p.m.	Mayslake
---------	---------------	----------

Forest Fitness Walk 14317

Enjoy the wonders of the preserves with a naturalist, and get some healthy exercise on these brisk walks that increase in distance every week. Ages 18 and up. \$3 per person in advance; \$5 at the walk. Register online or at 630-850-8110.

Oct. 1	8:30 – 10:30 a.m.	Danada
Oct. 15	8:30 – 10:30 a.m.	Greene Valley
Nov. 5	8:30 – 10:30 a.m.	St. James Farm
Nov. 19	8:30 – 10:30 a.m.	Oak Meadows
Nov. 26	8:30 – 10:30 a.m.	Waterfall Glen
Dec. 3	8:30 – 10:30 a.m.	Mallard Lake

NEW! Gratitude Walk 14368

In time for Thanksgiving, contemplate what you're grateful for on a leisurely guided walk. Bring pen and paper and jot down your thoughts to share as you stroll, if the mood strikes you. Ages 18 and up. Free. Register online or at 630-206-9566.

Nov. 13	9:30 – 11 a.m.	Mayslake
---------	----------------	----------

Nature Poetry Walk 14504

Listen to poetry and experience the shared rhythms and connections of written verse and nature on an afternoon walk. Ages 12 and up; under 18 with an adult. Free. Register online or at 630-580-7025.

Oct. 7	1:30 – 3 p.m.	St. James Farm
--------	---------------	----------------

Sunset at the Scenic Overlook 14433

Drink in the sunset from 190 feet above the surrounding landscape. All ages; under 18 with an adult. Free. Register online or at 630-933-7248.

Oct. 20	5:15 – 6:45 p.m.	Greene Valley
---------	------------------	---------------



© Michael Kappel

Scenic Overlook

Greene Valley Forest Preserve in Naperville

Get a bird's-eye view of Greene Valley — and the Chicago skyline — from 190 feet above the landscape. Free. Questions? Call 630-792-2100.

Through Oct. 28

Saturdays & Sundays 11 a.m. – 6 p.m.

Weather or IEPA work may affect hours without notice.

© Marc Buehler

Living Green

Farm to Table: Honeybees and Local Cheese 14359

Ever wonder how much honey comes from one hive or how many gallons of milk it takes to make cheese? Discover the answers and the histories of these foods as you learn how to pair the two while tasting local selections. Ages 18 and up. \$15 per person. Register online or at 630-876-5900.

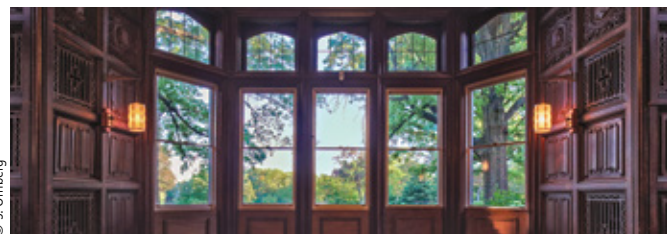
Oct. 13 6 – 7:30 p.m. Kline Creek Farm

Heritage

Christmas on the Farm

Learn the history of popular traditions, take a photo with Santa in his sleigh, sing carols around the warming fire, enjoy cookies and hot apple cider, and go on a horse-drawn sleigh ride (weather permitting). All ages; under 13 with an adult for sleigh rides. Free admission. Sleigh rides \$5 per person ages 5 and up; under 5 free. No registration. Questions? Call 630-876-5900.

Dec. 8 & 9 1:30 – 3:30 p.m. Kline Creek Farm



© S. Ormberg

Restoration-in-Progress Tours

Mayslake Peabody Estate in Oak Brook

Learn about the past — and future — of this historic 1920s Tudor Revival-style mansion. All ages; under 18 with an adult. \$8 per person. No registration. Questions? Call 630-206-9566.

Wednesdays 11 a.m. & 12:30 p.m.

Saturdays 9:30, 10, 11 & 11:30 a.m.

No tours Dec. 8 – Jan. 5



Corn Harvest

After attending Corn College, stroll to the fields to help hand-pick the corn, shock the stalks and fill the corn cribs. Then, stop near the farmhouse to make a corn-husk figure for home. All ages. Free. No registration. Questions? Call 630-876-5900.

Oct. 20 & 21 10 a.m. – 4 p.m. Kline Creek Farm



Fall Festival at Danada

Join a celebration of the horse and the season at this annual event. Enjoy a parade of breeds, continuous equestrian performances, hayrides, pony rides, face painting, grooming demonstrations, educational displays, food and more. Activities ongoing. All ages. Free admission and parking; fees for some activities. No registration. Questions? Call 630-668-6012.

Oct. 14 11 a.m. – 5 p.m. Danada

Lamplight Ghost Stories

Halloween isn't just for little kids! Enjoy ghoulish tales told by lamplight (indoors at Mayslake and outdoors at Kline Creek Farm). Ages 12 and up; under 18 with an adult. Free. No registration. Questions? Call 630-876-5900.

Oct. 9 5:30 – 6:30 p.m. Mayslake
Oct. 27 5:30 – 6:30 p.m. Kline Creek Farm



Registering on dupageforest.org?

Here's a quick way to find your program online.

1. Visit dupageforest.org and click "Registration & Permits."
2. In the search box, enter the five-digit number next to the program name in this calendar.
3. If a program has more than one date, time or location, click "More" to find the one you want.

Horse-Drawn Rides

First-come, first-served. All ages; under 13 with an adult. \$5 per person ages 5 and up; under 5 free. No registration.

Hayrides at Danada

Take a seat on a straw bale and enjoy a leisurely 30-minute ride around the center and through the forest preserve. For questions and private group rides, call 630-668-6012.

Oct. 6, 7, 27 & 28	1, 1:45 & 2:30 p.m.	Danada
Nov. 3, 4, 10 & 11	1, 1:45 & 2:30 p.m.	Danada

Sleigh Rides at Kline Creek Farm

Hear about farming with real horsepower on a 20-minute ride through the farmstead and fields, if snow and weather permit. For daily ride updates and private rides, call 630-876-5900.

Dec. 21 – 23	2, 2:30 & 3 p.m.	Kline Creek Farm & 28 – 31
--------------	------------------	----------------------------

Also enjoy sleigh rides at Christmas on the Farm Dec. 8 & 9!

Lectures at Mayslake: Illinois Memoirs 14522

Celebrate Illinois' bicentennial and literary heritage with John Hallwas as he explores world-famous memoirs by Chief Black Hawk, Ulysses S. Grant, Jane Addams and others, and discuss the need to document the past in a rapidly changing culture. Funded in partnership with the Illinois Humanities Council. Ages 18 and up. Free. Register online or at 630-206-9566.

Nov. 16	10 a.m. – Noon	Mayslake
---------	----------------	----------

Mayslake Hall Moonlight Mansion Tour 14373

Take a docent-guided tour of the mansion after the sun sets, and hear about urban legends, hauntings, and stories of mischief while learning about the building's architecture, history and previous owners. Ages 12 and up; under 18 with an adult. \$15 per person. Register online or at 630-206-9566.

Oct. 30	7 – 8:30 p.m.	Mayslake
---------	---------------	----------



1890s Living

Kline Creek Farm in West Chicago

Registration is not required for these free programs. Questions? Call 630-876-5900.

BLACKSMITHING DEMONSTRATIONS

Stop by the wagon shed to see the blacksmith demonstrate the tools and techniques of the trade.

Saturdays 1:30 – 3:30 p.m.

FARMHOUSE MUSEUM TOUR

Explore the lifestyle of a successful farm family as you tour the farmhouse museum. Learn how the home was a place for work as well as relaxation and how it served as the building block of the rural community.

Oct. 1 – Nov. 26 (except Nov. 22)

Thursday – Monday 10 a.m. – 4 p.m. on the hour

And join these special seasonal tours, too!

CHRISTMAS MEMORIES

Discover Victorian holiday traditions.

Nov. 29 – Jan. 7

Thursday – Monday 10 a.m. – 3 p.m. on the hour

LIVING BY LAMPLIGHT

Explore the challenges and benefits of living by the light of the sun and kerosene lamps.

Dec. 1 – 31

Thursday – Monday 4 – 4:40 p.m.



© Elizabeth Pector



© B. Dixon

fall calendar

Tractor-Drawn Covered Wagon Rides

All ages; under 13 with an adult. \$5 per person ages 5 and up; under 5 free. Register online or at 630-580-7025.

Autumn Moon 14436

Enjoy a rare chance to experience the preserve after the sun sets on a 30-minute ride, and hear stories about the moon. Then, enjoy hot cocoa and s'mores by the fire.

Oct. 12, 19 & 26	6, 6:30 & 7 p.m.	St. James Farm
Nov. 2	6, 6:30 & 7 p.m.	St. James Farm

Fall Colors 14508

Enjoy the beauty of fall on a 30-minute ride through the farm. We'll schedule rides when the colors start to turn, so call or check online for dates.

TBD	1 & 2 p.m.	St. James Farm
-----	------------	----------------

Theater and More at Mayslake

Mayslake Peabody Estate in Oak Brook

FIRST FOLIO THEATRE'S *THE MADNESS OF EDGAR ALLAN POE*

Poe and his beloved wife, Virginia, guide you through the rooms of historic Mayslake Hall to experience such tales of madness as "The Tell-Tale Heart," "The Pit and the Pendulum" and "The Masque of the Red Death." Ages 12 and up; under 18 with an adult. \$25 – \$44 per person. Tickets at 630-986-8067 or firstfolio.org.

Oct. 3 – Nov. 4

Sundays & Thursdays 3 – 5 p.m.

Wednesday – Saturday 8 – 10 p.m.

Plus Oct. 13 – Nov. 3 Saturdays 4 – 6 p.m.
Oct. 28 – Nov. 4 Sundays 7:30 – 9:30 p.m.

ART EXHIBITS

All ages. Free. No registration. Questions? Call 630-206-9566.

Mayslake Nature Study and Photography Club

Sept. 26 – Nov. 5

FotoMuses' *The Four Seasons*

Nov. 7 – Dec. 4

Monday – Friday 9 a.m. – 3 p.m.

Saturdays 9 a.m. – 1 p.m.

Nature Art & Performances

Art at Mayslake

Abstracts & Spirit Animals 14364

Explore the art of creating collage papers, stencils and mixed media using the spirits, habits and environments of the animals around us as inspiration. Thursdays. Ages 18 and up. \$185 plus \$20 supply fee per person. Register online or at 630-206-9566.

Oct. 11 – Nov. 15	9:30 a.m. – Noon	Mayslake
-------------------	------------------	----------

Block Printing Holiday Cards 14374

Discover the relevance of holly, mistletoe, poinsettias and even mushrooms on Christmas and New Year's greeting cards, and learn basic relief printing techniques as you create your own beautiful cards for the holidays. Ages 18 and up. \$20 per person. Register online or at 630-206-9566.

Nov. 8	1 – 3 p.m.	Mayslake
--------	------------	----------

Botanical Art Wicked & Wonderful 14365

Learn about wicked and wonderful plants (including some that ward off evil spirits!) and how to use them as inspiration for creating works in graphite and watercolor or watercolor alone. Supplies included. Mondays. Ages 18 and up. \$100 per person. Register online or at 630-206-9566.

Oct. 8 – 29	7 – 9:30 p.m.	Mayslake
-------------	---------------	----------

Exploring Watercolor 14366

Learn about wicked and wonderful plants (including some that ward off evil spirits!) and how to use them as inspiration for creating works in graphite and watercolor or watercolor alone. Tuesdays except Nov. 20. Ages 18 and up. \$105 per person. Register online or at 630-206-9566.

Nov. 13 – Dec. 18	10 a.m. – 12:30 p.m.	Mayslake
-------------------	----------------------	----------



Registering on dupageforest.org?

Here's a quick way to find your program online.

1. Visit dupageforest.org and click "Registration & Permits."
2. In the search box, enter the five-digit number next to the program name in this calendar.
3. If a program has more than one date, time or location, click "More" to find the one you want.

Music at Mayslake

Acappellago

Join this a cappella choir for a musical journey of songs to celebrate the holiday season. Ages 12 and up; under 18 with an adult. \$15 – \$17 per person. Tickets at acappellago.org or 708-484-3797.

Dec. 1	7:30 – 9:30 p.m.	Mayslake
--------	------------------	----------

Elmhurst Symphony Orchestra

Hear accomplished members of the ESO perform Bolling's *Suite for Flute and Jazz Piano Trio* with Jeremy Kahn. Ages 12 and up; under 18 with an adult. \$12 – \$25 per person. Tickets at elmhurstsymphony.org or 630-941-0202.

Nov. 18	2:30 – 4:30 p.m.	Mayslake
---------	------------------	----------

WDCB Jazz 14424

Join us for a night of unforgettable jazz. All ticket proceeds will go to the restoration of historic Mayslake Hall. Ages 12 and up; under 18 with an adult. \$15 per person. Register online or at 630-206-9566.

Dec. 13	7:30 – 9:30 p.m.	Mayslake
---------	------------------	----------

Volunteer Restoration Workday 14444

Help improve a prairie or woodland by collecting seeds or removing nonnative plants. Ages 8 and up; under 18 with an adult. Free. Register online or at 630-206-9630 at least five days in advance (10 days by phone for groups of five or more).

Oct. 6	9 a.m. – Noon	Churchill/Glacial
Oct. 6	9 a.m. – Noon	St. James Farm
Oct. 6, 13, 20, 21, 27 & 28	9 a.m. – Noon	Springbrook
Oct. 6 & 20	9 a.m. – Noon	Maple Grove
Oct. 6 & 20	9 a.m. – Noon	W. Chicago Prairie
Oct. 12 & 26	1 – 3 p.m.	Danada
Nov. 3, 10 & 17	9 a.m. – Noon	Maple Grove
Nov. 3 & 17	9 a.m. – Noon	Springbrook
Nov. 3 & 17	9 a.m. – Noon	W. Chicago Prairie
Nov. 3 & 24	9 a.m. – Noon	Churchill/Glacial
Nov. 9	1 – 3 p.m.	Danada
Dec. 1	9 a.m. – Noon	Springbrook
Dec. 1, 8 & 15	9 a.m. – Noon	Maple Grove
Dec. 1 & 15	9 a.m. – Noon	W. Chicago Prairie
Dec. 8	1 – 4 p.m.	Springbrook

Volunteer

Make a Difference Day

Join volunteers across the U.S. at one of the largest single days of service, and help a local habitat by removing litter. Scouts, families and all fans of the forest preserves are welcome. All ages; under 18 with an adult. Free. Register at 630-462-8707.

Oct. 27	9 a.m. – Noon	East Branch
---------	---------------	-------------

Random Acts of Kindness

Join Scouts, families and other forest preserve fans to clean and beautify this popular preserve. All ages; under 18 with an adult. Free. Register at 630-462-8707.

Nov. 3	9 a.m. – Noon	Hidden Lake
--------	---------------	-------------



Volunteer Workday at the Nursery 14482

Help weed, water, or collect and clean seeds from native grasses and flowers. Ages 12 and up; under 18 with an adult. Free. Register online or at 630-206-9630 at least five days in advance (10 days by phone for groups of five or more).

Oct. 5, 10, 15 & 27	8 – 11 a.m.	Blackwell
Nov. 2, 7 & 12	8 – 11 a.m.	Blackwell

Nuts About Oaks

by **SCOTT MEISTER**, NATURAL RESOURCES

Whenver someone asks me, “How can I attract more wildlife to my backyard?” my response is always the same: “Plant an oak!”

Many homeowners avoid planting these stately trees because they think they’re slow-growing, but some oaks, such as the northern red oak, can grow more than 2 feet per year. More important than growth rate (especially if you’re a squirrel or woodpecker) is the value oaks hold for wildlife, which exceeds that of many trees.

Although nicknamed the Prairie State, Illinois was nearly 38 percent woodland prior to European settlement. Many of these areas were dominated by oaks, which kick-started wildlife’s centuries-long dependency on the trees for food and shelter.

Packed with fats and carbohydrates, oak acorns are an appealing source of much-needed nutrition for more than 100 species of wildlife, including white-tailed deer, turkeys, blue jays and squirrels. According to one study, wildlife can eat up to 83 percent of an oak’s acorn crop.

But not all acorns are created equal — or eaten equally in fall and spring. Oaks belong to one of two groups: white (white, swamp white, bur, chinquapin) and red (northern red, pin,

black). Of the two, white oak acorns have fewer tannins. This makes them more palatable (and preferable) to wildlife. White oak acorns also germinate more quickly, which means they start to convert their fats and carbohydrates into sprouts earlier in the growing season. As a result, animals may eat a mix of white and red in fall, but in spring, when many of the tastier white oak acorns have already been consumed and those that remain are starting to sprout, animals may rely more on red.

Migrating songbirds are another guild that depends on oaks for food, although not for the acorns. Over 500 species of insects live and feed on oaks; other widely planted trees only support a handful. Because of this disparity, you’re more likely to attract migrating birds to your yard with oaks than, say, maples. Oaks’ catered bug buffets allow Wilson’s warblers, American redstarts, common yellowthroats and other migrants to find food faster, saving time and energy for their long journeys ahead.

In addition to being a critical source of food, oak trees offer valuable shelter. Natural cavities can form in any tree, but larger species, oaks included, can support larger cavities without detriment to the trees themselves. This means more sizes and species of wildlife are able to claim squatter’s rights. Red-headed



◀ In fall and spring, Wilson’s warblers and other migrating birds rely on DuPage oaks for quick insect meals.



◀ Like squirrels, blue jays stash acorns in fall so they have a source of high-energy carbohydrates in winter.

➤ Acorns are an indispensable part of a southern flying squirrel's diet.

© Stan Tekiela



woodpeckers, identified as in greatest need of conservation by the Illinois Wildlife Action Plan, rely on cavities to raise their young as do eastern bluebirds and southern flying squirrels. Because they all readily nest in oaks, adding oaks to your yard can make all three great additions to your wildlife watch list.

Even an oak tree's leaves are superior when it comes to habitat. Leaves on deciduous trees "senesce" in fall, which means they die and dry up. On many trees the leaves soon drop, but the browning leaves on some oaks remain on the branches through winter. This gives smaller tree-dwelling creatures cover from predators at a time when cover is scarce. When an oak does drop its leaves, they decay more slowly and remain in the environment longer than others, creating protected areas for mice, snakes, insects and other animals that shelter on the ground.

There's a Greek proverb that states, "A society grows great when old men plant trees whose shade they know they shall never sit in." Planting an oak tree in your backyard will not only enrich your quality of life today but also welcome and maintain healthy populations of wildlife for years to come. •

From Acorn to Oak in Your Own Backyard

Know someone with an oak tree? Ask for some acorns and then follow these steps to grow your own! (Remember, collecting anything plant-related in a forest preserve isn't allowed.)



1. Select healthy acorns.

In fall, choose acorns that have recently fallen or are easy to pick.

2. Perform a float test.

Place the acorns in water for at least an hour. Discard any that float; they won't grow. Dry off any that sank.

3. "Stratify."

Acorns need a period of cold, moist dormancy called "stratification" to germinate. To stratify yours, place them in a sealed plastic bag with moistened peat, vermiculite, sawdust or similar materials. Keep the bag in a refrigerator for at least 40 days.

4. Monitor.

Periodically check your acorns. Keep the material around them moist but not too wet, and don't allow it to dry out. Roots may emerge after 40 days, but even if they don't you can still move to the next step.

5. Place in pots.

For each acorn, fill a well-draining pot with soil and plant the acorn an inch below the surface. Put the pot indoors by a south-facing window so it gets the warm winter sun.

6. Wait and then plant!

Keep the soil moist and don't let it dry out. In a few weeks, you should start to see growth above the surface. In spring after any chance of frost has passed, you can plant your young oaks outside.



istock.com/sergio

➤ Because oak leaves take longer to decay than those from other trees, they provide valuable cover and camouflage for ground-dwelling animals, such as American toads.



© Will Parson



◀ Nature color hunts teach kids to work together on new challenges. Each time is different, and each time is fun! ▶

Nature COLOR Hunt

If you have little ones in your life and search the web for ways to keep them occupied on the weekends, you’ve probably come across a neat idea that’s also perfect in DuPage forest preserves: a nature color hunt!

A nature color hunt is similar to a scavenger hunt but with a couple of minor changes. First, instead of looking for specific objects, you look for things in nature that are certain colors. Second, because the ones we’re talking about in this article are for the forest preserves, you can’t collect anything you find, but that’s OK. There are lots of fun ways to record what you discover (check out the box on the next page), and they all have super benefits!

Foremost, they get kids outside walking, stretching, squatting and moving around. (All of those things grownups look for to guarantee a good night’s sleep.) They also get kids in the habit of

taking a closer look at things in nature. For instance, they may think “green” or “brown” when they see grasses, but a closer look at, say, big bluestem (a common DuPage prairie grass) reveals beautiful reddish purple seedheads.

Nature color hunts are easy for grownups, too, because they don’t require a lot of prep time (you can make a quick one with a blank sheet of paper) and there’s no mess. They’re easy to adapt to different ages and skills, and (bonus) they’re free!

One final plus is they last longer than just the activity. At the end of a hunt, even after you’re home, you can discuss which types of colors you saw the most and where. If your little artists drew what they saw, you can have them take time to color their illustrations. Do these color hunts seasonally, and you can keep the nature talk going year-round! •

Ways to Play

As with any scavenger hunt, you need a list of things to look for. To get started, download and print the different options below from dupageforest.org. Click “News” in the blue bar at the top and then “Conservationist” in the right column. Then navigate to this story under “Recent Issues Fall 2018” for a link to each PDF.

Check the Box

Even the youngest explorers can join the hunt. Each sheet has several colors with check boxes little hands can fill in when they spot something.

Draw It

A space next to each color gives kids a place to draw what they find. In the preserves or at home, they can then color their artwork.

Make Your Own

This version lets kids pick the colors they’ll search for. They fill in the boxes with their favorite colors before they head out and then draw what they find.

Snap It

Instead of drawing pictures of their finds, kids take photos! Next to each color on the sheet is a place to jot down notes about their discoveries. They can then use their photos and notes to make a scrapbook.

Nature COLOR Hunt

Look for something in each color, and draw what you find!

Today's Date October 3 Forest Preserve Fullersburg

  robin	  leaf
  squirrel	  flower
  tree moss	



- A single New England aster — and any guests — can give explorers multiple color finds!



- A closer look at big bluestem reveals the plant’s reddish purple tips.



- Evergreen mosses, such as graceful chain moss, mean you can find vibrant greens in the preserves even in late fall and winter.



- Nature color hunts give young explorers a fun reason to take a close look at the different parts that make up the preserves.

directory



GENERAL *Contacts*

HEADQUARTERS

35580 Naperville Road
Wheaton, IL 60189

The office is open Monday – Friday
8 a.m. – 4:30 p.m. and is closed on
Saturdays, Sundays and select holidays.

Website

dupageforest.org

Email Address

forest@dupageforest.org

Main Number

630-933-7200

TTY

800-526-0857

CONSERVATIONIST SUBSCRIPTION LINE

630-933-7085

FUNDRAISING AND DEVELOPMENT

630-871-6400

LAW ENFORCEMENT

630-933-7240

VISITOR SERVICES

630-933-7248

VOLUNTEER SERVICES

630-933-7233

GOLF *Courses*

THE PRESERVE AT OAK MEADOWS

900 N. Wood Dale Road
Addison, IL 60101
630-595-0071

MAPLE MEADOWS GOLF COURSE

272 S. Addison Road
Wood Dale, IL 60191
630-616-8424

GREEN MEADOWS GOLF COURSE

18W201 W. 63rd St.
Westmont, IL 60559
630-810-5330



PRESERVE *Hours*

Most forest preserves are open daily
from one hour after sunrise until
one hour after sunset.

ACCESSIBILITY

Individuals with accessibility needs or
concerns should contact the District's
ADA coordinator at 630-933-7683 or
TTY 800-526-0857 at least 48 hours
before their visit.

EDUCATION *Centers*

DANADA EQUESTRIAN CENTER

35507 Naperville Road
Wheaton, IL 60189
630-668-6012

The center's office is open Monday –
Friday 8 a.m. – 4:30 p.m. and is closed on
Saturdays, Sundays and select holidays.

FULLERSBURG WOODS NATURE EDUCATION CENTER

3609 Spring Road
Oak Brook, IL 60523
630-850-8110

April – October the center is open daily
9 a.m. – 5 p.m. but is closed on select
holidays. November – March hours
may vary.

KLINE CREEK FARM

1N600 County Farm Road
West Chicago, IL 60185
630-876-5900

The farm is open Thursday – Monday
9 a.m. – 5 p.m. and is closed on Tuesdays,
Wednesdays and select holidays.

MAYSLAKE PEABODY ESTATE

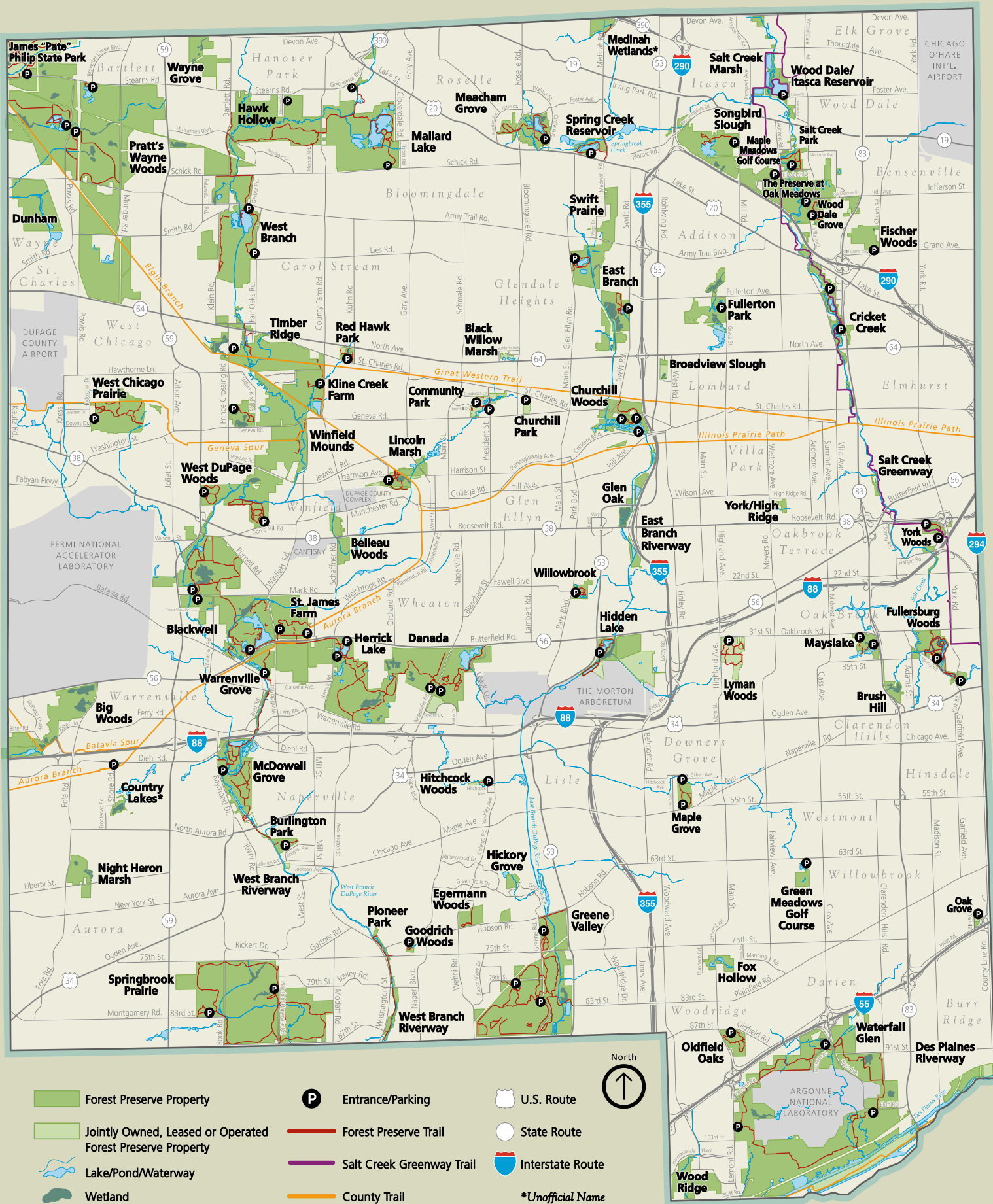
1717 W. 31st St.
Oak Brook, IL 60523
630-206-9566

The estate is open only during scheduled
programs and events.

WILLOWBROOK WILDLIFE CENTER

525 S. Park Blvd.
Glen Ellyn, IL 60137
630-942-6200

The visitor center and the surrounding
Willowbrook Forest Preserve are open daily
9 a.m. – 5 p.m. The animal admittance
area is open 8:30 a.m. – 6 p.m. All areas
are closed on select holidays.





P.O. Box 5000
Wheaton, IL 60189-5000
630-933-7200
dupageforest.org

PRSRT STD
U.S. Postage
PAID
Carol Stream, IL
Permit No. 96

please deliver to current resident

the Conservationist

A Quarterly Publication of the Forest Preserve District of DuPage County

Fall 2018

