

Par	Tips	Black	Blue	White	Red	
1	4	391	362	312	284	
2	5	582	540	500	430	
3	3	186	179	156	122	
4	4	356	337	302	273	
5	5	534	514	497	463	
6	4	408	386	365	311	
7	4	382	359	342	295	
8	3	176	156	146	125	
9	4	467	449	425	403	
36	3482	3282	3096	2856	2627	
10	3	226	203	193	177	
11	4	438	412	376	359	
12	4	363	340	331	300	
13	5	566	530	490	464	
14	4	442	394	360	317	
15	5	546	525	492	452	
16	4	359	329	319	293	
17	3	198	185	165	140	
18	4	469	431	391	342	
36	3607	3349	3117	2844	2358	
TTL	72	7089	6631	6213	5700	4985

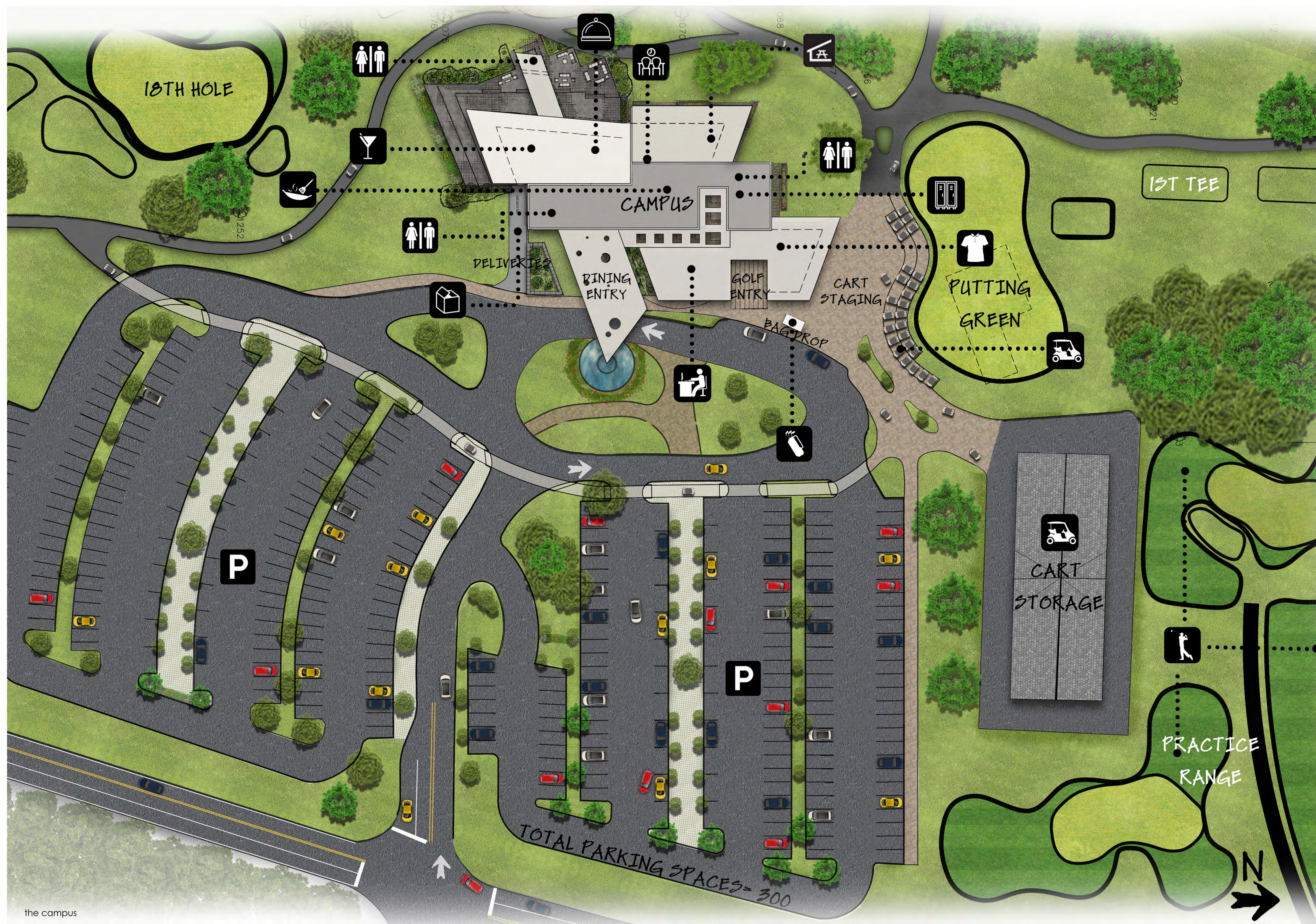
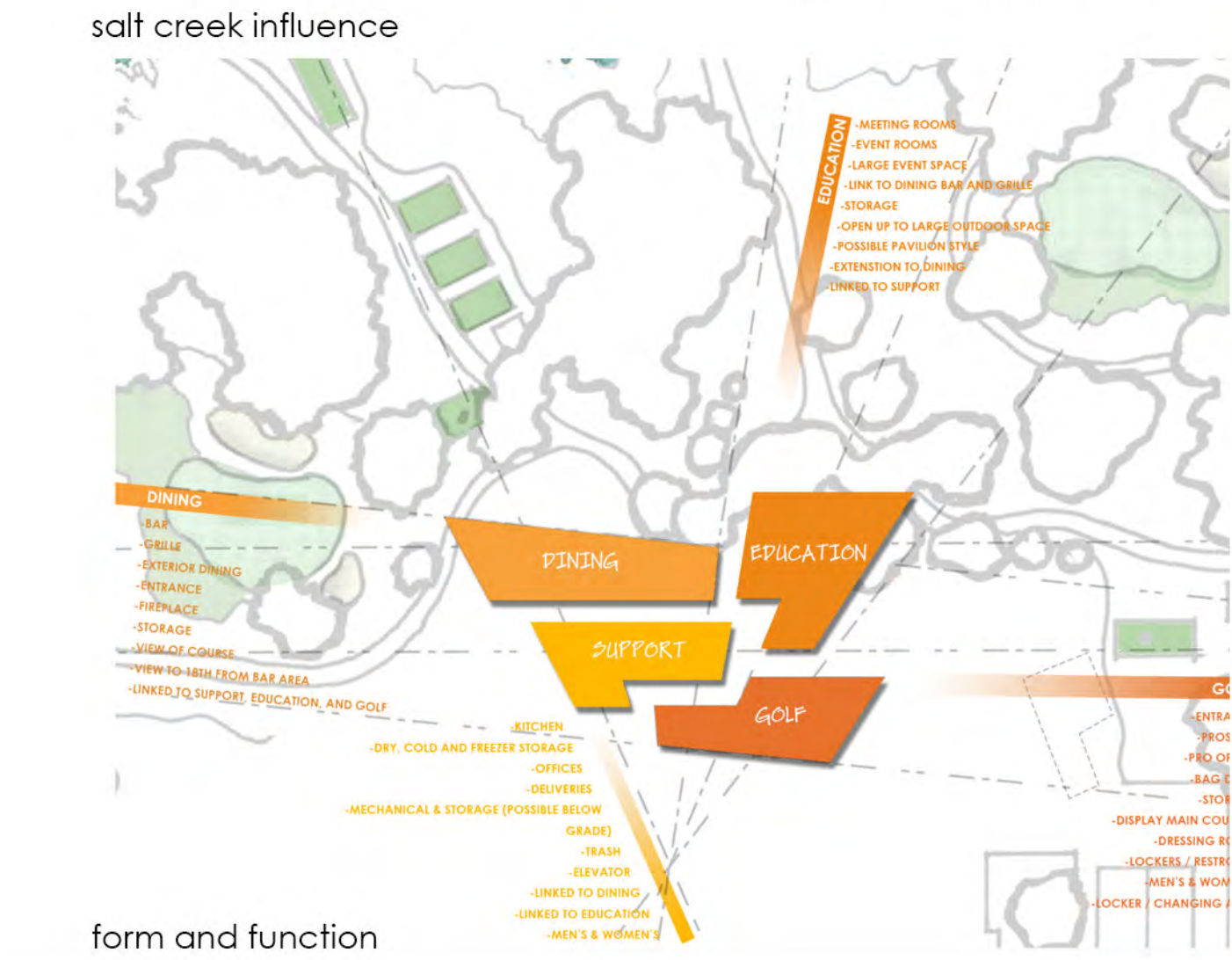
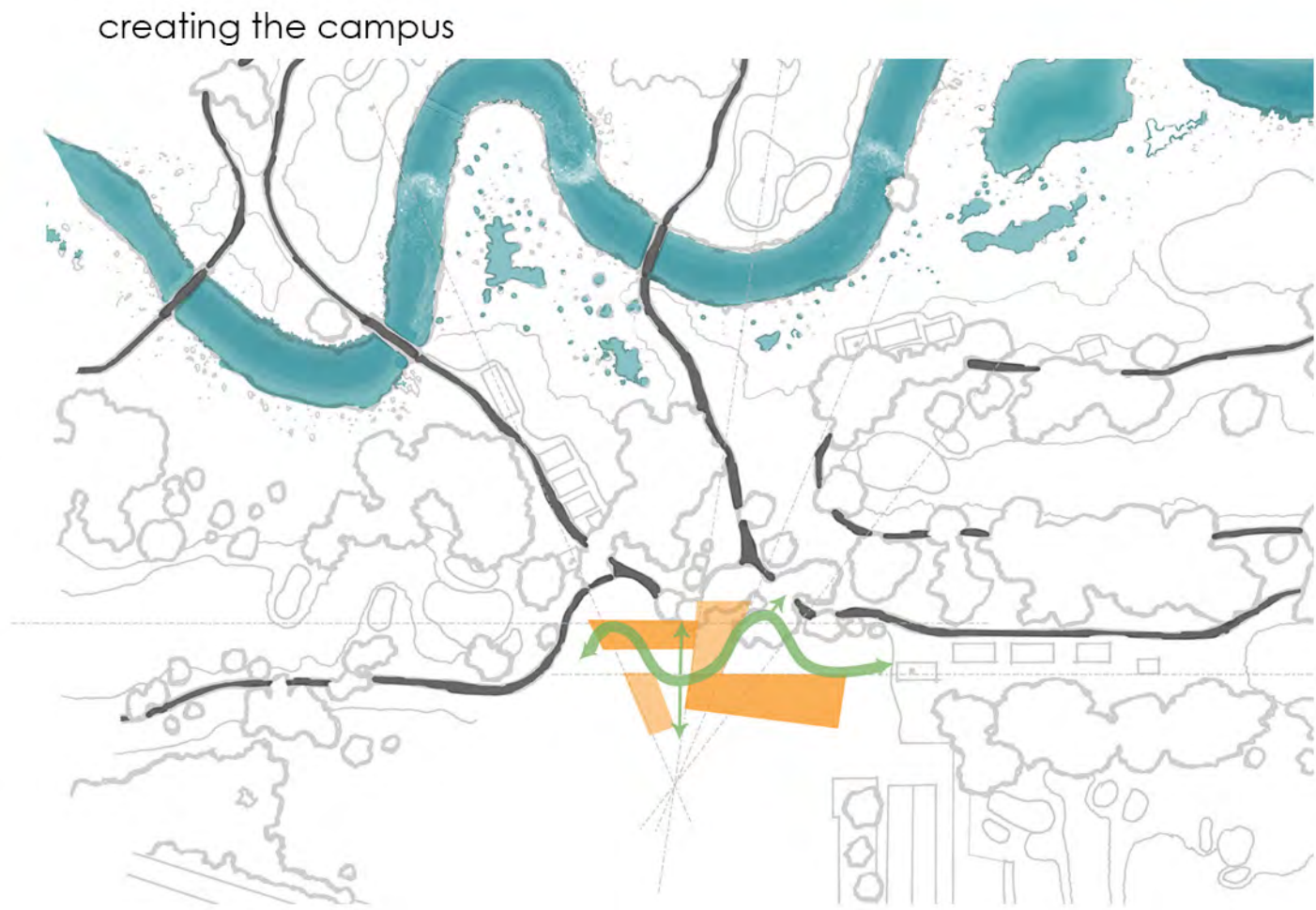
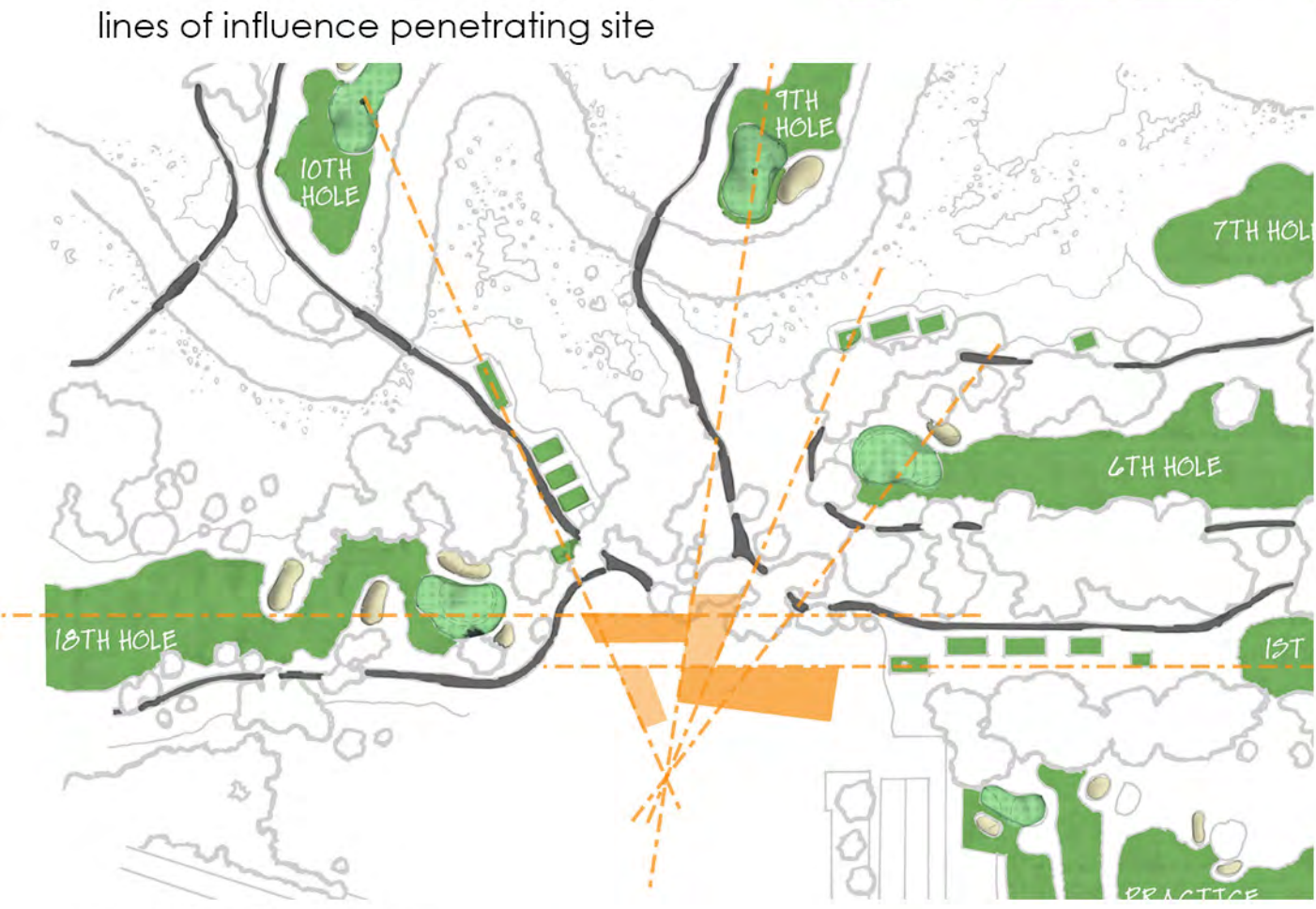


The Preserve
at Oak Meadows



April 14, 2017





THE PRESERVE AT OAK MEADOWS- FINAL SCHEMATIC DESIGN

JULY 2017



FACTS: THE PRESERVE - CAMPUS

INTERIOR SQUARE FOOTAGES:

UPPER LEVEL: 12,790 S.F.
 LOWER LEVEL: 4,370 S.F.

TOTAL: 17,160 S.F.

-CORE DINING: 60 PPL

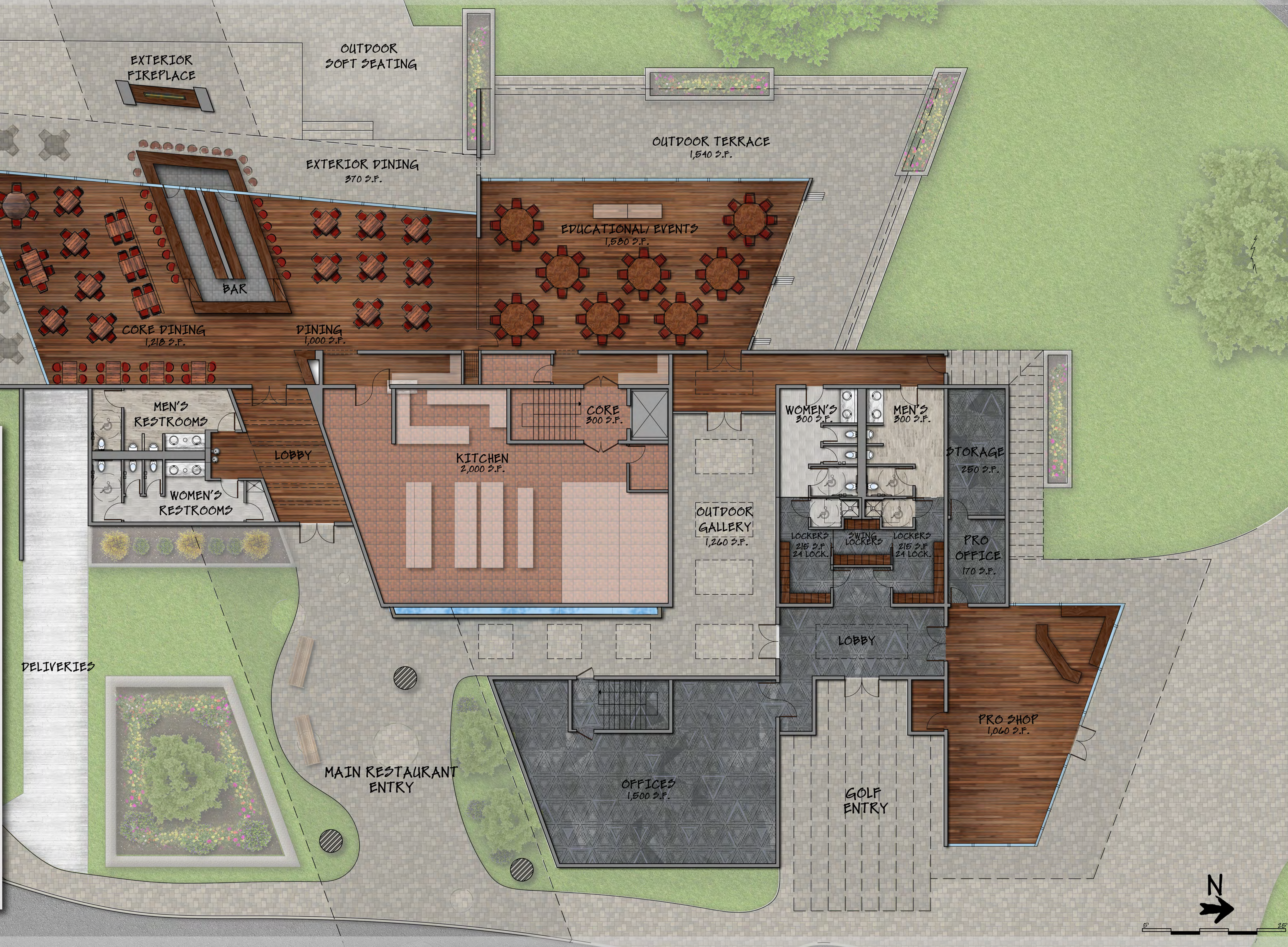
-DINING: 50 PPL

-BAR: 15 PPL

-CORE DINING + DINING +
 EVENTS = 180 PPL

-DINING + EVENTS + OUTDOOR
 TERRACE AT NORTH-WEST
 = 220 PPL
 UNENCUMBERED CORE DINING

-EXTERIOR GALLERY
 PRE-FUNCTION = 126 PPL





THE PRESERVE AT OAK MEADOWS FINAL SCHEMATIC DESIGN

JULY 2017



FACTS: THE PRESERVE - CAMPUS

INTERIOR SQUARE FOOTAGES:

UPPER LEVEL: 12,790 S.F.

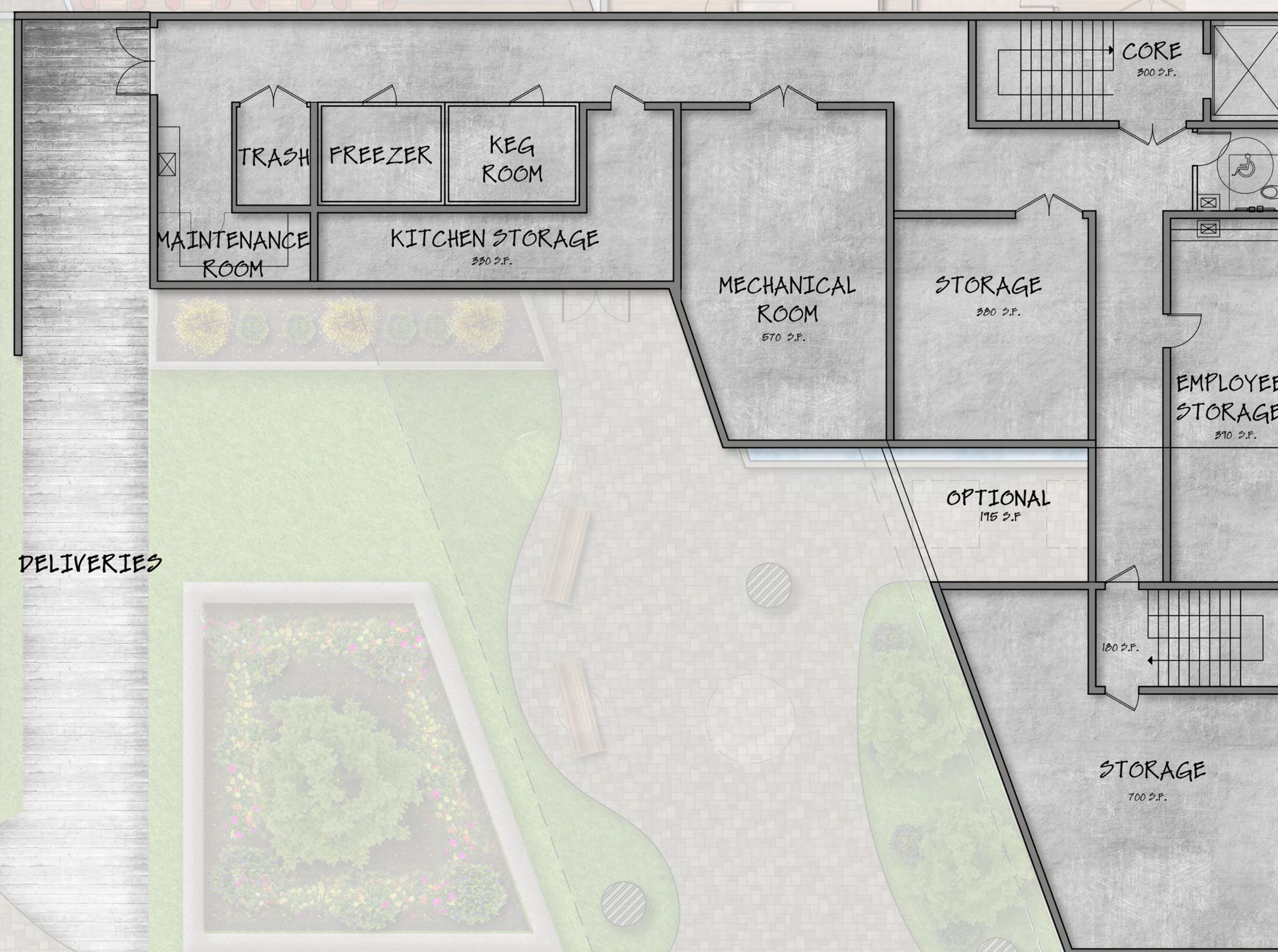
LOWER LEVEL: 4,370 S.F.

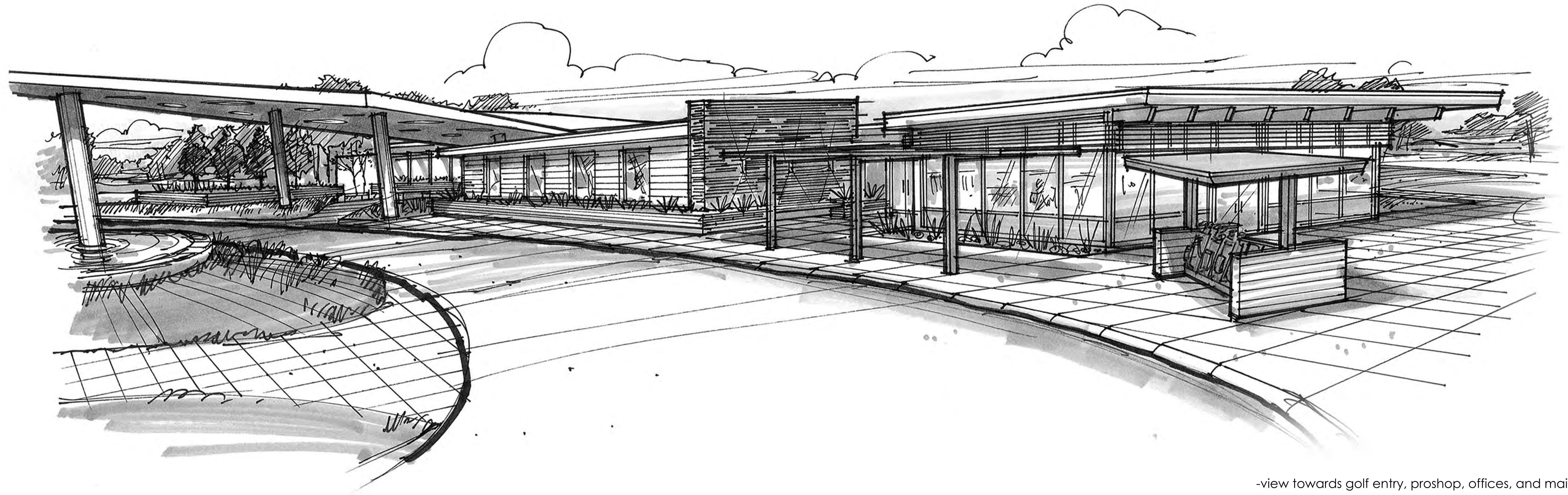
TOTAL: 17,160 S.F.

UPPER LEVEL: 12,790 S.F.

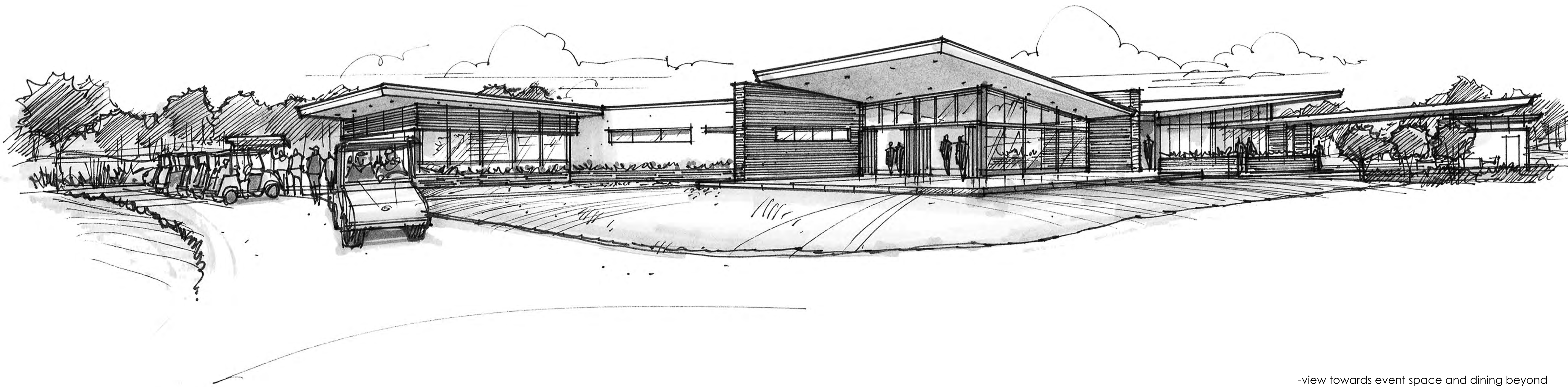
LOWER LEVEL: 4,565 S.F.
(OPTIONAL)

TOTAL: 17,355 S.F.



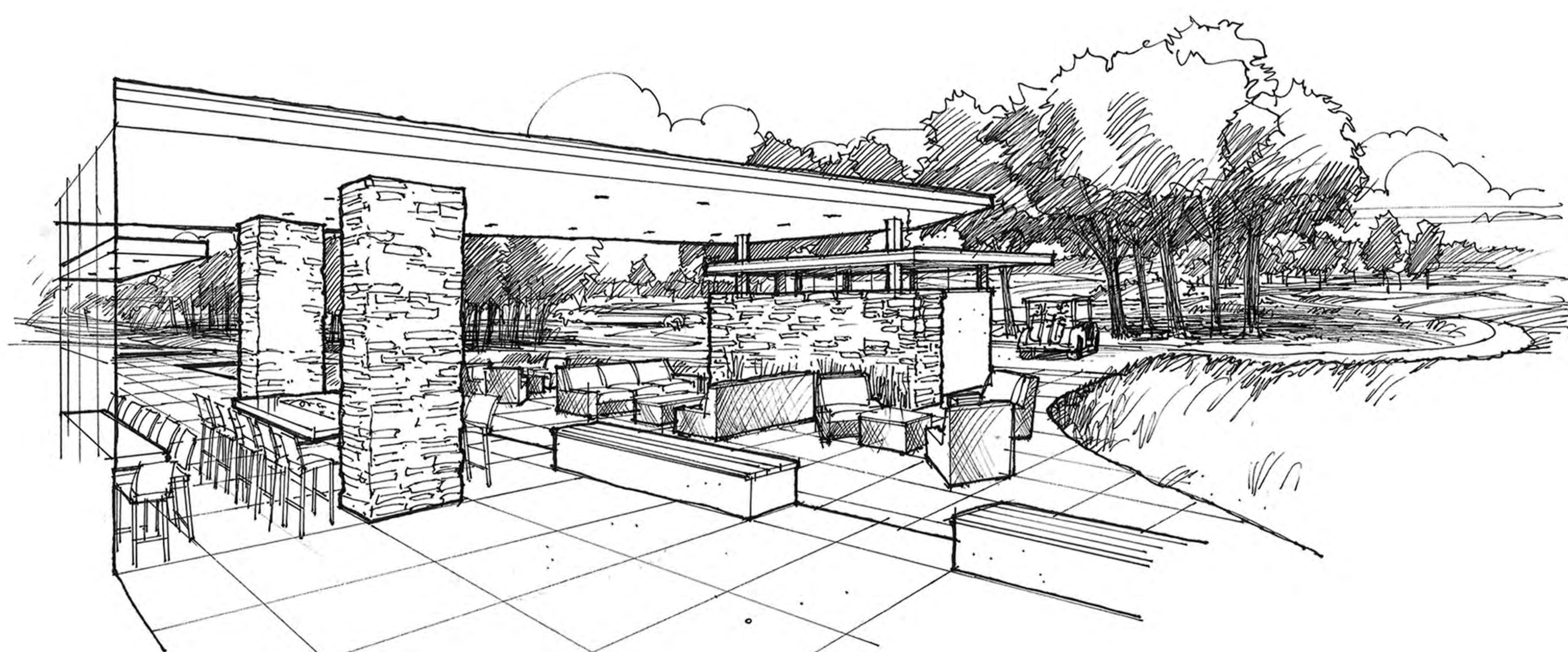


-view towards golf entry, proshop, offices, and main entry beyond

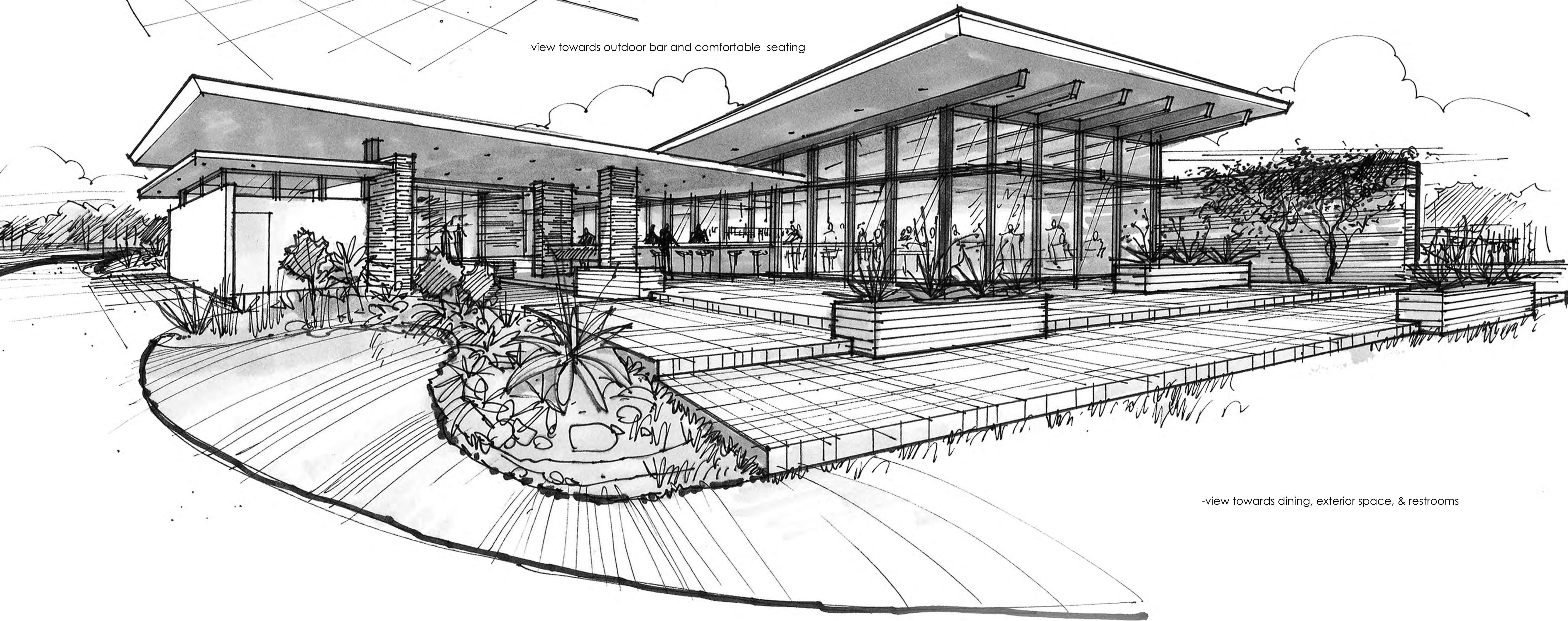


-view towards event space and dining beyond





-view towards outdoor bar and comfortable seating



-view towards dining, exterior space, & restrooms

