



Forest Preserve District of
DuPage County

Blackwell, Greene Valley and
Waterfall Glen Preserve Master
Plans

Discovery and Analysis Summary





Team



**Forest Preserve District
of DuPage County**





Team



David Powers
Account Manager



Todd Meyer
Principal Landscape Architect
/ Lead Planner



Sarah McDonald
Senior Landscape Architect
/ Project Manager



Josh Arrigoni
Ecological Planning / Design /
Implementation



Tom Leighton
Financial Feasibility / Market
Analysis



Team



David Powers
Account Manager



Todd Meyer
Principal Landscape Architect
/ Lead Planner



Sarah McDonald
Senior Landscape Architect
/ Project Manager



Josh Arrigoni
Ecological Planning / Design /
Implementation



Tom Leighton
Financial Feasibility / Market
Analysis



Brian Jennett
Financial Feasibility / Market
Analysis



Lauren Walburg
Financial Feasibility / Market
Analysis



Ginny Young
Planning & Stakeholder
Engagement



Rashad Tiam Watt
Planning & Stakeholder
Engagement



Agenda

Introduction

Discovery and Analysis

- Document Review

- Existing Conditions

- Market Analysis Overview

- Public Engagement Overview

- Greene Valley

- Blackwell

- Waterfall Glen

Next Steps

Questions



Blackwell, Greene Valley and Waterfall Glen Forest Preserve Master Plans

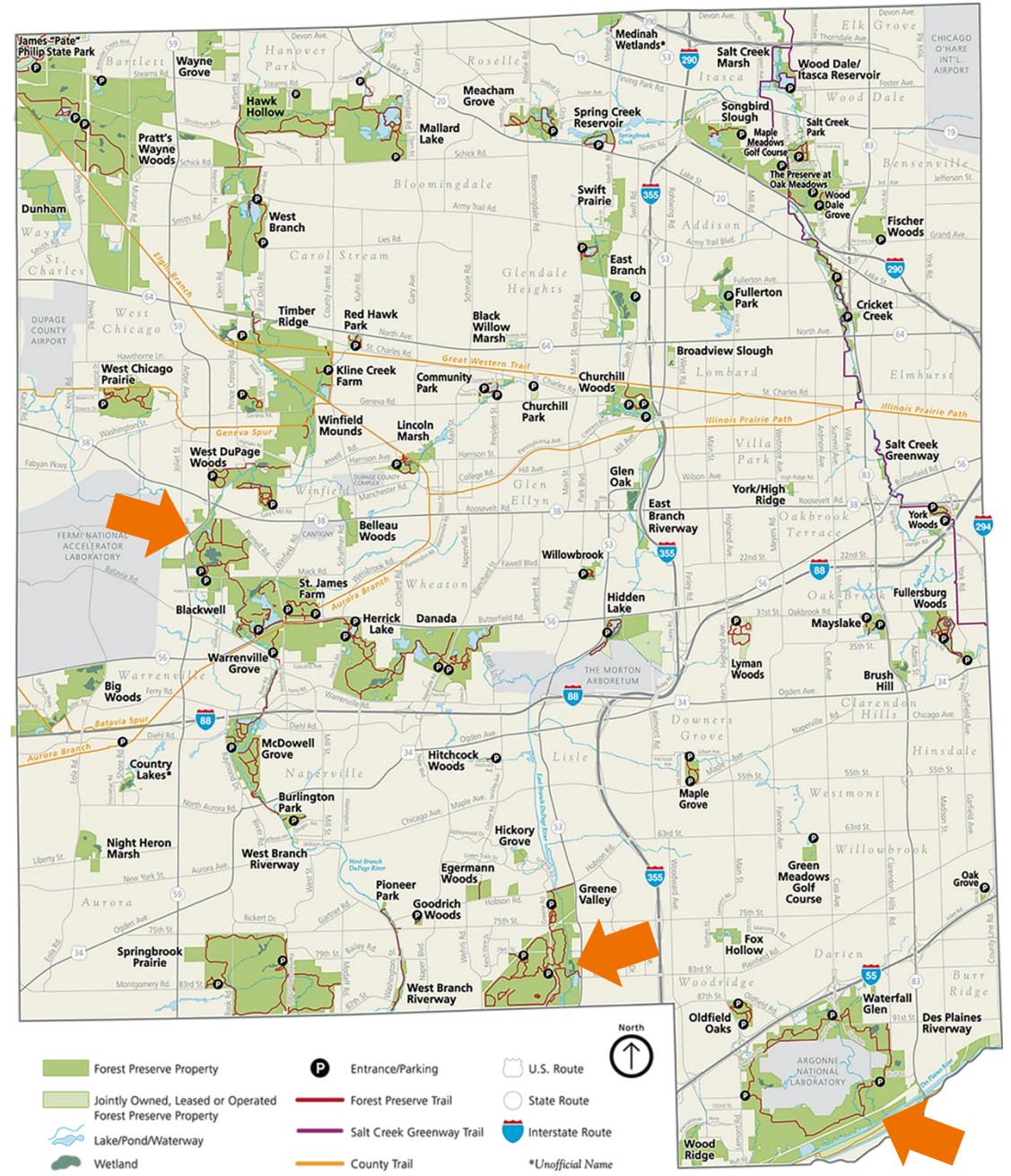
Why Master Plan?



Location



Forest Preserve District of DuPage County





Blackwell, Greene Valley and Waterfall Glen Forest Preserve Master Plans

Discovery and Analysis



Document Review

- Previous Plan and Studies Review (building off previous plans and recommendations)
 - Strategic Plan
 - 2019 Master Plan
 - 1992 Master Plan
- Blackwell
 - Blackwell Trail Concept
 - Blackwell Egret Trail Reroute
 - Mack Road Connector
 - WBDRT - Roosevelt
- Greene Valley
 - TENG Greene Farm Barn Renovation-Reuse Report
 - Greene Farm Barn Recommendation 2019
- Waterfall Glen
 - Parking Analysis and Opportunities
- Current projects underway
- Policy Review



Blackwell

Existing Conditions

- Data collection - natural resources, visitation/use data
- Site visits/walk/drive-thru
- Georeferenced data collection
- Interviews with staff
- Confirmation of existing conditions
- Identifying issues/opportunities



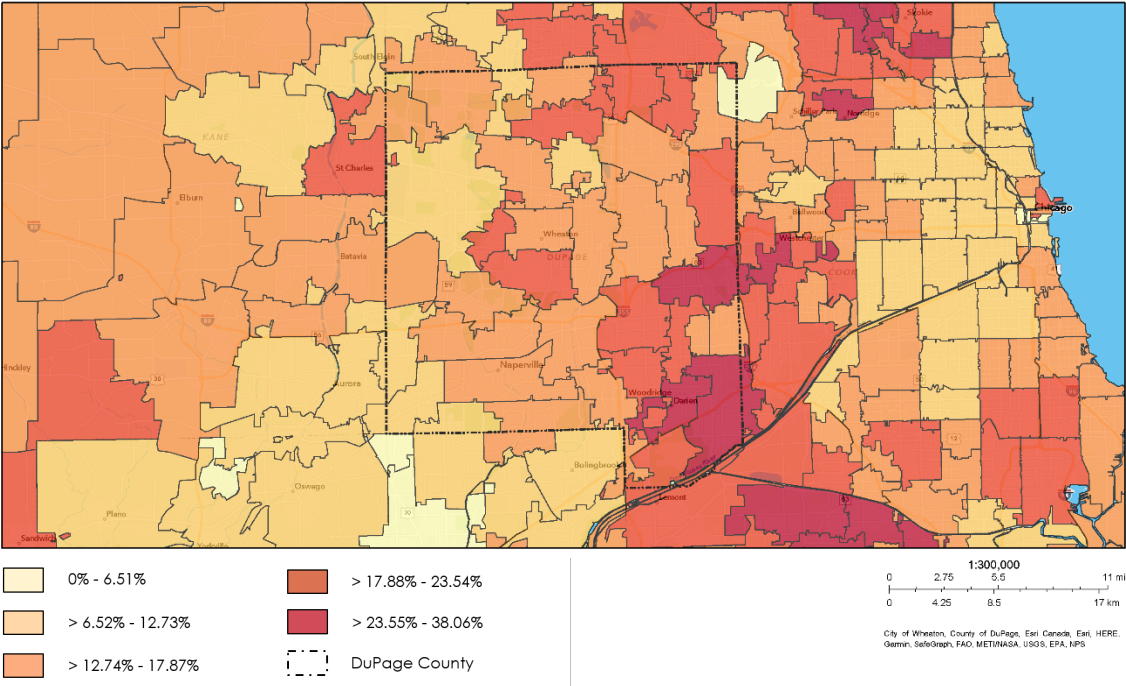
Market Analysis

- Demographics
- Peer Benchmarking
- Competitive context for Blackwell Programs
- Program Gaps
- Greene Farm Barn

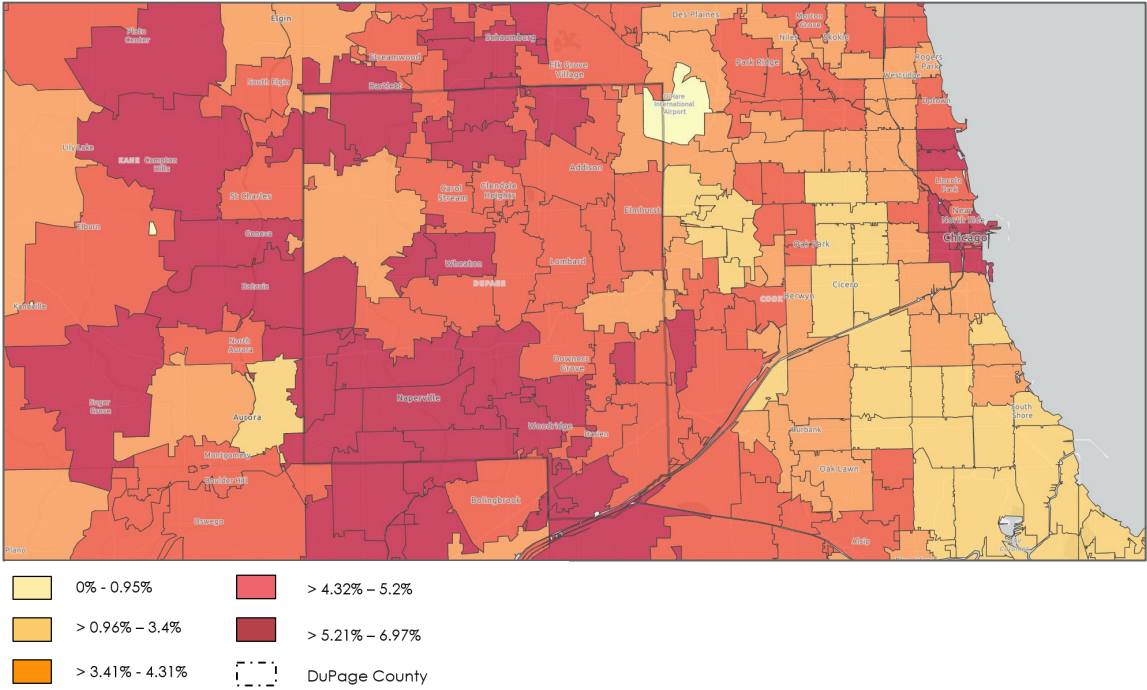


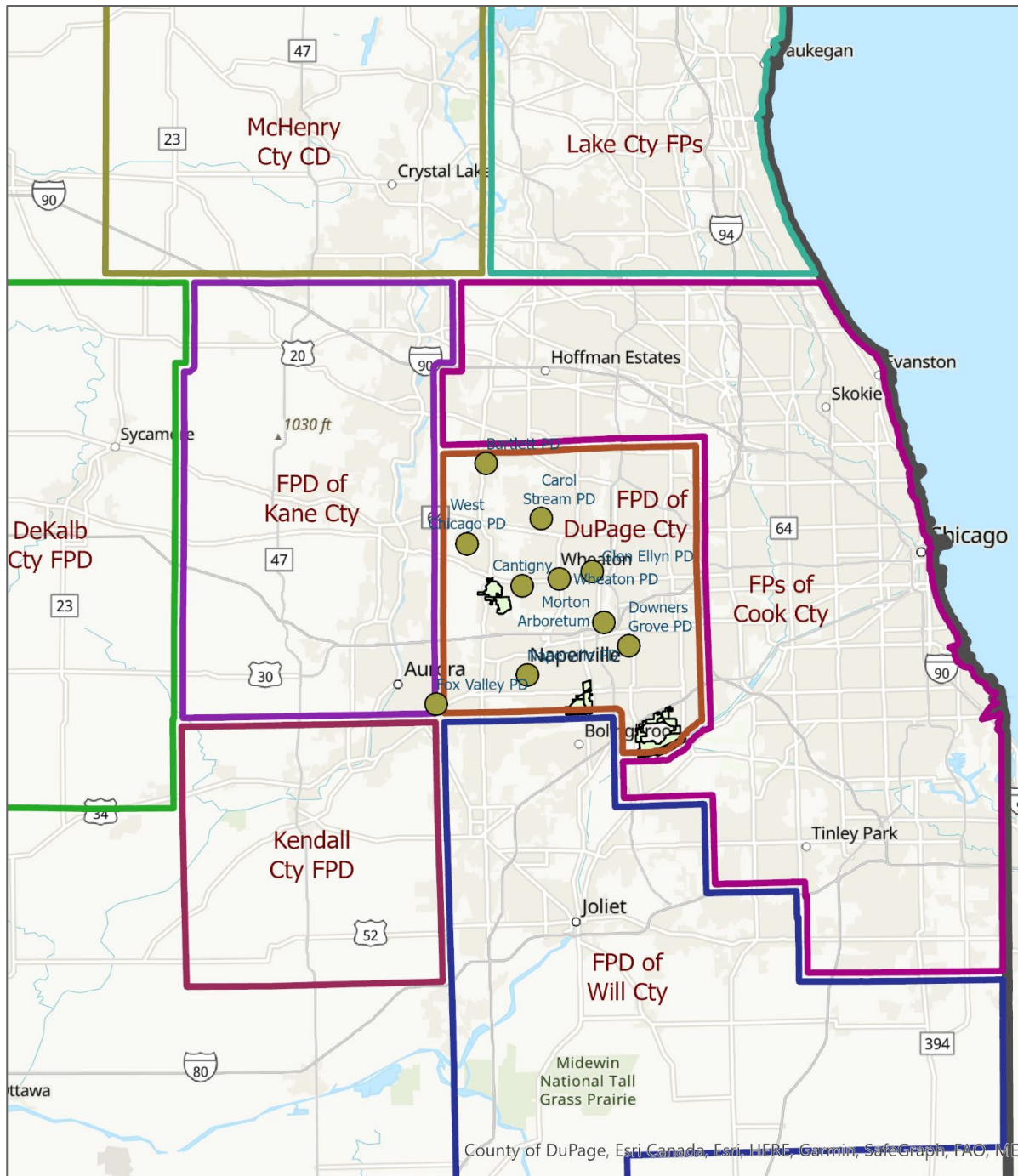
Demographics

% Seniors (Ages 65+)



% Participated in Cycling





Peer Benchmarking

Key Findings

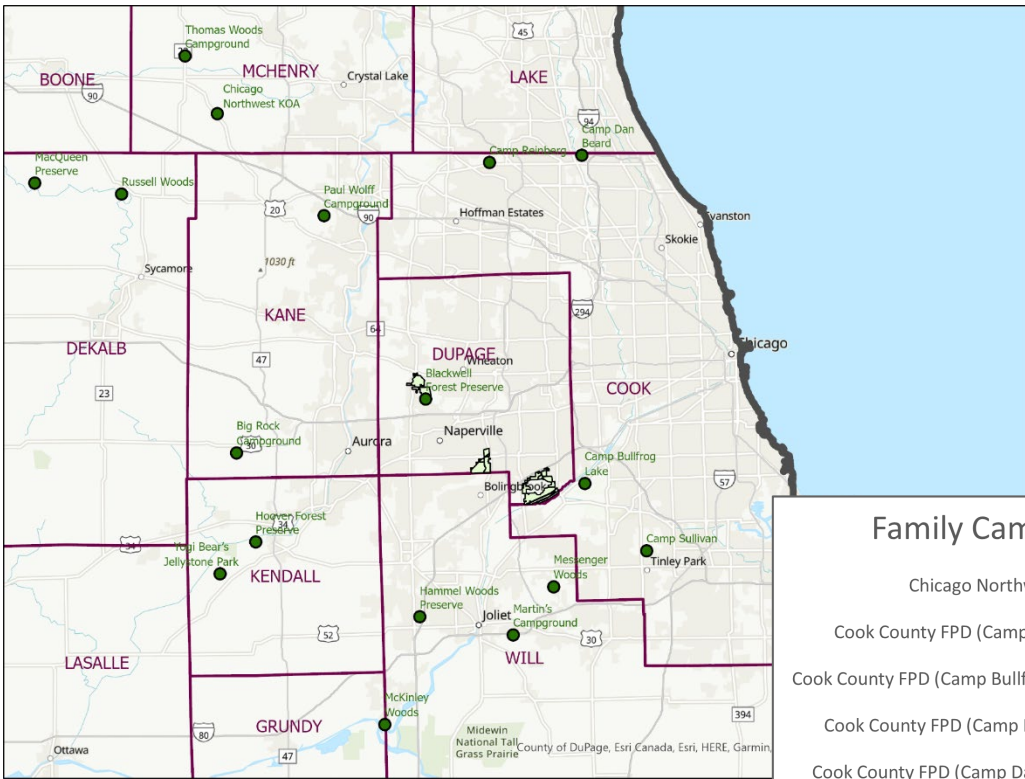
FPD DuPage has one of the most comprehensive set of program offerings

The programs it offers that are somewhat unusual are:

- Boat/paddling rental
- Archery
- Canopy/grill rental
- Snow tubing
- Model aircraft
- Orienteering course

Potential gaps include:

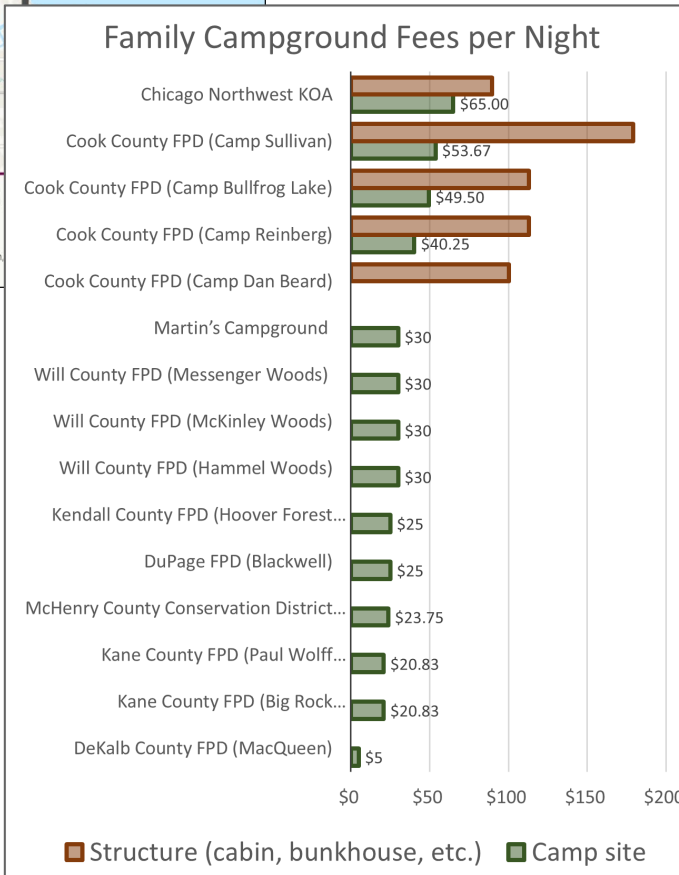
- Food/beverage Offerings



Competitive context for Blackwell Programs

For seven identified programs at Blackwell:

- Investigated locations of comparable programs
- Developed information about fees and key program parameters
- Called out interesting ideas and features from other locations



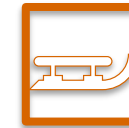
Off-leash
Dog Park



Family
Camping



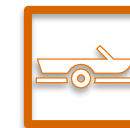
Youth-Group
Camping



Snow Tubing



Snowshoe
Rental



Boat Rental



Archery

BIKE SHARE

Grayslake Community Park District

Grayslake Bike Share




TOGETHER WE RIDE GRAYSLAKE

Grayslake Bike Share is a network of 5 locations across Grayslake providing low-cost, flexible alternative transportation to commute and explore all that the Grayslake community has to offer. College of Lake County, Grayslake Area Public Library District, Grayslake Park District, and Village of Grayslake are committed to the health and wellness of all visitors and residents. Please explore our 20+ miles of trails with access to the village center, the parks, the library, and the schools. Together We #RideGrayslake.

#RideGrayslake



Your First Ride

STEP 1 | Download the Koloni app in the app store!
STEP 2 | Create an account with your phone # or email.
STEP 3 | Find a location where the orange bikes are parked.
STEP 4 | Scan the QR code or enter the bike ID #.
STEP 5 | Lock is now unlocked and enjoy your ride.

Return the Bike

STEP 1 | Find a parking location in the app and return.
STEP 2 | Select "end rental" + push the lever down to lock.
STEP 3 | Take a photo of the bike to ensure proper parking.
STEP 4 | Share your referral code with friends for free rides!

Sponsors






FAQ

What payment methods do you have?
 We currently support any debit/credit cards and Venmo.

What does it mean to "Pause" my rental?
 You are able to lock your bike so that it is secure (i.e. while running an errand).

How do I report an issue?
 From the main menu, select "Report". Please fill in all the fields and take photos.

How do I refer a friend?
 In the main menu, click "refer n' earn". Either copy or share your code with friends.

How do I rent multiple bikes at a time?
 In the Koloni app after you have rented your first bike hit the add rental button at the top.

I was charged a penalty and I don't know why.
 You may have received a penalty for ending your rental outside of a geofenced or dropzone location.

Koloni Customer Support Number (850) 930-9062

Program Gaps

FOOD

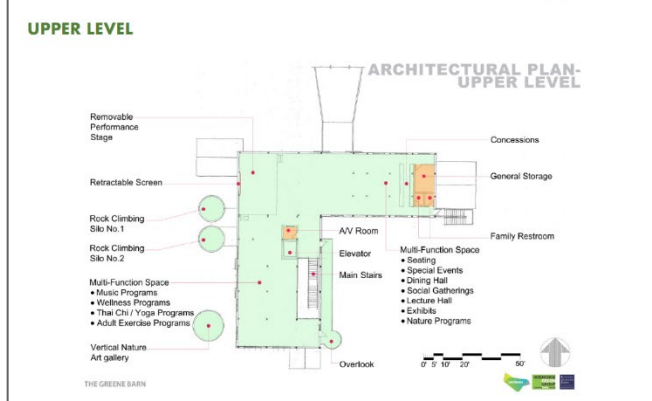
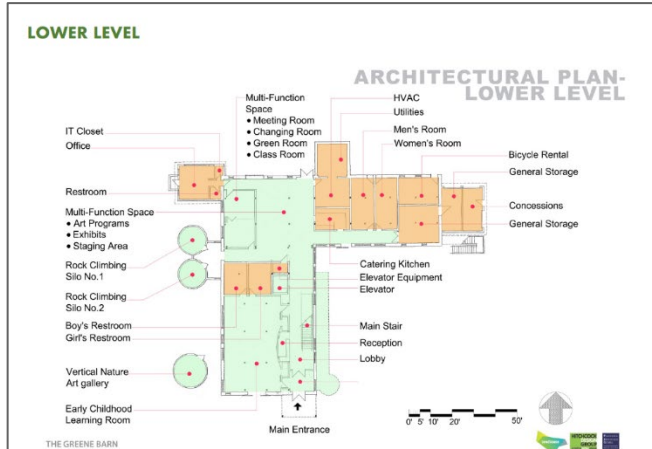
Lake County FPD

The Café at Independence Grove





VISION



EXPLORATION

Hoosier Grove Barn



Byron Colby Barn



Greene Farm Barn

BUSINESS / RETURN ON INVESTMENT ANALYSIS

Key Findings

- There are successful, interesting, comparable event centers.
- In a rehabilitated condition, the GF Barn would be attractive and generate cash flow as an event center
- Rents to FPD DuPage are unlikely to fund the cost of rehabilitation in a reasonable payback period.

Deeper exploration is warranted* of:

- Business model alternatives
- Capital funding strategies

*if the use is considered mission consistent, and there is clear community support for an economic use of the Barn



Discovery and Analysis

Public Engagement Overview



- Public Survey
- Targeted Surveys
 - Agencies
 - Scout Group
 - Accessibility Group
- Virtual Public Engagement Session
- Focus Groups (Volunteers, Preserve Users, Seniors)
- Commissioner 2x2 Interviews
- Staff Department Groups (Community Engagement Services, Resource Management and Development, Natural Resources and Grounds)



Public Engagement

Virtual Meetings

Tools Uses:

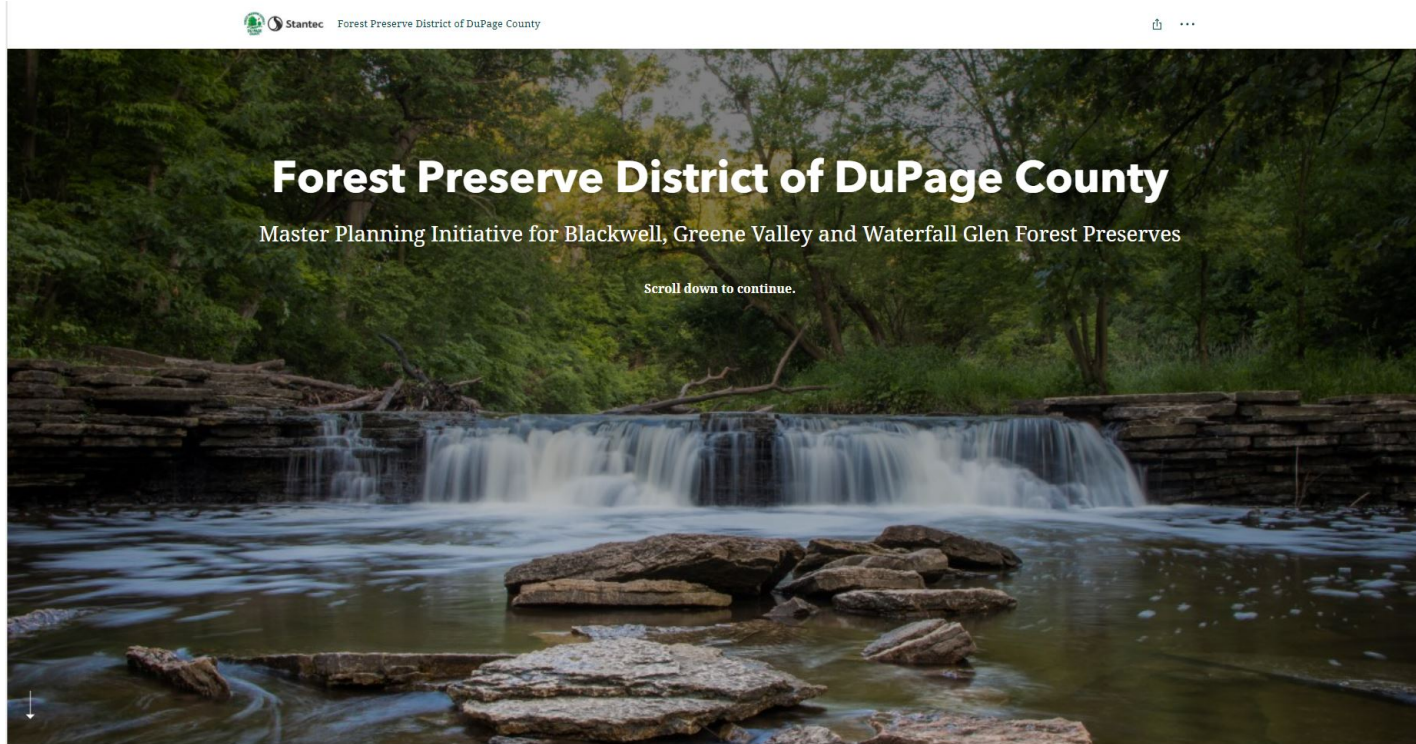
- Zoom/ Teams
- Online Survey
- StoryMap
- Mural



Engagement Statistics

	Views/Respondents/Attendees
StoryMap Views	2,141 (~35.10 per day)
Public Surveys	602
Agency Surveys	13/18
Scout Group Surveys	8/8
Accessibility Group Survey	8/8
Staff Engagement	25
Public Engagement	103
Focus Group	50
Board Commissioners	7

	Attended
Greene Farm Barn Ad Hoc Committee	15
Senior Focus Group Mayslake	13
Senior Focus Group St. James Farm	9
Volunteer Focus Group	14
Preserve Users Focus Group	9
District Staff Community Engagement	8
District Staff Resource Management and Development	9
District Staff Natural Resources and Grounds	8
Public Engagement Blackwell	38
Public Engagement Greene Valley	36
Public Engagement Waterfall Glen	29



Public Engagement Tools

Virtual Meetings

Tools Uses:

- Zoom/ Teams
- Online Survey
- **StoryMap**
- Mural



FOREST PRESERVE DISTRICT OF DUPAGE COUNTY

BLACKWELL FOREST PRESERVE

Love, More, Less
What do you love about Blackwell? What do you want more of? What do you want less of?

LOVE (grid of purple squares)
MORE (grid of green squares)
LESS (grid of red squares)

Hidden Gems
What are your favorite places and things to do in the Blackwell?

What Else?
What are your thoughts on the future of Blackwell?

Focus Areas
What are the most important areas to focus on?

- FOCUS AREA 1**
Future bridge over Roosevelt Road
- FOCUS AREA 2**
Off Leash Dog Area
- FOCUS AREA 3**
McKee Marsh Entrance, Facilities Maintenance and Grounds Divisions
- FOCUS AREA 4**
Nursery
- FOCUS AREA 5**
Youth Campground
- FOCUS AREA 6**
Spring Brook and Ranger Office
- FOCUS AREA 7**
Family Campground and North Shelter
- FOCUS AREA 8**
Silver Lake, Parking, South Shelter, Shedd Hill and Boat Launch
- FOCUS AREA 9**
East Picnic Shelter, Connection to Illinois Prairie Path and St. James Farm
- FOCUS AREA 10**
Sand and White Pine Ponds, Parking, Archery Range, and Urban Stream Research Center, Trail to Batavia Road

Public Engagement Tools

Virtual Meetings

Tools Uses:

- Zoom/ Teams
- Online Survey
- StoryMap
- Mural

LOVE

MORE

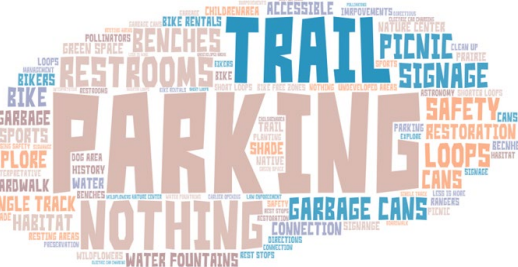
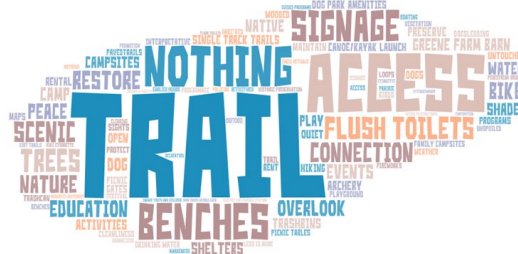
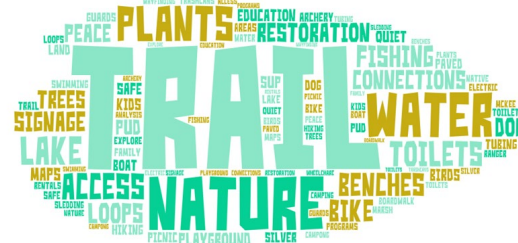
LESS

Public Engagement Findings

Key takeaways

Most people...

- love the preserves the way they are and want modest infrastructure improvements (signage, flush toilets)
- love diverse habitat and wildlife
- want to see more restoration/conservation



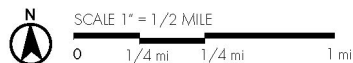


Discovery and Analysis

Greene Valley



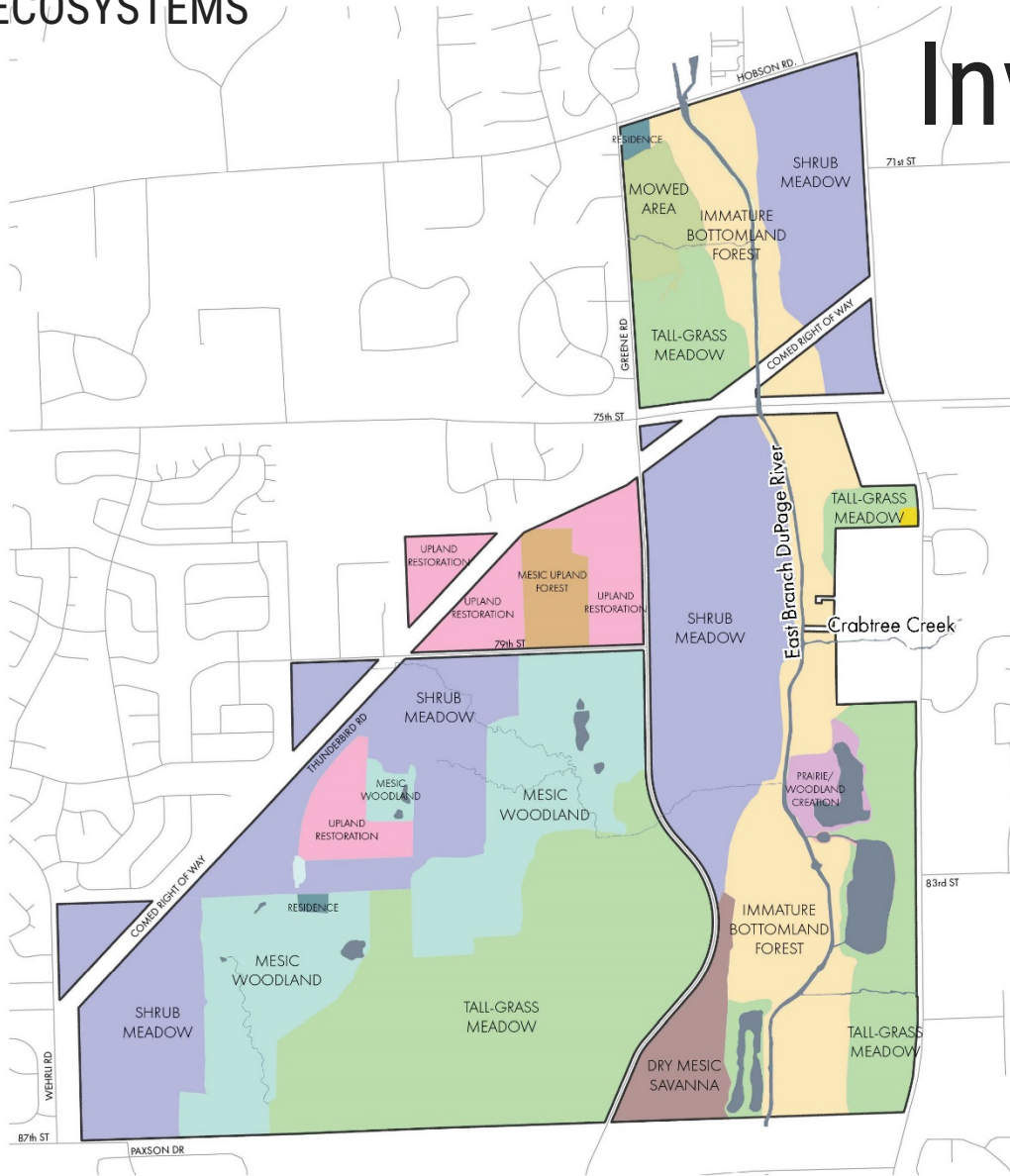
Greene Valley Forest Preserve



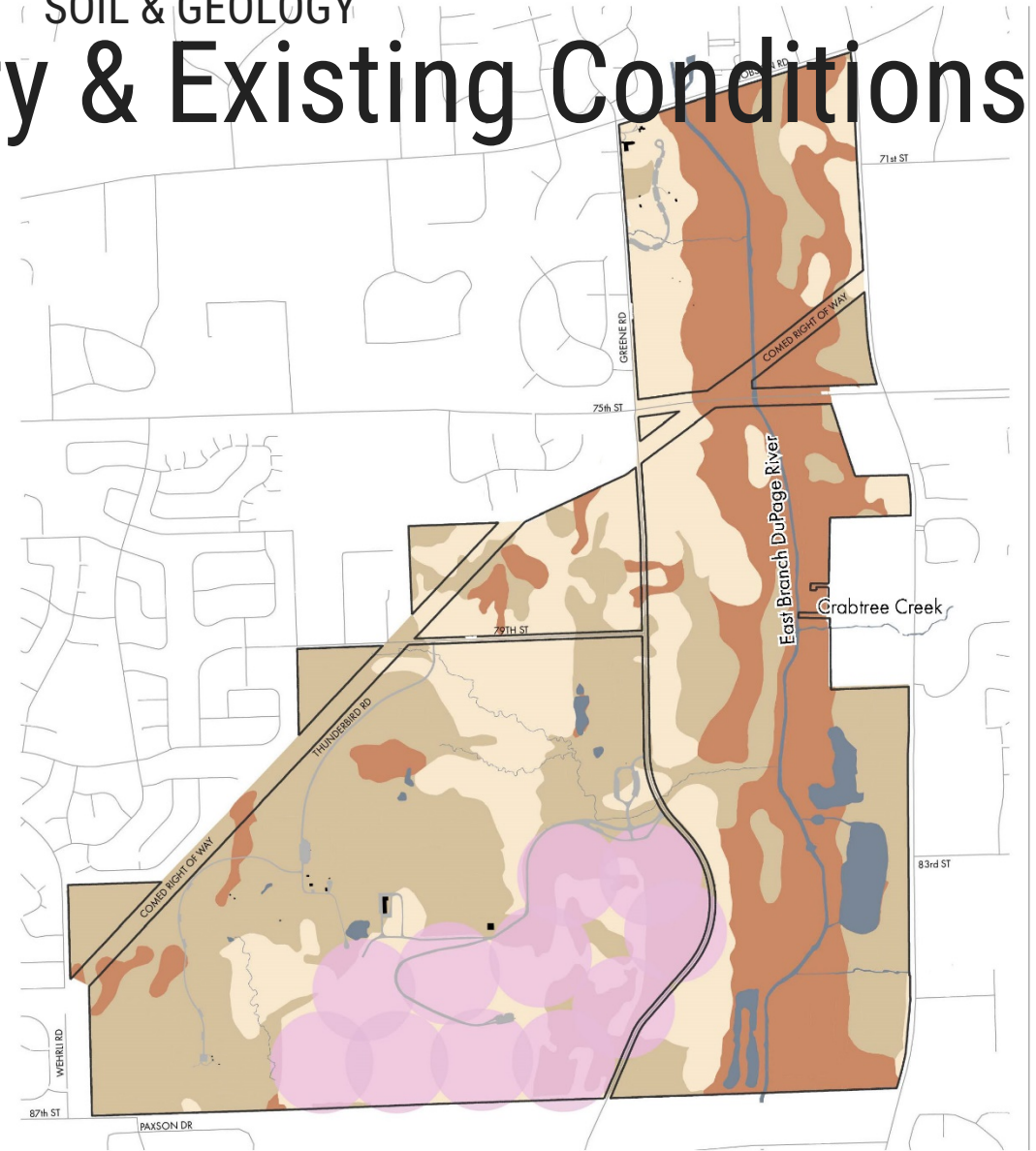
Greene Valley

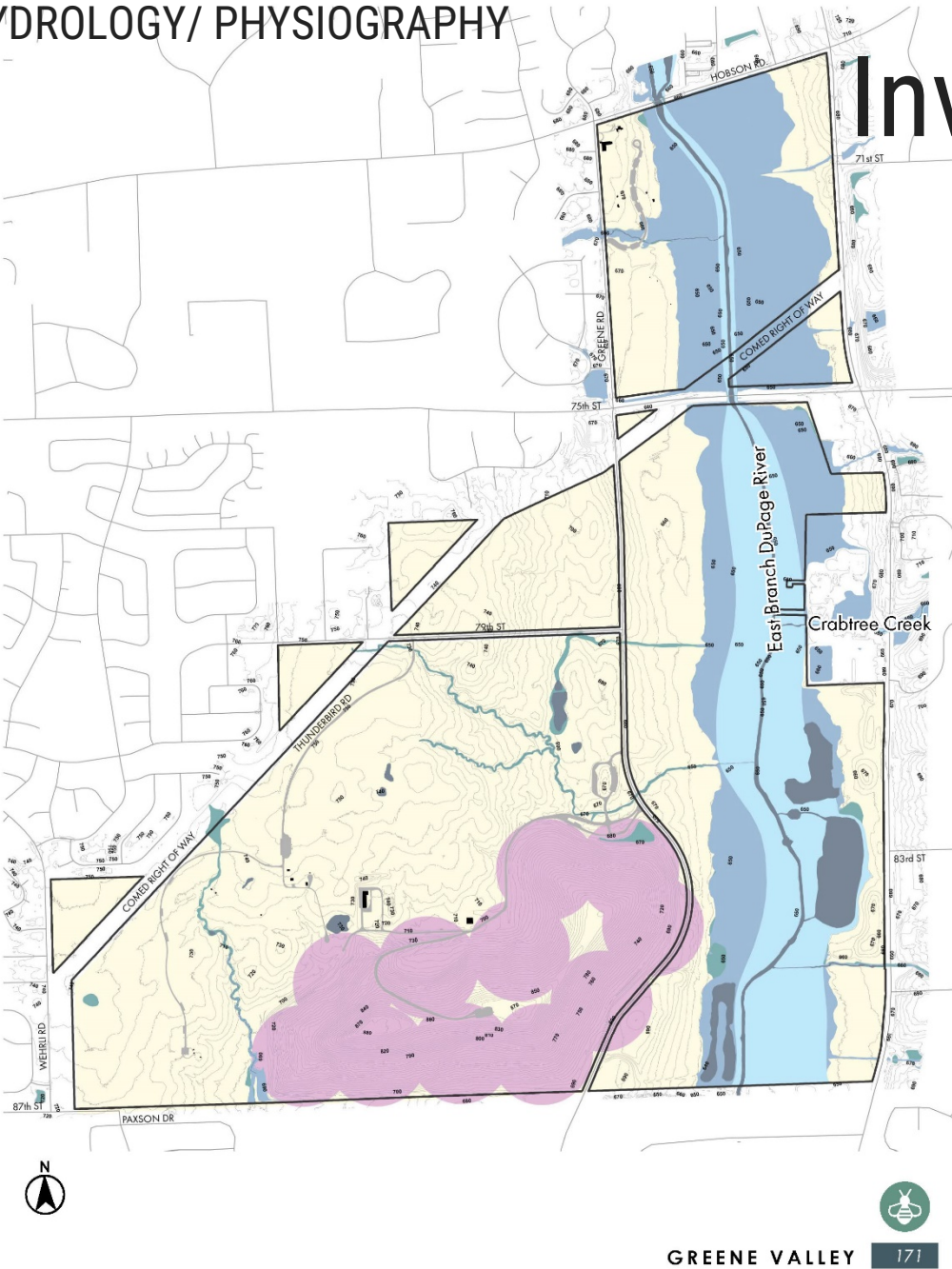
- 1,388-acres
- Naperville, IL
- Home to more than 540 native plant species, making it one of the county's most botanically diverse sites.
- May through October, its 190-foot-tall scenic overlook provides a bird's-eye view of the landscape and the Chicago skyline.
- 12 miles of marked trails, picnic shelters, an off-leash dog area, a model craft area, a youth-group campground and more...





Inventory & Existing Conditions



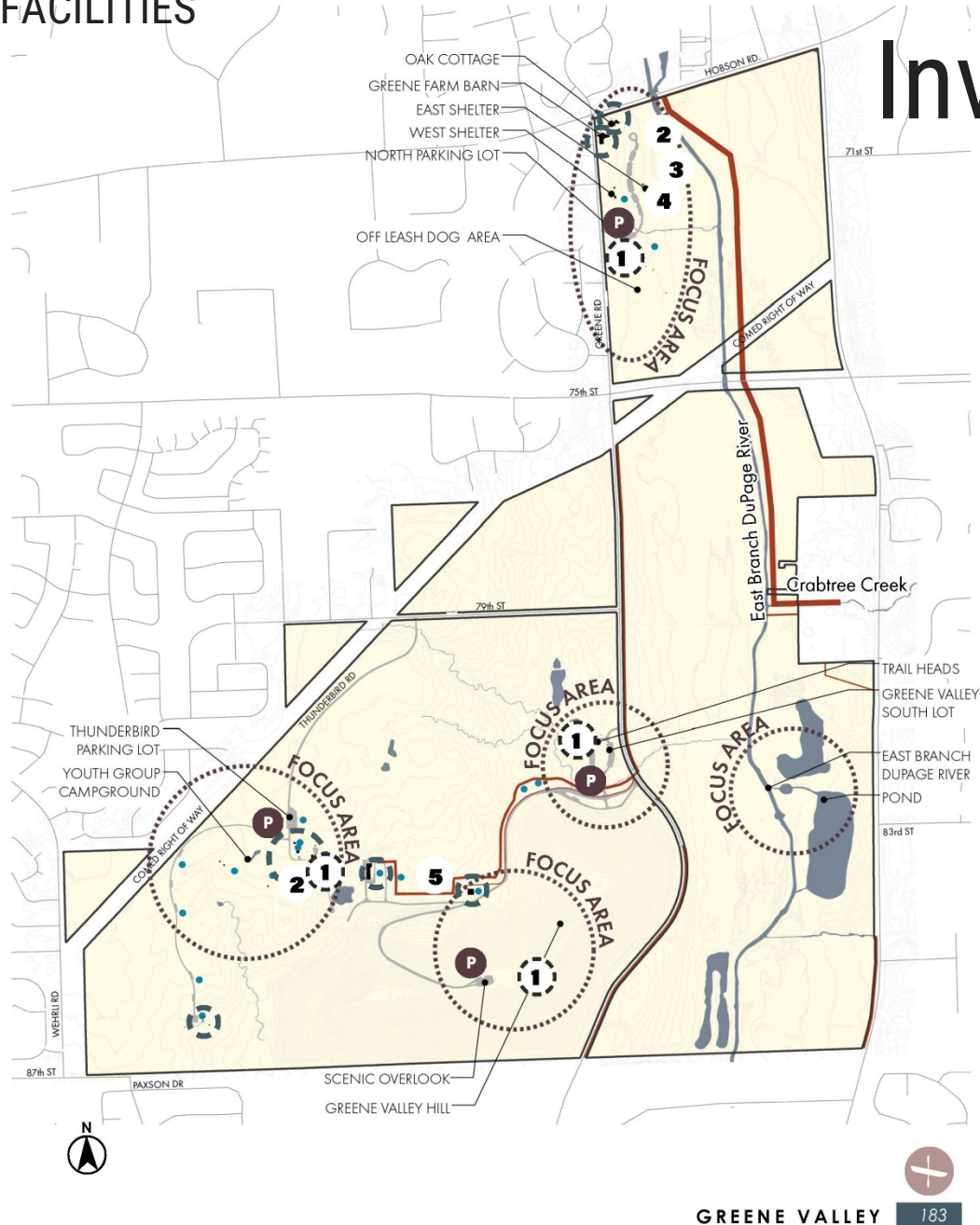


Inventory & Existing Conditions





Inventory & Existing Conditions



Public Engagement

- Survey Question 12
- 220 total respondents
- 196 responded to this question

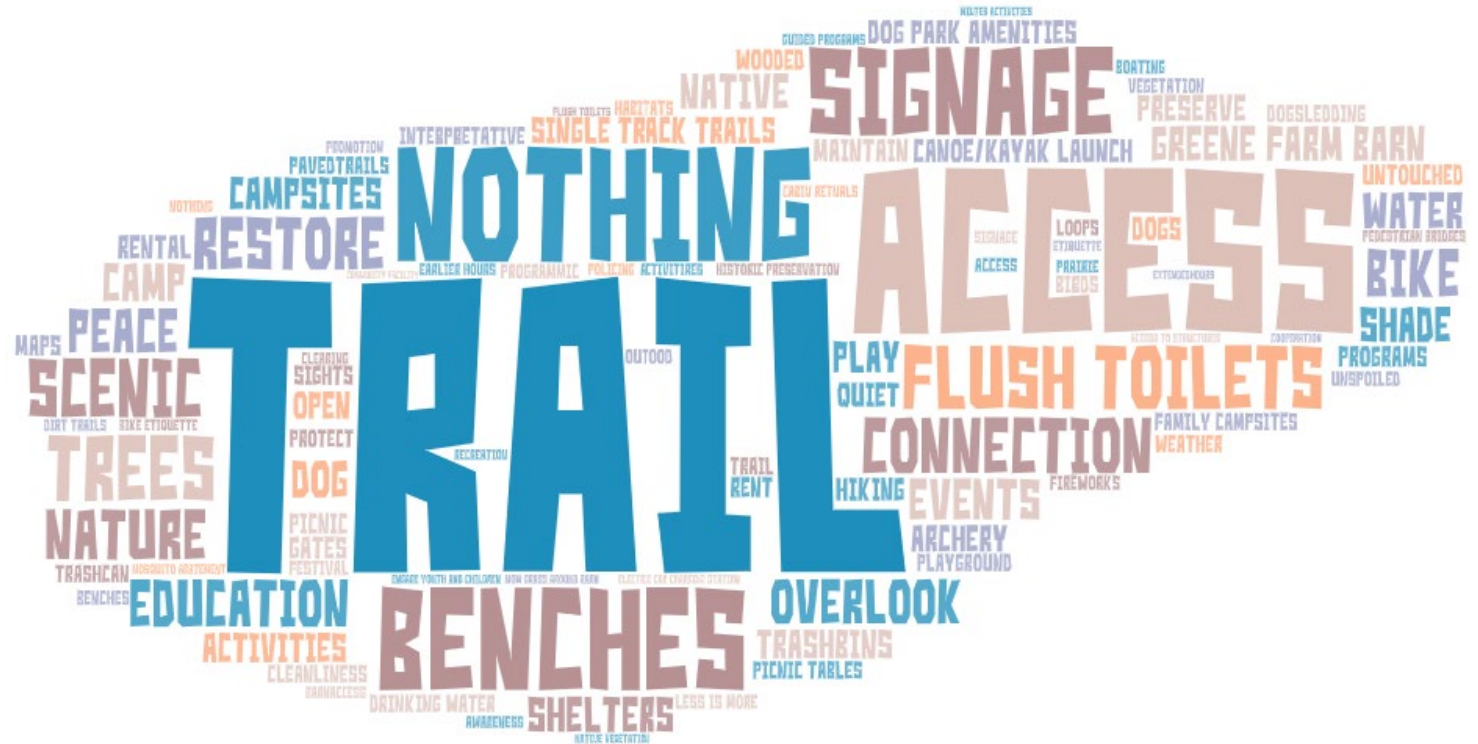
What I love about Greene Valley is...



Public Engagement

- Survey Question 14
- 220 total respondents
- 167 responded to this question

What there should be more of at Greene Valley is...



Public Engagement

- Survey Question 13
- 220 total respondents
- 132 responded to this question

What there should be less of at Greene Valley is...





Public Engagement

Themes and Trends

Key take away:

- Ad hoc committee has a strong desire to move forward with 2019 plan, even if it means implementation is phased
- Most stakeholders are not interested in seeing significant investment in the barn
- Participants would like to see improvements within the trail systems and general improvements such as native plant restoration, adding more trash cans and flush toilets, and improve trail etiquette.
- Would like the hill to be more open



Greene Valley Forest Preserve





4 STRENGTHS, WEAKNESSES OPPORTUNITIES & THREATS ANALYSIS

The purpose of the Strengths, Weaknesses, Opportunities and Threats (SWOT) analysis is to identify areas within the preserve that are optimal for improvements. This exercise also highlights elements and / or programming in Greene Valley that are operating well and should remain as they are.

The SWOT analysis brings together elements and programming from the previous sections within this chapter and combines them with observations and possibilities. The map to the right provides an overview list of items in the SWOT analysis, and the following pages show enlargements of the Focus Areas.

STRENGTHS

- 1 Diverse ecosystems
- 2 Greene Valley Hill / Scenic Overlook - views of Downtown Chicago and surrounding areas
- 3 Variety of trail uses allowed (hiking, biking, cross country ski and horseback)
- 4 Historic Greene Farm Barn and Oak Cottage
- 5 Several looped trail options on the south side of the preserve
- 6 Off-Leash dog area
- 7 Model aircraft area
- 8 North side of Greene Valley is really well maintained
- 9 Youth-group campground

WEAKNESSES

- 1 Lack of looped trail on the north side of the preserve
- 2 Floodplain/floodway
- 3 Preserve is fragmented by 75th street and
- 4 ComEd Right of Way
- 5 Vehicle speeds and Quarry truck traffic on I-53
- 6 Unsightly gas powerplant that will be there for the foreseeable future
- 7 Confusing vehicular circulation/duplicative drives at the Horse Trailer Parking lot off of

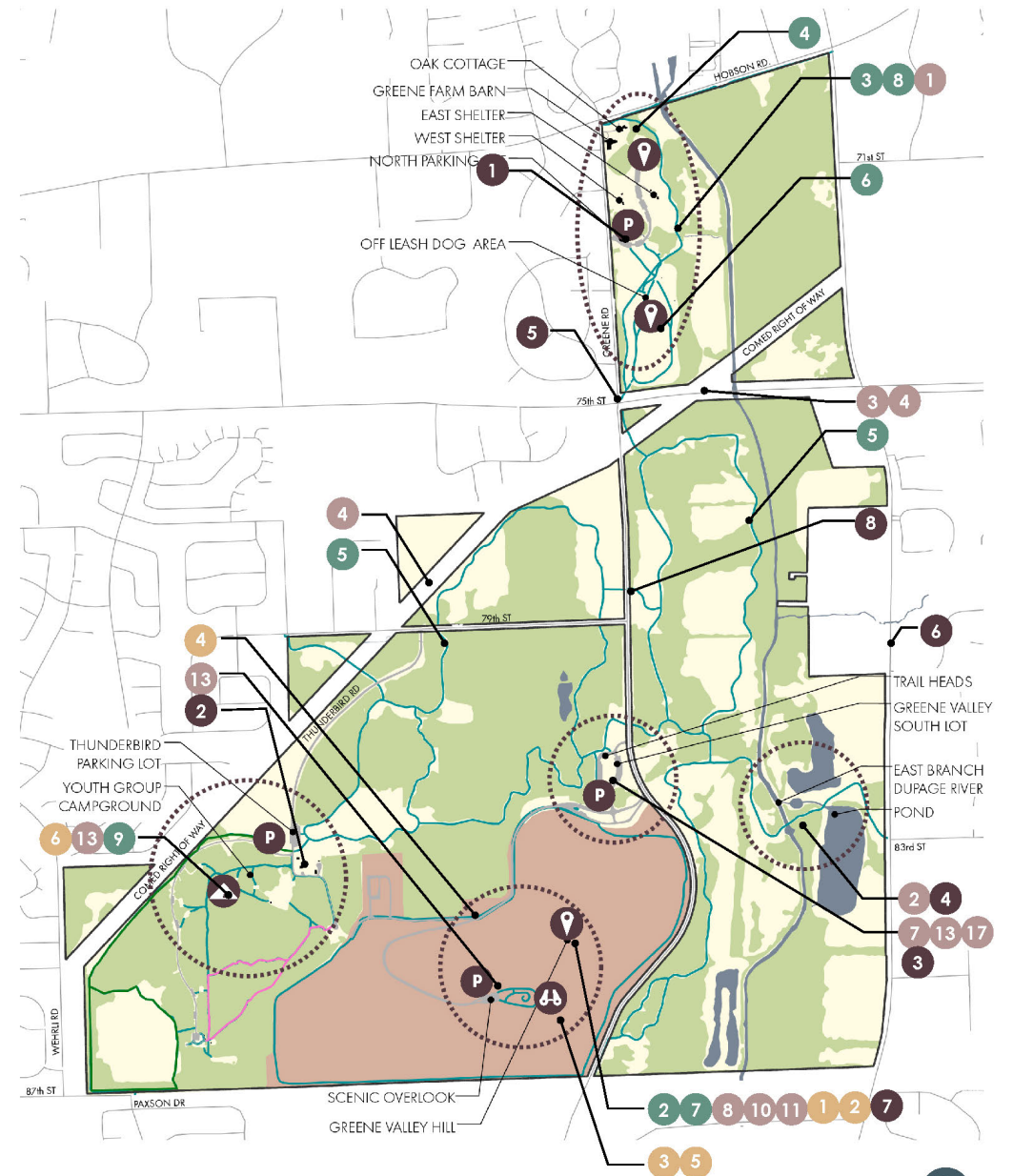
- 8 Greene Road
- 8 Limits on what can be done to the landfill
- 9 Disjointed vehicular access
- 10 Limited hours for use of the Greene Valley Hill/ Scenic Overlook (11am-6pm Saturdays and Sundays only May through October)
- 12 Invasive species in the high quality woodlands by youth campgrounds
- 13 Latrines vs. flush toilets
- 14 Lack of drinking water sources

OPPORTUNITIES

- 1 Greene Valley Hill/ Scenic Overlook Improvements (seating, shade etc.)
- 2 Extended use of the Greene Valley Hill/ Scenic Overlook, including programming activities
- 3 Relocating the Natural Resource Management Program Support Building use to Greene Valley from Waterfall Glen here will tuck this use back into a lower-visibility area.
- 5 Extended hours/access to Greene Valley Hill/ Scenic Overlook
- 6 Extending the camping offerings at Greene Valley to families/other large groups (corporate or large family campouts)

THREATS

- 1 Parking lot access off Greene Road has poor sight lines.
- 2 Guard house is getting old and a decision may be needed to be made about renovation/ removal
- 3 Parking lot is prone to "smash and grabs" to parked vehicles
- 4 Floodplain/floodway
- 5 Traffic/vehicles traveling on Greene Road, 75th Street
- 6 Truck traffic on IL-53
- 7 Landfill: erosion, settling, long term landfill gas and leachate management issues
- 8 Trail crossing on Green Road north of 79th Street





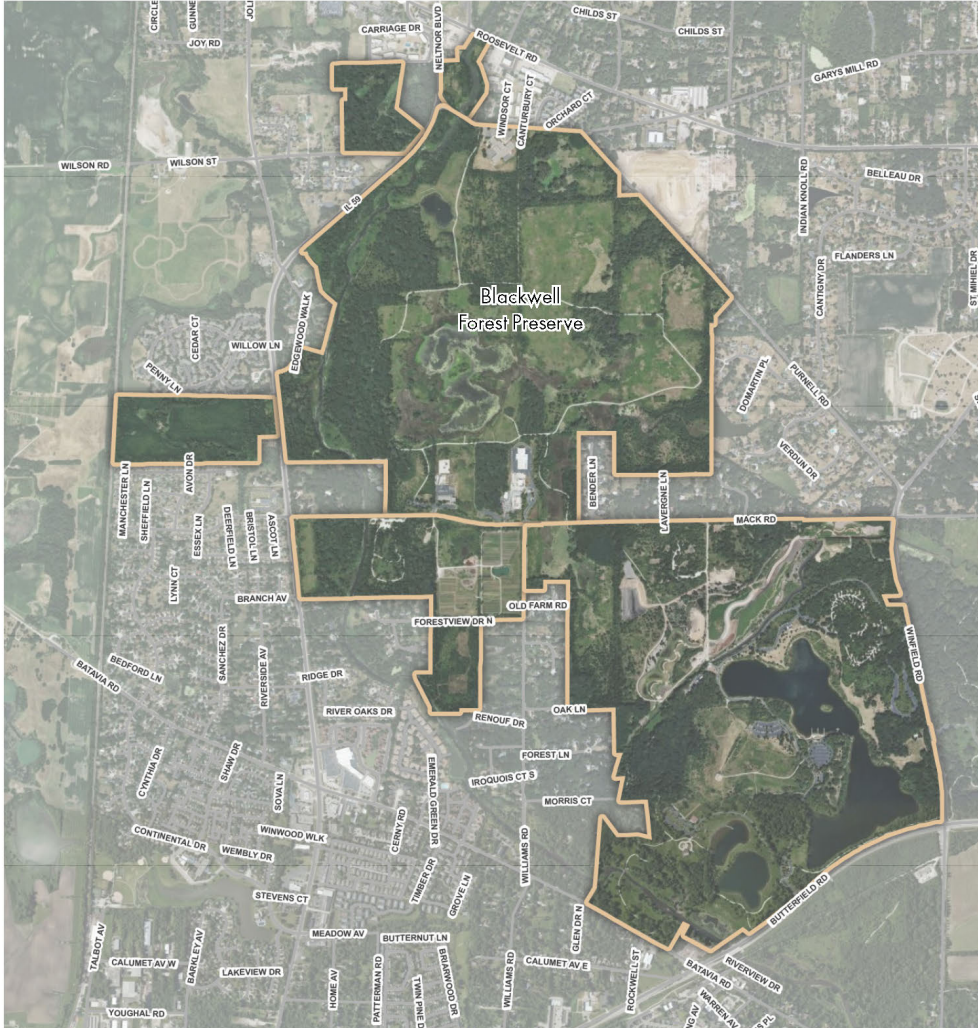
Key Takeaways

- Improved connectivity
- Improve access to the dog park
- Additional access to the Greene Valley
- Improved trail crossings across major roadways to neighborhoods
- Modernized facilities
- Celebration of cultural history
- Consideration for family camping at the youth campground
- South parking lot/landfill access reconfiguration
- Restoration



Discovery and Analysis

Blackwell

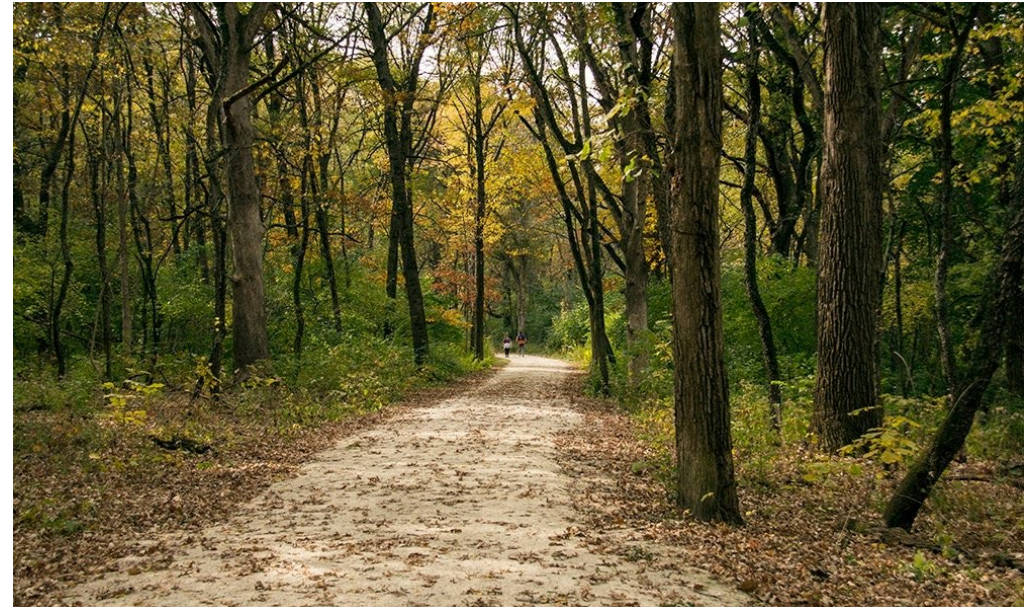


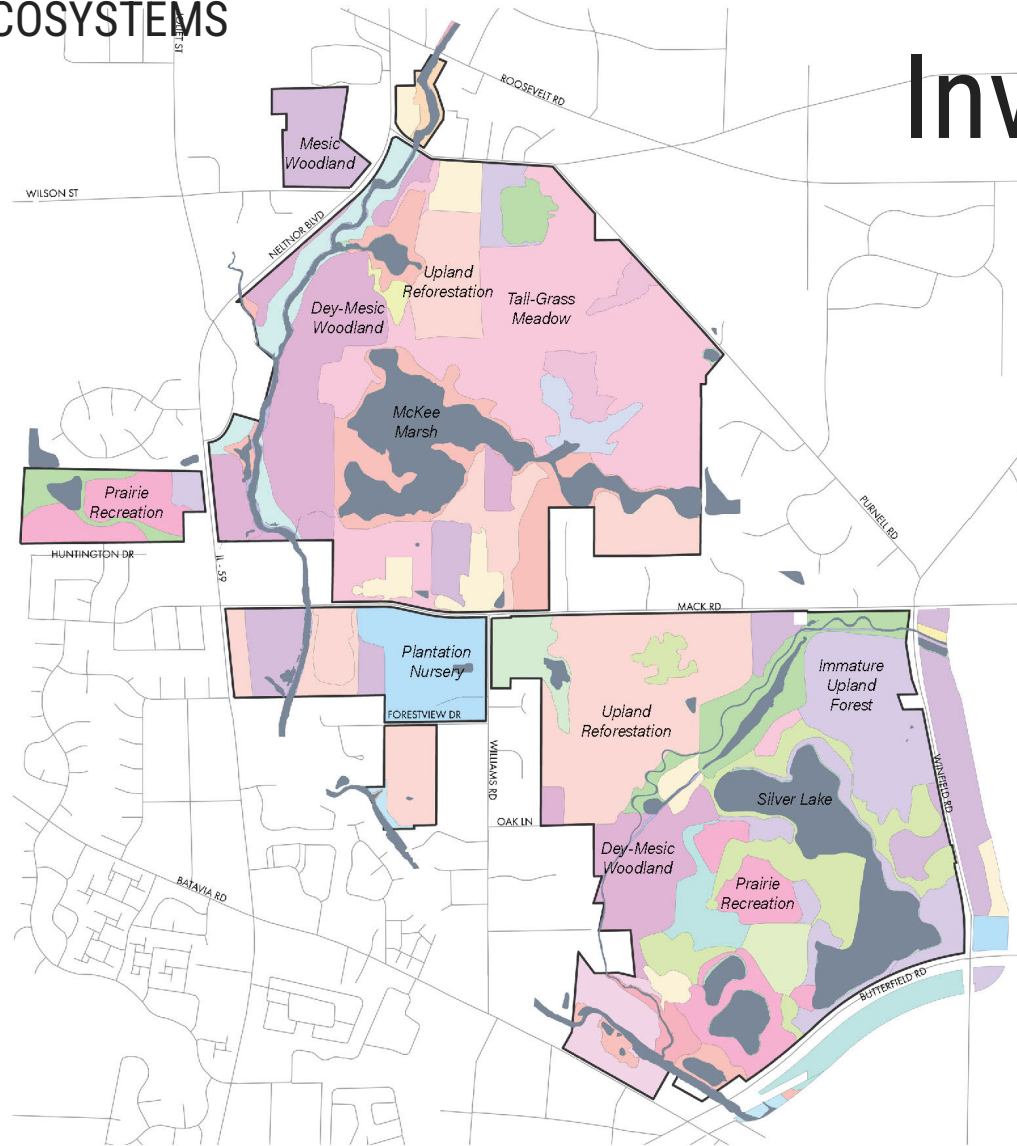
Blackwell Forest Preserve



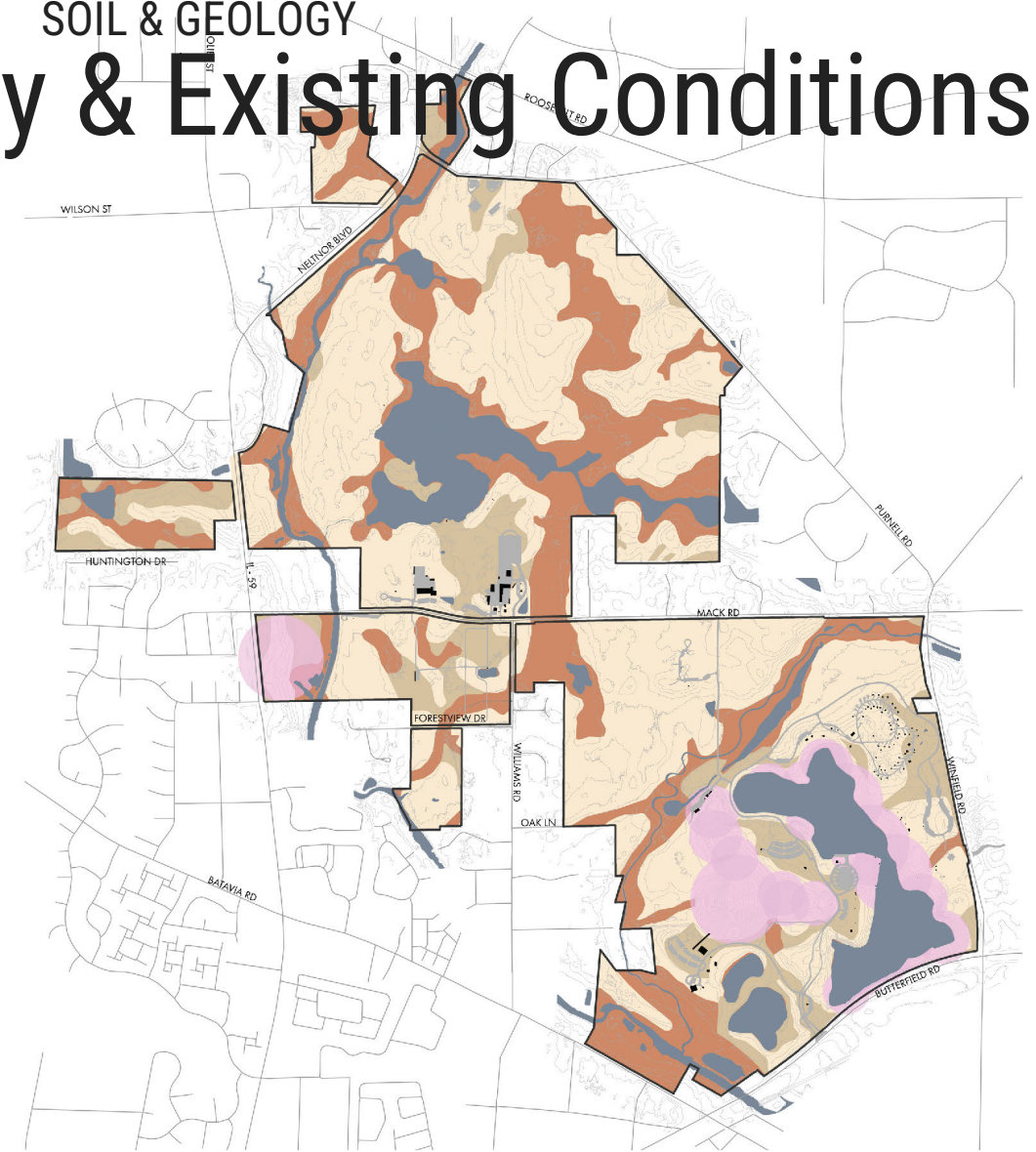
Blackwell

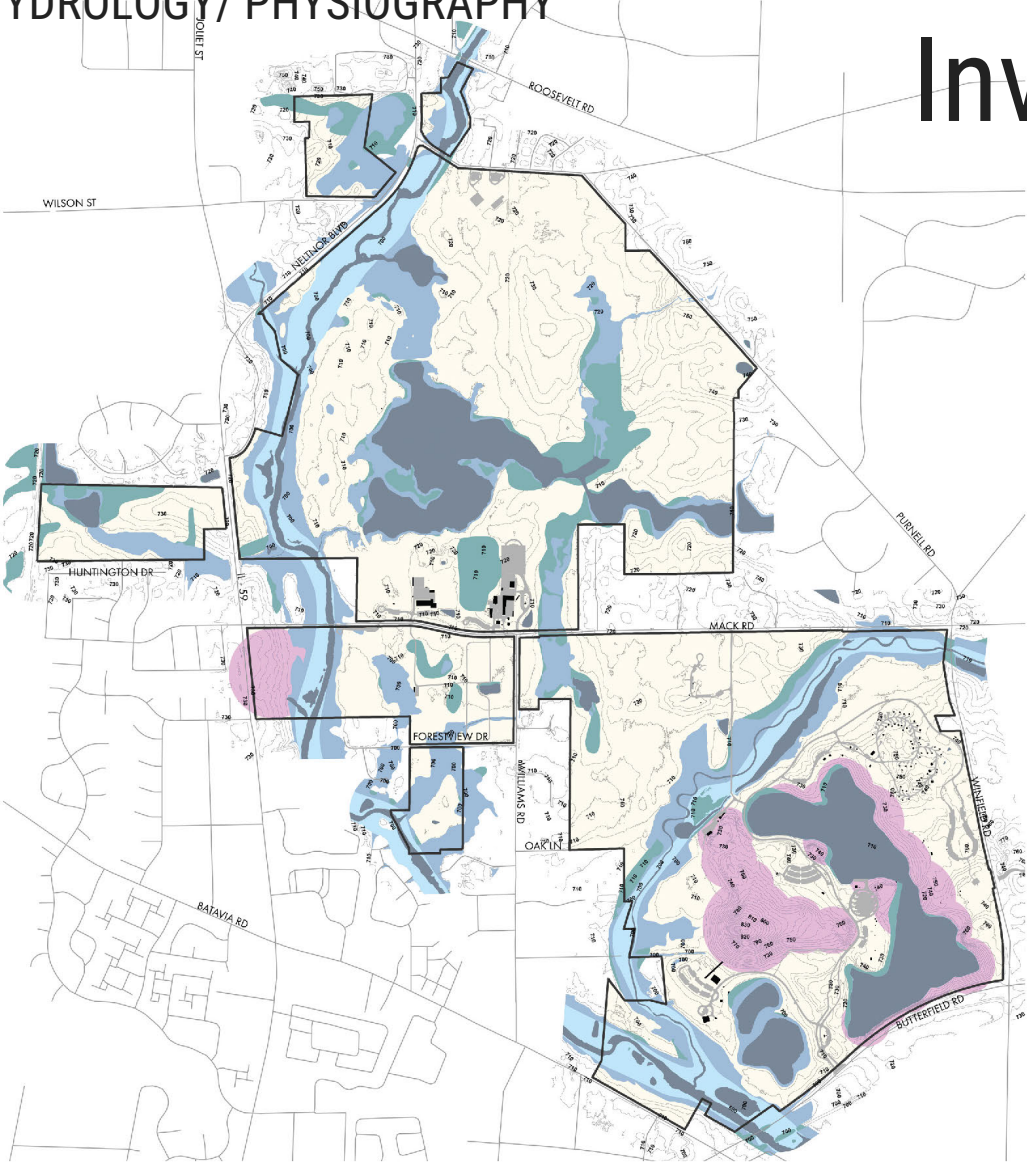
- 1,366-acres
- Warrenville, IL
- One of the District's most popular forest preserves
- It offers fishing, camping, archery, picnic shelters, an off-leash dog area and more...





Inventory & Existing Conditions

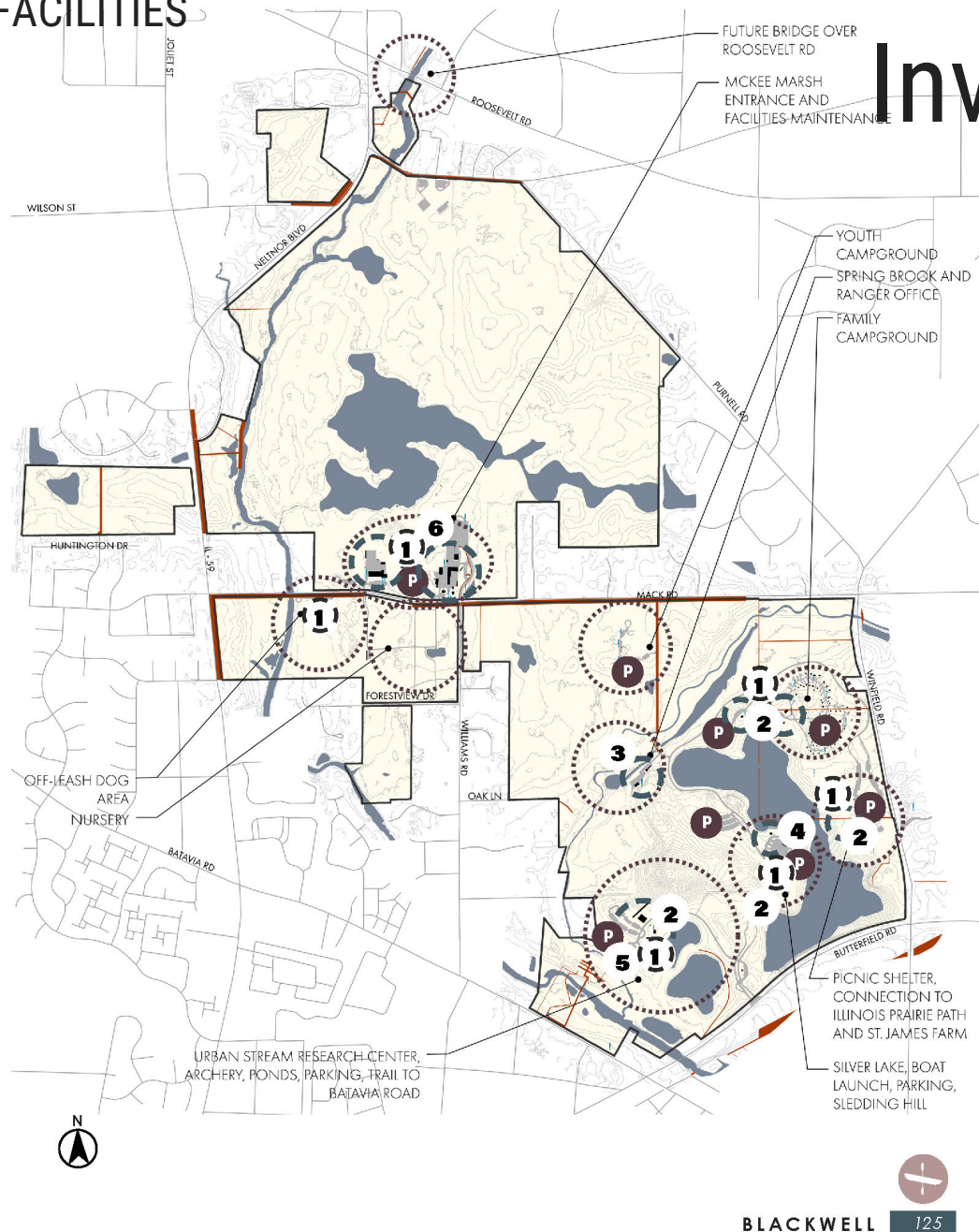




Inventory & Existing Conditions



Inventory & Existing Conditions



Public Engagement

- Survey Question 12
- 183 total respondents
- 166 responded to this question

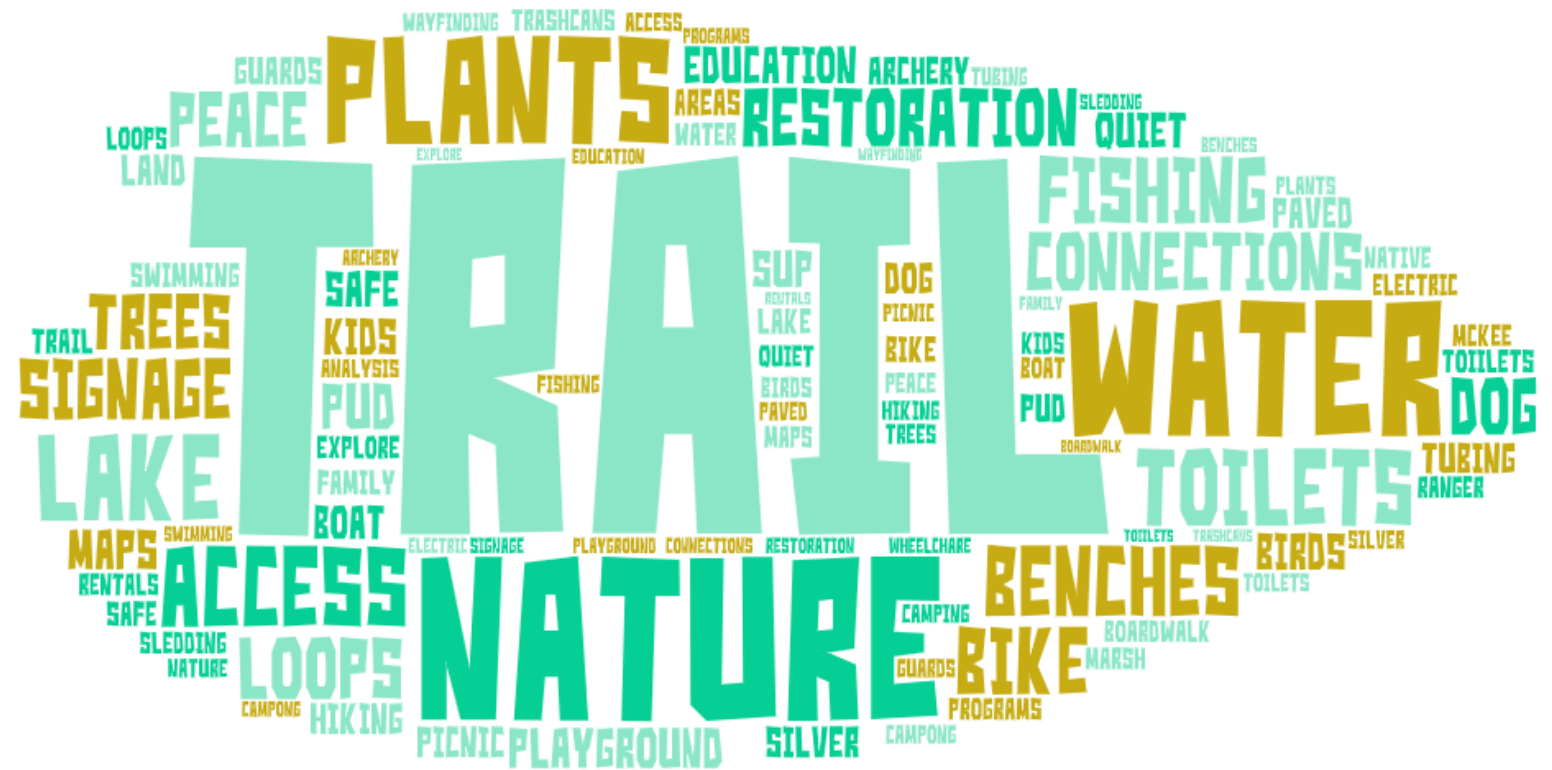
What I love about Blackwell is..



Public Engagement

- Survey Question 14
- 183 total respondents
- 150 responded to this question

What there should be more of at Blackwell is..



Public Engagement

- Survey Question 13
- 183 total respondents
- 119 responded to this question

What there should be less of at Blackwell is...



Public Engagement

Overall Themes and Trends

Key take away:

- They would like to see less of mown areas and invasive species.
- Participants would like to see more trail connections, and restoration.
- They would like to see trail access from Mack Road, education elements, signage, flush toilets, and trail improvements.
- They would like to see fewer commercial improvements, developments, and truck traffic.
- Participants would like to see more habitat restoration and improvements to the trail system and access to the lake.
- Participants would like to see more winter activities like ice skating and fishing.

Proximity of activities	Hill used for carbo / other activities	Paved areas w/ gravel in some areas	additional seating around lake / along trail	Trails (Bike walking etc)
Water activities	Hill available in winter?	More loops + signage	Additional maintenance + more facilities	Hill used for winter activities
Wayfinding / signposting to get into preserves	Lots of machinery, concrete, along Mack Road + cyclic and other traffic	Kayak launch	Hill used for cross country training	Wayfinding signposting within the preserve
Path along Mack and connecting	Campground has nice toilets	Fishing	Path that goes around the lake	Crossroads for fire lanes for vehicles
Turf trails, especially from West Branch Regional Park	Diversity of wildlife	Connecting trail systems where possible	Possible to level out trail approaching Mack Road?	Path at corner of Mack and Winfield
Different environments	Off leash dog park	View from Mack Road improved / changed	Younger generation moving to area and future users	Dog sledding (dry skiing)
McKea marsh popular with bird watchers	Boat launch	Connections between preserves for bikes	Stairwell to private area	Shade area sun through preserve
Hill used for speed skating training (hill runs)	Bridge over route 38 and DuPage River	Archery	McKea to St James - have to go through BWC	Bike trails that are heavily used

Underpass at Winfield Rd. St James to BW	Bike and running trails	Bird watching at McKee marsh	Overlook	Urban stream research center
Dog Park	Campgrounds	Ice fishing	tubing	Trout fish
Canoe / kayaks	Campground days need to be extended	Nursery public access	Inner tube / lawn chairs along river	Trail along river - bro- less people (pri)
McKee marsh have its own page on website	Exercise on hill	Hawk watching on hill?	Increased use during COVID	Pavilion lawn
Discuss importance of preserve during COVID	Cultural history of preserves and how helped people cope with change	Signage and wayfinding / cultural history	History of preserves	"Self-guided tour" QR code app
Acknowledge Native Americans on land	Getting along / connections between areas of preserve	Wayfinding / signage for mileage	Trail around lake	Bird watching groups
Nursery volunteer groups	Short loops appreciated by seniors	Bench placement / more benches		

Natural aspect of process	Did teaching / ongoing nature	Signage about branding	Insurance of those engaged in the education system	Controlled for data accessibility	Get them in line with the 'blackboard' stuff / less on
Fun and amiable monitoring	Views from the hill	Restoration play / scenery on the hill	Remove paperwork where possible	Caricature on education	education in premises
Signage about activities allowed and not allowed	Did teaching / ongoing nature	Some special hands be in the classroom / on the hill	Only students in possession of a pass and a name tag pass	Blackboard crossroads can be confusing	
Determine what is done and where done and how often	Urban design research / better open spaces	Music as entertainment / education	Access to the hill / can be easier	North and of the Prospect as a subject	

LOVE!

Michael Baker Actor and producer	Michael Biehn Actor and producer	Greg Kinnear Actor and producer	Greg Kinnear Actor and producer	Greg Kinnear Actor and producer
Greg Kinnear Actor and producer	Greg Kinnear Actor and producer	Greg Kinnear Actor and producer	Greg Kinnear Actor and producer	Greg Kinnear Actor and producer
Greg Kinnear Actor and producer	Greg Kinnear Actor and producer	Greg Kinnear Actor and producer	Greg Kinnear Actor and producer	Greg Kinnear Actor and producer
Greg Kinnear Actor and producer	Greg Kinnear Actor and producer	Greg Kinnear Actor and producer	Greg Kinnear Actor and producer	Greg Kinnear Actor and producer

MORE! +

1. What is the most interesting thing you have learned about _____?

2. What is the most interesting thing you have learned about _____?

3. What is the most interesting thing you have learned about _____?

4. What is the most interesting thing you have learned about _____?

5. What is the most interesting thing you have learned about _____?

6. What is the most interesting thing you have learned about _____?

7. What is the most interesting thing you have learned about _____?

8. What is the most interesting thing you have learned about _____?

9. What is the most interesting thing you have learned about _____?

10. What is the most interesting thing you have learned about _____?

11. What is the most interesting thing you have learned about _____?

12. What is the most interesting thing you have learned about _____?

13. What is the most interesting thing you have learned about _____?

14. What is the most interesting thing you have learned about _____?

15. What is the most interesting thing you have learned about _____?

16. What is the most interesting thing you have learned about _____?

17. What is the most interesting thing you have learned about _____?

18. What is the most interesting thing you have learned about _____?

19. What is the most interesting thing you have learned about _____?

20. What is the most interesting thing you have learned about _____?

LESS!

Learners are not motivated to learn

Learners are not motivated to learn

Learners are not motivated to learn

Learners are not motivated to learn

Learners are not motivated to learn



4 STRENGTHS, WEAKNESSES OPPORTUNITIES & THREATS ANALYSIS

The purpose of the Strengths, Weaknesses, Opportunities and Threats (SWOT) analysis is to identify areas within the preserve to target for improvement. This exercise also highlights elements and/or programming in Blackwell operating well and to remain.

The SWOT analysis brings together elements and programming from the previous sections within this chapter and combines them with observations and possibilities. The map to the right provides an overview of key items found in the SWOT analysis. The following pages show enlargements of the Focus Areas and SWOT observations.

STRENGTHS

- 1 Diverse ecosystems
- 2 Passive and active recreation
- 3 Looped trail in McKee Marsh
- 4 Silver Lake is a natural asset; provides views and recreation opportunities
- 5 Hawthorne Grove provides a beautiful natural setting
- 6 Well-maintained trails and amenities
- 7 Proximity of Maintenance Operations and Grounds Management to one another and to the nursery
- 8 Scenic views from Mt. Hoy
- 9 Recreation provided by Mt. Hoy

OPPORTUNITIES

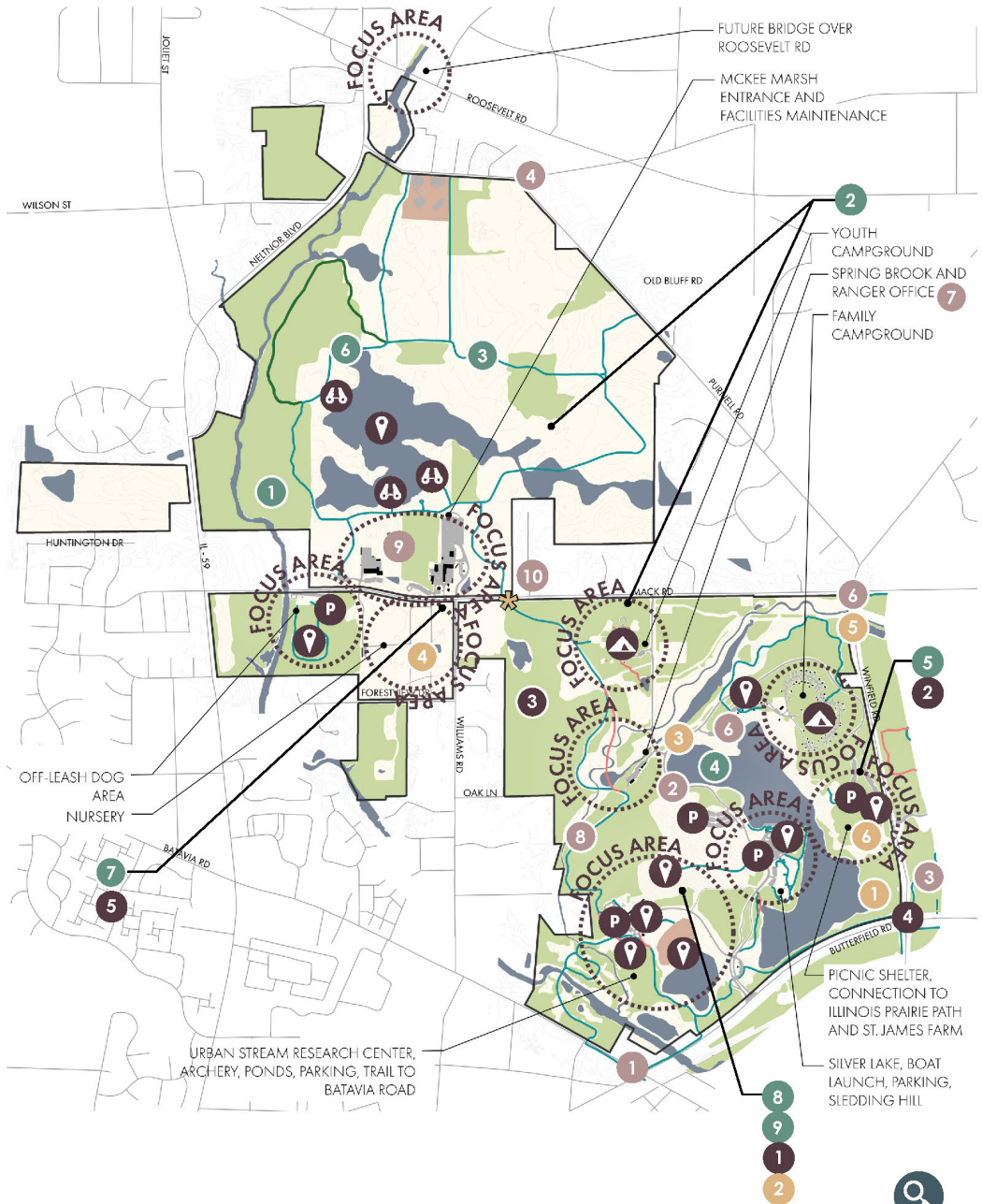
- 1 Trail around Silver Lake
- 2 Mt. Hoy improvements
- 3 Elimination of large turf areas
- 4 Educational programming and partnership in the nursery
- 5 Reduction in vehicular traffic
- 6 Hawthorne Grove is a unique, underutilized area

WEAKNESSES

- 1 Vehicular and trail conflicts
- 2 Disjointed vehicular access
- 3 Lack of trail connection to St. James Farm Preserve
- 4 Lack of trail connections to West DuPage Woods
- 5 Lack of trail connections from the family campground to the other preserve amenities
- 6 Lack of in/out vehicle connections without the assistance of a ranger at the Family Campground
- 7 Ranger office is inadequate to serve the current and future needs of the rangers
- 8 Lack of a continuous loop on the south side of the preserve
- 9 Grounds and Natural Resources Complex is inefficient and deficient
- 10 Crossing conflict

THREATS

- 1 Mt. Hoy landfill has erosion, settling, leaching, and a muddy base due to winter use, etc.
- 2 Lack of in/out vehicle connections without the assistance of a ranger
- 3 Heavily used
- 4 Bike/pedestrian crossing at the intersection of Winfield Road and Butterfield Road
- 5 Crossing from the nursery to the Grounds and Natural Resource Management Divisions is not optimal





Key Takeaways

- Need for educating the public on what the Urban Stream Center is researching
- Need for PR & Communications/Education surrounding restoration activities
- Trail connections along Mack Rd are desired
- New trails around Silver Lake are desired
- Elimination of turf grass/ more restoration

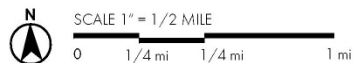


Discovery and Analysis

Waterfall Glen

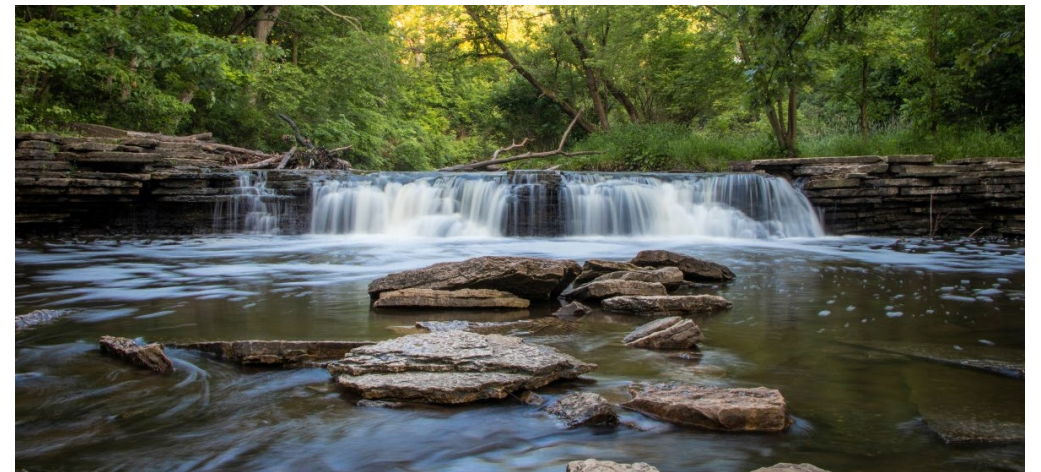


Waterfall Glen Forest Preserve



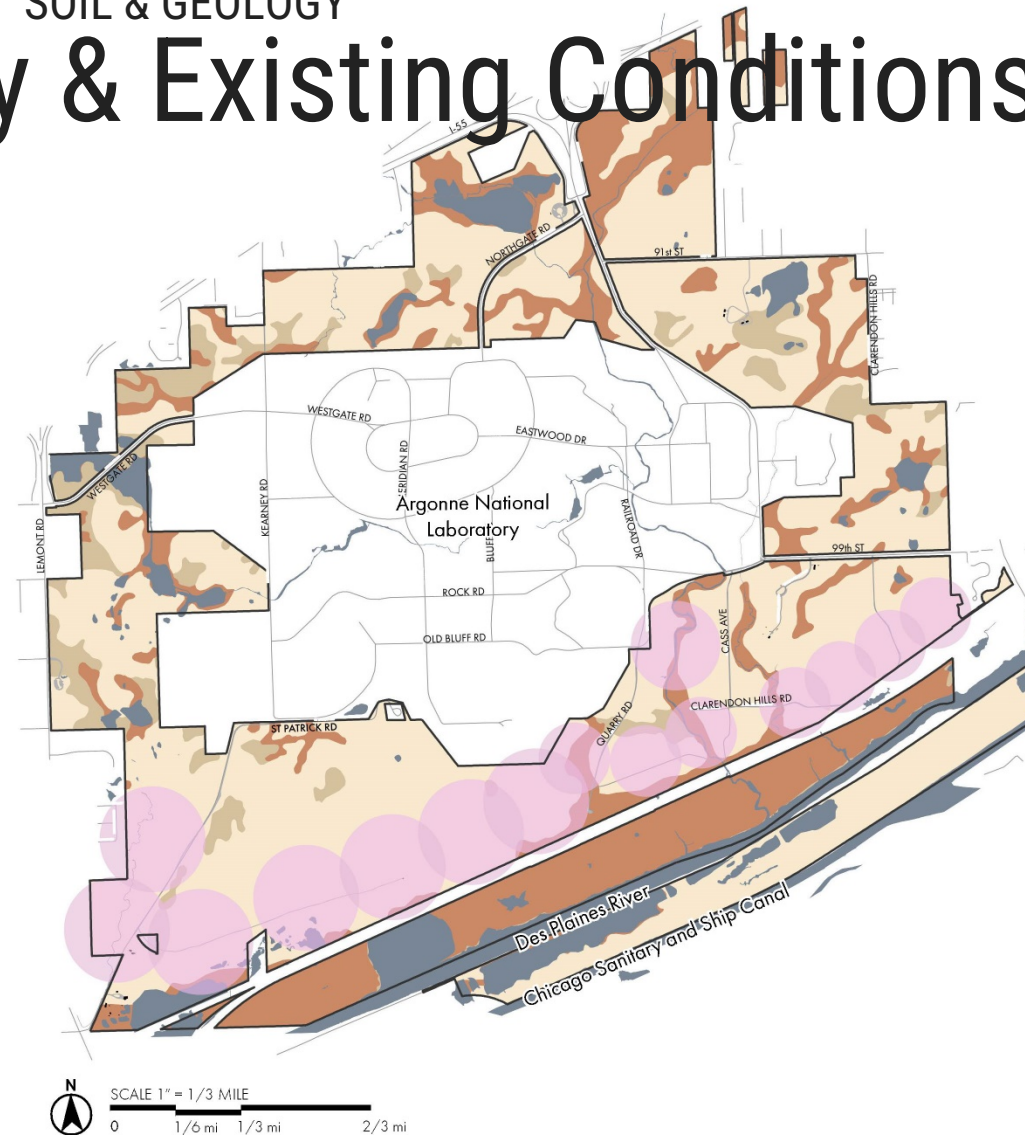
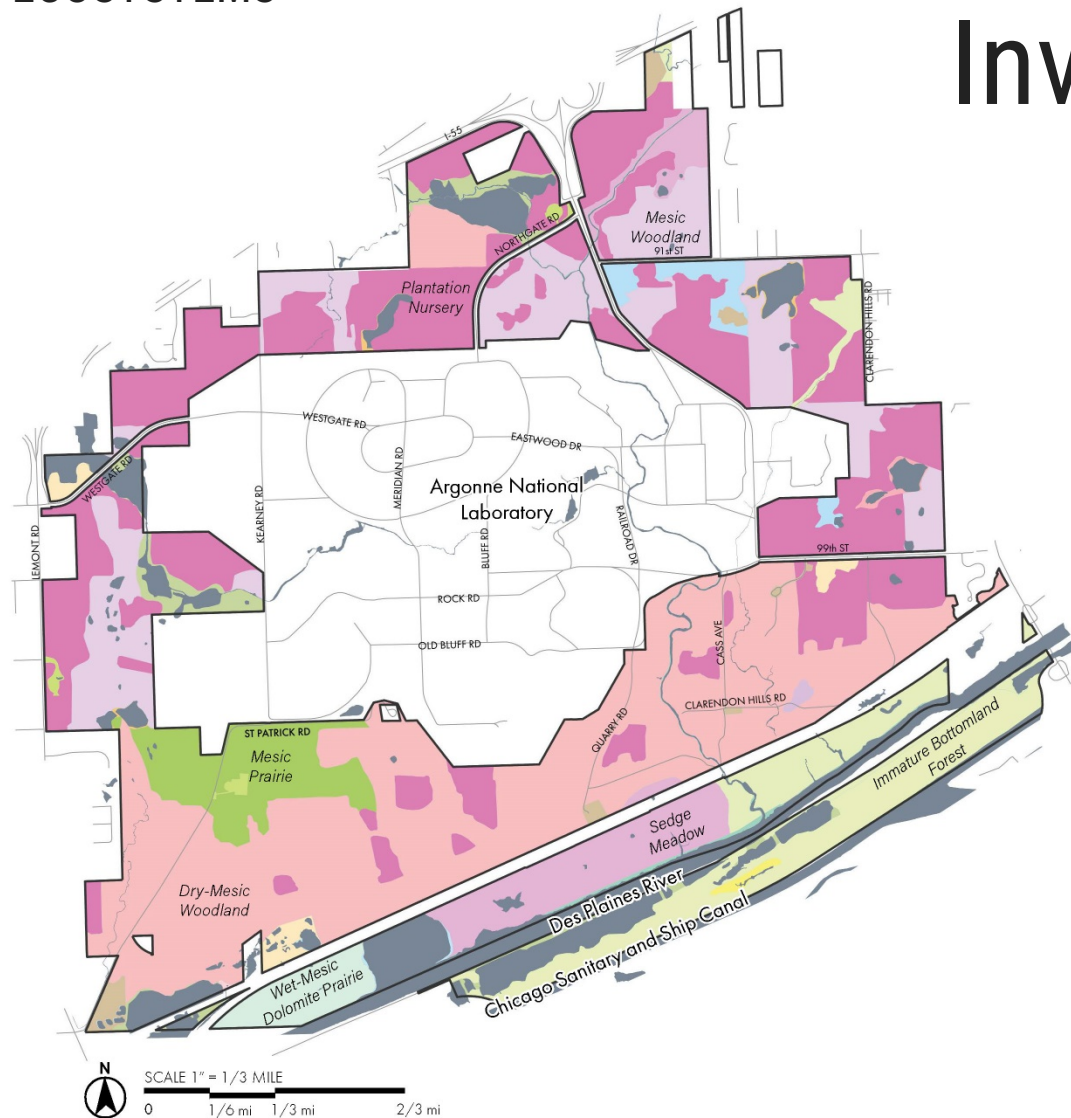
Waterfall Glen

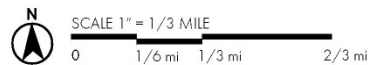
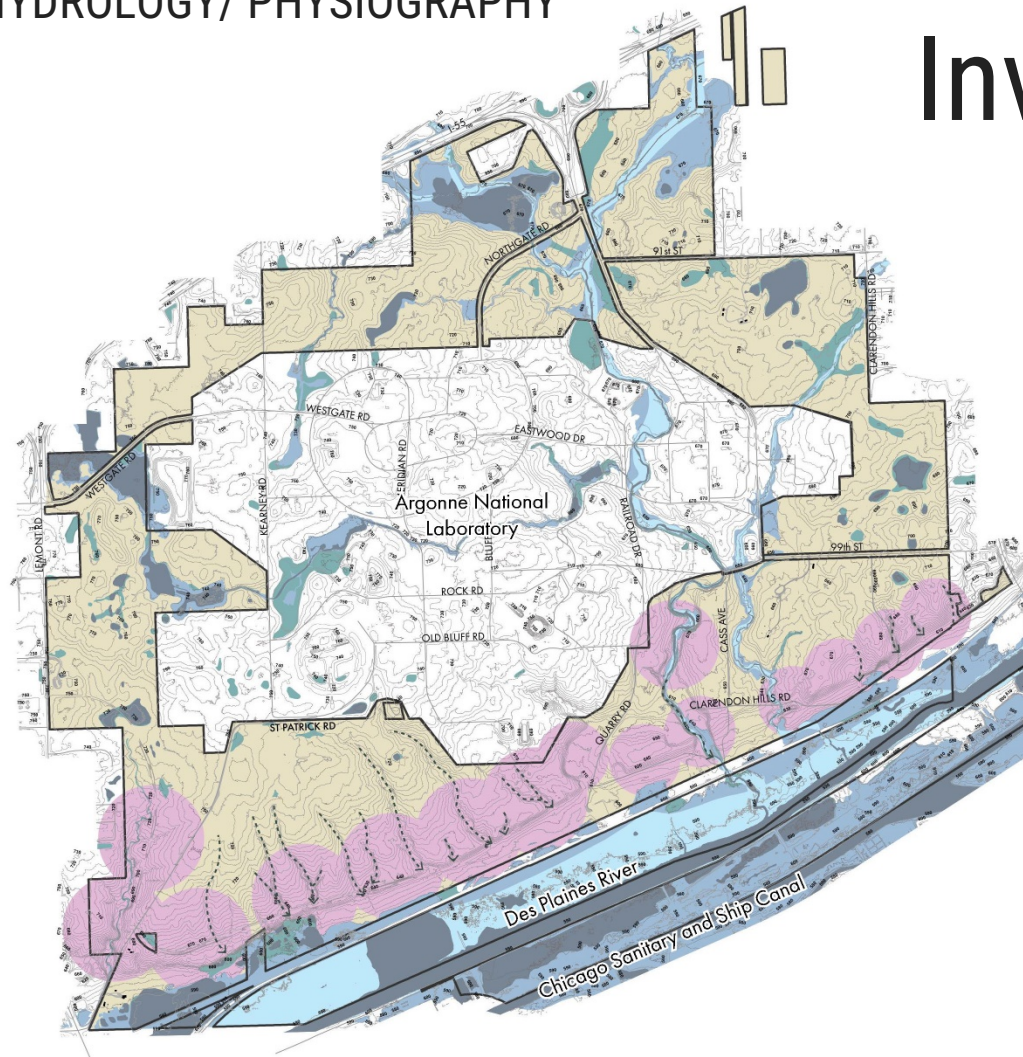
- 2,503-acres
- Darien, IL
- One of the most ecologically impressive parcels of open space in the Forest Preserve District of DuPage County, if not northern Illinois.
- It is also one of the District's most popular forest preserves, known for its Rocky Glen waterfall, Sawmill Creek bluff overlook, and extensive trails.
- Waterfall Glen offers gently rolling to hilly terrain with 11 miles of trails popular with hikers, bicyclists, horseback riders and cross-country skiers.
- It also offers fishing and an orienteering course, model airplane field and youth group campground.





SOIL & GEOLOGY Inventory & Existing Conditions





Inventory & Existing Conditions



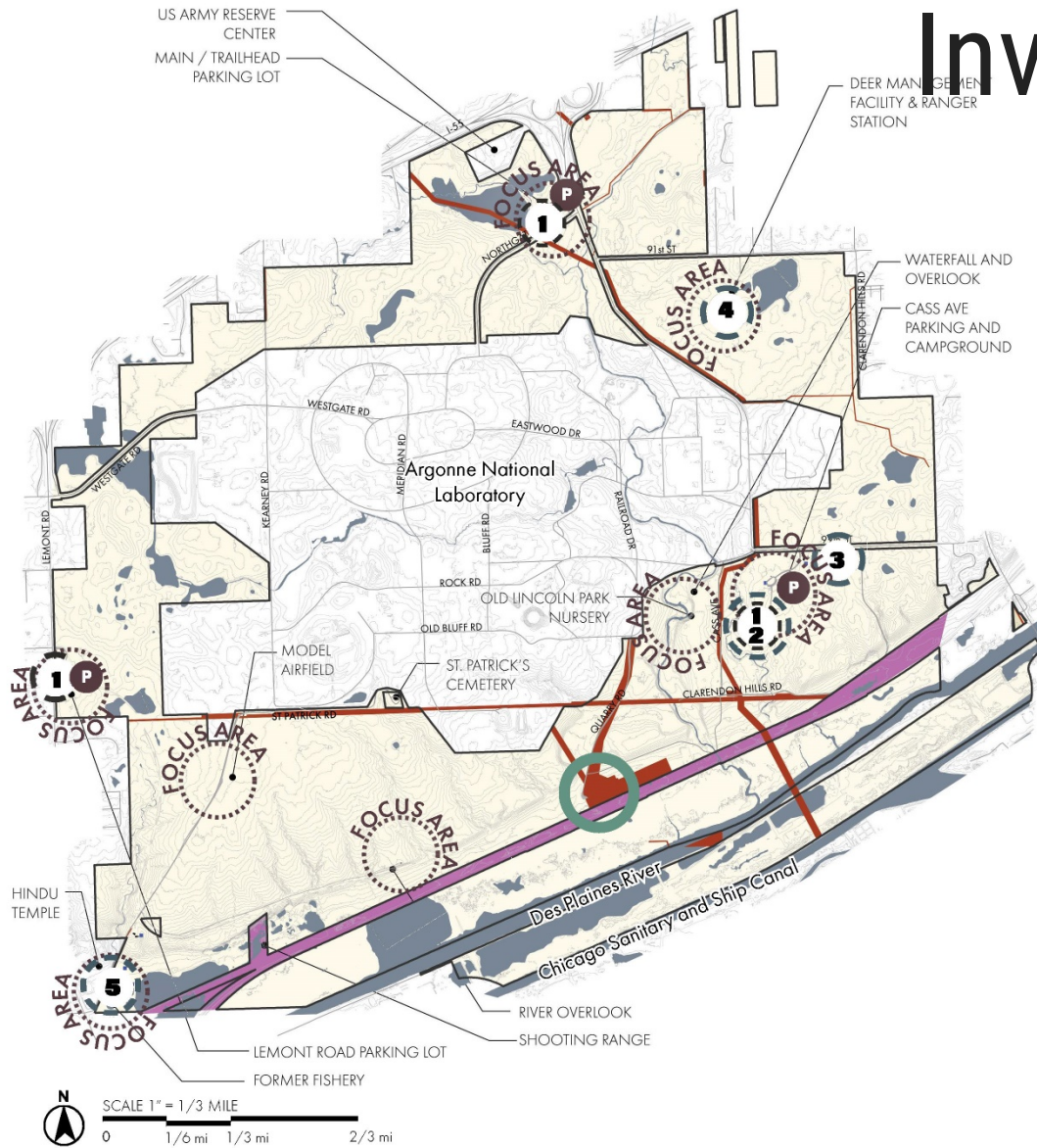


FACILITIES

US ARMY RESERVE
CENTER
MAIN / TRAILHEAD
PARKING LOT

DEER MANAGEMENT
FACILITY & RANGER
STATION

Inventory & Existing Conditions



Public Engagement

- Survey Question 13
- 202 total respondents
- 181 responded to this question

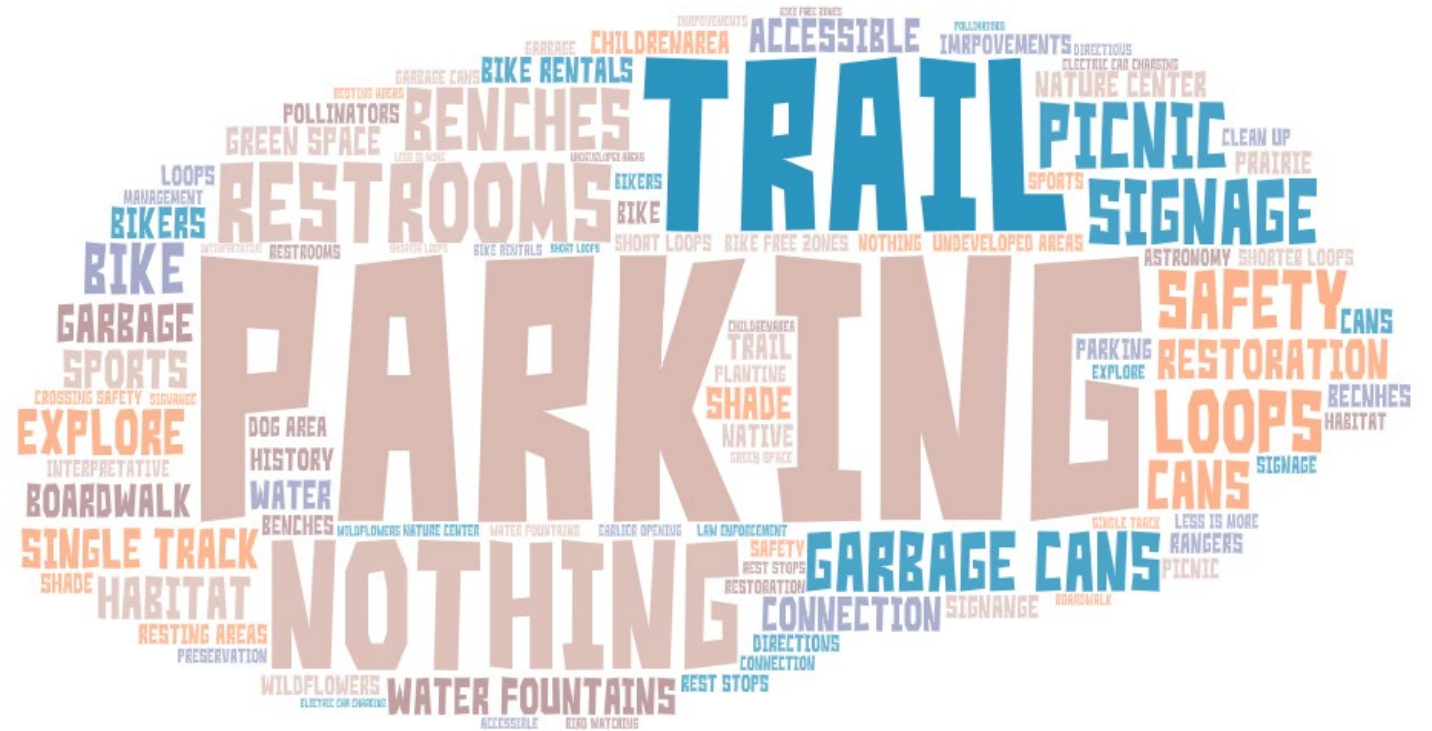
What I love about Waterfall Glen is...



Public Engagement

- Survey Question 15
- 202 total respondents
- 164 responded to this question

What there should be more of at Waterfall Glen is...



Public Engagement

- Survey Question 14
- 202 total respondents
- 145 responded to this question

What there should be less of at Waterfall Glen is...



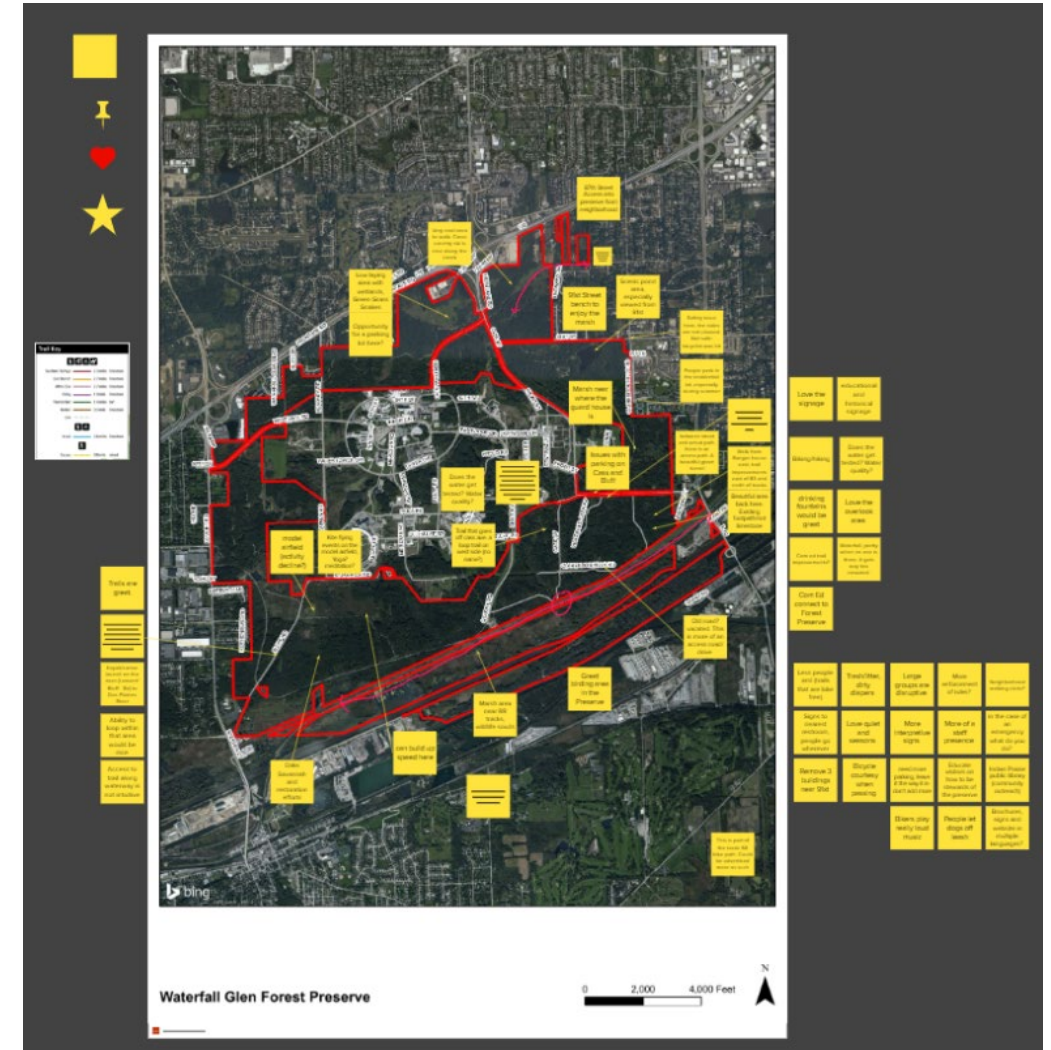


Public Engagement

Themes and Trends

Key take away:

- The Preserve gets crowded. Some participants want more parking. Others think additional parking will cause more crowding at the preserve.
- Participants would like to see improvements within the trail systems.
- They would like to see more education about protecting Sawmill Creek, parking lots, improvements to access and amenities (flush toilets), and overall prioritization of Natural Resources in the master plan.
- They would like to see improvements within the preserve such as flush toilets, benches, and hydration station, safer parking, and increased ranger presence.





4 STRENGTHS, WEAKNESSES OPPORTUNITIES & THREATS ANALYSIS

The purpose of the Strengths, Weaknesses, Opportunities and Threats (SWOT) analysis is to identify areas within the preserve that are optimal for improvements. This exercise also highlights elements and / or programming in Waterfall Glen that are operating well and should remain as they are.

The SWOT analysis brings together elements and programming from the previous sections within this chapter and combines them with observations and possibilities. The map to the right provides an overview list of items in the SWOT analysis, and the following pages show enlargements of the Focus Areas.

STRENGTHS

- 1 Diverse ecosystems
- 2 Looped trail/trail condition is good
- 3 Rocky Glen Waterfall and overlooks
- 4 Airfield is a unique use

WEAKNESSES

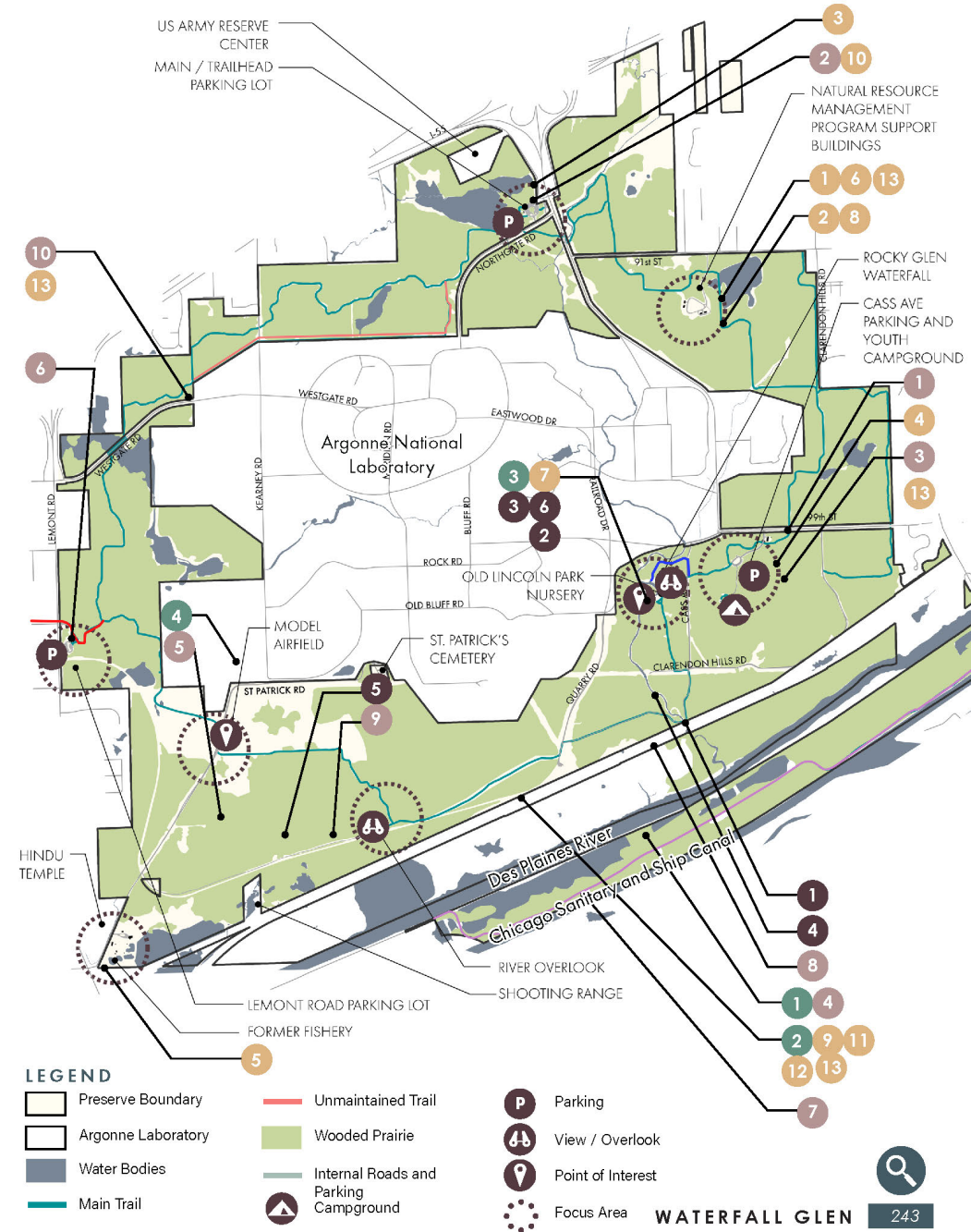
- 1 Vehicular and trail conflicts
- 2 Parking lots are inefficient and geared toward equestrian use, which is minimal
- 3 Bluff Road parking lot could use more spaces and intersection could be improved
- 4 No service access to this area
- 5 Disjointed vehicular access, spoils from canal and fish barrier make improvement a challenge
- 6 Lots of noise at Lemont Rd parking lot
- 7 The area within the Des Plaines River is hard to access and not comfortable to visit
- 8 Rail line is bisecting the site
- 9 High voltage wires run through the site
- 10 Internal roads are gated and confusing to visitors

OPPORTUNITIES

- 1 Relocating the deer management facility allows for the campground to be moved there and for further restoration of the high class woodland where the campground currently resides
- 2 Connect campground to other amenities
- 3 Replace latrines with flush toilets
- 4 Additional parking (200 car lot planned)
- 5 Maintenance site near old fishery could have more formal use (research, education, etc.)
- 6 Bluffs near campground relocation could be restored
- 7 Restore Rocky Glen waterfall and create more resilient access and surfacing
- 8 More interaction/crossing/observation opportunities at water bodies
- 9 Additional seating along trails and at points of interest
- 10 Expand main parking lot and frontage road parking lot (if needed and possible)
- 11 Wider areas of trail for bike/ped passing/pull off
- 12 Additional loops where possible
- 13 Wayfinding and directional/educational signage (throughout preserve)

THREATS

- 1 Sawmill Creek vehicular and pedestrian bridge crossing
- 2 Old foundations adjacent to trail down to waterfall
- 3 Erosion and overuse at waterfall (root exposure, stones, worn paths)
- 4 Flooding of Sawmill Creek
- 5 Erosion along ravines
- 6 Waterfall overlook bank/trail needs stabilization





Key Takeaways

- Waterfall wear/maintenance/overuse has challenges that need to be evaluated and addressed
- Parking issues/inadequate parking needs to be addressed
- Need for more efficient layout of main parking lot
- Additional parking
- Opportunity to move youth campground/relocate deer management
- Focus on mitigating issues with overcrowding/congestion
- Opportunity for model airfield (highest and best use and/or compliment existing use)
- Need to relieve congestion at the 91st Marsh
- Hydration station and flush toilets



- Vision and Goals
- Next Phases of the Master Plan Process
- Schedule

Next Steps



Next Phases

5 STAGE APPROACH

1

DISCOVERY

Discovery of the critical issues for each property that will inform the plans

2

ANALYSIS

Analysis of the existing conditions and user concerns for potential improvements

3

IDEAS

Ideas for various ways to improve and maintain various aspects of the properties

4

REFINEMENT

Refinement of the ideas into a preferred plan that reflects stakeholder concerns

5

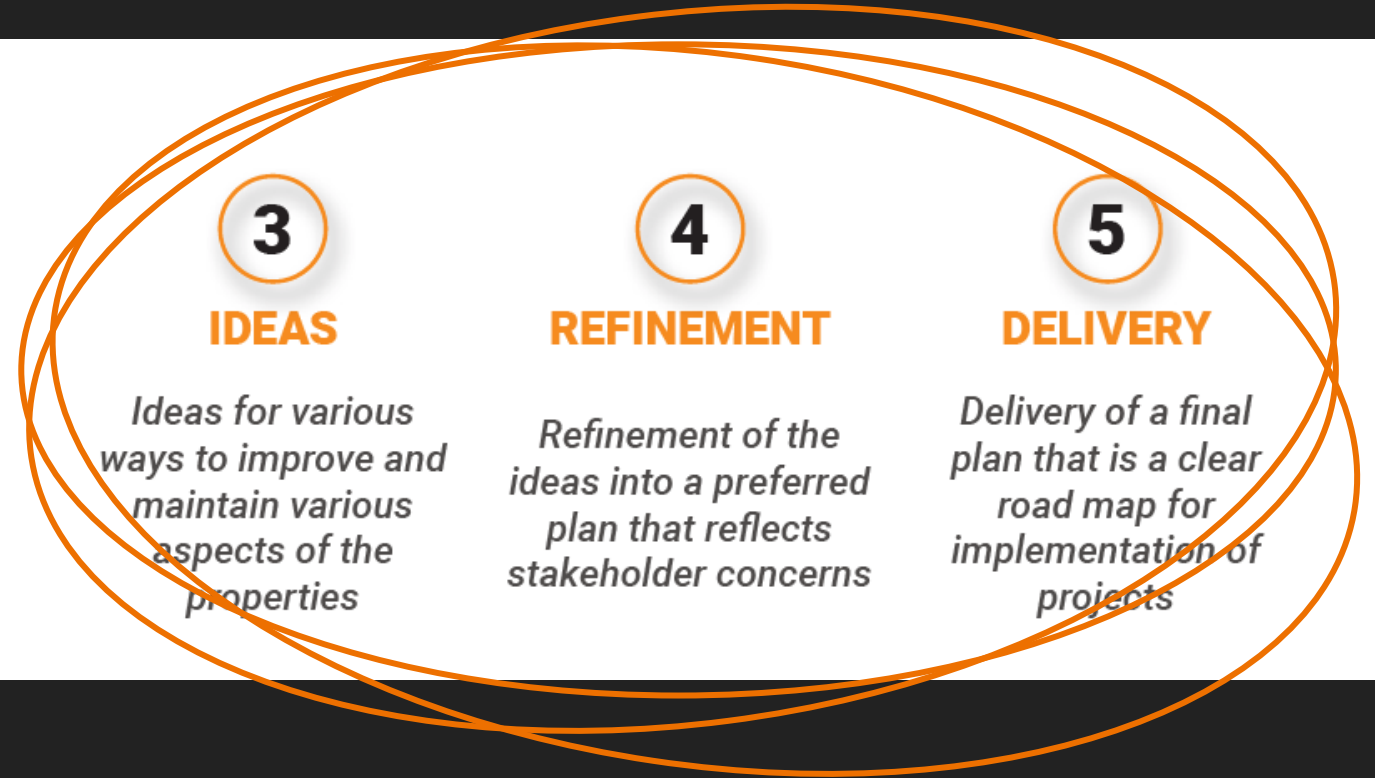
DELIVERY

Delivery of a final plan that is a clear road map for implementation of projects



Schedule

5 STAGE APPROACH



December



March



August



Questions?



Thank you!