



Forest Preserve District  
of DuPage County

Grounds and Natural Resource Management  
Operational Assessment and Logistics Plan  
APPENDIX A

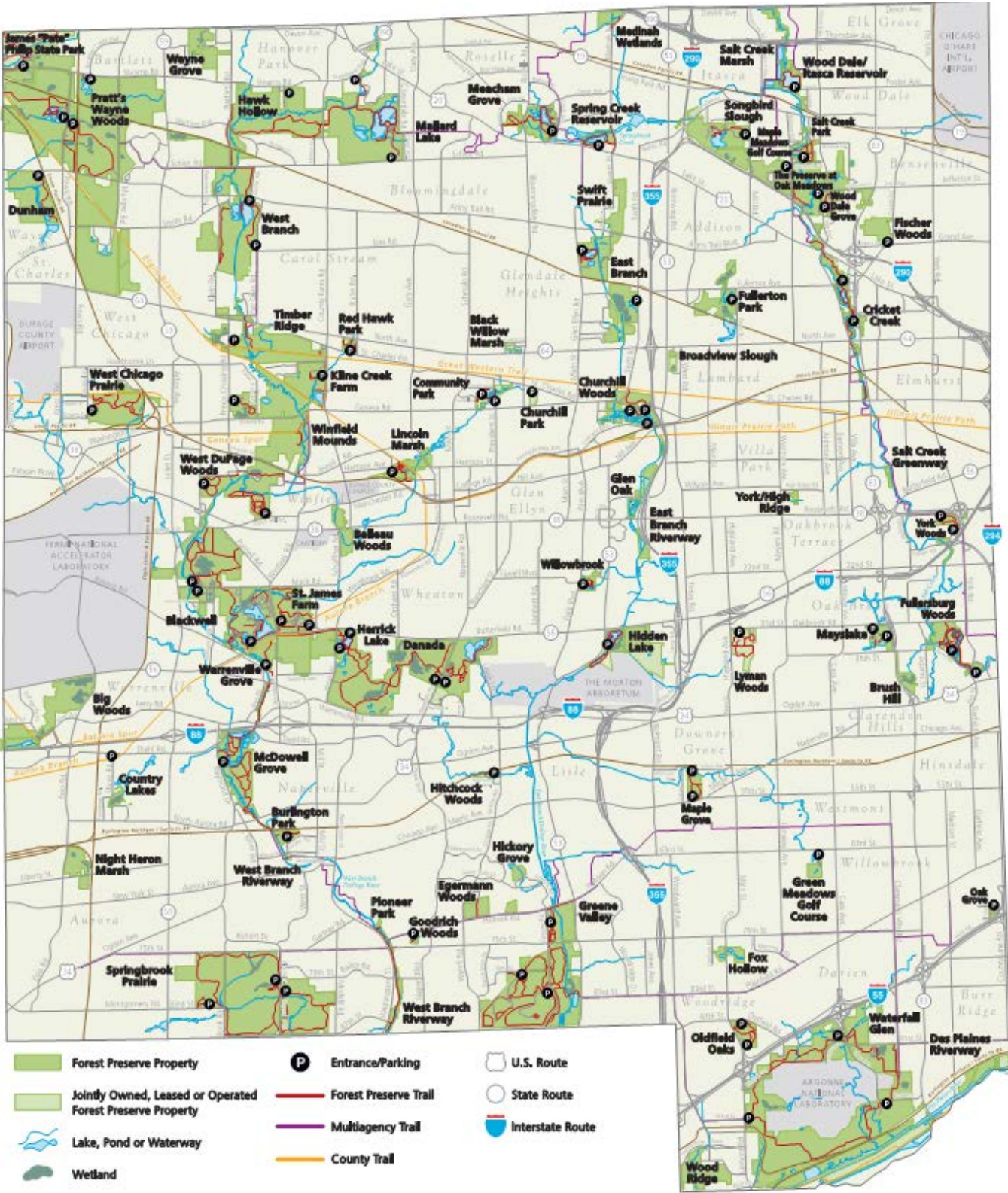
May 10, 2022

Prepared By:

KNIGHT

Engineers & Architects

221 North LaSalle Street  
Suite 300  
Chicago, IL 60601-1211  
Telephone (312) 577-3300  
Fax (312) 577-3526  
www.knightea.com



Appendix A – FPDDC-GNR Property Review

The following buildings/structures were part of the properties reviewed as part of this report, they were photographed and in a several cases scans were taken to allow the reader to do a virtual tour of the facility.

Each location has an aerial site map, exterior and interior photos captioned to indicate what is being viewed.

Blackwell Campus - 29W220 Mack Rd

- Building BW-017A, 017B, 017C <https://my.matterport.com/show/?m=6J3gtd1oqE5>
- Building BW-026 <https://my.matterport.com/show/?m=qAnPrbJq4wr>
- Building BW-003A, 003B <https://my.matterport.com/show/?m=NVNRdd9pNNb>
- Building BW-003 <https://my.matterport.com/show/?m=X2UUUNvgwug>
- Building BW-020 <https://my.matterport.com/show/?m=uEUaCHjoz8U>
- Building 02-11555
- Building 02-1722
- Building BW-022

Blackwell Site Ops (West Ranger Station) - 28W260 Purnell Rd.

- Building BW-007F <https://my.matterport.com/show/?m=YeqCxFbb6eo>
- Building BW-007G <https://my.matterport.com/show/?m=Uac4Wnm7D78>
- Building BW-007 <https://my.matterport.com/show/?m=fmtxqCs9ZGm>

Each Branch (Schwarz Barn) - 21W761 W Army trail Rd.

- Building 08-8978 <https://my.matterport.com/show/?m=PCWw25mPDCw>

Waterfall Glenn (Natural Resources Program Support) - 10S273 Argonne Ridge Rd.

- Building WFG-008 <https://my.matterport.com/show/?m=dxro7rAELeY>
- Building WFG-007 <https://my.matterport.com/show/?m=SxuHjHx5gt3>

Greene Valley (Landfill Barn) - 8S350 Whittington CT

- Building GV-010 <https://my.matterport.com/show/?m=dDPPdg4sLgZ>

Churchill Woods (East Ranger Station) – 21W242 St. Charles Rd.

- Building CH-006
- Building CH-006A
- Building CH-005
- Building CH-009
- Building CH-010

DuPage County Public Works – 7099 IL-53, Woodridge, Illinois

Taking a Virtual Tour...

If this document is being viewed in a digital format a virtual tour can be taken by doing the following:

**Ctrl+Click** on the link, above or on the sheet containing the Site Map for the property. Doing so will send the reader to the *Matterport* web site. *If you are reading a hard copy of this document, type the link into your internet search engine to access the tours.*

Click the “Play” arrow on the initial page this will flash past the plan of the building to a point to start the tour. Use your mouse or touch pad to navigate through the building, left clicking on points in the view will advance you to that views location. If a door is closed in the view try clicking on it. If it opens then you can continue the tour through that portion of the building. *Click the “Help” button on the bottom right side of view for more detailed navigation instructions.*

There are additional tools located in the bottom left corner of the view, as well as interior photos located at the Download menu at the top left of the page.



Regulatory Requirements

The following are the codes which will need to be reviewed during the design of any renovations, additions, and/or new construction. This data was acquired from each of the jurisdiction’s web sites.

All facilities where work is to be performed shall be evaluated with DuPage County’s or local municipality’s adopted codes. The listed municipalities are for the locations where this report proposes to work.

The County of DuPage (unincorporated) – Codes

- International Building Code (IBC) - 2015
- International Fire Code (IFC) - 2015
- International Mechanical Code (IMC) - 2015
- International Fuel Gas Code (IFGC) - 2015
- International Property Maintenance Code (IPMC) - 2015
- NFPA 70 National Electric Code (NEC) - 2014
- Illinois Energy Efficient Code (IEEC) - 2018
- Illinois State Plumbing Code - 2017
- Illinois Accessibility Code - 2018

Blackwell Preserve in Warrenville – Codes

- International Building Code (IBC) – 2015 w/ Amendments
- International Fire Code (IFC) – 2015 w/ Amendments
- International Mechanical Code (IMC) – 2015
- International Fuel Gas Code (IFGC) - 2015
- International Property Maintenance Code (IPMC) - 2015
- NFPA 70 National Electric Code (NEC) - 2017 w/ Amendments
- International Energy Conservation Code (IECC) – 2015 w/ Illinois Amendments

- Illinois State Plumbing Code - 2014
- Illinois Accessibility Code – 2018

Churchill Woods in Glen Ellyn – Codes

- International Building Code (IBC) – 2009 w/ Amendments
- International Fire Code (IFC) – 2009 w/ Amendments
- International Mechanical Code (IMC) – 2009 w/ Amendments
- International Fuel Gas Code (IFGC) - 2009 w/ Amendments
- International Property Maintenance Code (IPMC) - 2009 w/ Amendments
- NFPA 70 National Electric Code (NEC) - 2011 w/ Amendments
- Illinois Energy Efficient Code (IEEC) – 2018 w/ Amendments
- Illinois State Plumbing Code - 2014
- Illinois Accessibility Code – 2018
- NFPA 101 Life Safety Code – 2009

Greene Valley in Naperville – Codes

- International Building Code (IBC) –2018 w/ Amendments
- International Fire Code (IFC) –2018 w/ Amendments
- International Mechanical Code (IMC) –2018 w/ Amendments
- International Fuel Gas Code (IFGC) - 2018 w/ Amendments
- International Property Maintenance Code (IPMC) - 2018 w/ Amendments
- NFPA National Electric Code (NEC) – 2017 w/ Amendments
- International Energy Conservation Code (IECC) – 2018 w/ Illinois Amendments
- Illinois State Plumbing Code - 2014 w/ Amendments
- Illinois Accessibility Code – 2018



Blackwell Campus - 29W220 MACK RD.

Site Legend

- A:** Building BW-017, 017A, 017B, 017C  
Vehicle & Equipment Storage Building  
Photos 2-12
- B:** Building BW-026  
Vehicle Wash & Chemical Mixing Building  
Photos 13-23
- C:** Building BW-003A, 003B  
Equipment Storage Building  
Photos 24-34
- D:** Building BW-003  
Storage Building  
Photos 35-45
- E:** Building BW-020  
Administration Office Building  
Photos 46-56
- F:** Building 02-11555  
Seed Processing Trailer  
Photos 57-65
- G:** Building 02-1722  
Covered Storage Structure  
Photos 66-70
- H:** Building BW-022  
Facilities Management Building  
Photos 71-81
- I:** Building 02h-180-7748  
Sign Shop Building  
Photos "None"
- J:** Building BW-022  
Fleet Maintenance Building  
Photos "None"
- K:** Building BW-017D  
Covered Storage Structure  
Photos "None"

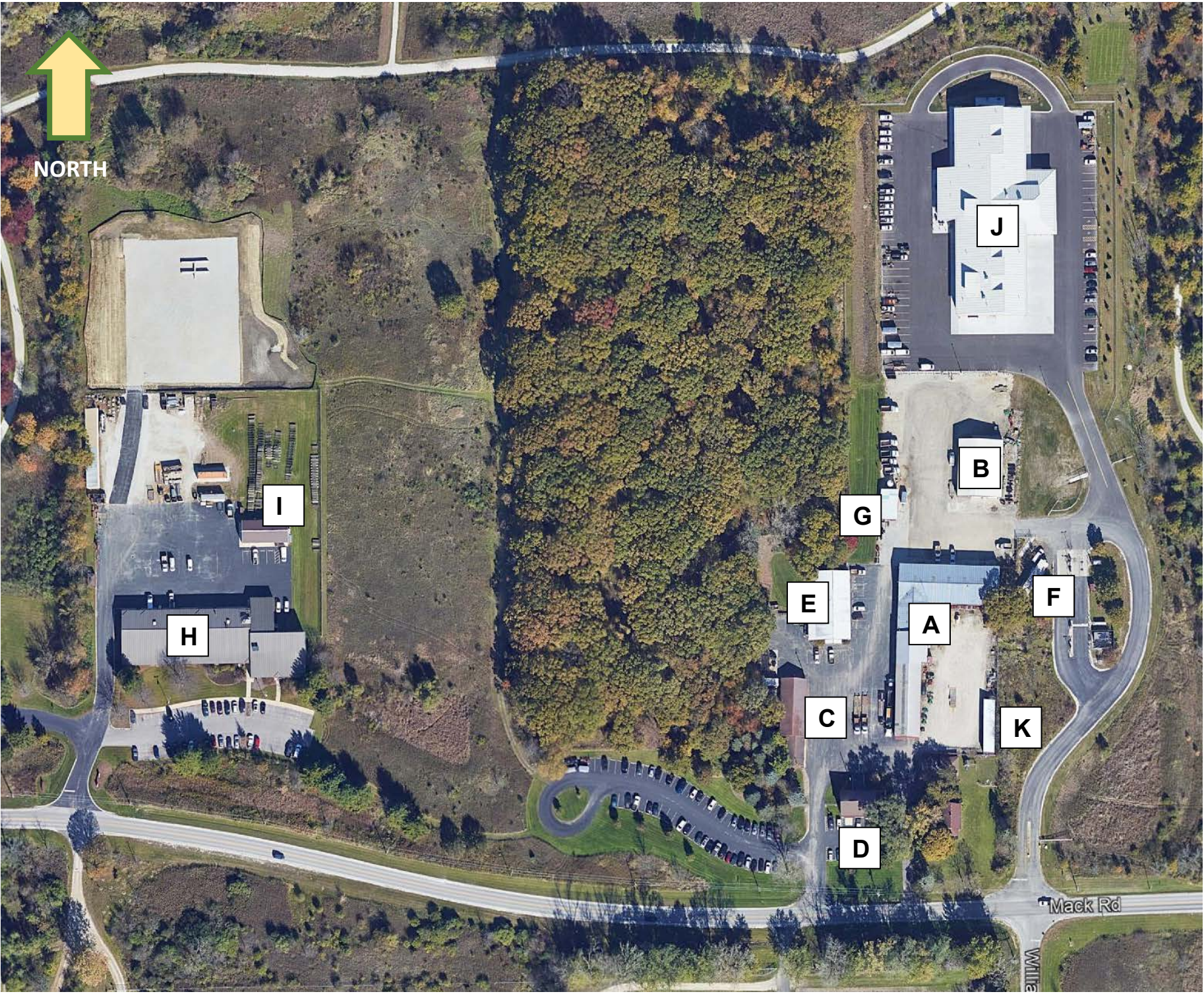


Photo 1 - Blackwell Campus Site Map



A: BW-017, 017A, 017B, 017C

Vehicle & Equipment Storage Building

MATTERPORT SCANS: <https://my.matterport.com/show/?m=6J3gtd1oqE5>



Photo 2 - West Facade



Photo 3 - North Facade



Photo 4 - East Facade



Photo 5 - South Facade

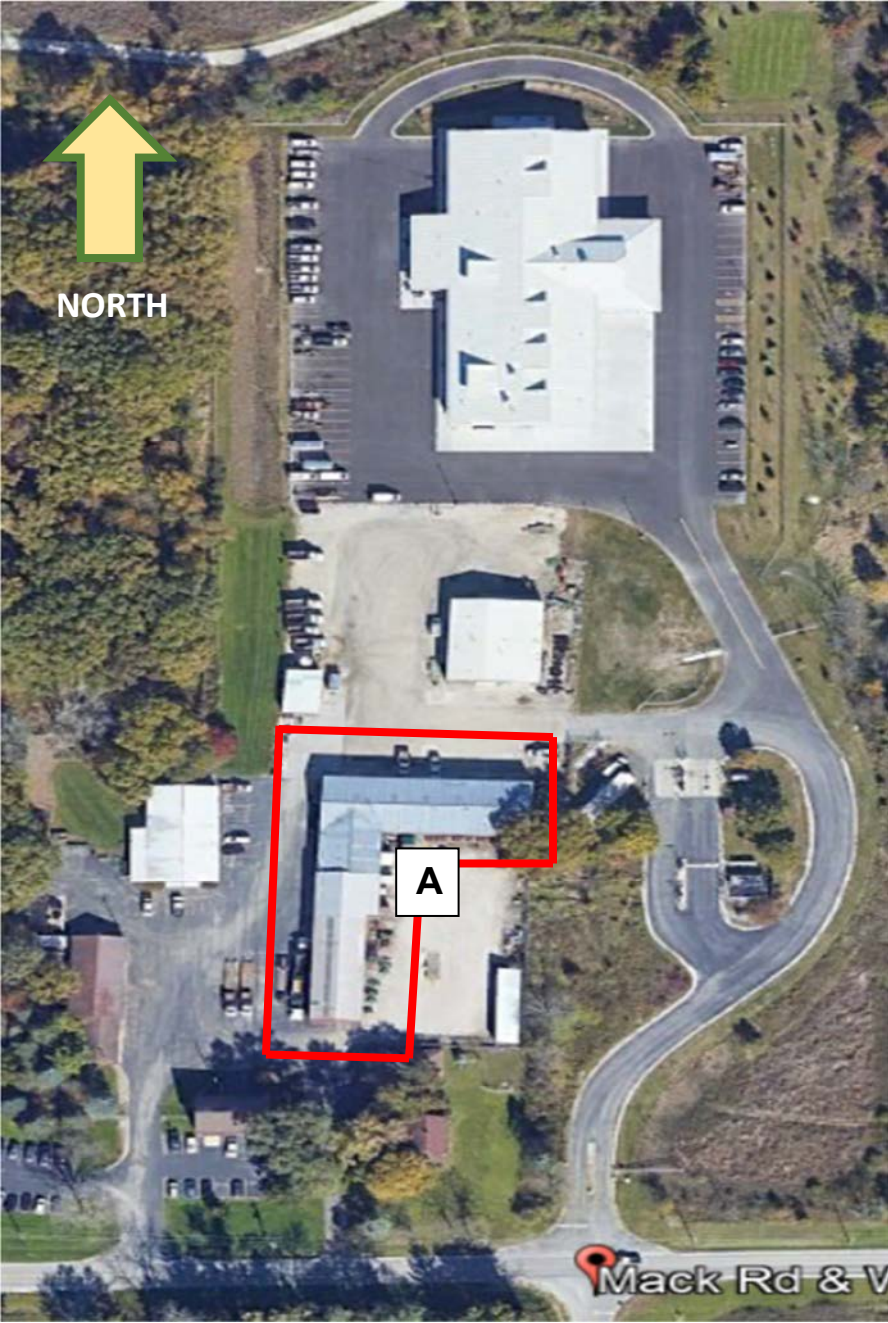


Photo 6 - Site Map



A: BW-017, 017A, 017B, 017C

Vehicle & Equipment Storage Building



Photo 7 - BW-017 Interior View Looking North

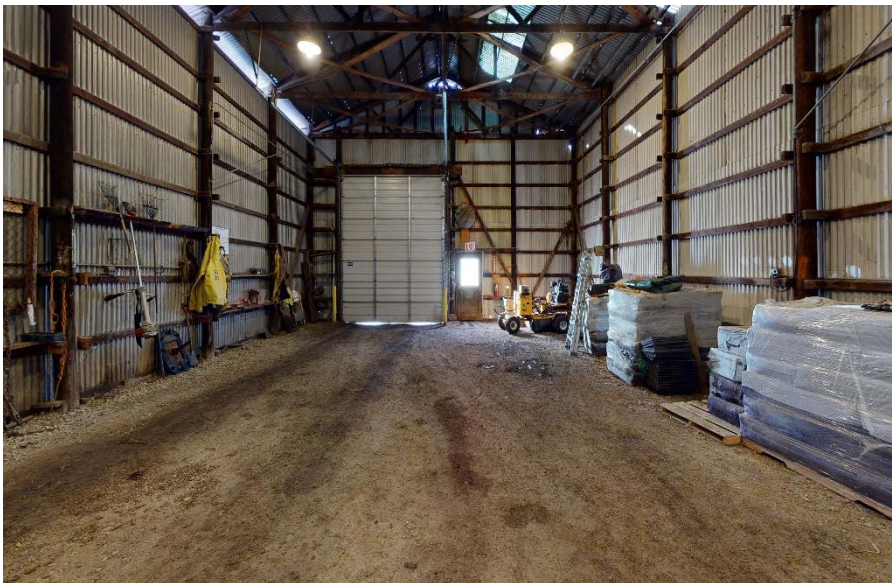


Photo 8 - BW-017 Interior View Looking South

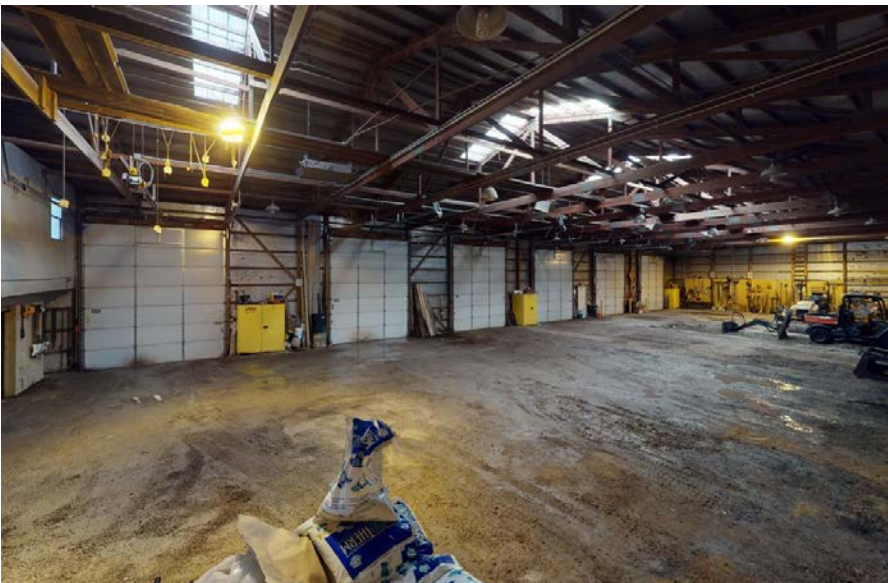


Photo 9 – BW-017C Interior View Looking North



Photo 10 - BW-017C Interior View Looking North



Photo 11 - BW-017C Interior View Looking Southwest



Photo 12 - BW-017C Interior View Looking East



B: BW-026

Vehicle Wash & chemical Mixing Building

MATTERPORT SCANS: <https://my.matterport.com/show/?m=qAnPrbJg4wr>



Photo 13 - West Facade



Photo 14 – North Facade



Photo 15 - East Facade



Photo 16 - South Facade

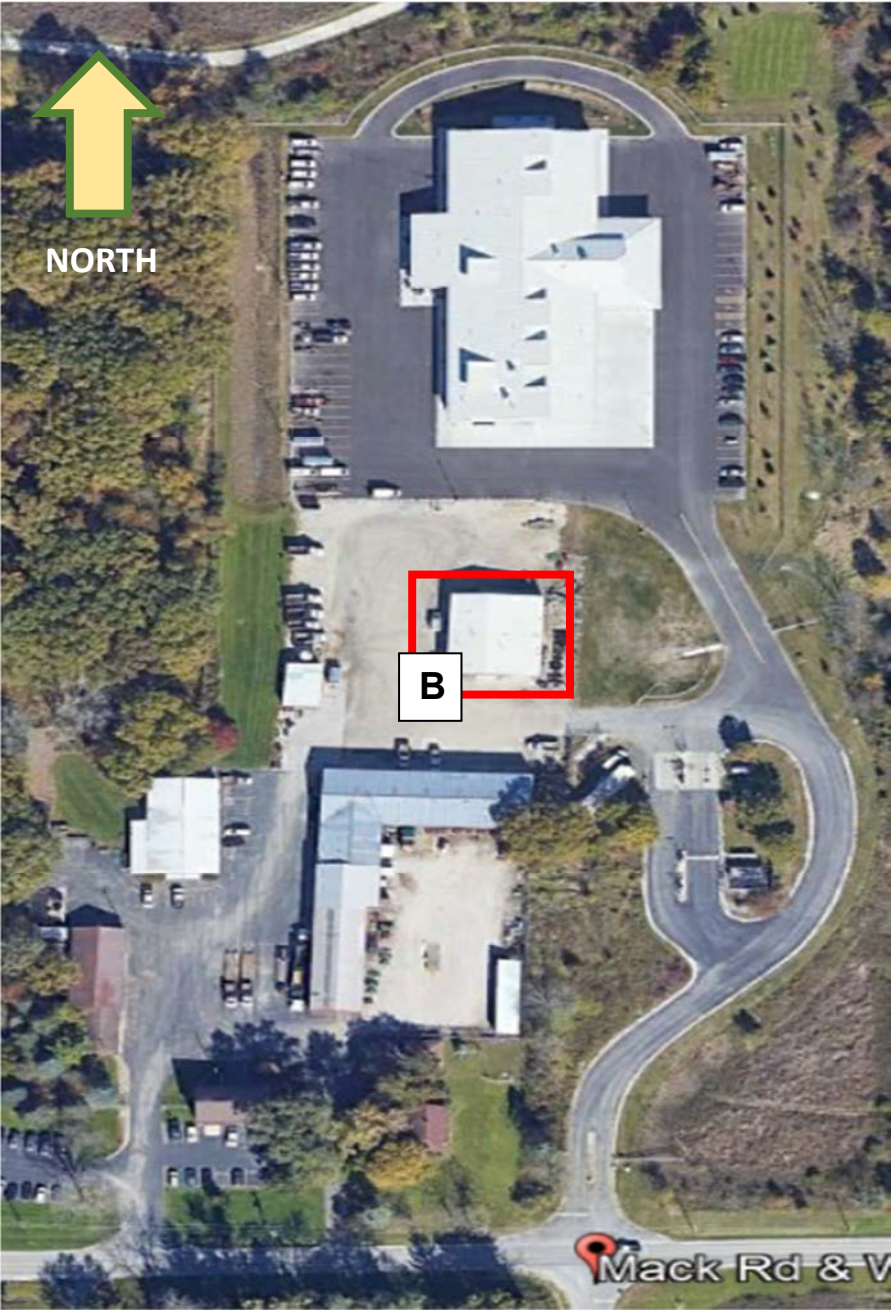


Photo 17 - Site Map



B: BW-026

Vehicle Wash & chemical Mixing Building

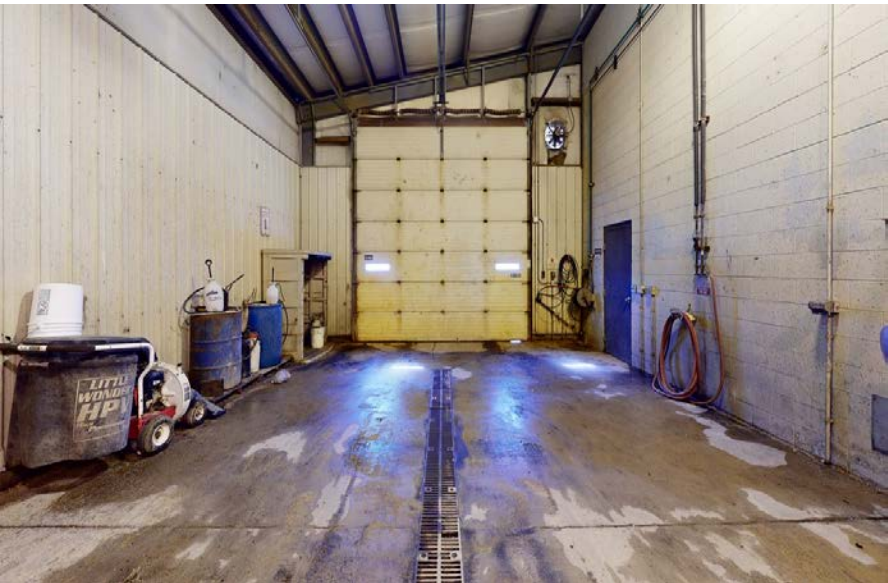


Photo 18 - Interior View Looking South in the East Bay



Photo 19 - Interior View Looking North in the West Bay



Photo 20 - interior View Looking North in East Bay



Photo 21 - Interior View of Pump Room

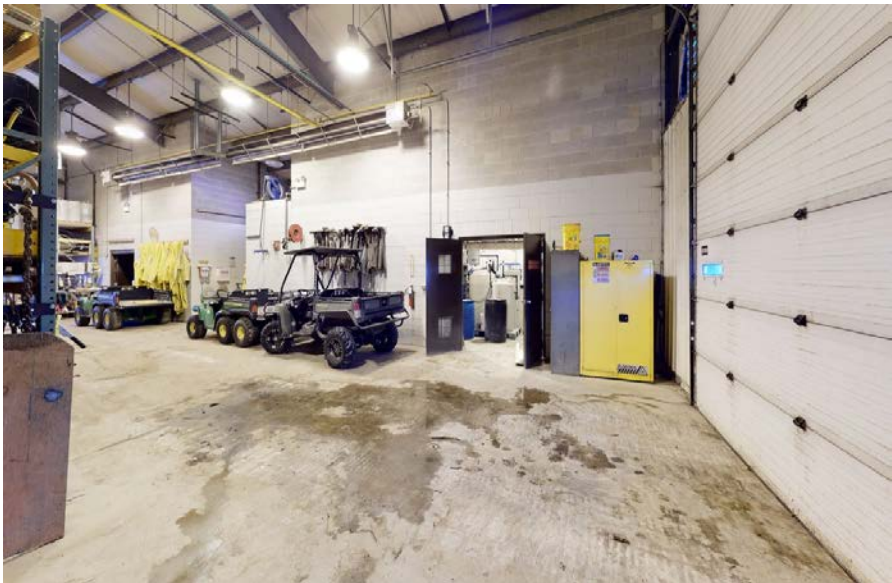


Photo 22 - Interior View Looking West at the North End of the West Bay



Photo 23 - Interior View Looking West at the South End of the West Bay



C: BW-003A, 003B

Equipment Storage Building

MATTERPORT SCANS: <https://my.matterport.com/show/?m=NVNRdd9pNNb>



Photo 24 - West Facade



Photo 25 - North Facade



Photo 26 - East Facade



Photo 27 - South Facade

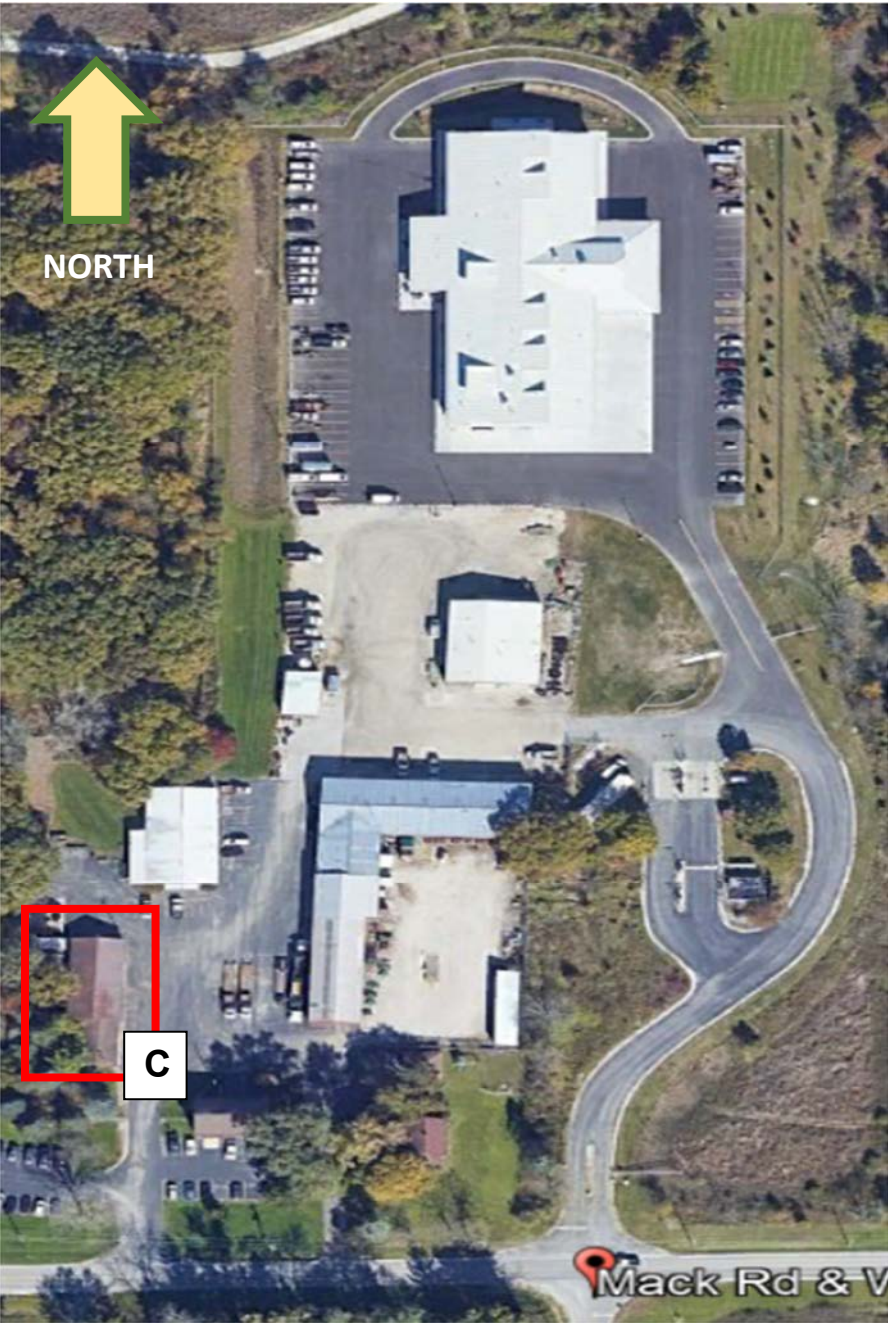


Photo 28 - Site Map



C: BW-003A, 003B

Equipment Storage Building



Photo 29 - Interior view Looking East in the South End of the Building



Photo 30 - Interior View Looking South in the North End of the Building



Photo 31 - Interior View Looking North in the North End of the Building



Photo 32 – Interior View Looking East in the North End of the Building



Photo 33 - Interior View Looking West in the South End of the Building

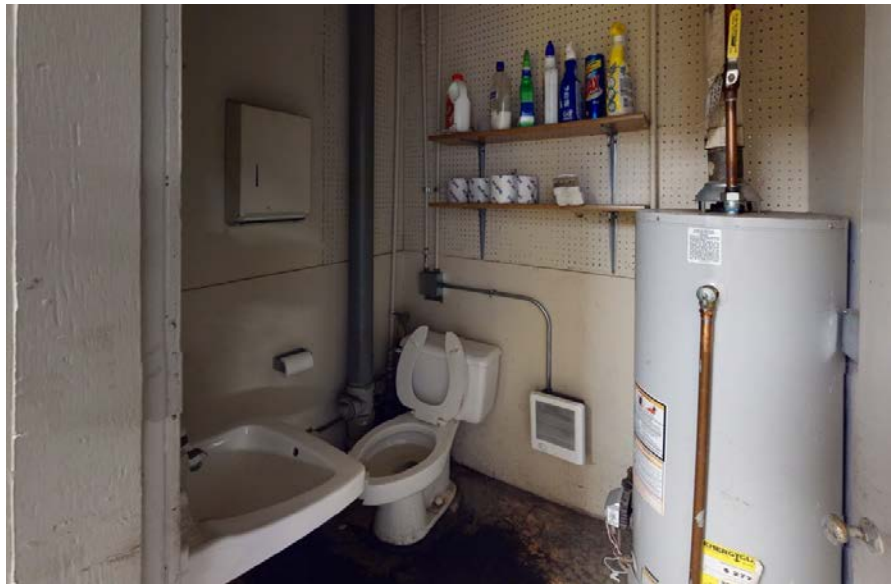


Photo 34 - Interior View of the Restroom



D: BW-003

Storage Building

MATTERPORT SCANS: <https://my.matterport.com/show/?m=X2UUUNvgwug>



Photo 35 - West Facade



Photo 36 - North facade



Photo 37 - East Facade



Photo 38 - South Facade



Photo 39 - Site Map



D: BW-003

Storage Building

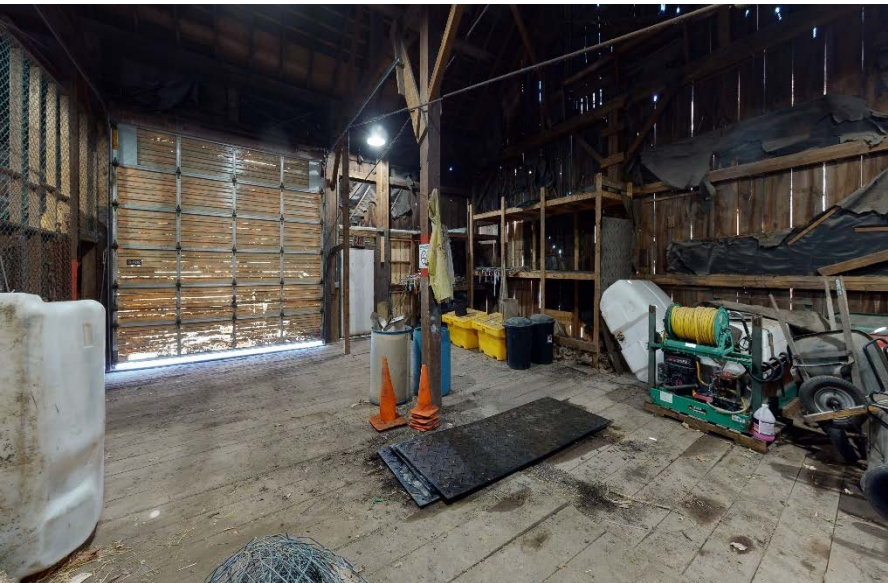


Photo 40 - Interior View Looking Northwest



Photo 41 - Interior View Looking East



Photo 42 - Interior View Looking Southwest



Photo 43 - Interior View in the Basement Looking West



Photo 44 - Interior View in the Basement Looking East



Photo 45 - Interior View in the Basement Looking Southwest



E: BW-020

Administrative Office Building

MATTERPORT SCANS: <https://my.matterport.com/show/?m=uEUaCHjoz8U>



Photo 46 - West Facade



Photo 47 - North Facade



Photo 48 - East Facade



Photo 49 - South Facade



Photo 50 - Site Map



E: BW-020

Administrative Office Building



Photo 51 - Interior View of Corridor Looking North



Photo 52 - Interior View of Conference Room Looking East



Photo 53 - Interior View of Office Space Looking West



Photo 54 - Interior View of Office Space Looking East



Photo 55 - Interior View of Men's Locker Room Looking West



Photo 56 - Interior View of Shower in Locker Room



F: 02-11555

Seed Processing Trailer



Photo 57 - View Looking Southwest



Photo 58 - View Looking Southeast



Photo 59 - Site Map



F: 02-11555

Seed Processing Trailer



Photo 60 - Interior View Looking South



Photo 61 - Interior View Looking Southeast



Photo 62 - Interior View Looking North

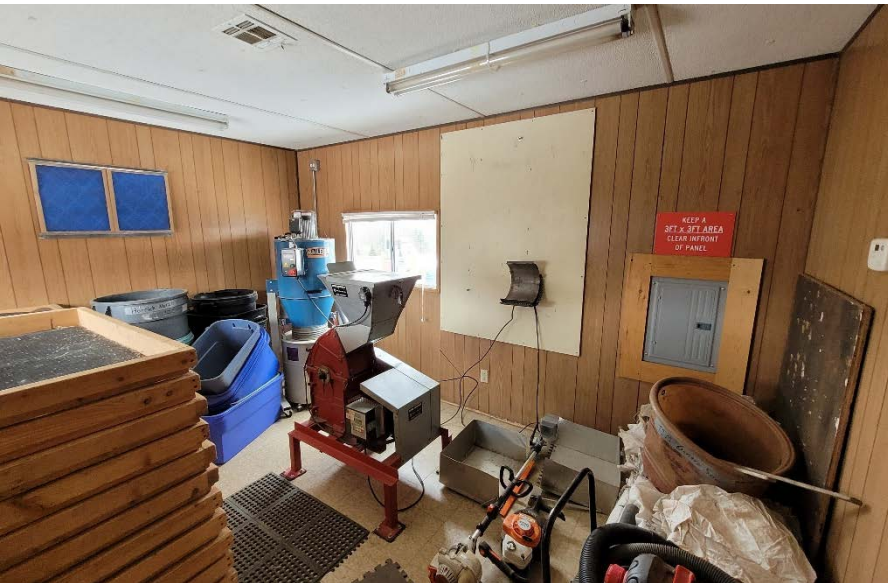


Photo 63 - Interior View Seed Separating Room



Photo 64 - Interior View of Seed Separating Room

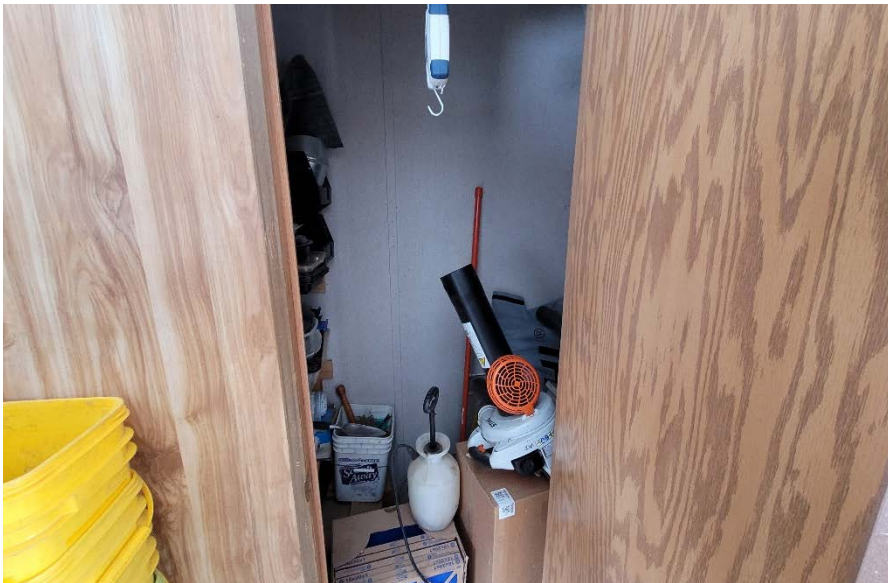


Photo 65 - Interior View of Storage Closet



G: 02-1722

Covered Storage Structure



Photo 66 - Northeast Facades



Photo 67 - South Facade

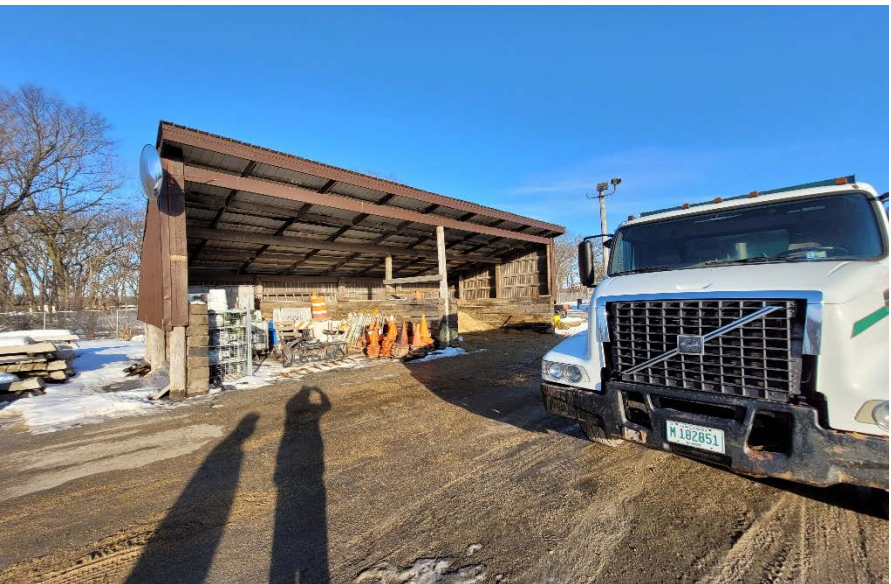


Photo 68 - East Facade



Photo 69 - Southeast Facades



Photo 70 - Site Map



H: BW-022

Facilities Management Building



Photo 71 - West Facade



Photo 72 - North Facade



Photo 73 - South Facade Looking at the West End of the Building



Photo 74 - South Facade Looking at the East End of the Building



Photo 75 - Site Map



H: BW-022

Facilities Management Building

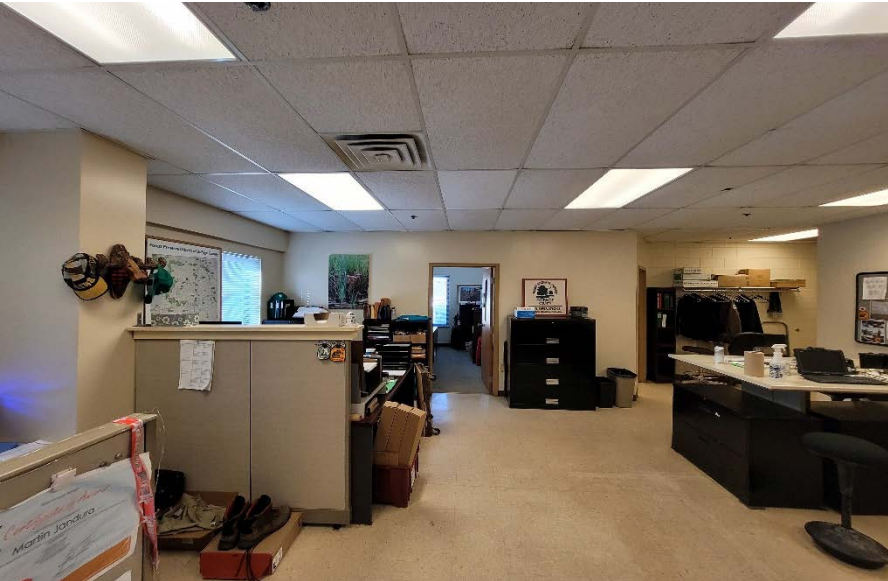


Photo 76 - Interior View of General Office



Photo 77 - Interior View of General Office



Photo 78 - Interior View of Private Office



Photo 79 - Interior View of Private Office



Photo 80 - Interior View of General Office



Photo 81 - Interior View of General Office



Blackwell Site Ops (West Ranger Station) - 28W260 Purnell Rd.

A: BW-007F

Covered Storage Structure

MATTERPORT SCANS: <https://my.matterport.com/show/?m=YeqCxFbb6eo>



Photo 82 - North Facade



Photo 83 - Northeast Facade



Photo 84 - Interior View Looking South



Photo 85 - Interior View Looking North



Photo 86 - Site Map



B: BW-007G

Storage Building

MATTERPORT SCANS: <https://my.matterport.com/show/?m=Uac4Wnm7D78>



Photo 87 - Northwest Facade



Photo 88 - Northeast Facade



Photo 89 - Site Map

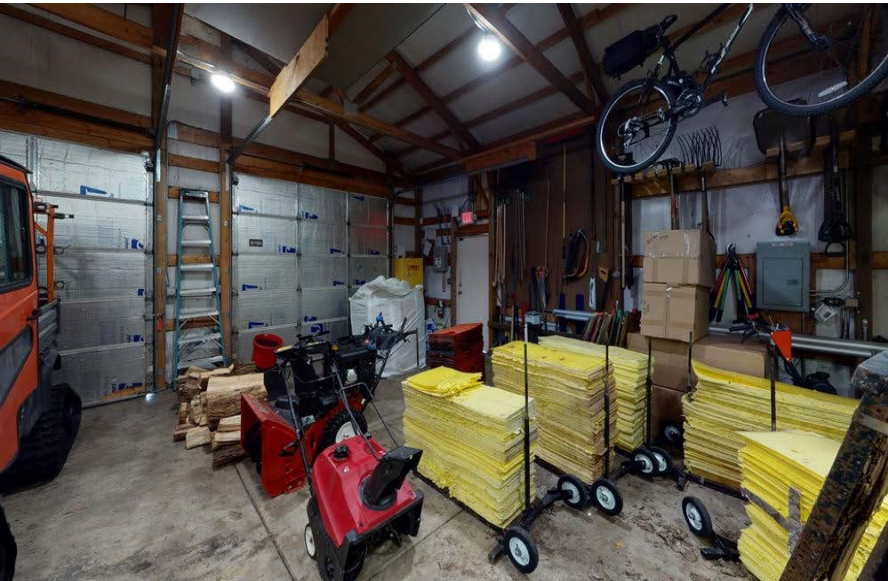


Photo 90 - Interior View Looking Northeast

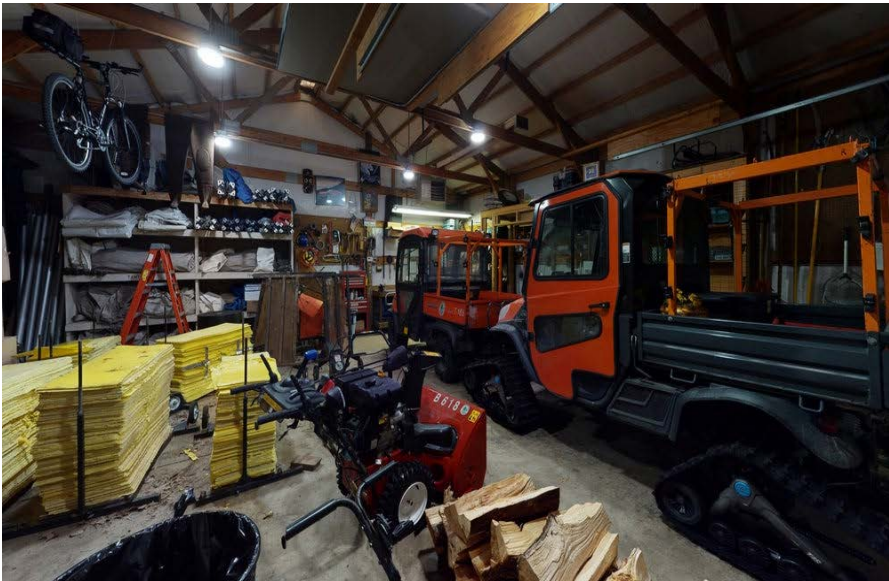


Photo 91 - Interior View Looking South



Photo 92 - Interior View Looking Southwest



C: BW-007

Office & Storage Building

MATTERPORT SCANS: <https://my.matterport.com/show/?m=fmtxqCs9ZGm>



Photo 93 - Northwest Facades



Photo 94 - Northeast Facades



Photo 95 - Site Map



Photo 96 - Southwest Facades



Photo 97 - Northeast Facades



Photo 98 - North Facade



C: BW-007

Office & Storage Building



Photo 99 - Interior View of Vehicle Bays



Photo 100 - Interior View of Vehicle Bays



Photo 101 - Interior View of Vehicle Bays



Photo 102 - Interior View of Office



Photo 103 - Interior View of Locker & Mechanical Room



Photo 104 - Interior View of Locker & Break Room



East Branch (Schwarz Barn) - 21W761 W. Army Trail Rd.

A: 08-8978

Storage Building

MATTERPORT SCANS: <https://my.matterport.com/show/?m=PCWw25mPDCw>



Photo 105 - East Facade



Photo 106 - North Facade at East End of the Building



Photo 107 - South Facade Looking East



Photo 108 - North Facade at West End of the Building



Photo 109 - Site Map



A: 08-8978

Storage Building

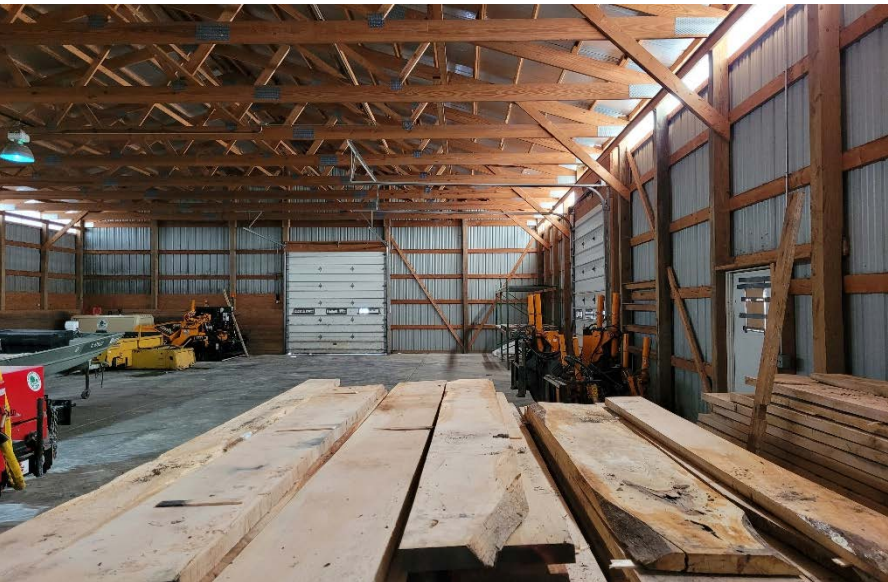


Photo 110 - Interior View Looking East

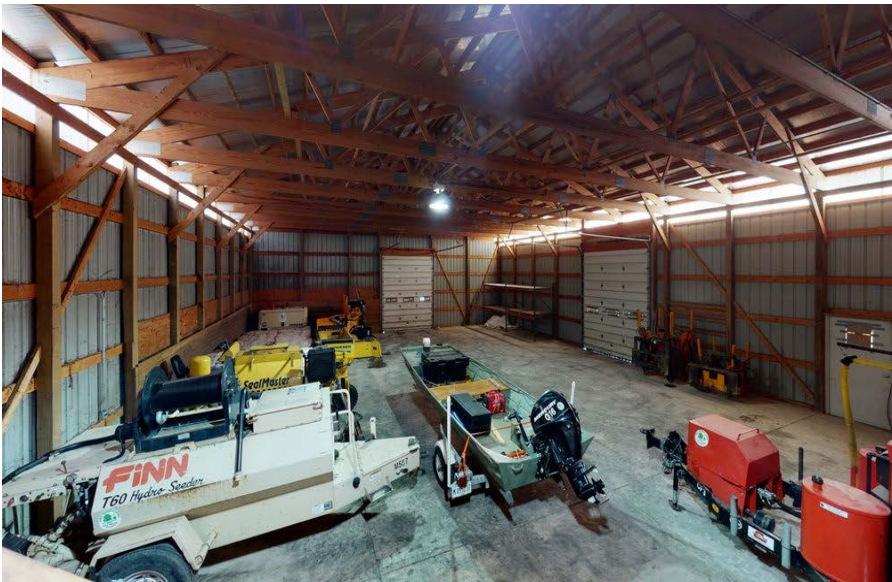


Photo 111 - Interior View Looking East



Photo 112 - Interior View of the Mezzanine Storage Looking West



Photo 113 - Interior View of Office



Photo 114 - Interior View of Looking North



Photo 115 - Interior View Looking North at the West End of the Building



Waterfall Glen (Natural Resources Program Support) – 10S273 Argonne Ridge Rd.

A: WFG-008, B: WFG-007

Processinge Building & Office Building



Photo 116 - WFG-008 East Facade



Photo 117 - WFG-008 South Facade



Photo 118 - WFG-007 East Facade



Photo 119 - WFG-007 North Facade



Photo 120 - Site Map



A: WFG-008

Processing Building

MATTERPORT SCANS: <https://my.matterport.com/show/?m=dxro7rAELeY>



Photo 121 - Interior View Looking South in the Clean-up Room



Photo 122 - Interior View Looking South in the Processing Room



Photo 123 - Interior View Looking East in the Processing Room



Photo 124 - Interior View in Walk-in Cooler



Photo 125 -Interior View Looking North in Clean-up Room



Photo 126 - Interior View Looking North in the Processing Room



B: WFG-007

Office Building

MATTERPORT SCANS: <https://my.matterport.com/show/?m=SxuHjHx5gt3>



Photo 127 - Interior View Looking South in Kitchenette



Photo 128 - Interior View of Mechanical Room



Photo 129 - Interior View Looking West in the General Office Space



Photo 130 - Interior View of Washroom & Shower Accommodations



Photo 131 - Interior View Looking West in the Storage Room



Photo 132 - Interior View Looking North in the General Office Space



Greene Valley (Barn) – 8S350 Whittington Ct.

A: GV-010

Processinge Building & Office Building

MATTERPORT SCANS: <https://my.matterport.com/show/?m=dDPPdg4sLgZ>



Photo 133 - Northeast Facades



Photo 134 - North Facade



Photo 135 - West Facade



Photo 136 - Northwest Facades



Photo 137 - Site Map



A: GV-010

Processinge Building & Office Building

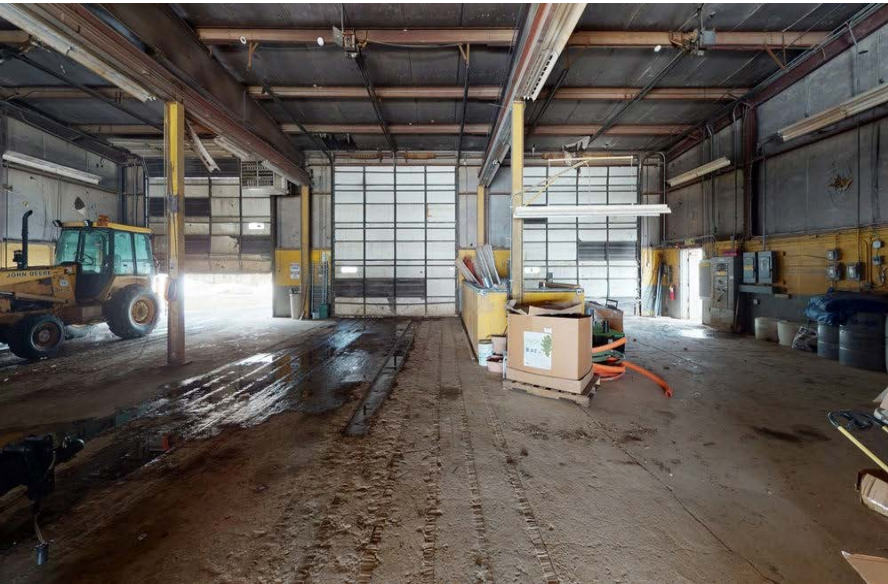


Photo 138 - Interior View Looking North



Photo 139 - Interior View Looking South



Photo 140 - Interior View Looking South Under the Mezzanine



Photo 141 - Interior View Looking South at the Mezzanine



Photo 142 - Interior View Looking Northeast

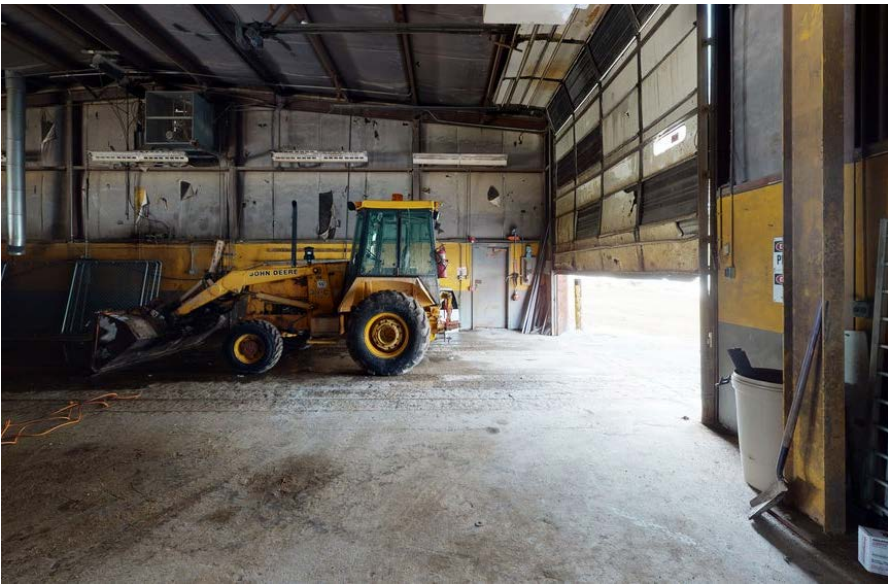


Photo 143 - Interior View looking West



Churchill Woods (East Ranger Station) – 21W242 St. Charles Rd.

A: CH-006, B: Ch-006A, C: CH-009, D: CH-005, E: CH-010

Office Building, Shop & Storage Buildings



Photo 144 - CH-006 North Facade



Photo 145 - CH-006 South Facade

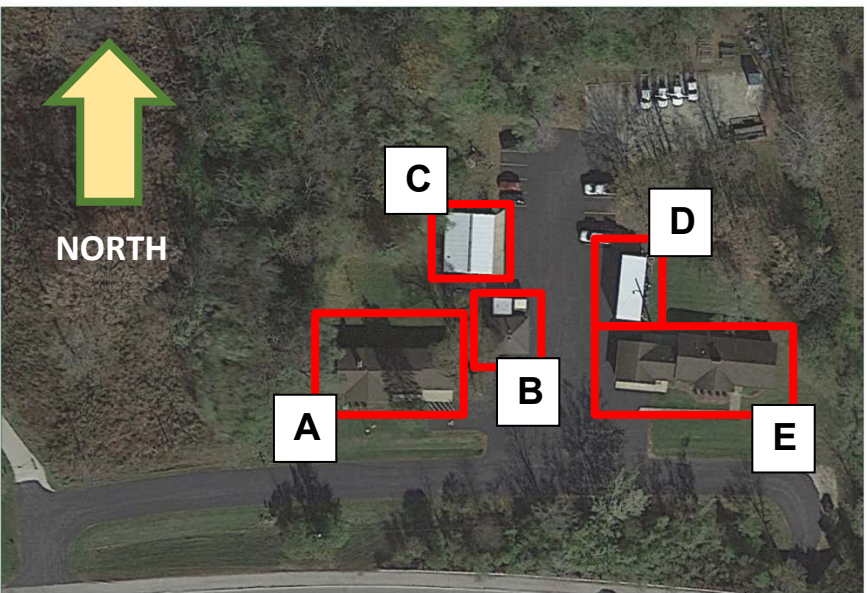


Photo 146 - Site Map



Photo 147 - CH-009 East Facade



Photo 148 - CH-006A East Facade



Photo 149 - CH-005 West Facade



A: CH-006, B: Ch-006A, C: CH-009, D: CH-005, E: CH-010

Office Building, Shop & Storage Buildings



Photo 150 – CH-006 Interior View of General Office Space



Photo 151 – CH-006 Interior View of General Office Space



Photo 152 – CH-006 Interior View of Meeting Room



Photo 153 – CH-006 Interior View of Basement Storage



Photo 154 - CH-006 Interior View of Basement Laundry, Storage & Mechanical Space



Photo 155 - CH-006 Interior View of Basement Laundry, Storage & Mechanical Space



A: CH-006, B: Ch-006A, C: CH-009, D: CH-005, E: CH-010

Office Building, Shop & Storage Buildings



Photo 156 - CH-010 Interior View of Basement Storage



Photo 157 - CH-010 Interior View of Basement Storage



Photo 158 - CH-010 Interior View of Shop Area



Photo 159 - CH-006A Interior View Looking South

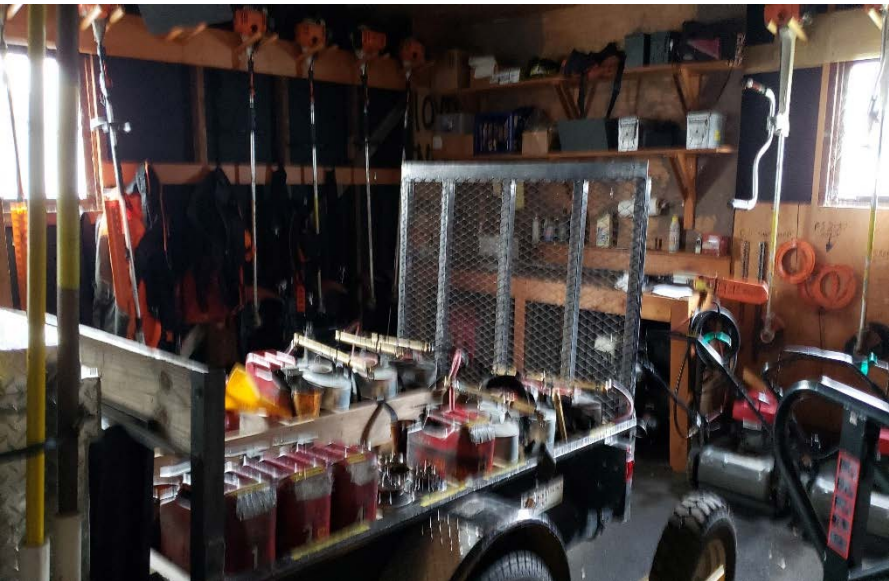


Photo 160 - CH-009 Interior View Looking Northwest



Photo 161 - CH-009 Interior View Looking West



DuPage County Public Works – 7099 IL-53, Woodridge, Illinois

Available Land for a Building Supporting Deer & Seed Processing



Photo 162 - View Looking East at South End of Property



Photo 163 - View Looking South at South End of Property



Photo 164 - View Looking North at Access to Available Land



Photo 165 - Site Map