

Ordinance
#21-321

**FOREST PRESERVE DISTRICT OF DUPAGE
COUNTY REDISTRICTING ORDINANCE OF 2021**

WHEREAS, the Forest Preserve District of DuPage County (the "District") is a unit of government created by Illinois law, 70 ILCS 805/1 *et seq.*; and

WHEREAS, Section 3c of the Downstate Forest Preserve District Act, 70 ILCS 805/3c provides that forest preserve districts in counties with populations of more than 800,000 but fewer than 3,000,000 and having co-extensive boundaries with the boundaries of such counties, are governed by an elected board of commissioners; and

WHEREAS, the District is to be redistricted in the manner provided in Division 2-3 of the Counties Code; and

WHEREAS, the District has six (6) legislative districts; and

WHEREAS, in order to ensure that the legislative maps are reapportioned in a fair and equitable manner, the Board began its process to draft a proposed redistricting plan for all six (6) districts (the "Proposed Plan"); and

WHEREAS, after the Proposed Plan was drafted, the President of the Board presented the Proposed Plan to the Board on October 13, 2021; and

WHEREAS, on October 26, 2021, a duly noticed public hearing was held regarding the Proposed Plan and the opportunity for public comment and testimony was given and public comment and testimony was made; and

WHEREAS, the 2020 decennial census (the "Census") revealed that the population of DuPage County is 932,877; and

WHEREAS, the Proposed Plan apportions the population of the legislative districts as follows:

District 1	155,460
District 2	155,484
District 3	155,530
District 4	155,342
District 5	155,555
District 6	155,506

WHEREAS, under the Proposed Plan, each district's population is within a deviation of less than 0.1% from the exact population mean; and

WHEREAS, in enacting the Redistricting Plan set forth in Section 3 and Appendix 1 hereof, the following redistricting principles were taken into account:

- (1) Each of the districts was drawn to be substantially equal in population; and

- (2) Each of the districts has been compromised of contiguous territory; and
- (3) Township and municipal boundaries have been respected; and
- (4) Precincts have only been divided only when practicable; and
- (5) Each of the districts was drawn to be consistent with the United States Constitution, the federal Voting Rights Act, and the Illinois Voting Rights Act of 2011; and
- (6) Each of the districts was drawn to reflect a balance of the following redistricting principles: the preservation of the core or boundaries of the existing districts; the preservation of communities of interest; respect for township, municipal, ward, and other political subdivision boundaries; the maintenance of incumbent-constituent relationships and tracking of population migration; proposals or other input submitted by the Commissioners of the Board and members of the public; public hearing testimony; respect for geographic features and natural or logistical boundaries; and other redistricting principles recognized by state and federal law.

NOW, THEREFORE, BE IT ORDAINED by the President and the Commissioners of the Forest Preserve District of DuPage County that the Forest Preserve District of DuPage County Redistricting Ordinance of 2021 is hereby enacted as follows:

Section 1. This Ordinance shall be known as and may be cited as the Forest Preserve District of DuPage County Redistricting Ordinance of 2021.

Section 2. The Board of Commissioners of the Forest Preserve District of DuPage County finds that all of the recitals contained in the preambles to this Ordinance are full, true and correct and incorporate them into this Ordinance by this reference.

Section 3. The Board hereby adopts and approves the Redistricting Plan, which includes the Proposed Map of the full District, a copy of which is attached hereto and incorporated herein as Exhibit A, the individual proposed district level maps, copies of which are attached hereto and incorporated herein, and Appendix 1 (the census block delineation of each district) which is also attached hereto and incorporated herein and considers the Proposed Map to be part of the Redistricting Plan. Forest Preserve District of DuPage County Districts 1 through 6 shall be comprised as shown in the Proposed Map in Exhibit A and Group Exhibit B and as stated in Appendix 1 of this Ordinance.

Section 4.

(a) For purposes of this Ordinance, the districts described in Section 3, Appendix 1 shall be composed of the townships stated therein and where the entire township is not included in the specific district described, precincts stated therein and where the entire precinct is not included in the specific district described, the United States census geography (blocks), as defined by the GeoID contained within the 2020 version of the "TIGER" files from the United States Census Bureau was used to reference the portion of the precincts that are included in the District.

References to “block,” “blocks,” or “block groups” refer to those demographic units as established by the United States Census Bureau for the 2020 census as described by maps and publications of the Bureau.

(b) In the block listing noted in Appendix 1, the first two digits of a census description shall refer to the State of Illinois (17). The next three digits of a census description shall refer to DuPage County, which is code 043. The next six digits refer to the census tract within DuPage County. The last four digits refer to the census block within the census tract. Each District is separated by a header at the start of the District description.

(c) Any reference to a “township” shall refer to the boundaries or limits of a particular township as defined by the 2020 version of the “TIGER” files from the United States Census Bureau. “TIGER” is an acronym for the computer readable geographic data base that automates the mapping and related geographic activities required to support the United States’ Census Bureau’s census and survey programs and stands for “Topologically Integrated Geographic Encoding and Referencing.”

(d) In the event of a discrepancy between the listing of blocks set forth above and any other boundary description or map, the listing of blocks set forth in Section 3, Appendix 1 shall take precedence and be controlling.

Section 5.

(a) The Forest Preserve District of DuPage County Redistricting Plan specified in Section 3, Appendix 1 of this Forest Preserve District of DuPage County Redistricting Ordinance of 2021 shall become effective upon approval and adoption of this Ordinance and the Commissioners of the Board shall be nominated and elected in 2022 by the legal voters of each legislative district of the District as set forth and specified in this Ordinance, subject to the following limitations:

- (1) Any Commissioner of the Board elected in 2018 or appointed to fill a vacancy in office occurring subsequent to the 2018 general election but prior to the November 2022 general election shall, until his or her term is completed and his or her successor is elected and qualified in 2022, continue to represent and serve the residents and legal voters of the District from which he or she was elected or appointed as such District existed as of the 2018 general election; and
- (2) Any vacancy in the office of Commissioner of the Board occurring on or after the approval and adoption of this Ordinance and prior to the November 2022 general election shall be filled as provided by law.

(b) Any vacancy in nomination for the office of Commissioner of the Board occurring on or after the general primary election in 2022 shall be filled as provided by law.

Section 6: Effective date. This Ordinance shall be in effect immediately upon adoption.

(The remainder of this page was intentionally left blank.)

ADOPTED this 2nd day of November, 2021, pursuant to a roll call vote as follows:

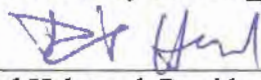
AYES: 4

NAYS: 3

ABSENT: 0

ABSTENTION: 0

APPROVED by me this 2nd day of November, 2021.



Daniel Hebreard, President

ATTESTED AND FILED in my
office this 2nd day of November, 2021.



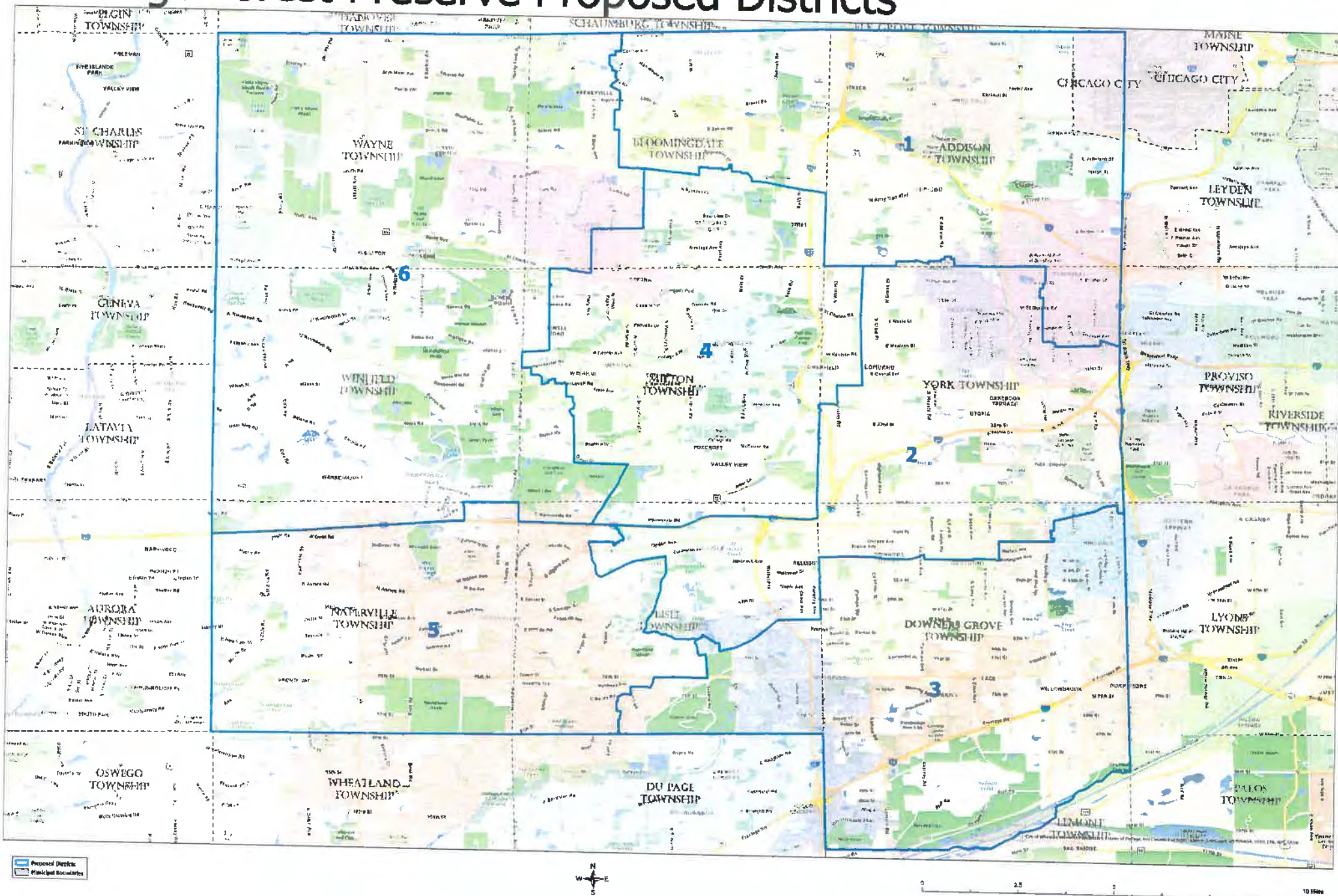
Judith A. Malahy, Secretary

EXHIBIT A

(Proposed County of DuPage Forest Preserve District Map)

•

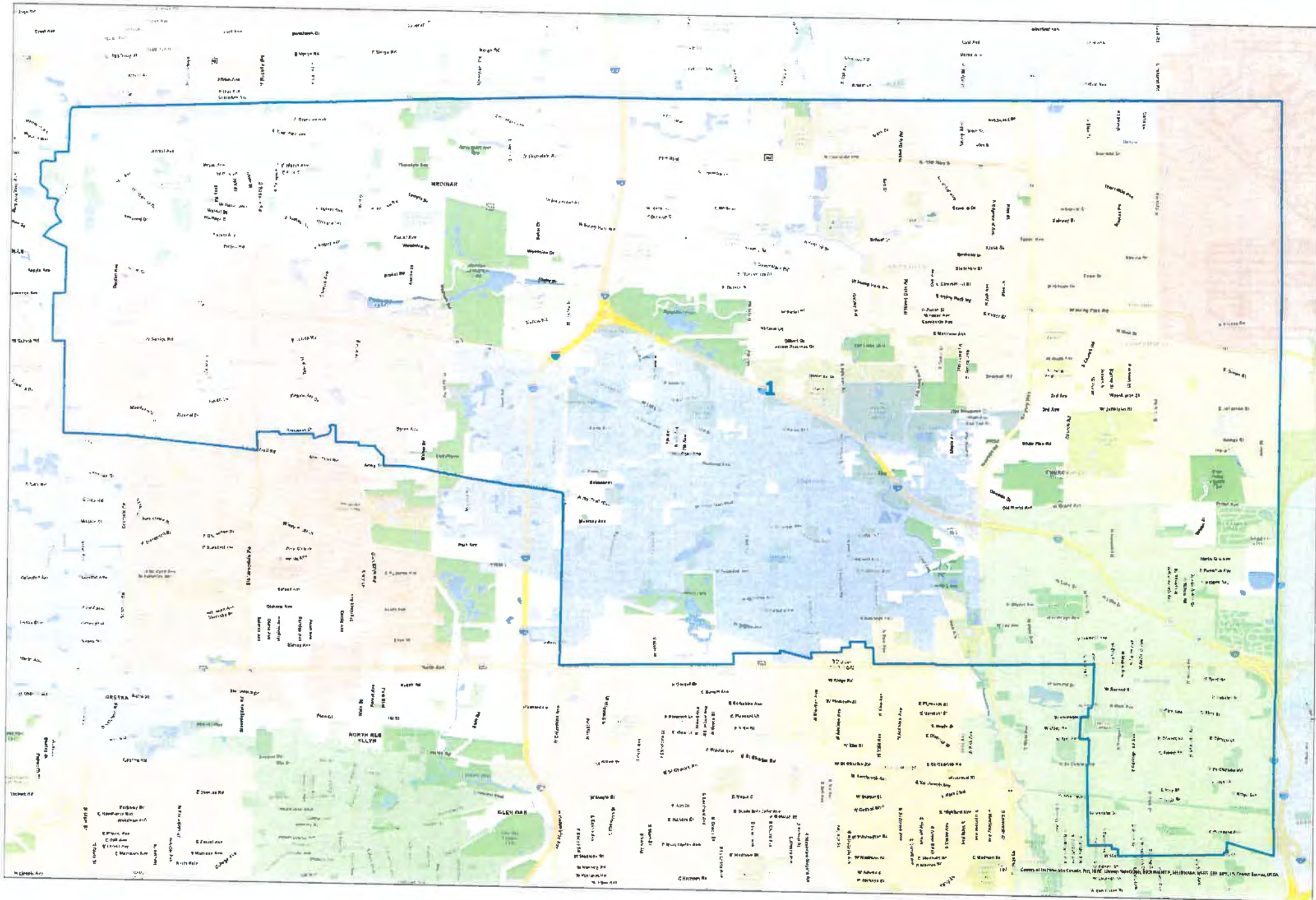
DuPage Forest Preserve Proposed Districts



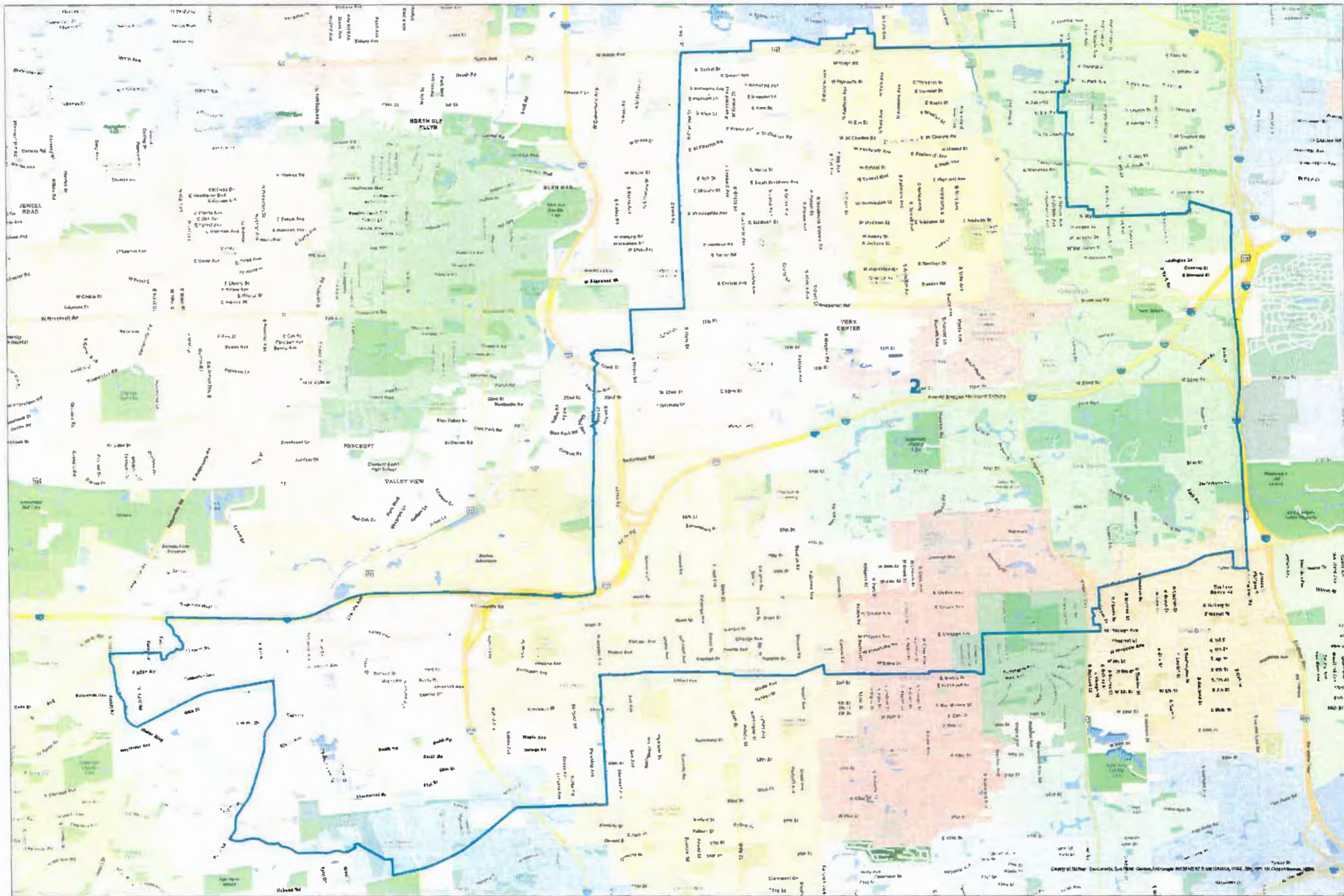
GROUP EXHIBIT B

(Proposed County of DuPage Forest Preserve District Map --
Separate District Maps for Districts 1 through 6)

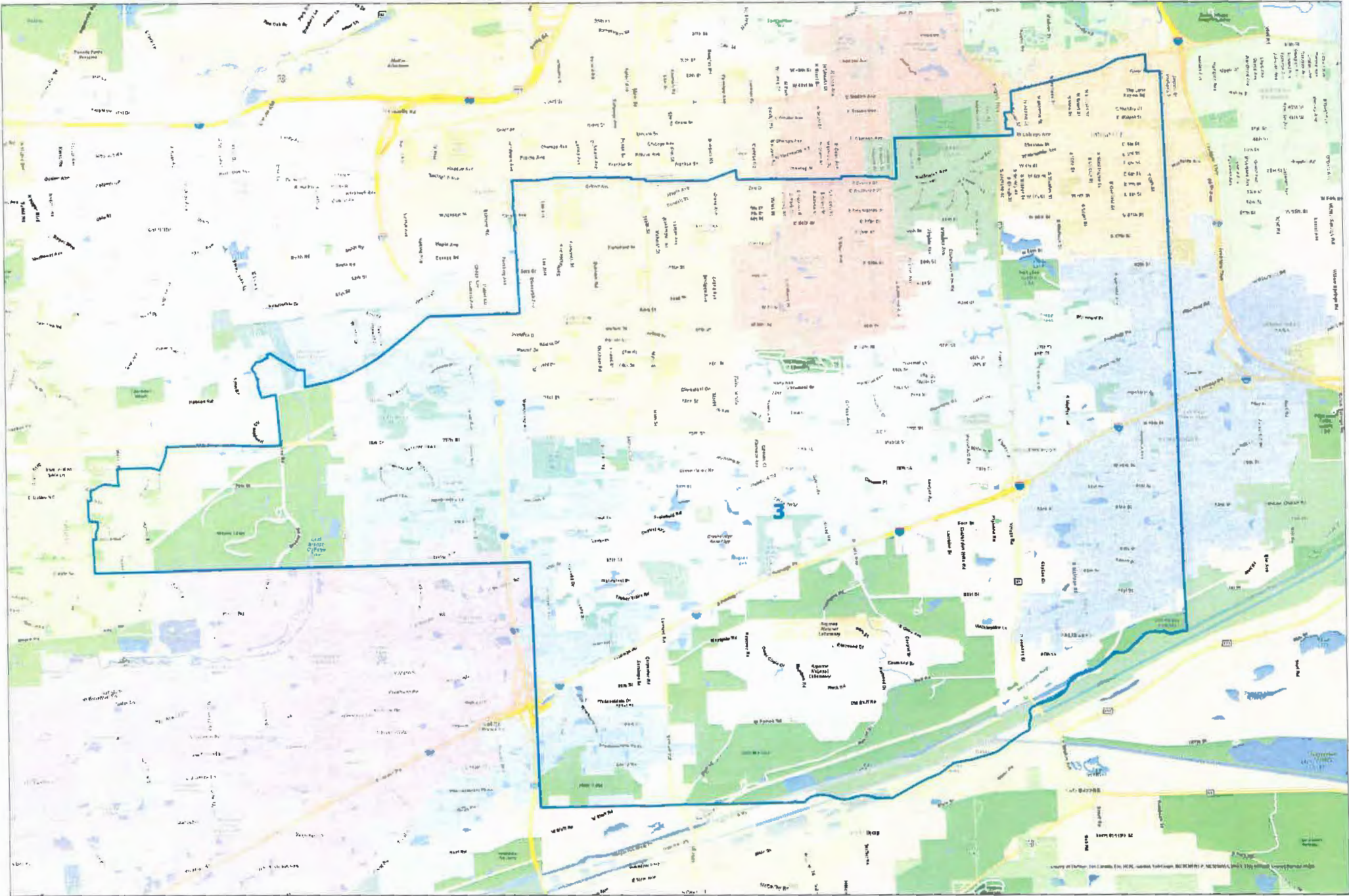
DuPage Forest Preserve District 1



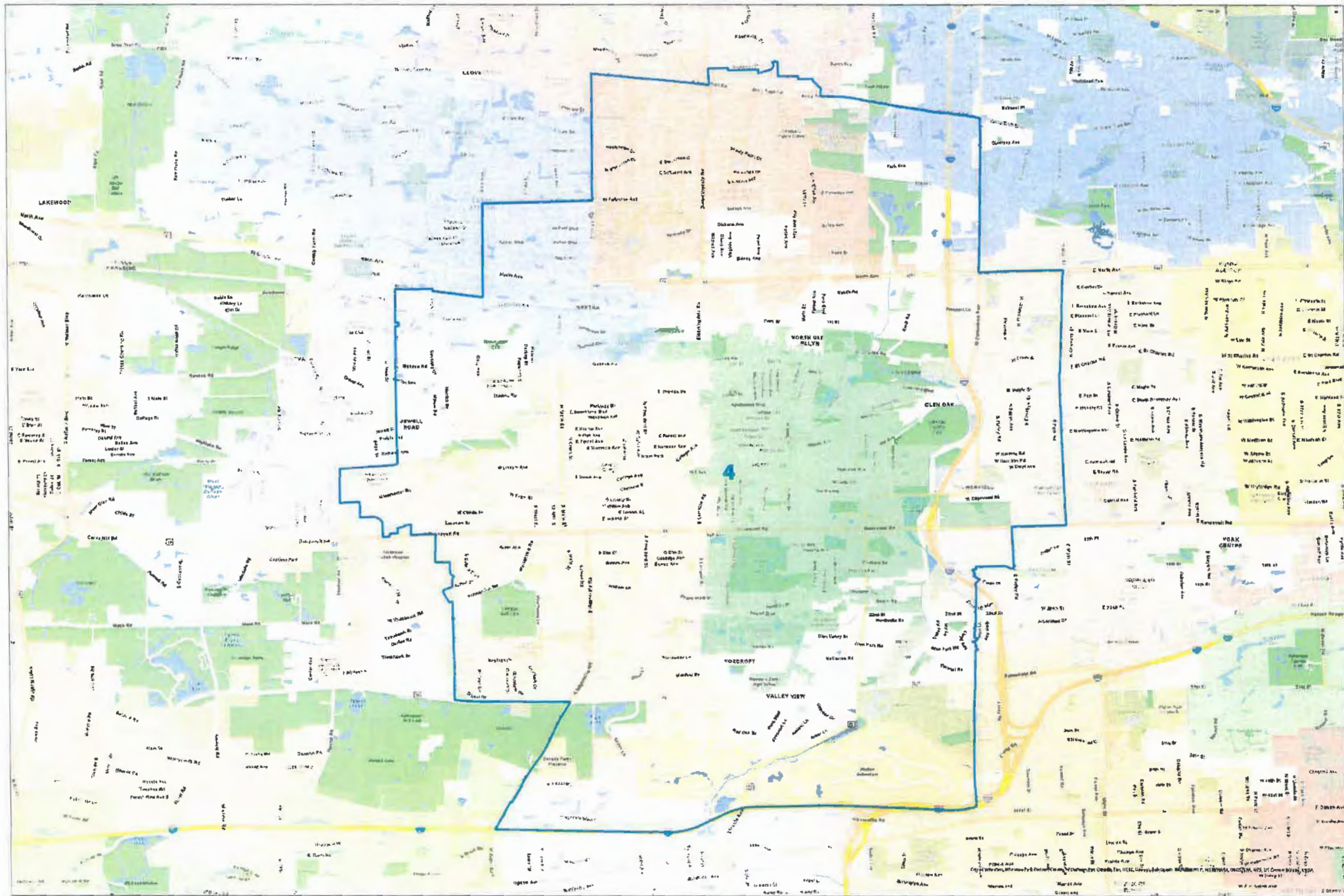
DuPage Forest Preserve District 2



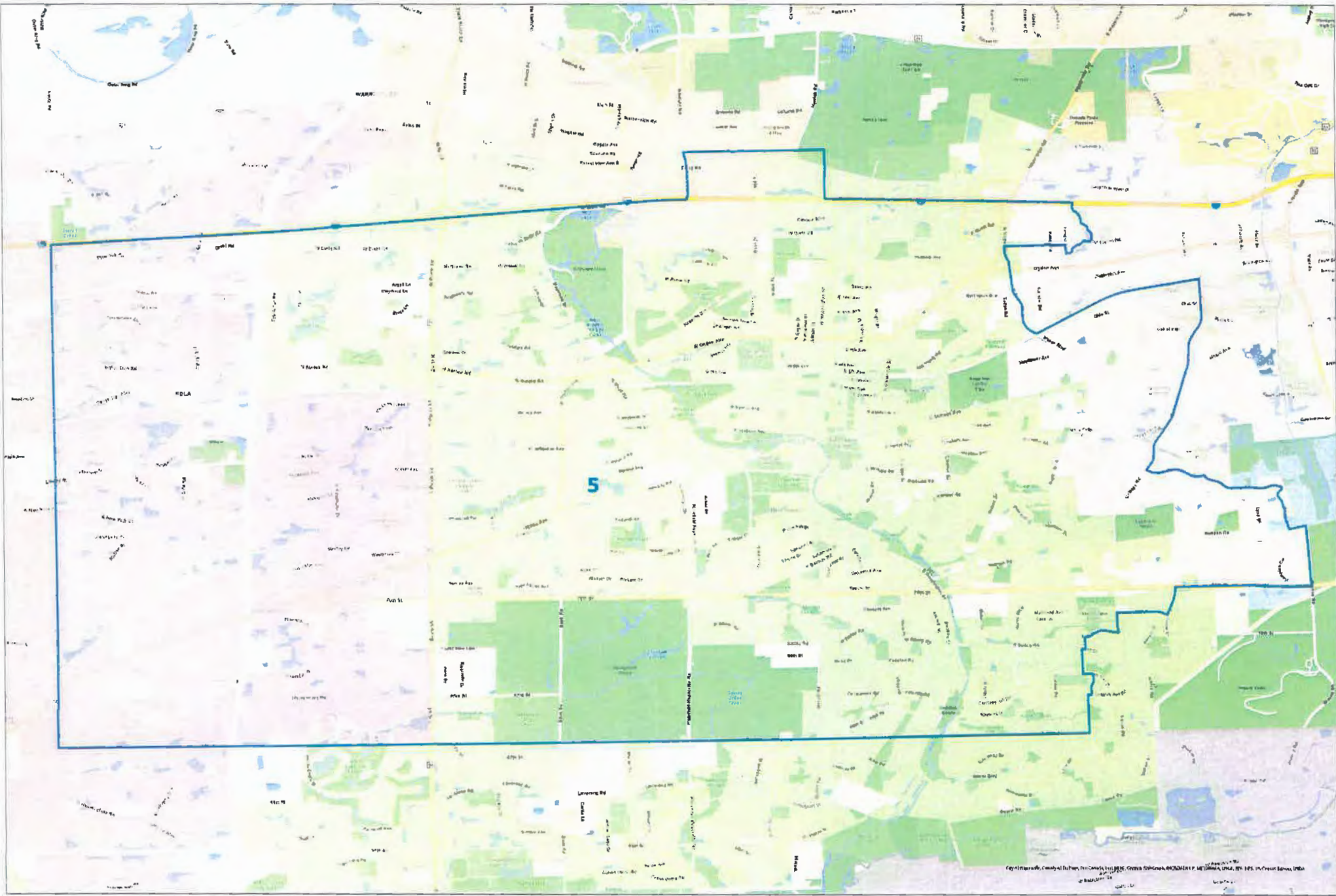
DuPage Forest Preserve District 3



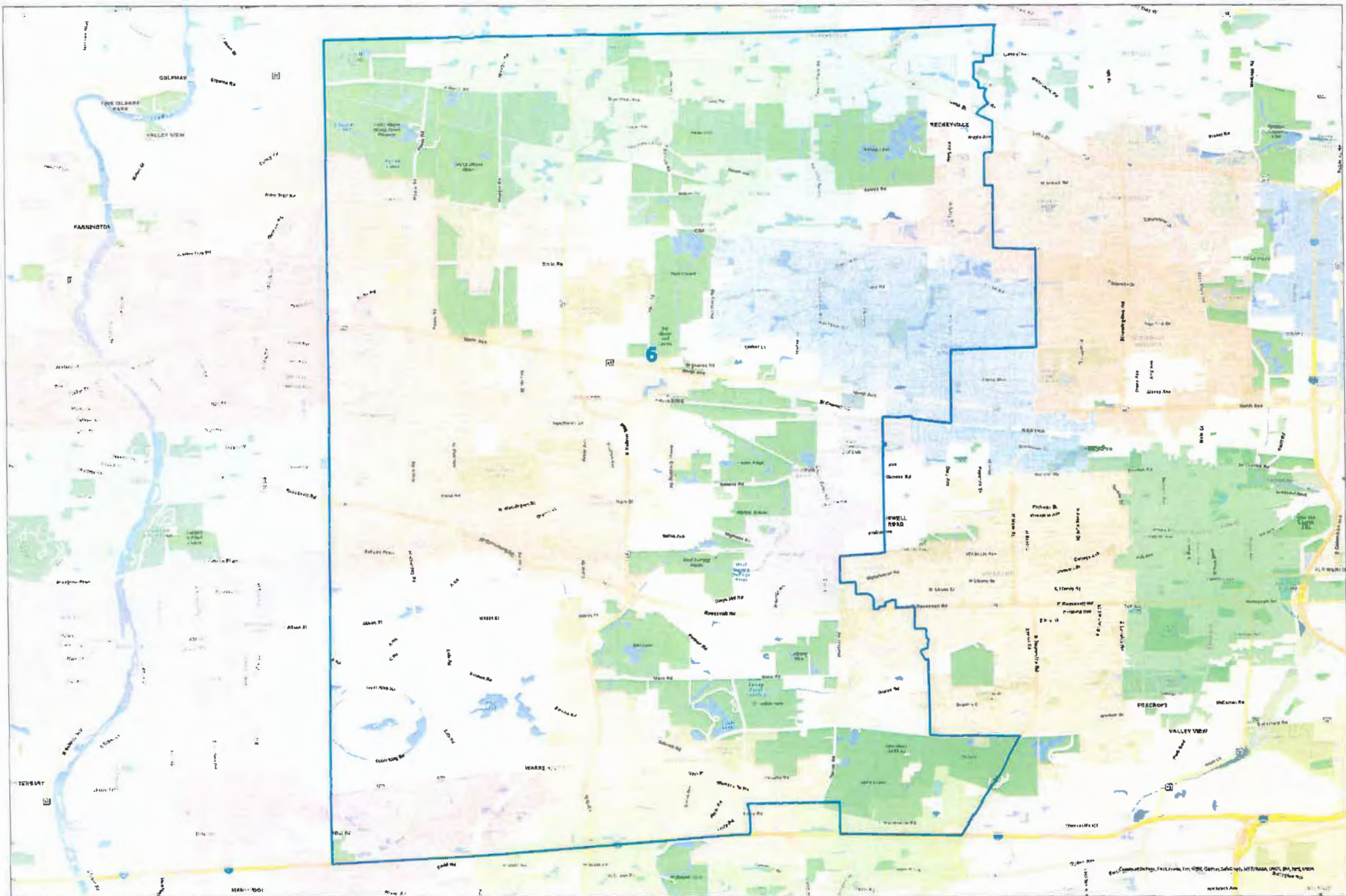
DuPage Forest Preserve District 4



DuPage Forest Preserve District 5



DuPage Forest Preserve District 6



APPENDIX 1

District 1

In Township: Addison, VOTING PRECINCTS:

Addison 1, Addison 2, Addison 3, Addison 4, Addison 5, Addison 6, Addison 7, Addison 8, Addison 9, Addison 11, Addison 12, Addison 13, Addison 14, Addison 15, Addison 16, Addison 17, Addison 18, Addison 19, Addison 20, Addison 21, Addison 22, Addison 23, Addison 24, Addison 25, Addison 26, Addison 27, Addison 28, Addison 29, Addison 30, Addison 31, Addison 32, Addison 33, Addison 34, Addison 36, Addison 37, Addison 38, Addison 39, Addison 40, Addison 41, Addison 42, Addison 43, Addison 44, Addison 45, Addison 46, Addison 47, Addison 48, Addison 49, Addison 50, Addison 51, Addison 52, Addison 53, Addison 54, Addison 55, Addison 57, Addison 58, Addison 59, Addison 60, Addison 61, Addison 62, Addison 63, Addison 64, Addison 65, Addison 66, Addison 68, Addison 69

In Township: Bloomingdale, VOTING PRECINCTS:

Bloomingdale 1, Bloomingdale 2, Bloomingdale 3, Bloomingdale 5, Bloomingdale 7, Bloomingdale 8, Bloomingdale 10, Bloomingdale 11, Bloomingdale 12, Bloomingdale 13, Bloomingdale 17, Bloomingdale 19, Bloomingdale 20, Bloomingdale 24, Bloomingdale 29, Bloomingdale 30, Bloomingdale 31, Bloomingdale 32, Bloomingdale 33, Bloomingdale 34, Bloomingdale 35, Bloomingdale 36, Bloomingdale 39, Bloomingdale 41, Bloomingdale 44, Bloomingdale 46, Bloomingdale 49, Bloomingdale 54, Bloomingdale 55, Bloomingdale 56, Bloomingdale 61, Bloomingdale 62, Bloomingdale 66, Bloomingdale 70, Bloomingdale 71, Bloomingdale 75, Bloomingdale 78, Bloomingdale 79, Bloomingdale 86, Bloomingdale 90, Bloomingdale 92, Bloomingdale 93, Bloomingdale 96, Bloomingdale 98, Bloomingdale 99, Bloomingdale 101, Bloomingdale 102

In Township: York, VOTING PRECINCTS:

York 1, York 2, York 4, York 6, York 7, York 8, York 15, York 23, York 28, York 34, York 40, York 41, York 53, York 61, York 70, York 85, York 99, York 133

In Voting Precinct: Addison 10, BLOCKS:

170438400001000, 170438400001001, 170438400001002, 170438400001011, 170438400001012, 170438400002003, 170438400002004, 170438400002005, 170438400002006, 170438400002007, 170438400002008, 170438400002009, 170438400002010, 170438400002011, 170438400002012, 170438400002013, 170438400002014, 170438400002015, 170438400002016, 170438400002017, 170438400002023, 170438400002024, 170438400002025, 170438400002026, 170438400002027, 170438400002028, 170438400002029, 170438400002030, 170438400002031, 170438400002032, 170438400002033, 170438400002034, 170438400002035, 170438400002036, 170438400002037, 170438400002040, 170438400002042, 170438400002043, 170438400002044, 170438401013004, 170438401013005, 170438408012000, 170438408023000, 170438408023001, 170438408023002, 170438408023003, 170438408023004, 170438408023005,

170438408023006, 170438408023007, 170438408023008, 170438408023009,
170438408023010, 170438408023011, 170438408023012, 170438408023013,
170438408023014

In Voting Precinct: Addison 35,
BLOCKS:

170438406003010, 170438406003011, 170438406003012, 170438406003013,
170438406003027, 170438406003028, 170438406003029, 170438406003030,
170438406003031, 170438406003032, 170438406003033, 170438406003034,
170438406003035, 170438406003036, 170438467011001, 170438467011047,
170438467011048, 170438467011049, 170438467022000, 170438467022001,
170438467022002, 170438467022003, 170438467022004, 170438467022008,
170438467022009, 170438467022010, 170438467022011, 170438467022012,
170438467022013, 170438467022014, 170438467022015, 170438467022016,
170438467022017, 170438467022018, 170438467022019, 170438467022020,
170438467022021, 170438467022022, 170438467022023, 170438467022024,
170438467022025, 170438467022026, 170438467022027, 170438467022028,
170438467022029, 170438467022030, 170438467022031, 170438467022048,
170438467022049, 170438467022052, 170438467022053, 170438467022055,
170438467022057, 170438467023010, 170438467023011, 170438467023012

In Voting Precinct: Addison 56,
BLOCKS:

170438467012006, 170438467021000, 170438467021001, 170438467021002,
170438467021003, 170438467021004, 170438467021005, 170438467021006,
170438467021007, 170438467021008, 170438467021009, 170438467021010,
170438467021011, 170438467021012, 170438467021013, 170438467021014,
170438467021015, 170438467021019, 170438467021020, 170438467021021,
170438467021022, 170438467021023, 170438467021024, 170438467021025,
170438467021026, 170438467021027, 170438467021028, 170438467021029,
170438467021032, 170438467021033, 170438467021034, 170438467021035,
170438467021037, 170438467021038, 170438467021040, 170438467021041,
170438467021042, 170438467021043, 170438467021044, 170438467021058,
170438467021059, 170438467021064, 170438467021066, 170438467021067,
170438467021068, 170438467023006, 170438467023007, 170438467023008,
170438467023009

In Voting Precinct: Addison 67,
BLOCKS:

170438467021016, 170438467021017, 170438467021018, 170438467022032,
170438467022033, 170438467022034, 170438467022035, 170438467022036,
170438467022037, 170438467022038, 170438467022039, 170438467022043,
170438467022046, 170438467022047, 170438467022050, 170438467022051

In Voting Precinct: Bloomingdale 37,
BLOCKS:

170438409072004, 170438409072010

In Voting Precinct: Bloomingdale 72,
BLOCKS:

170438409071024, 170438409072000, 170438409072005, 170438409072006,
170438409072007, 170438409072008, 170438409073031

In Voting Precinct: Bloomingdale 83,
BLOCKS:

170438411091012, 170438411091013, 170438411091014, 170438411091015,
170438411093000

In Voting Precinct: Bloomingdale 85,
BLOCKS:

170438409043000, 170438409043001, 170438409043004, 170438409081049

In Voting Precinct: York 132,
BLOCKS:
170438430003027

In Voting Precinct: York 35,
BLOCKS:
170438439001016, 170438439001024

In Voting Precinct: York 37,
BLOCKS:
170438439002015, 170438439002020

In Voting Precinct: York 50,
BLOCKS:
170438429001005, 170438429001010, 170438429001020, 170438429003003,
170438429003004, 170438429003011

District 2:

In Township: Downers Grove,

VOTING PRECINCTS:

Downers Grove 2, Downers Grove 9, Downers Grove 15, Downers Grove 17, Downers Grove 18, Downers Grove 19, Downers Grove 29, Downers Grove 30, Downers Grove 31, Downers Grove 36, Downers Grove 46, Downers Grove 47, Downers Grove 48, Downers Grove 49, Downers Grove 50, Downers Grove 51, Downers Grove 65, Downers Grove 73, Downers Grove 74, Downers Grove 85, Downers Grove 107, Downers Grove 127, Downers Grove 129

In Township: Lisle,

VOTING PRECINCTS:

Lisle 5, Lisle 8, Lisle 9, Lisle 10, Lisle 15, Lisle 16, Lisle 17, Lisle 20, Lisle 24, Lisle 29, Lisle 30, Lisle 32, Lisle 34, Lisle 40, Lisle 41, Lisle 42, Lisle 50, Lisle 60, Lisle 62, Lisle 64, Lisle 66, Lisle 79, Lisle 82, Lisle 89, Lisle 94, Lisle 108, Lisle 125

In Township: York,

VOTING PRECINCTS:

York 3, York 5, York 10, York 11, York 12, York 13, York 14, York 16, York 17, York 19, York 20, York 22, York 24, York 25, York 26, York 27, York 29, York 30, York 31, York 32, York 33, York 36, York 38, York 39, York 43, York 46, York 47, York 48, York 49, York 51, York 52, York 54, York 55, York 56, York 57, York 58, York 59, York 60, York 62, York 63, York 64, York 66, York 67, York 68, York 69, York 71, York 72, York 73, York 76, York 77, York 78, York 79, York 80, York 81, York 82, York 83, York 84, York 86, York 87, York 88, York 89, York 90, York 91, York 92, York 93, York 94, York 96, York 97, York 98, York 100, York 101, York 103, York 104, York 105, York 106, York 108, York 109, York 110, York 111, York 112, York 113, York 114, York 115, York 116, York 117, York 118, York 119, York 120, York 121, York 122, York 124, York 125, York 126, York 127, York 128, York 129, York 130, York 131, York 134, York 135

In Voting Precinct: Addison 35,

BLOCKS:

170438467022054, 170438467022056

In Voting Precinct: Addison 56,

BLOCKS:

170438467021030, 170438467021031, 170438467021036, 170438467021045, 170438467021046, 170438467021047, 170438467021048, 170438467021049, 170438467021052, 170438467021053, 170438467021054, 170438467021055, 170438467021056, 170438467021057, 170438467021060, 170438467021061, 170438467021062, 170438467021063, 170438467021065

In Voting Precinct: Addison 67,

BLOCKS:

170438467021050, 170438467021051, 170438467022040, 170438467022041, 170438467022042, 170438467022044, 170438467022045

In Voting Precinct: Downers Grove 32,

BLOCKS:

170438450002000, 170438450002001, 170438450002002, 170438450002011,
170438450002012, 170438450002013, 170438450002014, 170438450002015,
170438450002016, 170438450002017, 170438450002018, 170438450002019,
170438450002020

In Voting Precinct: Downers Grove 33,

BLOCKS:

170438450001002, 170438450001003, 170438450001004, 170438450002003,
170438450002004, 170438450002005, 170438450002006, 170438450002007,
170438450002008, 170438450002009, 170438450002010, 170438450002021,
170438450004000, 170438450004001, 170438450004014, 170438450004015,
170438450004016, 170438450004017

In Voting Precinct: Lisle 101,

BLOCKS:

170438460021004, 170438460021005, 170438460021006, 170438460023003,
170438460023004, 170438460023005, 170438460023008, 170438460023009,
170438460023010, 170438460023011, 170438460023012, 170438460023013,
170438460023014, 170438460023015, 170438460023016, 170438460023017,
170438460023018, 170438460023019, 170438460023022, 170438460023023,
170438460023070, 170438460023072, 170438460032005, 170438460032006,
170438460032007, 170438460032008, 170438460032009, 170438460032010,
170438460032011, 170438460032012, 170438460032013, 170438460032014,
170438460032015, 170438460032016, 170438460032017, 170438460032018,
170438460032019, 170438460032020, 170438460032021, 170438460043012,
170438460043013, 170438460043017, 170438460043018, 170438460043019,
170438460043026

In Voting Precinct: Lisle 107,

BLOCKS:

170438461042061

In Voting Precinct: Lisle 114,

BLOCKS:

170438461023003, 170438461023004, 170438461023005, 170438461023006,
170438461023007, 170438461023008

In Voting Precinct: Lisle 38,

BLOCKS:

170438461021028, 170438461022006, 170438461022025, 170438461022026,
170438461022027, 170438461022028, 170438461022030, 170438461022040,
170438461023000, 170438461023001, 170438461023002

In Voting Precinct: Lisle 61,

BLOCKS:

170438461022018, 170438461022019, 170438461022032, 170438461022033,
170438461022034, 170438461022036, 170438461022038, 170438461042015,
170438461042016, 170438461042017, 170438461042018, 170438461042023,
170438461042030

In Voting Precinct: Lisle 7,

BLOCKS:

170438460041007, 170438460041008, 170438460041014, 170438460043027,
170438460043028, 170438460043029, 170438460043030, 170438460043039,
170438460043040, 170438460043049, 170438460043050

In Voting Precinct: Lisle 71,

BLOCKS:

170438463072019, 170438463072024

In Voting Precinct: Lisle 80,

BLOCKS:

170438461021026, 170438461021027, 170438461022004, 170438461022005

In Voting Precinct: Lisle 98,

BLOCKS:

170438463132007, 170438463132008, 170438463132009, 170438463134000,
170438463134001, 170438463134002, 170438463134003, 170438463134007

In Voting Precinct: York 132,

BLOCKS:

170438430003000, 170438430003001, 170438430003002, 170438430003003,
170438430003004, 170438430003005, 170438430003006, 170438430003008,
170438430003009, 170438430003010, 170438430003011, 170438430003017,
170438430003025, 170438430003026, 170438431002000, 170438431002001,
170438431002002

In Voting Precinct: York 35,

BLOCKS:

170438438001027, 170438438001028, 170438439001000, 170438439001001,
170438439001002, 170438439001003, 170438439001004, 170438439001005,
170438439001006, 170438439001007, 170438439001008, 170438439001009,
170438439001010, 170438439001011, 170438439001012, 170438439001017,
170438439001018, 170438439001019, 170438439001020, 170438439001021,
170438439001022, 170438439001023, 170438440021006

In Voting Precinct: York 37,

BLOCKS:

170438439003000, 170438439003002, 170438439003003, 170438439003004,
170438439003005, 170438439003006, 170438439003007, 170438439003008,
170438439003015, 170438439003016, 170438439003017, 170438439003018,
170438439003019, 170438439003020, 170438439003021

In Voting Precinct: York 45,
BLOCKS:

170438443051003, 170438443051004, 170438443051005, 170438443051006,
170438443051007, 170438443051008, 170438443051013, 170438443051014,
170438443051016, 170438443053011, 170438443053012, 170438443053015,
170438443053016, 170438443053017, 170438443053018, 170438443053019

In Voting Precinct: York 50,
BLOCKS:

170438429001006, 170438429001007, 170438429001008, 170438429001009,
170438429001021, 170438429001022, 170438430001000, 170438430001006,
170438430001007, 170438430001009, 170438430001010, 170438430001011

In Voting Precinct: York 75,
BLOCKS:

170438435002023, 170438435002024, 170438435002034, 170438436022001,
170438436022002, 170438436022003

District 3:

In Township: Downers Grove,

VOTING PRECINCTS:

Downers Grove 1, Downers Grove 3, Downers Grove 4, Downers Grove 5, Downers Grove 6, Downers Grove 7, Downers Grove 8, Downers Grove 10, Downers Grove 11, Downers Grove 12, Downers Grove 13, Downers Grove 14, Downers Grove 16, Downers Grove 20, Downers Grove 21, Downers Grove 22, Downers Grove 23, Downers Grove 24, Downers Grove 25, Downers Grove 26, Downers Grove 27, Downers Grove 28, Downers Grove 34, Downers Grove 35, Downers Grove 37, Downers Grove 38, Downers Grove 39, Downers Grove 40, Downers Grove 41, Downers Grove 42, Downers Grove 43, Downers Grove 44, Downers Grove 45, Downers Grove 52, Downers Grove 53, Downers Grove 54, Downers Grove 55, Downers Grove 56, Downers Grove 57, Downers Grove 58, Downers Grove 59, Downers Grove 60, Downers Grove 61, Downers Grove 62, Downers Grove 63, Downers Grove 64, Downers Grove 66, Downers Grove 67, Downers Grove 68, Downers Grove 69, Downers Grove 70, Downers Grove 71, Downers Grove 72, Downers Grove 75, Downers Grove 76, Downers Grove 77, Downers Grove 78, Downers Grove 79, Downers Grove 80, Downers Grove 81, Downers Grove 82, Downers Grove 83, Downers Grove 84, Downers Grove 86, Downers Grove 87, Downers Grove 88, Downers Grove 89, Downers Grove 90, Downers Grove 91, Downers Grove 92, Downers Grove 93, Downers Grove 94, Downers Grove 95, Downers Grove 96, Downers Grove 97, Downers Grove 98, Downers Grove 99, Downers Grove 100, Downers Grove 101, Downers Grove 102, Downers Grove 103, Downers Grove 104, Downers Grove 105, Downers Grove 106, Downers Grove 108, Downers Grove 109, Downers Grove 110, Downers Grove 111, Downers Grove 112, Downers Grove 113, Downers Grove 114, Downers Grove 115, Downers Grove 116, Downers Grove 117, Downers Grove 118, Downers Grove 119, Downers Grove 120, Downers Grove 121, Downers Grove 122, Downers Grove 123, Downers Grove 124, Downers Grove 125, Downers Grove 126, Downers Grove 128, Downers Grove 130, Downers Grove 131, Downers Grove 132, Downers Grove 133, Downers Grove 134, Downers Grove 135, Downers Grove 136, Downers Grove 137, Downers Grove 138, Downers Grove 139, Downers Grove 140, Downers Grove 141, Downers Grove 142, Downers Grove 143, Downers Grove 144, Downers Grove 145, Downers Grove 146, Downers Grove 147, Downers Grove 148, Downers Grove 149, Downers Grove 150, Downers Grove 151, Downers Grove 152, Downers Grove 153, Downers Grove 154, Downers Grove 155, Downers Grove 156

In Township: Lisle,

VOTING PRECINCTS:

Lisle 2, Lisle 18, Lisle 21, Lisle 26, Lisle 27, Lisle 28, Lisle 35, Lisle 36, Lisle 39, Lisle 48, Lisle 49, Lisle 51, Lisle 53, Lisle 54, Lisle 58, Lisle 63, Lisle 65, Lisle 72, Lisle 73, Lisle 74, Lisle 93, Lisle 97, Lisle 99, Lisle 102, Lisle 110, Lisle 122, Lisle 123, Lisle 124, Lisle 128

In Voting Precinct: Downers Grove 32,

BLOCKS:

170438450001000

In Voting Precinct: Downers Grove 33,

BLOCKS:

170438450001001, 170438450004022

In Voting Precinct: Lisle 109,

BLOCKS:

170438463045006, 170438463045007

In Voting Precinct: Lisle 71,

BLOCKS:

170438463071003, 170438463071004, 170438463071006, 170438463071007,
170438463071008, 170438463071010, 170438463071011, 170438463071014,
170438463072011, 170438463072025, 170438463072026, 170438463072027,
170438463072028, 170438463073000, 170438463073001, 170438463073002,
170438463073003, 170438463073004, 170438463073005, 170438463073006

District 4:

In Township: Bloomingdale,

VOTING PRECINCTS:

Bloomingdale 6, Bloomingdale 14, Bloomingdale 15, Bloomingdale 16, Bloomingdale 21,
Bloomingdale 22, Bloomingdale 23, Bloomingdale 25, Bloomingdale 27, Bloomingdale 28,
Bloomingdale 42, Bloomingdale 47, Bloomingdale 48, Bloomingdale 50, Bloomingdale 52,
Bloomingdale 57, Bloomingdale 63, Bloomingdale 64, Bloomingdale 76, Bloomingdale 84,
Bloomingdale 88, Bloomingdale 91, Bloomingdale 94, Bloomingdale 95, Bloomingdale 97,
Bloomingdale 104

In Township: Milton,

VOTING PRECINCTS:

Milton 1, Milton 2, Milton 3, Milton 4, Milton 6, Milton 7, Milton 8, Milton 9, Milton 10, Milton
11, Milton 12, Milton 13, Milton 14, Milton 15, Milton 16, Milton 17, Milton 19, Milton 20,
Milton 21, Milton 22, Milton 23, Milton 24, Milton 25, Milton 26, Milton 27, Milton 28, Milton
29, Milton 30, Milton 31, Milton 32, Milton 33, Milton 34, Milton 35, Milton 37, Milton 38,
Milton 39, Milton 40, Milton 41, Milton 42, Milton 43, Milton 44, Milton 45, Milton 46, Milton
47, Milton 48, Milton 49, Milton 50, Milton 51, Milton 52, Milton 53, Milton 55, Milton 56,
Milton 57, Milton 58, Milton 59, Milton 60, Milton 62, Milton 64, Milton 65, Milton 66, Milton
67, Milton 68, Milton 69, Milton 70, Milton 72, Milton 73, Milton 76, Milton 77, Milton 78,
Milton 79, Milton 80, Milton 81, Milton 83, Milton 84, Milton 85, Milton 86, Milton 87, Milton
88, Milton 89, Milton 90, Milton 91, Milton 92, Milton 94, Milton 95, Milton 96, Milton 97,
Milton 99, Milton 100, Milton 101, Milton 102, Milton 103, Milton 104, Milton 105, Milton
106, Milton 107, Milton 108, Milton 110, Milton 111, Milton 112, Milton 113, Milton 114,
Milton 115, Milton 117, Milton 118, Milton 119, Milton 120, Milton 121, Milton 122, Milton
123, Milton 124, Milton 125, Milton 127, Milton 128, Milton 129, Milton 130

In Township: York,

VOTING PRECINCTS:

York 9, York 18, York 21, York 42, York 44, York 65, York 74, York 95, York 102, York 107,
York 123, York 136

In Voting Precinct: Addison 56,
BLOCKS:
170438467021039

In Voting Precinct: Bloomingdale 37,
BLOCKS:
170438409072011, 170438409072012, 170438409072013, 170438411092010,
170438411092011, 170438411092012, 170438411092013

In Voting Precinct: Bloomingdale 72,
BLOCKS:
170438409072009

In Voting Precinct: Bloomingdale 83,
BLOCKS:
170438411092008, 170438411093001

In Voting Precinct: Bloomingdale 85,
BLOCKS:
170438409043002, 170438409043003, 170438409043005, 170438409043006,
170438409043007, 170438409043008, 170438409043009, 170438409043010,
170438409043011, 170438409043020, 170438409043021, 170438409043022,
170438409043023, 170438409043024, 170438409043025, 170438409043026,
170438409043027, 170438409043028, 170438409043029, 170438409043034,
170438409043035, 170438409043036, 170438409081000, 170438409081001,
170438409081002, 170438409081003, 170438409081004, 170438409081005,
170438409081006, 170438409081007, 170438409081008, 170438409081009,
170438409081010, 170438409081011, 170438409081012, 170438409081013,
170438409081014, 170438409081015, 170438409081016, 170438409081020,
170438409081022, 170438409081023, 170438409081024, 170438409081025,
170438409081026, 170438409081027, 170438409081028, 170438409081030,
170438409081031, 170438409081041, 170438409081042, 170438409081043,
170438409081044, 170438409081045, 170438409081046, 170438409081048,
170438409081050, 170438409081051, 170438409081052, 170438409081053

In Voting Precinct: Bloomingdale 9,
BLOCKS:
170438412081009, 170438412081012, 170438412081013, 170438412081014,
170438412081015, 170438412081016, 170438412081017, 170438412081018,
170438412081019, 170438412081020, 170438412081021, 170438412081022,
170438412081023, 170438412081024, 170438412081025

In Voting Precinct: Lisle 101,
BLOCKS:

170438460021000, 170438460021001, 170438460021002, 170438460021003,
170438460023000, 170438460023001, 170438460023002, 170438460023006,
170438460023007, 170438460023068, 170438460023069, 170438460043000,
170438460043001, 170438460043002, 170438460043003, 170438460043010,
170438460043011, 170438460043060

In Voting Precinct: Lisle 38,

BLOCKS:

170438461021015, 170438461021016

In Voting Precinct: Lisle 7,

BLOCKS:

170438460043004, 170438460043005, 170438460043006, 170438460043007,
170438460043008, 170438460043009, 170438460043014, 170438460043015,
170438460043016, 170438460043031, 170438460043032, 170438460043033,
170438460043034, 170438460043035, 170438460043036, 170438460043061

In Voting Precinct: Lisle 80,

BLOCKS:

170438461021000, 170438461021001, 170438461021002, 170438461021003,
170438461021004, 170438461021005, 170438461021008, 170438461021009,
170438461021010, 170438461021011, 170438461021012, 170438461021013,
170438461021014, 170438461021017, 170438461021018, 170438461021019,
170438461021020, 170438461021021, 170438461021022, 170438461021023,
170438461021024, 170438461021025, 170438461061014

In Voting Precinct: Milton 116,

BLOCKS:

170438417041002, 170438417041003, 170438417041005, 170438417041006,
170438417041007, 170438417041008, 170438417041009, 170438417041010,
170438417041011, 170438417041012, 170438417041013, 170438417041014,
170438417041017

In Voting Precinct: Milton 63,

BLOCKS:

170438418022005, 170438418022017, 170438418022018, 170438418022019,
170438418022020, 170438418022021, 170438426031002, 170438426031003,
170438426031004, 170438426031005

In Voting Precinct: York 45,

BLOCKS:

170438443051015

In Voting Precinct: York 75,

BLOCKS:

170438435001002, 170438435001005, 170438435001006, 170438435001014,
170438435001015, 170438435001016, 170438435001017, 170438435002022,
170438435002025, 170438435002026, 170438435002027

District 5:

In Township: Lisle,

VOTING PRECINCTS:

Lisle 1, Lisle 3, Lisle 4, Lisle 6, Lisle 11, Lisle 12, Lisle 13, Lisle 14, Lisle 19, Lisle 22, Lisle 23, Lisle 25, Lisle 31, Lisle 33, Lisle 43, Lisle 44, Lisle 45, Lisle 46, Lisle 47, Lisle 52, Lisle 55, Lisle 56, Lisle 57, Lisle 59, Lisle 67, Lisle 68, Lisle 69, Lisle 70, Lisle 75, Lisle 76, Lisle 77, Lisle 78, Lisle 81, Lisle 83, Lisle 84, Lisle 85, Lisle 86, Lisle 87, Lisle 88, Lisle 90, Lisle 91, Lisle 95, Lisle 96, Lisle 100, Lisle 103, Lisle 104, Lisle 105, Lisle 106, Lisle 111, Lisle 112, Lisle 113, Lisle 115, Lisle 116, Lisle 117, Lisle 118, Lisle 119, Lisle 120, Lisle 121, Lisle 126, Lisle 127, Lisle 129

In Township: Naperville,

VOTING PRECINCTS:

Naperville 1, Naperville 2, Naperville 3, Naperville 4, Naperville 5, Naperville 6, Naperville 7, Naperville 8, Naperville 9, Naperville 10, Naperville 11, Naperville 12, Naperville 13, Naperville 14, Naperville 15, Naperville 16, Naperville 17, Naperville 18, Naperville 19, Naperville 20, Naperville 21, Naperville 22, Naperville 24, Naperville 25, Naperville 26, Naperville 27, Naperville 28, Naperville 29, Naperville 30, Naperville 32, Naperville 33, Naperville 34, Naperville 35, Naperville 36, Naperville 37, Naperville 38, Naperville 39, Naperville 40, Naperville 41, Naperville 42, Naperville 43, Naperville 44, Naperville 45, Naperville 46, Naperville 47, Naperville 48, Naperville 49, Naperville 50, Naperville 51, Naperville 52, Naperville 53, Naperville 54, Naperville 55, Naperville 56, Naperville 57, Naperville 58, Naperville 59, Naperville 60, Naperville 62, Naperville 63, Naperville 64, Naperville 65, Naperville 66, Naperville 67, Naperville 68, Naperville 69, Naperville 71, Naperville 72, Naperville 73, Naperville 74, Naperville 75, Naperville 76, Naperville 77, Naperville 78, Naperville 79, Naperville 80, Naperville 81, Naperville 82, Naperville 83, Naperville 84, Naperville 85, Naperville 86, Naperville 87, Naperville 88, Naperville 89, Naperville 90, Naperville 91, Naperville 92, Naperville 93, Naperville 94, Naperville 95, Naperville 96, Naperville 97

In Voting Precinct: Lisle 107,

BLOCKS:

170438461031000, 170438461031001, 170438461031002, 170438461031003, 170438461041005, 170438461041006, 170438461041007, 170438461041008, 170438461041009, 170438461041010

In Voting Precinct: Lisle 109,

BLOCKS:

170438463045000, 170438463045001, 170438463045002, 170438463045003, 170438463045004

In Voting Precinct: Lisle 114,

BLOCKS:

170438461023009

In Voting Precinct: Lisle 37,

BLOCKS:

170438461061017, 170438461061020, 170438461061032, 170438461061033,
170438461061034, 170438461061035, 170438461061036, 170438461061042,
170438461061043, 170438461062010, 170438461062011, 170438461062012

In Voting Precinct: Lisle 38,

BLOCKS:

170438461021029, 170438461022007, 170438461022022, 170438461022023,
170438461022024, 170438461023010

In Voting Precinct: Lisle 61,

BLOCKS:

170438461021030, 170438461022008, 170438461022009, 170438461022010,
170438461022011, 170438461022013, 170438461022014, 170438461022015,
170438461022016, 170438461022017, 170438461022020, 170438461022021,
170438461022031, 170438461022035

In Voting Precinct: Lisle 80,

BLOCKS:

170438461021031, 170438461022012

In Voting Precinct: Lisle 92,

BLOCKS:

170438461061015, 170438461061016, 170438461061021, 170438461061022,
170438461061028, 170438461061040

In Voting Precinct: Lisle 98,

BLOCKS:

170438463131007, 170438463131008, 170438463134004, 170438463134005,
170438463134006

In Voting Precinct: Naperville 31,

BLOCKS:

170438464052013, 170438464052014, 170438464052015, 170438464052016,
170438464052022, 170438464052023, 170438464052024, 170438464052025,
170438464052026, 170438464052027, 170438464052028, 170438464052029,
170438464052030, 170438464052031, 170438464052032, 170438464052033,
170438464052034, 170438464052035, 170438464052036, 170438464052037,
170438464052039, 170438464052040, 170438464052041, 170438464052042,
170438464052067, 170438464131014, 170438464131016, 170438464131052,
170438464131053, 170438464131054, 170438464131055, 170438464131057,
170438464131058, 170438464131059, 170438464131060, 170438464131061,
170438464131062

In Voting Precinct: Naperville 61,

BLOCKS:

170438464052000, 170438464052001, 170438464052002, 170438464052003,
170438464052004, 170438464052005, 170438464052006, 170438464052007,
170438464052008, 170438464052010, 170438464131000, 170438464131001,
170438464131005, 170438464131006, 170438464131011, 170438464131012,
170438464131013, 170438464131017

In Voting Precinct: Naperville 70,

BLOCKS:

170438464092003, 170438464111018

District 6:

TOWNSHIPS:

Wayne, Winfield

In Township: Bloomingdale,

VOTING PRECINCTS:

Bloomingdale 4, Bloomingdale 18, Bloomingdale 26, Bloomingdale 38, Bloomingdale 40, Bloomingdale 43, Bloomingdale 45, Bloomingdale 51, Bloomingdale 53, Bloomingdale 58, Bloomingdale 59, Bloomingdale 60, Bloomingdale 65, Bloomingdale 67, Bloomingdale 68, Bloomingdale 69, Bloomingdale 73, Bloomingdale 74, Bloomingdale 77, Bloomingdale 80, Bloomingdale 81, Bloomingdale 82, Bloomingdale 87, Bloomingdale 89, Bloomingdale 100, Bloomingdale 103

In Township: Milton,

VOTING PRECINCTS:

Milton 5, Milton 18, Milton 36, Milton 54, Milton 61, Milton 71, Milton 74, Milton 75, Milton 82, Milton 93, Milton 98, Milton 109, Milton 126

In Township: Naperville,

VOTING PRECINCTS:

Naperville 23

In Voting Precinct: Bloomingdale 9,

BLOCKS:

170438412062016, 170438412062017, 170438412062018, 170438412062020, 170438412062026, 170438412064000, 170438412064001, 170438412064002, 170438412064003, 170438412064004, 170438412064005, 170438412064006, 170438412064007, 170438412064018, 170438412064021, 170438412064022

In Voting Precinct: Lisle 37,

BLOCKS:

170438461061009, 170438461061018

In Voting Precinct: Lisle 92,

BLOCKS:

170438461021006, 170438461021007, 170438461061000, 170438461061001, 170438461061002, 170438461061003, 170438461061004, 170438461061005, 170438461061006, 170438461061007, 170438461061008, 170438461061010, 170438461061011, 170438461061012, 170438461061013, 170438461061019, 170438461061023, 170438461061024

In Voting Precinct: Milton 116,

BLOCKS:

170438417041000, 170438417041001

In Voting Precinct: Milton 63,

BLOCKS:

170438418022006, 170438418022016, 170438426031006

In Voting Precinct: Naperville 31,

BLOCKS:

170438464131015, 170438464131039, 170438464131040, 170438464131046,
170438464131048, 170438464131049, 170438464131050, 170438464131051,
170438464131056

In Voting Precinct: Naperville 61,

BLOCKS:

170438464131002, 170438464131003, 170438464131004, 170438464131007,
170438464131008, 170438464131009, 170438464131010, 170438464131018,
170438464131019, 170438464131020, 170438464131021, 170438464131022,
170438464131023, 170438464131024, 170438464131025, 170438464131026,
170438464131027, 170438464131028, 170438464131029, 170438464131030,
170438464131032, 170438464131033, 170438464131034, 170438464131035,
170438464131036, 170438464131037, 170438464131038, 170438464131041,
170438464131042, 170438464131043, 170438464131044, 170438464131045,
170438464131047

In Voting Precinct: Naperville 70,

BLOCKS:

170438464081000, 170438464091000, 170438464091001, 170438464091002,
170438464091003, 170438464091006, 170438464091007, 170438464091010,
170438464091011, 170438464091012, 170438464091013, 170438464091014,
170438464091015, 170438464091016, 170438464091017, 170438464091018,
170438464091019, 170438464091020, 170438464091021, 170438464091022,
170438464091023, 170438464091024, 170438464091025, 170438464091026,
170438464091027, 170438464091028, 170438464092000, 170438464092004,
170438464111000, 170438464111001, 170438464111002, 170438464111003,
170438464111004, 170438464111005, 170438464111006, 170438464111007,
170438464111008, 170438464111009, 170438464111010, 170438464111011,
170438464111012, 170438464111013, 170438464111014, 170438464111015,
170438464111016, 170438464111020, 170438464131031


STATE OF ILLINOIS)
)SS
COUNTY OF DU PAGE)

I, JUDITH A. MALAHY, SECRETARY OF THE FOREST PRESERVE
COMMISSION OF DUPAGE COUNTY IN THE STATE OF ILLINOIS, AND
KEEPER OF THE RECORDS AND FILES THEREOF, DO HEREBY
CERTIFY THE FOREGOING TO BE A TRUE AND CORRECT COPY OF

ORDINANCE #21-321

EXECUTED AT THE DISTRICT HEADQUARTERS, 3 SOUTH 580 NAPERVILLE
ROAD, WHEATON, ILLINOIS, ON THE 2nd DAY OF NOVEMBER A.D., 2021.

GIVEN UNDER MY HAND AND OFFICIAL SEAL AT WHEATON,
ILLINOIS, THIS 3rd DAY OF NOVEMBER A.D., 2021.



SECRETARY
FOREST PRESERVE COMMISSION
DU PAGE COUNTY, ILLINOIS