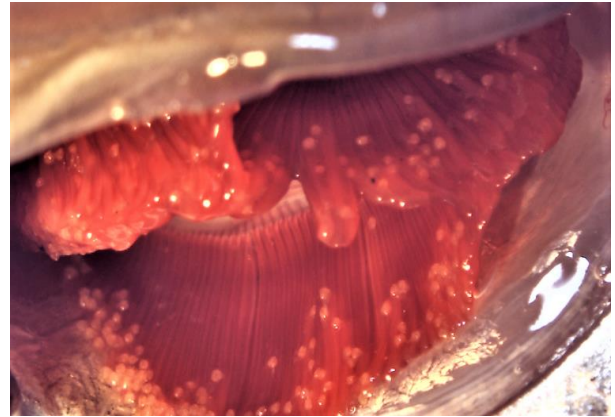


Mussel Rearing at the Urban Stream Research Center



Gravid female plain pocketbook, *Lampsilis cardium*, displaying lure.



Fluted-shell, *Lasmigona costata*, glochidia larva (white specs) attached to gill tissue of a host fish creek chub (*Semotilus atromaculatus*).



Mussel Bucket System



Juvenile plain pocketbook, *Lampsilis cardium*, in a bucket system chamber.



Pan System



Sub-adult plain pocketbook, *Lampsilis cardium*, in pan.



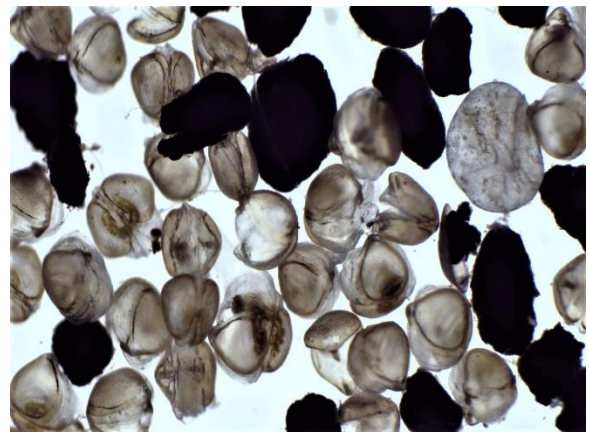
Growout system



Sub-adult plain pocketbook, *Lampsilis cardium*, in growout system.



Trough system



Juvenile flutedshell, *Lasmigona costata*, from trough.



Hruska Boxes



Juvenile white heelsplitter, *Lasmigona complanata*, raised in Hruska Boxes.



Sub-adult mussel holding raceway



Sub-adult fat mucket, *Lampsilis siliquioidea*, in raceway.



Floating basket



Sub-adult fat mucket, *Lampsilis siliquioidea*, from floating basket.



Creekside system



Sub-adult white heelsplitter, *Lasmigona complanata*, from creekside system.



Sub-adult fat mucket, *Lampsilis siliquoidea*, with Hallprint and PIT tags.



Sub-adult fat mucket, *Lampsilis siliquoidea*, tagged with glitter.