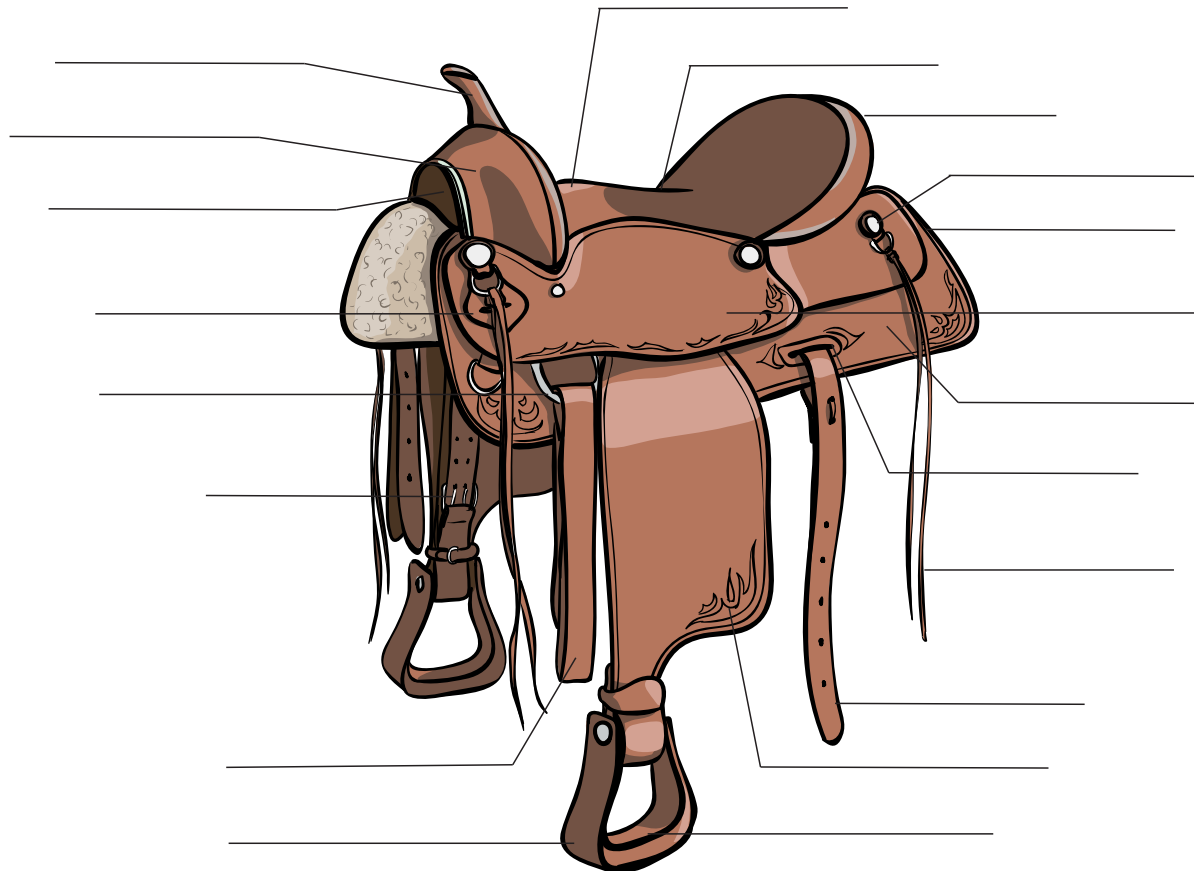


Parts of a Western Saddle

Danada Equestrian Center uses the western saddle in its lesson program when teaching individuals how to ride a horse. The western saddle keeps the rider (especially a beginner!) secure in the seat. It distributes the rider's weight across the horse's back. The western saddle is built on a wooden tree. It is covered by leather or a synthetic material. Its underpart is often lined with wool or an acrylic material, and its seat is covered by suede or leather. Most western saddles not only have a horn but also a cantle and fenders. How many of the western saddle's parts can you identify below?

**back housing · billet strap · bleivins · cantle · concho · fender · front-rigging dee · girth · gullet · horn · pommel
rear rigging · seat · seat jockey · seat rise · skirt · strings · stirrup · tie-strap holder · tread cover**



Parts of a Western Saddle

Danada Equestrian Center uses the western saddle in its lesson program when teaching individuals how to ride a horse. The western saddle keeps the rider (especially a beginner!) secure in the seat. It distributes the rider's weight across the horse's back. The western saddle is built on a wooden tree. It is covered by leather or a synthetic material. Its underpart is often lined with wool or an acrylic material, and its seat is covered by suede or leather. Most western saddles not only have a horn but also a cantle and fenders. How many of the western saddle's parts can you identify below?

**back housing · billet strap · blevins · cantle · concho · fender · front-rigging dee · girth · gullet · horn · pommel
rear rigging · seat · seat jockey · seat rise · skirt · strings · stirrup · tie-strap holder · tread cover**

