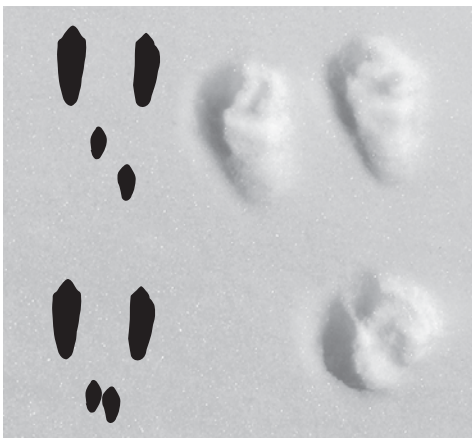


WHOSE TRACK IS THAT?

After a fresh snowfall, step outside and see who's been visiting your backyard!



EASTERN COTTONTAIL

It lands with its large hind feet in front. If its two smaller prints touch, it looks like a print made by three-legged animal.



COYOTE

Its tracks are similar to that of a domestic dog but are more oval-shaped and likely to show claws.



VIRGINIA OPOSSUM

The prints of its hind legs often show off its opposable thumbs, which may stick out at right angles from the other toes.



RACCOON

Its stride lands each large hind foot near the print made by the front foot on the opposite side.



WHITE-TAILED DEER

Its two-toed hooves create heart-shaped tracks (if you look at them upside-down).



GRAY OR FOX SQUIRREL

You may be able to make out individual claw-tipped toes.

