

## UPDATED 2020 Catalog

DuPage Forest Preserves

# NATIVE PLANT SALE

**We're changing our sale for 2020. The sale will be preorders with scheduled curbside pickups only. We will not have a tent sale. Please read carefully.**

- All orders (five-plant minimum) must be placed via email or phone by May 17. Complete and submit the order form posted at [dupageforest.org/native-plant-sale](http://dupageforest.org/native-plant-sale). We process orders as we receive them, but all are subject to supplier availability.
- Before May 31 you'll receive an invoice via email with steps on how to securely pay for your plants online.
- Once you pay, you'll receive a time slot between 9 a.m. and 6 p.m. on June 5 or 6, when you'll be able to pick up your order curbside at Mayslake Peabody Estate in Oak Brook with limited person-to-person contact.
- We have a great variety of flowers, grasses, shrubs and trees so place your order today!



**Think global. Plant local.**



**Forest Preserve District of DuPage County**

# FULL SUN

	ITEM #	PLANT	HEIGHT & SPREAD	LIGHT	SOIL MOISTURE	BLOOM TIME & COLOR	SIZE	PRICE
	1	black-eyed Susan <i>Rudbeckia hirta</i>	H 2 – 3 ft S 1 – 2 ft	full sun	dry – medium	Jun – Oct yellow	pint	\$5
	2	blue flag iris <i>Iris virginica shrevei</i>	H 1.5 – 2 ft S 1.5 – 2 ft	full sun	wet	May – Jul violet blue	pint	\$5
	3	common ironweed <i>Vernonia fasciculata</i>	H 4 – 6 ft S 1.5 – 3 ft	full sun	medium	Jul – Sep purple	pint	\$5
	4	common mountain mint <i>Pycnanthemum virginianum</i>	H 2 – 3 ft S 1 – 1.5 ft	full sun	dry – medium	Jun – Sep white	pint	\$5
	5	compass plant <i>Silphium laciniatum</i>	H 3 – 10 ft S 1.5 – 3 ft	full sun	dry – medium	Jun – Sep yellow	pint	\$5

© Danada Flowers



Forest Preserve District of DuPage County

LIGHT	Hours of Sun Each Day
Full Sun	5 or more
Part Sun	2 – 5
Shade	2 or less

SOIL MOISTURE	
Dry	soil feels dry and dusty or is cracked or difficult to dig
Medium	soil is moist 4 – 6 inches down
Wet	water stands in yard for several days after a heavy rain

# FULL SUN

ITEM #

PLANT

HEIGHT &  
SPREAD

LIGHT

SOIL  
MOISTURE

BLOOM TIME  
& COLOR

SIZE

PRICE



6

cup plant  
*Silphium perfoliatum*

H 3 – 10 ft  
S 1 – 3 ft

full sun

medium

Jul – Sep  
yellow

pint

\$5



7

dwarf blazing star  
*Liatris cylindracea*

H 1 – 1.5 ft  
S 1 – 1.5 ft

full sun

dry –  
medium dry

Jul – Sep  
purple

Pint

\$5



8

eastern prickly pear cactus  
*Opuntia cespitosa*

H 0.5 – 1 ft  
S 1 – 2 ft

full sun

dry

Jul  
yellow

pint

\$5



9

false sunflower  
*Heliopsis helianthoides*

H 3 – 6 ft  
S 2 – 3 ft

full sun

dry

Jun – Aug  
yellow

pint

\$5



10

flowering spurge  
*Euphorbia corollata*

H 2 – 3 ft  
S 1.5 – 2 ft

full sun

medium

Jun – Jul  
white

pint

\$5

LIGHT  
Full Sun 5 or more  
Part Sun 2 – 5  
Shade 2 or less

SOIL MOISTURE  
Dry soil feels dry and dusty or is cracked or difficult to dig  
Medium soil is moist 4 – 6 inches down  
Wet water stands in yard for several days after a heavy rain



Forest Preserve District of DuPage County

# FULL SUN

ITEM #

PLANT

HEIGHT &  
SPREAD

LIGHT

SOIL  
MOISTURE

BLOOM TIME  
& COLOR

SIZE

PRICE



11

large-flowered  
beardtongue  
*Penstemon grandiflorus*

H 2 – 4 ft  
S 1 – 1.5 ft

full sun

dry – medium

May – Jun  
white-pink

pint

\$5



12

lead plant  
*Amorpha canescens*

H 2 – 3 ft  
S 2 – 3 ft

full sun

dry – medium

Jun – Jul  
purple

quart

\$7



13

New England aster  
*Symphyotrichum  
novae-angliae*

H 2 – 5 ft  
S 2 – 3 ft

full sun

medium

Aug – Oct  
purple

pint

\$5



14

obedient plant  
*Physostegia virginiana*

H 3 – 4 ft  
S 2 – 3 ft

full sun

medium

Jul  
pink

pint

\$5



15

prairie blazing star  
*Liatris pycnostachya*

H 2 – 5 ft  
S 1 – 2 ft

full sun

dry – medium

Jul  
lilac purple

pint  
gallon

\$5  
\$10

16

LIGHT  
Full Sun 5 or more  
Part Sun 2 – 5  
Shade 2 or less

SOIL MOISTURE  
Dry soil feels dry and dusty or is cracked or difficult to dig  
Medium soil is moist 4 – 6 inches down  
Wet water stands in yard for several days after a heavy rain

© Justin Meissen

© Frank Mayfield

© USFWS Mountain-Prairie

© Danada Flowers

# FULL SUN

ITEM #

PLANT

HEIGHT &  
SPREAD

LIGHT

SOIL  
MOISTUREBLOOM TIME  
& COLOR

SIZE

PRICE



17

prairie cinquefoil  
*Potentilla arguta*

H 2 – 3 ft  
S 1.5 – 2 ft

full sun

dry – medium

Jul – Aug  
white

Pint

\$5



18

prairie coreopsis  
*Coreopsis palmata*

H 2 – 3 ft  
S 0.5 – 1 ft

full sun

dry – medium

Jun – Aug  
yellow

pint

\$5



19

prairie dock  
*Silphium terebinthinaceum*

H 3 – 10 ft  
S 1 – 3 ft

full sun

medium

Jul – Sep  
yellow

pint

\$5

20  
21

prairie smoke  
*Geum triflorum*

H 0.5 – 1 ft  
S 0.5 – 1 ft

full sun

dry

Apr – Jun  
pink-purple

pint  
gallon

\$5  
\$10



22

purple prairie clover  
*Dalea purpurea*

H 1 – 3 ft  
S 1 – 2 ft

full sun

dry – medium

Jul – Sep  
purple

pint

\$5

LIGHT  
Full Sun 5 or more  
Part Sun 2 – 5  
Shade 2 or less

SOIL MOISTURE  
Dry soil feels dry and dusty or is cracked or difficult to dig  
Medium soil is moist 4 – 6 inches down  
Wet water stands in yard for several days after a heavy rain



Forest Preserve District of DuPage County

# FULL SUN

ITEM #

PLANT

HEIGHT &  
SPREAD

LIGHT

SOIL  
MOISTURE

BLOOM TIME  
& COLOR

SIZE

PRICE

23

pussy toes  
*Antennaria plantaginifolia*

H 0.5 – 1 ft  
S 1 – 2 ft

full sun

dry

Apr – Jun  
white

pint

\$5

24

queen of the prairie  
*Filipendula rubra*

H 3 – 5 ft  
S 3 – 4 ft

full sun

medium – wet

Jun – Aug  
pink

pint

\$5

25

rattlesnake master  
*Eryngium yuccifolium*

H 3 – 5 ft  
S 2 – 3 ft

full sun

dry – medium

Jul – Sep  
white

pint

\$5

26

rough blazing star  
*Liatris aspera*

H 2 – 4 ft  
S 1 – 1.5 ft

full sun

dry – medium

Jul – Sep  
purple

pint

\$5

27

showy goldenrod  
*Solidago speciosa*

H 2 – 3 ft  
S 2 – 3 ft

full sun

dry – medium

Aug – Oct  
yellow

pint

\$5

LIGHT  
Full Sun 5 or more  
Part Sun 2 – 5  
Shade 2 or less

SOIL MOISTURE  
Dry soil feels dry and dusty or is cracked or difficult to dig  
Medium soil is moist 4 – 6 inches down  
Wet water stands in yard for several days after a heavy rain



Forest Preserve District of DuPage County

# FULL SUN

ITEM #

PLANT

HEIGHT &  
SPREAD

LIGHT

SOIL  
MOISTURE

BLOOM TIME  
& COLOR

SIZE

PRICE



28

showy tick trefoil  
*Desmodium canadense*

H 3 – 6 ft  
S 1.5 – 2 ft

full sun

dry

Jul – Aug  
pink-purple

pint

\$5



29

stiff goldenrod  
*Solidago rigida*

H 3 – 5 ft  
S 1.5 – 2.5 ft

full sun

medium

Aug – Oct  
yellow

pint

\$5



30

white wild indigo  
*Baptisia lactea*

H 3 – 4 ft  
S 1.5 – 3 ft

full sun

dry – medium

Jun – Jul  
white

pint

\$5



31

wild quinine  
*Parthenium integrifolium*

H 3 – 6 ft  
S 1.5 – 2 ft

full sun

dry

Jun – Aug  
white

pint

\$5



32

yellow coneflower  
*Ratibida pinnata*

H 3 – 5 ft  
S 1.5 – 2 ft

full sun

medium

Jul – Sep  
yellow

pint

\$5

LIGHT  
Full Sun 5 or more  
Part Sun 2 – 5  
Shade 2 or less

SOIL MOISTURE  
Dry soil feels dry and dusty or is cracked or difficult to dig  
Medium soil is moist 4 – 6 inches down  
Wet water stands in yard for several days after a heavy rain



Forest Preserve District of DuPage County

# PART SUN

ITEM #

PLANT

HEIGHT &  
SPREAD

LIGHT

SOIL  
MOISTURE

BLOOM TIME  
& COLOR

SIZE

PRICE



33

bottle gentian  
*Gentiana andrewsii*

H 1.5 – 2 ft  
S 1 – 1.5 ft

part sun –  
full sun

medium  
– wet

Aug – Sep  
blue

pint

\$5



34  
35

cardinal flower  
*Lobelia cardinalis*

H 2 – 4 ft  
S 1 – 2 ft

part sun –  
full sun

medium – wet

Jul – Sep  
red

pint  
gallon

\$5  
\$10



36

common blue-eyed grass  
(eastern blue-eyed grass)  
*Sisyrinchium albidum*

H 1 – 2 ft  
S 0.5 – 1 ft

part sun –  
full sun

dry –  
medium dry

May – Jun  
blue-white

pint

\$5



37

common boneset  
*Eupatorium perfoliatum*

H 3 – 4 ft  
S 3 – 4 ft

part sun –  
full sun

wet

Jul – Sep  
white

pint

\$5



38

common spiderwort  
(Ohio spiderwort)  
*Tradescantia ohiensis*

H 2 – 4 ft  
S 1.5 – 2.5 ft

part sun –  
full sun

dry –  
medium wet

May – Jul  
blue

pint

\$5

LIGHT  
Full Sun 5 or more  
Part Sun 2 – 5  
Shade 2 or less

SOIL MOISTURE  
Dry soil feels dry and dusty or is cracked or difficult to dig  
Medium soil is moist 4 – 6 inches down  
Wet water stands in yard for several days after a heavy rain

# PART SUN

ITEM #

PLANT

HEIGHT &  
SPREAD

LIGHT

SOIL  
MOISTURE

BLOOM TIME  
& COLOR

SIZE

PRICE

39

cream gentian  
*Gentiana alba*

H 2 – 3 ft  
S 0.5 – 1.5 ft

part sun –  
full sun

medium –  
medium wet

Aug – Oct  
white

pint

\$5

40

cream wild indigo  
*Baptisia leucophaea*

H 1 – 2 ft  
S 1 – 3 ft

part sun

medium – dry

May – Jun  
cream

pint

\$5

41

Culver's root  
*Veronicastrum virginicum*

H 3 – 6 ft  
S 2 – 4 ft

part sun –  
full sun

medium

Jun – Aug  
white

pint

\$5

42

false aster  
*Boltonia asteroides*

H 5 – 6 ft  
S 2 – 4 ft

part sun –  
full sun

medium dry –  
medium wet

Aug – Sep  
white

pint

\$5

43

foxglove beardtongue  
*Penstemon digitalis*

H 2 – 4 ft  
S 1.5 – 2 ft

part sun –  
full sun

dry –  
medium wet

Jun – Jul  
white

pint

\$5

LIGHT  
Full Sun 5 or more  
Part Sun 2 – 5  
Shade 2 or less

SOIL MOISTURE  
Dry soil feels dry and dusty or is cracked or difficult to dig  
Medium soil is moist 4 – 6 inches down  
Wet water stands in yard for several days after a heavy rain



Forest Preserve District of DuPage County

# PART SUN

ITEM #

PLANT

HEIGHT &  
SPREAD

LIGHT

SOIL  
MOISTURE

BLOOM TIME  
& COLOR

SIZE

PRICE



44

grass-leaved goldenrod  
*Euthamia graminifolia*

H 3 – 4 ft  
S 1.5 – 2 ft

part sun –  
full sun

medium – wet

Sep – Oct  
yellow

pint

\$5



45

great blue lobelia  
*Lobelia siphilitica*

H 2 – 3 ft  
S 1 – 1.5 ft

part sun –  
full sun

medium – wet

Jul – Sep  
blue

pint

\$5



46

green dragon  
*Arisaema dracontium*

H 1 – 3 ft  
S 1 – 1.5 ft

part sun –  
shade

medium – wet

May – Jun  
light green

pint

\$5



47

Jacob's ladder  
*Polemonium reptans*

H 1 – 1.5 ft  
S 1 – 1.5 ft

part sun –  
shade

dry –  
medium wet

Apr – Jun  
blue

pint

\$5



48

marsh blazing star  
*Liatris spicata*

H 3 – 5 ft  
S 1 – 1.5 ft

part sun –  
full sun

medium – wet

Jul – Sep  
purple

pint

\$5

LIGHT  
Full Sun 5 or more  
Part Sun 2 – 5  
Shade 2 or less

SOIL MOISTURE  
Dry soil feels dry and dusty or is cracked or difficult to dig  
Medium soil is moist 4 – 6 inches down  
Wet water stands in yard for several days after a heavy rain

## PART SUN

ITEM #

PLANT

HEIGHT &  
SPREAD

LIGHT

SOIL  
MOISTUREBLOOM TIME  
& COLOR

SIZE

PRICE



49

marsh marigold  
*Caltha palustris*H 1 – 1.5 ft  
S 1 – 1.5 ftpart sun –  
full sun

wet

Apr – Jun  
yellow

pint

\$5



50

meadow anemone  
*Anemone canadensis*H 1 – 2 ft  
S 2 – 2.5 ftpart sun –  
full sun

medium – wet

Apr – Jun  
white

pint

\$5



51

monkey flower  
*Mimulus ringens*H 1 – 3 ft  
S 0.75 – 1 ftpart sun –  
full sun

medium – wet

Jun – Sep  
lilac-purple

pint

\$5



52

nodding wild onion  
*Allium cernuum*H 1 – 1.5 ft  
S 0.25 – 0.5 ftpart sun –  
full sundry –  
medium wetJul – Aug  
pink

pint

\$5



53

pale purple coneflower  
*Echinacea pallida*H 2 – 4 ft  
S 1 – 1.5 ftpart sun –  
full sundry –  
medium wetJun – Jul  
lavender

pint

\$5

LIGHT  
Full Sun 5 or more  
Part Sun 2 – 5  
Shade 2 or less

SOIL MOISTURE  
Dry soil feels dry and dusty or is cracked or difficult to dig  
Medium soil is moist 4 – 6 inches down  
Wet water stands in yard for several days after a heavy rain



# PART SUN

ITEM #

PLANT

HEIGHT &  
SPREAD

LIGHT

SOIL  
MOISTURE

BLOOM TIME  
& COLOR

SIZE

PRICE



54

prairie loosestrife  
(narrow-leaved loosestrife)  
*Lysimachia quadriflora*

H 2 – 3 ft  
S 2 – 3 ft

part sun –  
full sun

medium

Jun – Aug  
yellow

pint

\$5



55

prairie phlox  
*Phlox pilosa*

H 1 – 1.5 ft  
S 1 – 1.5 ft

part sun –  
full sun

dry –  
medium dry

May – Jul  
pink

pint

\$5



56

prairie sunflower  
*Helianthus pauciflorus*

H 4 – 5 ft  
S 2 – 4 ft

part sun –  
full sun

dry – medium

Jul – Oct  
yellow

pint

\$5



57  
58

purple coneflower  
*Echinacea purpurea*

H 2 – 4 ft  
S 2 – 3 ft

part sun –  
full sun

dry – medium

Jul – Aug  
purple

pint  
gallon

\$5  
\$10



59

purple joe pye weed  
*Eutrochium purpureum*

H 3 – 6 ft  
S 2 – 4 ft

part sun –  
full sun

medium – wet

Jul – Sep  
lavender

pint

\$5

LIGHT  
Full Sun 5 or more  
Part Sun 2 – 5  
Shade 2 or less

SOIL MOISTURE  
Dry soil feels dry and dusty or is cracked or difficult to dig  
Medium soil is moist 4 – 6 inches down  
Wet water stands in yard for several days after a heavy rain

# PART SUN

ITEM #

PLANT

HEIGHT &  
SPREAD

LIGHT

SOIL  
MOISTURE

BLOOM TIME  
& COLOR

SIZE

PRICE



60

royal catchfly  
*Silene regia*

H 2 – 4 ft  
S 1.5 ft– 2 ft

part sun –  
full sun

dry –  
medium wet

Jun – Jul  
red

pint

\$5



61

shooting star  
*Dodecatheon meadia*

H 1 – 2 ft  
S 0.75 – 1 ft

part sun –  
full sun

medium

Apr – Jun  
white &  
lavender

pint

\$5



62

Short's aster  
*Symphyotrichum shortii*

H 2 – 3 ft  
S 2 – 3 ft

part sun –  
shade

medium

Aug – Oct  
purple

pint

\$5



63

sky blue aster  
*Symphyotrichum oolentangiense*

H 2 – 3 ft  
S 1.5 – 2.5 ft

part sun –  
full sun

dry – medium

Aug – Oct  
blue

pint

\$5



64

starry campion  
*Silene stellata*

H 1.5 – 2 ft  
S 0.5 – 1 ft

full sun –  
part sun

medium –  
medium wet

Jun – Jul  
white

pint

\$5

LIGHT  
Full Sun 5 or more  
Part Sun 2 – 5  
Shade 2 or less

SOIL MOISTURE  
Dry soil feels dry and dusty or is cracked or difficult to dig  
Medium soil is moist 4 – 6 inches down  
Wet water stands in yard for several days after a heavy rain

# PART SUN

ITEM #

PLANT

HEIGHT &  
SPREAD

LIGHT

SOIL  
MOISTURE

BLOOM TIME  
& COLOR

SIZE

PRICE



65

starry false  
Solomon's seal  
*Maianthemum stellatum*

H 1 – 2 ft  
S 0.75 – 1.5 ft

part sun –  
shade

medium

May – Jun  
white

pint

\$5



66

swamp rose mallow  
*Hibiscus moscheutos*

H 4 – 6 ft  
S 3 ft– 4 ft

part sun –  
full sun

wet

Jul – Sep  
pink – white

pint

\$5



67

sweet black-eyed Susan  
*Rudbeckia subtomentosa*

H 3 – 5 ft  
S 1 – 2 ft

part sun –  
full sun

medium

Aug – Oct  
yellow & brown

pint

\$5



68

tall bellflower  
*Campanulastrum americana*

H 3 – 4 ft  
S 1.5 – 2 ft

part sun –  
shade

medium – wet

Jul – Sep  
purple

pint

\$5



69

turk's cap lily  
(Michigan lily)  
*Lilium michiganense*

H 2 – 5 ft  
S 1 – 2 ft

part sun –  
full sun

medium – wet

Jun – Aug  
orange

pint

\$5

LIGHT  
Full Sun 5 or more  
Part Sun 2 – 5  
Shade 2 or less

SOIL MOISTURE  
Dry soil feels dry and dusty or is cracked or difficult to dig  
Medium soil is moist 4 – 6 inches down  
Wet water stands in yard for several days after a heavy rain

# PART SUN

ITEM #

PLANT

HEIGHT &  
SPREAD

LIGHT

SOIL  
MOISTURE

BLOOM TIME  
& COLOR

SIZE

PRICE



70

white prairie clover  
*Dalea candida*

H 1 – 3 ft  
S 1 – 2 ft

part sun –  
full sun

dry –  
medium wet

Jun – Sep  
white

pint

\$5



71  
72

wild bergamot  
*Monarda fistulosa*

H 2 – 4 ft  
S 2 – 3 ft

part sun –  
full sun

dry – medium

Jul – Sep  
lavender

pint  
gallon

\$5  
\$10



73  
74

wild columbine  
*Aquilegia canadensis*

H 1 – 3 ft  
S 1 – 1.5 ft

part sun –  
shade

medium

Apr – Jun  
red & yellow

pint  
gallon

\$5  
\$10



75  
76

wild geranium  
*Geranium maculatum*

H 1.5 – 2 ft  
S 1 – 1.5 ft

part sun –  
shade

medium

Apr – Jul  
pink

pint  
gallon

\$5  
\$10



77

wild golden glow  
(green-headed coneflower)  
*Rudbeckia laciniata*

H 4 – 7 ft  
S 2 – 4 ft

part sun –  
shade

medium – wet

Jul – Oct  
yellow

pint

\$5

LIGHT  
Full Sun 5 or more  
Part Sun 2 – 5  
Shade 2 or less

SOIL MOISTURE  
Dry soil feels dry and dusty or is cracked or difficult to dig  
Medium soil is moist 4 – 6 inches down  
Wet water stands in yard for several days after a heavy rain



Forest Preserve District of DuPage County

# PART SUN

ITEM #

PLANT

HEIGHT &  
SPREAD

LIGHT

SOIL  
MOISTURE

BLOOM TIME  
& COLOR

SIZE

PRICE



78

wild hyacinth  
*Camassia scilloides*

H 1 – 3 ft  
S 1 – 2 ft

part sun –  
full sun

dry – medium

May – Jun  
white/blue/  
purple

pint

\$5



79

wild petunia  
(hairy ruellia)  
*Ruellia humilis*

H 1 – 2 ft  
S 1.5 – 2 ft

part sun –  
full sun

dry –  
medium dry

Jun – Aug  
violet

pint

\$5



80

wild stonecrop  
*Sedum ternatum*

H 0.5 ft  
S 0.5 – 1 ft

part – full sun

dry – medium

Apr – May  
white

pint

\$5



81

yellow giant hyssop  
*Agastache nepetoides*

H 4 – 6 ft  
S 1 – 3 ft

part sun –  
full sun

dry –  
medium wet

Jul – Sep  
violet

pint

\$5



82

zigzag goldenrod  
*Solidago flexicaulis*

H 1 – 3 ft  
S 1 – 2 ft

part sun –  
shade

dry – wet

Aug – Sep  
yellow

pint

\$5

LIGHT  
Full Sun 5 or more  
Part Sun 2 – 5  
Shade 2 or less

SOIL MOISTURE  
Dry soil feels dry and dusty or is cracked or difficult to dig  
Medium soil is moist 4 – 6 inches down  
Wet water stands in yard for several days after a heavy rain

# SHADE

ITEM #

PLANT

HEIGHT &  
SPREAD

LIGHT

SOIL  
MOISTURE

BLOOM TIME  
& COLOR

SIZE

PRICE



83

big-leaved aster  
*Eurybia macrophylla*

H 1 – 3 ft  
S 3 ft– 4 ft

shade –  
part sun

medium – wet

Jul – Sep  
pale blue

pint

\$5



84

bloodroot  
*Sanguinaria canadensis*

H 0.5 – 0.75 ft  
S 0.25 – 0.5 ft

shade

medium

Mar – Apr  
white

pint

\$5



85

blue cohosh  
*Caulophyllum thalictroides*

H 1 – 3 ft  
S 1.5 – 2 ft

shade

medium

Mar – May  
yellow-green

gallon

\$10



86

celandine poppy  
(wood poppy)  
*Stylophorum diphyllum*

H 1 – 1.5 ft  
S 0.75 – 1 ft

shade –  
part sun

medium –  
medium wet

Apr – Jun  
yellow

pint

\$5



87

elm-leaved goldenrod  
*Solidago ulmifolia*

H 2 – 4 ft  
S 1.5 – 2 ft

shade –  
part sun

dry – medium

Jul – Oct  
yellow

pint

\$5

LIGHT  
Full Sun 5 or more  
Part Sun 2 – 5  
Shade 2 or less

SOIL MOISTURE  
Dry soil feels dry and dusty or is cracked or difficult to dig  
Medium soil is moist 4 – 6 inches down  
Wet water stands in yard for several days after a heavy rain

# SHADE

ITEM #

PLANT

HEIGHT &  
SPREAD

LIGHT

SOIL  
MOISTURE

BLOOM TIME  
& COLOR

SIZE

PRICE



88

feathery false  
Solomon's seal  
*Maianthemum racemosum*

H 1 – 3 ft  
S 1 – 2 ft

shade –  
part sun

medium wet

May – Jun  
white

pint

\$5



89

jack-in-the-pulpit  
*Arisaema triphyllum*

H 1 – 2 ft  
S 1 – 1.5 ft

shade –  
part sun

medium – wet

Apr – May  
green & purple

pint

\$5



90

mayapple  
*Podophyllum peltatum*

H 1 – 1.5 ft  
S 0.75 – 1 ft

shade –  
part sun

medium wet

May  
white

gallon

\$10



91

smooth Solomon's seal  
*Polygonatum biflorum*

H 1 – 3 ft  
S 1 – 1.5 ft

shade –  
part sun

medium – wet

May – Jul  
greenish white

pint

\$5



92

turtlehead  
*Chelone glabra*

H 2 – 3 ft  
S 1.5 – 2.5 ft

shade –  
part sun

medium – wet

Jul – Sep  
cream

pint

\$5

LIGHT  
Full Sun 5 or more  
Part Sun 2 – 5  
Shade 2 or less

SOIL MOISTURE  
Dry soil feels dry and dusty or is cracked or difficult to dig  
Medium soil is moist 4 – 6 inches down  
Wet water stands in yard for several days after a heavy rain



Forest Preserve District of DuPage County

# SHADE

ITEM #

PLANT

HEIGHT &  
SPREAD

LIGHT

SOIL  
MOISTURE

BLOOM TIME  
& COLOR

SIZE

PRICE



93  
94

Virginia bluebells  
*Mertensia virginica*

H 1.5 – 2 ft  
S 1.5 – 2 ft

shade –  
part sun

wet

Apr – May  
blue

pint  
gallon

\$5  
\$10



95

Virginia waterleaf  
*Hydrophyllum virginianum*

H 1.5 – 2 ft  
S 1 – 3 ft

shade

medium

Apr – May  
blue

pint

\$5



96

white snakeroot  
*Ageratina altissima*

H 2 – 3 ft  
S 1.5 – 2 ft

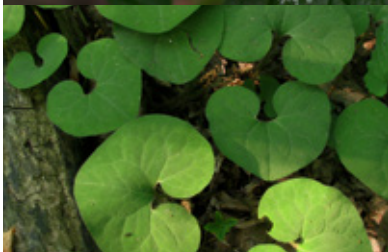
shade –  
part sun

medium

Aug – Oct  
white

pint

\$5



97

wild ginger  
*Asarum canadense*

H 0.5 – 1 ft  
S 1 – 1.5 ft

shade

medium – wet

Apr – Jun  
dark red

pint

\$5



98  
99

woodland phlox  
*Phlox divaricata*

H 0.75 – 1 ft  
S 0.75 – 1 ft

shade –  
part sun

medium

Apr – Jun  
violet blue

**SOLD OUT**  
pint  
gallon

~~\$5~~  
\$10

LIGHT  
Full Sun 5 or more  
Part Sun 2 – 5  
Shade 2 or less

SOIL MOISTURE  
Dry soil feels dry and dusty or is cracked or difficult to dig  
Medium soil is moist 4 – 6 inches down  
Wet water stands in yard for several days after a heavy rain

# MILKWEEDS

ITEM #

PLANT

HEIGHT &  
SPREAD

LIGHT

SOIL  
MOISTURE

BLOOM TIME  
& COLOR

SIZE

PRICE



100  
101

butterfly weed  
*Asclepias tuberosa*

H 2 – 3 ft  
S 1 – 2 ft

full sun

medium

Jun – Aug  
orange

pint  
gallon

\$5  
\$10



102

common milkweed  
*Asclepias syriaca*

H 3 – 5 ft  
S 1 – 2 ft

full sun

medium – dry

Jun – Aug  
pink

pint

\$5



103

poke milkweed  
*Asclepias exaltata*

H 3 – 5 ft  
S 1 – 2 ft

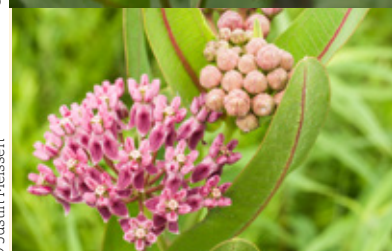
part sun –  
shade

medium – dry

Jul – Aug  
white

pint

\$5



104

prairie milkweed  
*Asclepias sullivantii*

H 3 – 5 ft  
S 1 ft

full sun

medium

Jun – Aug  
pink & yellow

pint

\$5



105  
106

swamp milkweed  
*Asclepias incarnata*

H 3 – 4 ft  
S 1.5 – 2 ft

full sun –  
part sun

wet –  
medium wet

Jun – Aug  
red-pink

pint  
gallon

\$5  
\$10

LIGHT  
Full Sun 5 or more  
Part Sun 2 – 5  
Shade 2 or less

SOIL MOISTURE  
Dry soil feels dry and dusty or is cracked or difficult to dig  
Medium soil is moist 4 – 6 inches down  
Wet water stands in yard for several days after a heavy rain



Forest Preserve District of DuPage County

# MILKWEEDS

ITEM #

PLANT

HEIGHT &  
SPREAD

LIGHT

SOIL  
MOISTURE

BLOOM TIME  
& COLOR

SIZE

PRICE

107

whorled milkweed  
*Asclepias verticillata*

H 1.5 – 2.5 ft  
S 1 – 2 ft

full sun –  
part sun

dry – medium

Jul – Sep  
white

pint

\$5

© Joshua Mayer



**Forest Preserve District of DuPage County**

LIGHT	Hours of Sun Each Day
Full Sun	5 or more
Part Sun	2 – 5
Shade	2 or less

SOIL MOISTURE	
Dry	soil feels dry and dusty or is cracked or difficult to dig
Medium	soil is moist 4 – 6 inches down
Wet	water stands in yard for several days after a heavy rain

GRASSES		ITEM #	PLANT	HEIGHT & SPREAD	LIGHT	SOIL MOISTURE	BLOOM TIME & COLOR	SIZE	PRICE
		108 109	big bluestem <i>Andropogon gerardii</i>	H 3 – 8 ft S 2 – 3 ft	full sun	dry – medium	Aug – Sep purplish red	pint gallon	\$5 \$10
		110	bottlebrush grass <i>Elymus hystrix</i>	H 2 – 3 ft S 1 – 1.5 ft	part sun – full sun	dry – medium	Jun – Jul green-brown	pint	\$5
		111	common oak sedge <i>Carex pensylvanica</i>	H 0.75 – 1 ft S 1.5 – 2 ft	shade – part sun	dry	Apr – May green	pint	\$5
		112	curly-styled wood sedge <i>Carex rosea</i>	H 0.5 – 1 ft S 0.5 – 1.5 ft	shade – part sun	dry – medium	May – Jun green	pint	\$5
		113	Indian grass <i>Sorghastrum nutans</i>	H 3 – 6 ft S 2 – 3 ft	full sun	dry – medium wet	Aug – Sep yellow	pint	\$5



LIGHT	Hours of Sun Each Day
Full Sun	5 or more
Part Sun	2 – 5
Shade	2 or less

SOIL MOISTURE	
Dry	soil feels dry and dusty or is cracked or difficult to dig
Medium	soil is moist 4 – 6 inches down
Wet	water stands in yard for several days after a heavy rain

# GRASSES

ITEM #

PLANT

HEIGHT &  
SPREAD

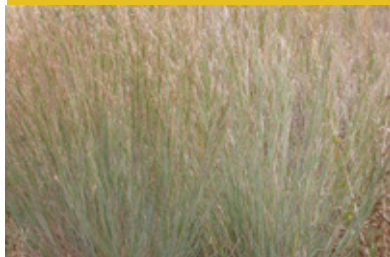
LIGHT

SOIL  
MOISTURE

BLOOM TIME  
& COLOR

SIZE

PRICE



© Matt Lavin

114

little bluestem  
*Schizachyrium scoparium*

H 2 – 3 ft  
S 1.5 – 2 ft

full sun

dry – medium

Aug – Sep  
purple-bronze

pint

\$5



© Matt Lavin

115

long-beaked sedge  
*Carex sprengelii*

H 1.5 – 2 ft  
S 1.5 – 2 ft

shade

medium wet –  
wet

May  
green

pint

\$5



© Lenora (Ellie) Enking

116

palm sedge  
*Carex muskingumensis*

H 2 – 3 Ft  
S 2 – 3 ft

part sun –  
full sun

medium wet

May – July  
brown

pint

\$5



© USFW

117

porcupine grass  
*Hesperostipa spartea*

H 3 – 4 ft  
S 1 ft

part sun –  
full sun

dry – medium

May – Jun  
green

pint

\$5



118

porcupine sedge  
*Carex hystericina*

H 2 – 3 ft  
S 1 – 1.5 ft

part sun –  
full sun

wet

May – Jun  
brown

pint

\$5

LIGHT  
Full Sun 5 or more  
Part Sun 2 – 5  
Shade 2 or less

SOIL MOISTURE  
Dry soil feels dry and dusty or is cracked or difficult to dig  
Medium soil is moist 4 – 6 inches down  
Wet water stands in yard for several days after a heavy rain

# GRASSES

ITEM #

PLANT

HEIGHT &  
SPREAD

LIGHT

SOIL  
MOISTURE

BLOOM TIME  
& COLOR

SIZE

PRICE



119

prairie brome  
*Bromus kalmia*

H 2 – 3 ft  
S 1 – 1.5 ft

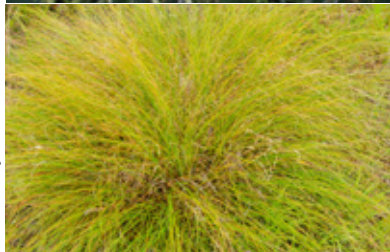
part sun –  
full sun

dry – medium

Jun – Aug  
green

pint

\$5



120  
121

prairie dropseed  
*Sporobolus heterolepis*

H 2 – 3 ft  
S 2 – 3 ft

full sun

dry – medium

Aug – Sep  
pink & brown

pint  
gallon

\$5  
\$10



122

purple love grass  
*Eragrostis spectabilis*

H 1 – 2 ft  
S 1 – 2 ft

full sun

dry – medium

Jul – Aug  
reddish purple

pint

\$5



123

river oats  
*Chasmanthium latifolium*

H 2 – 4 ft  
S 1 – 2.5 ft

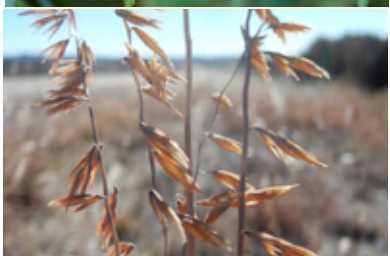
part sun –  
full sun

medium – wet

Aug – Sep  
green

pint

\$5



124

sideoats gramma  
*Bouteloua curtipendula*

H 2 – 3 ft  
S 1.5 – 3 ft

full sun

dry – medium

Jul – Aug  
purplish

pint

\$5

LIGHT  
Full Sun 5 or more  
Part Sun 2 – 5  
Shade 2 or less

SOIL MOISTURE  
Dry soil feels dry and dusty or is cracked or difficult to dig  
Medium soil is moist 4 – 6 inches down  
Wet water stands in yard for several days after a heavy rain

# GRASSES

ITEM #

PLANT

HEIGHT &  
SPREAD

LIGHT

SOIL  
MOISTURE

BLOOM TIME  
& COLOR

SIZE

PRICE



125

straight-styled  
wood sedge  
*Carex radiata*

H 0.75 – 1 ft  
S 0.75 – 1 ft

shade –  
part sun

medium –  
medium wet

Apr – May  
green

pint

\$5



126

switch grass  
*Panicum virgatum*

H 4 – 6 ft  
S 2 – 3 ft

part sun –  
full sun

medium dry  
– medium

Jul  
red

pint

\$5



127

Virginia wild rye  
*Elymus virginicus*

H 3 – 5 ft  
S 1.5 – 2 ft

part sun –  
full sun

dry – medium

Jul – Aug  
green

pint

\$5

© Friends of the Prairie Learning  
Center and Neal Smith NWR  
© Matt Lavin



Forest Preserve District of DuPage County

LIGHT	Hours of Sun Each Day
Full Sun	5 or more
Part Sun	2 – 5
Shade	2 or less

SOIL MOISTURE	
Dry	soil feels dry and dusty or is cracked or difficult to dig
Medium	soil is moist 4 – 6 inches down
Wet	water stands in yard for several days after a heavy rain

# FERNS

ITEM #

PLANT

HEIGHT &  
SPREAD

LIGHT

SOIL  
MOISTURE

BLOOM TIME  
& COLOR

SIZE

PRICE



128

Christmas fern  
*Polystichum acrostichoides*

H 1 ft – 2 ft  
S 1 – 2 ft

shade –  
part sun

dry – medium

nonflowering

gallon

\$10



129

lady fern  
*Athyrium filix-femina*

H 1 – 3 ft  
S 1 – 2.5 ft

shade –  
part sun

medium wet

nonflowering

gallon

\$10



130

ostrich fern  
*Matteuccia struthiopteris*

H 3 – 6 ft  
S 2 – 3 ft

shade –  
part sun

medium – wet

nonflowering

gallon

\$10



131

sensitive fern  
*Onoclea sensibilis*

H 2 – 3 ft  
S 1.5 – 2 ft

shade –  
part sun

medium – wet

nonflowering

gallon

\$10

© NC Orchid

© Peggy A. Lopipieri-Langmo

© harumkoh

© Joshua Mayer



Forest Preserve District of DuPage County

LIGHT  
Full Sun 5 or more  
Part Sun 2 – 5  
Shade 2 or less

SOIL MOISTURE  
Dry soil feels dry and dusty or is cracked or difficult to dig  
Medium soil is moist 4 – 6 inches down  
Wet water stands in yard for several days after a heavy rain

# VINES

ITEM #

PLANT

HEIGHT &  
SPREAD

LIGHT

SOIL  
MOISTURE

BLOOM TIME  
& COLOR

SIZE

PRICE



132

virgin's bower  
*Clematis virginiana*

H 8 - 12 ft  
S 6 - 8 ft

full sun -  
shade

medium -  
medium wet

Jul - Sep  
white

pint

\$5



Forest Preserve District of DuPage County

LIGHT	Hours of Sun Each Day
Full Sun	5 or more
Part Sun	2 - 5
Shade	2 or less

SOIL MOISTURE	
Dry	soil feels dry and dusty or is cracked or difficult to dig
Medium	soil is moist 4 - 6 inches down
Wet	water stands in yard for several days after a heavy rain

# SHRUBS

ITEM #

PLANT

HEIGHT &  
SPREAD

LIGHT

SOIL  
MOISTUREBLOOM TIME  
& COLOR

SIZE

PRICE



133

American hazelnut  
(American filbert)  
*Corylus americana*

H 8 – 10 ft  
S 8 – 10 ft

full sun –  
part sun

medium – wet

Apr  
green

5 gallon

\$20



134

blackhaw  
*Viburnum prunifolium*

H 12 – 15 ft  
S 6 – 12 ft

full sun –  
part sun

dry – medium

May – Jun  
white

5 gallon

\$20



135

buttonbush  
*Cephalanthus occidentalis*

H 8 – 12 ft  
S 6 – 8 ft

full sun –  
part sun

moist

Jun  
white

5 gallon

\$20



136

early wild rose  
*Rosa blanda*

H 3 – 5 ft  
S 3 – 4 ft

full sun –  
part sun

dry – medium

May – Jul  
pink

5 gallon

\$20



137

elderberry  
*Sambucus canadensis*

H 8 – 12 ft  
S 6 – 8 ft

full sun –  
part sun

dry – medium

Jun  
white

5 gallon

\$20

LIGHT	Hours of Sun Each Day
Full Sun	5 or more
Part Sun	2 – 5
Shade	2 or less

SOIL MOISTURE	
Dry	soil feels dry and dusty or is cracked or difficult to dig
Medium	soil is moist 4 – 6 inches down
Wet	water stands in yard for several days after a heavy rain



# SHRUBS

ITEM #

PLANT

HEIGHT &  
SPREAD

LIGHT

SOIL  
MOISTURE

BLOOM TIME  
& COLOR

SIZE

PRICE



138

Illinois rose  
*Rosa setigera*

H 6 – 8 ft  
S 8 – 10 ft

full sun –  
part sun

medium –  
medium wet

Jun  
pink & gold

5 gallon

\$20



139

Kalm's St. John's wort  
*Hypericum kalmianum*

H 2 – 3 ft  
S 2 – 3 ft

full sun

medium wet –  
wet

Jul – Aug  
yellow

5 gallon

\$20



140

New Jersey tea  
*Ceanothus americanus*

H 2 ft  
S 3 ft

full sun –  
part sun

dry – medium

Jun – Aug  
white

5 gallon

\$20



141

red osier dogwood  
*Cornus sericea*

H 8 – 10 ft  
S 2 – 5 ft

part sun –  
full sun

medium – wet

May – Jun  
white

5 gallon

\$20



142

spicebush  
*Lindera benzoin*

H 6 – 12 ft  
S 6 – 12 ft

full sun –  
part sun

medium

Mar  
yellow

5 gallon

\$20

LIGHT  
Full Sun 5 or more  
Part Sun 2 – 5  
Shade 2 or less

SOIL MOISTURE  
Dry soil feels dry and dusty or is cracked or difficult to dig  
Medium soil is moist 4 – 6 inches down  
Wet water stands in yard for several days after a heavy rain

# SHRUBS

ITEM #

PLANT

HEIGHT &  
SPREAD

LIGHT

SOIL  
MOISTURE

BLOOM TIME  
& COLOR

SIZE

PRICE

© Lirley Ashline



143

wild hydrangea  
*Hydrangea arborescens*

H 3 – 5 ft  
S 3 – 5 ft

shade –  
part sun

medium – wet

Jun – Sep  
white

5 gallon

\$20



144

witch hazel  
*Hamamelis virginiana*

H 10 – 15 ft  
S 10 – 25 ft

full sun –  
part sun

medium

Oct – Mar  
yellow

5 gallon

\$20



Forest Preserve District of DuPage County

LIGHT	Hours of Sun Each Day
Full Sun	5 or more
Part Sun	2 – 5
Shade	2 or less

SOIL MOISTURE	
Dry	soil feels dry and dusty or is cracked or difficult to dig
Medium	soil is moist 4 – 6 inches down
Wet	water stands in yard for several days after a heavy rain

# TREES

ITEM #

PLANT

HEIGHT &  
SPREAD

LIGHT

SOIL  
MOISTURE

BLOOM TIME  
& COLOR

SIZE

PRICE



145

blue beech  
(American hornbeam)  
*Carpinus caroliniana*

H 20 – 30 ft  
S 20 – 30 ft

part sun –  
shade

medium – wet

Mar – May  
green

5 gallon

\$25



146

bur oak  
*Quercus macrocarpa*

H 60 – 85 ft  
S 60 – 100 ft

full sun

dry – medium

Apr – May  
green

5 gallon

\$25



147

hackberry  
*Celtis occidentalis*

H 50 – 60 ft  
S 40 – 60 ft

full sun –  
part sun

medium –  
medium wet

Apr – May  
green

5 gallon

\$25



148

Ohio buckeye  
*Aesculus glabra*

H 30 – 60 ft  
S 15 – 30 ft

full sun –  
part sun

medium –  
moist

Mar – Apr  
white

5 gallon

\$25



149

pawpaw  
*Asimina triloba*

H 15 – 30 ft  
S 15 – 30 ft

full sun –  
part sun

medium – wet

Apr – May  
burgundy

5 gallon

\$25

LIGHT  
Full Sun 5 or more  
Part Sun 2 – 5  
Shade 2 or less

SOIL MOISTURE  
Dry soil feels dry and dusty or is cracked or difficult to dig  
Medium soil is moist 4 – 6 inches down  
Wet water stands in yard for several days after a heavy rain



Forest Preserve District of DuPage County

# TREES

ITEM #

PLANT

HEIGHT &  
SPREAD

LIGHT

SOIL  
MOISTURE

BLOOM TIME  
& COLOR

SIZE

PRICE



150

redbud  
*Cercis canadensis*

H 20 – 25 ft  
S 25 – 30 ft

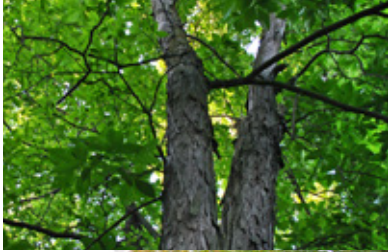
part sun –  
full sun

medium

Apr  
pink

7 gallon  
(at least  
6 ft tall)

\$60



151

shagbark hickory  
*Carya ovata*

H 70 – 90 ft  
S 50 – 70 ft

full sun –  
part sun

medium

Apr – May  
green-yellow

5 gallon

\$25



152

sugar maple  
*Acer saccharum*

H 40 – 80 ft  
S 30 – 60 ft

full sun –  
part sun

medium

Mar – Apr  
yellow-green

5 gallon

\$25



153

white oak  
*Quercus alba*

H 50 – 80 ft  
S 50 – 80 ft

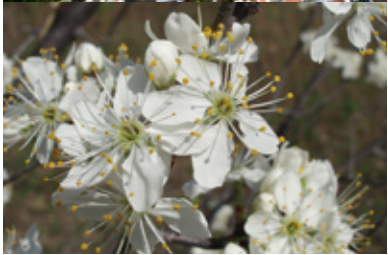
full sun

dry – medium

May  
green

5 gallon

\$25



154

wild plum  
*Prunus americana*

H 15 – 25 ft  
S 15 – 20 ft

full sun –  
part sun

dry – medium

Mar – Apr  
white

5 gallon

\$25

LIGHT  
Full Sun 5 or more  
Part Sun 2 – 5  
Shade 2 or less

SOIL MOISTURE  
Dry soil feels dry and dusty or is cracked or difficult to dig  
Medium soil is moist 4 – 6 inches down  
Wet water stands in yard for several days after a heavy rain



Forest Preserve District of DuPage County