

## UPDATED 2020 Catalog

DuPage Forest Preserves

# NATIVE PLANT SALE

We're changing our sale for 2020. The sale will be preorders with scheduled curbside pickups only. We will not have a tent sale. Please read carefully.

**All orders (five-plant minimum) must be placed via email or phone by May 17.**

- Complete and submit the order form posted at [dupageforest.org/native-plant-sale](http://dupageforest.org/native-plant-sale). We process orders as we receive them, but all are subject to supplier availability.
- Before May 31 you'll receive an invoice via email with steps on how to securely pay for your plants online.
- On June 5 or June 6 (you choose which day) pick up your order at Mayslake Peabody Estate in Oak Brook during the designated time slot below based on the first letter of your last name. Pickups will be curbside with limited person-to-person contact.

**A – H** 9 a.m. – Noon      **I – P** Noon – 3 p.m.      **Q – Z** 3 – 6 p.m.

- We have a great variety of flowers, grasses, shrubs and trees so order today!



**Think global. Plant local.**



Forest Preserve District of DuPage County

# FULL SUN

|  | ITEM # | PLANT   | HEIGHT & SPREAD              | LIGHT    | SOIL MOISTURE | BLOOM TIME & COLOR       | SIZE            | PRICE |
|--|--------|---|------------------------------|----------|---------------|--------------------------|-----------------|-------|
|    | 1      | black-eyed Susan<br><i>Rudbeckia hirta</i>              | H 2 – 3 ft<br>S 1 – 2 ft     | full sun | dry – medium  | Jun – Oct<br>yellow      | <b>SOLD OUT</b> |       |
|    | 2      | blue flag iris<br><i>Iris virginica shrevei</i>         | H 1.5 – 2 ft<br>S 1.5 – 2 ft | full sun | wet           | May – Jul<br>violet blue | pint            | \$5   |
|    | 3      | common ironweed<br><i>Vernonia fasciculata</i>          | H 4 – 6 ft<br>S 1.5 – 3 ft   | full sun | medium        | Jul – Sep<br>purple      | pint            | \$5   |
|   | 4      | common mountain mint<br><i>Pycnanthemum virginianum</i> | H 2 – 3 ft<br>S 1 – 1.5 ft   | full sun | dry – medium  | Jun – Sep<br>white       | pint            | \$5   |
|  | 5      | compass plant<br><i>Silphium laciniatum</i>             | H 3 – 10 ft<br>S 1.5 – 3 ft  | full sun | dry – medium  | Jun – Sep<br>yellow      | pint            | \$5   |

© Danada Flowers



Forest Preserve District of DuPage County

| LIGHT    | Hours of Sun Each Day |
|----------|-----------------------|
| Full Sun | 5 or more             |
| Part Sun | 2 – 5                 |
| Shade    | 2 or less             |

| SOIL MOISTURE |  |
|---------------|--|
| Dry           | soil feels dry and dusty or is cracked or difficult to dig |
| Medium        | soil is moist 4 – 6 inches down                            |
| Wet           | water stands in yard for several days after a heavy rain   |

# FULL SUN

ITEM #

PLANT

HEIGHT &  
SPREAD

LIGHT

SOIL  
MOISTURE

BLOOM TIME  
& COLOR

SIZE

PRICE



6

cup plant  
*Silphium perfoliatum*

H 3 – 10 ft  
S 1 – 3 ft

full sun

medium

Jul – Sep  
yellow

pint

\$5



7

dwarf blazing star  
*Liatris cylindracea*

H 1 – 1.5 ft  
S 1 – 1.5 ft

full sun

dry –  
medium dry

Jul – Sep  
purple

**SOLD OUT**



8

eastern prickly pear cactus  
*Opuntia cespitosa*

H 0.5 – 1 ft  
S 1 – 2 ft

full sun

dry

Jul  
yellow

pint

\$5



9

false sunflower  
*Heliopsis helianthoides*

H 3 – 6 ft  
S 2 – 3 ft

full sun

dry

Jun – Aug  
yellow

pint

\$5



10

flowering spurge  
*Euphorbia corollata*

H 2 – 3 ft  
S 1.5 – 2 ft

full sun

medium

Jun – Jul  
white

pint

\$5

© Joshua Mayer

© Roban Kramer

© Joshua Mayer

© Aaron Carlson



Forest Preserve District of DuPage County

LIGHT  
Full Sun 5 or more  
Part Sun 2 – 5  
Shade 2 or less

SOIL MOISTURE  
Dry soil feels dry and dusty or is cracked or difficult to dig  
Medium soil is moist 4 – 6 inches down  
Wet water stands in yard for several days after a heavy rain



© Brett Whaley

© bwinesett

© lclm1863

© Helena Jacoba

© Danada Flowers

# FULL SUN

ITEM #

PLANT

HEIGHT &  
SPREAD

LIGHT

SOIL  
MOISTUREBLOOM TIME  
& COLOR

SIZE

PRICE



11

large-flowered  
beardtongue  
*Penstemon grandiflorus*

H 2 – 4 ft  
S 1 – 1.5 ft

full sun

dry – medium

May – Jun  
white-pink

**SOLD OUT**

12

lead plant  
*Amorpha canescens*

H 2 – 3 ft  
S 2 – 3 ft

full sun

dry – medium

Jun – Jul  
purple

quart

\$7



13

New England aster  
*Symphyotrichum  
novae-angliae*

H 2 – 5 ft  
S 2 – 3 ft

full sun

medium

Aug – Oct  
purple

**SOLD OUT**

14

obedient plant  
*Physostegia virginiana*

H 3 – 4 ft  
S 2 – 3 ft

full sun

medium

Jul  
pink

pint

\$5



15

prairie blazing star  
*Liatris pycnostachya*

H 2 – 5 ft  
S 1 – 2 ft

full sun

dry – medium

Jul  
lilac purple

pint

\$5

**SOLD OUT**

LIGHT      Hours of Sun Each Day  
Full Sun    5 or more  
Part Sun    2 – 5  
Shade       2 or less

SOIL MOISTURE  
Dry          soil feels dry and dusty or is cracked or difficult to dig  
Medium     soil is moist 4 – 6 inches down  
Wet         water stands in yard for several days after a heavy rain



Forest Preserve District of DuPage County

# FULL SUN

ITEM #

PLANT

HEIGHT &  
SPREAD

LIGHT

SOIL  
MOISTURE

BLOOM TIME  
& COLOR

SIZE

PRICE

© Justin Meissen



17

prairie cinquefoil  
*Potentilla arguta*

H 2 – 3 ft  
S 1.5 – 2 ft

full sun

dry – medium

Jul – Aug  
white

Pint

\$5

© Frank Mayfield



18

prairie coreopsis  
*Coreopsis palmata*

H 2 – 3 ft  
S 0.5 – 1 ft

full sun

dry – medium

Jun – Aug  
yellow

**SOLD OUT**

© USFWS Mountain-Prairie



19

prairie dock  
*Silphium terebinthinaceum*

H 3 – 10 ft  
S 1 – 3 ft

full sun

medium

Jul – Sep  
yellow

pint

\$5

© Danada Flowers



20  
21

prairie smoke  
*Geum triflorum*

H 0.5 – 1 ft  
S 0.5 – 1 ft

full sun

dry

Apr – Jun  
pink-purple

pint  
gallon

\$5  
\$10

22

purple prairie clover  
*Dalea purpurea*

H 1 – 3 ft  
S 1 – 2 ft

full sun

dry – medium

Jul – Sep  
purple

pint

\$5



Forest Preserve District of DuPage County

LIGHT  
Full Sun 5 or more  
Part Sun 2 – 5  
Shade 2 or less

SOIL MOISTURE  
Dry soil feels dry and dusty or is cracked or difficult to dig  
Medium soil is moist 4 – 6 inches down  
Wet water stands in yard for several days after a heavy rain

# FULL SUN

ITEM #

PLANT

HEIGHT &  
SPREAD

LIGHT

SOIL  
MOISTURE

BLOOM TIME  
& COLOR

SIZE

PRICE



23

pussy toes  
*Antennaria plantaginifolia*

H 0.5 – 1 ft  
S 1 – 2 ft

full sun

dry

Apr – Jun  
white

pint

\$5



~~24~~

queen of the prairie  
*Filipendula rubra*

H 3 – 5 ft  
S 3 – 4 ft

full sun

medium – wet

Jun – Aug  
pink

**SOLD OUT**



25

rattlesnake master  
*Eryngium yuccifolium*

H 3 – 5 ft  
S 2 – 3 ft

full sun

dry – medium

Jul – Sep  
white

pint

\$5



26

rough blazing star  
*Liatris aspera*

H 2 – 4 ft  
S 1 – 1.5 ft

full sun

dry – medium

Jul – Sep  
purple

pint

\$5



27

showy goldenrod  
*Solidago speciosa*

H 2 – 3 ft  
S 2 – 3 ft

full sun

dry – medium

Aug – Oct  
yellow

pint

\$5

LIGHT  
Full Sun 5 or more  
Part Sun 2 – 5  
Shade 2 or less

SOIL MOISTURE  
Dry soil feels dry and dusty or is cracked or difficult to dig  
Medium soil is moist 4 – 6 inches down  
Wet water stands in yard for several days after a heavy rain



# FULL SUN

ITEM #

PLANT

HEIGHT &  
SPREAD

LIGHT

SOIL  
MOISTURE

BLOOM TIME  
& COLOR

SIZE

PRICE



28

showy tick trefoil  
*Desmodium canadense*

H 3 – 6 ft  
S 1.5 – 2 ft

full sun

dry

Jul – Aug  
pink-purple

pint

\$5



29

stiff goldenrod  
*Solidago rigida*

H 3 – 5 ft  
S 1.5 – 2.5 ft

full sun

medium

Aug – Oct  
yellow

pint

\$5



30

white wild indigo  
*Baptisia lactea*

H 3 – 4 ft  
S 1.5 – 3 ft

full sun

dry – medium

Jun – Jul  
white

pint

\$5



31

wild quinine  
*Parthenium integrifolium*

H 3 – 6 ft  
S 1.5 – 2 ft

full sun

dry

Jun – Aug  
white

pint

\$5



32

yellow coneflower  
*Ratibida pinnata*

H 3 – 5 ft  
S 1.5 – 2 ft

full sun

medium

Jul – Sep  
yellow

pint

\$5

LIGHT  
Full Sun 5 or more  
Part Sun 2 – 5  
Shade 2 or less

SOIL MOISTURE  
Dry soil feels dry and dusty or is cracked or difficult to dig  
Medium soil is moist 4 – 6 inches down  
Wet water stands in yard for several days after a heavy rain



Forest Preserve District of DuPage County

# PART SUN

ITEM #

PLANT

HEIGHT &  
SPREAD

LIGHT

SOIL  
MOISTURE

BLOOM TIME  
& COLOR

SIZE

PRICE



~~33~~

bottle gentian  
*Gentiana andrewsii*

H 1.5 – 2 ft  
S 1 – 1.5 ft

part sun –  
full sun

medium  
– wet

Aug – Sep  
blue

**UNAVAILABLE**



~~34~~

cardinal flower  
*Lobelia cardinalis*

H 2 – 4 ft  
S 1 – 2 ft

part sun –  
full sun

medium – wet

Jul – Sep  
red

pint  
**SOLD OUT**



36

common blue-eyed grass  
(eastern blue-eyed grass)  
*Sisyrinchium albidum*

H 1 – 2 ft  
S 0.5 – 1 ft

part sun –  
full sun

dry –  
medium dry

May – Jun  
blue-white

pint

\$5



37

common boneset  
*Eupatorium perfoliatum*

H 3 – 4 ft  
S 3 – 4 ft

part sun –  
full sun

wet

Jul – Sep  
white

pint

\$5



~~38~~

common spiderwort  
(Ohio spiderwort)  
*Tradescantia ohiensis*

H 2 – 4 ft  
S 1.5 – 2.5 ft

part sun –  
full sun

dry –  
medium wet

May – Jul  
blue

**SOLD OUT**

LIGHT  
Full Sun 5 or more  
Part Sun 2 – 5  
Shade 2 or less

SOIL MOISTURE  
Dry soil feels dry and dusty or is cracked or difficult to dig  
Medium soil is moist 4 – 6 inches down  
Wet water stands in yard for several days after a heavy rain



# PART SUN

ITEM #

PLANT

HEIGHT &  
SPREAD

LIGHT

SOIL  
MOISTURE

BLOOM TIME  
& COLOR

SIZE

PRICE

39

cream gentian  
*Gentiana alba*

H 2 – 3 ft  
S 0.5 – 1.5 ft

part sun –  
full sun

medium –  
medium wet

Aug – Oct  
white

pint

\$5

40

cream wild indigo  
*Baptisia leucophaea*

H 1 – 2 ft  
S 1 – 3 ft

part sun

medium – dry

May – Jun  
cream

pint

\$5

41

Culver's root  
*Veronicastrum virginicum*

H 3 – 6 ft  
S 2 – 4 ft

part sun –  
full sun

medium

Jun – Aug  
white

pint

\$5

42

false aster  
*Boltonia asteroides*

H 5 – 6 ft  
S 2 – 4 ft

part sun –  
full sun

medium dry –  
medium wet

Aug – Sep  
white

pint

\$5

43

foxglove beardtongue  
*Penstemon digitalis*

H 2 – 4 ft  
S 1.5 – 2 ft

part sun –  
full sun

dry –  
medium wet

Jun – Jul  
white

pint

\$5

LIGHT  
Full Sun 5 or more  
Part Sun 2 – 5  
Shade 2 or less

SOIL MOISTURE  
Dry soil feels dry and dusty or is cracked or difficult to dig  
Medium soil is moist 4 – 6 inches down  
Wet water stands in yard for several days after a heavy rain



Forest Preserve District of DuPage County

# PART SUN

ITEM #

PLANT

HEIGHT &  
SPREAD

LIGHT

SOIL  
MOISTURE

BLOOM TIME  
& COLOR

SIZE

PRICE



44

grass-leaved goldenrod  
*Euthamia graminifolia*

H 3 – 4 ft  
S 1.5 – 2 ft

part sun –  
full sun

medium – wet

Sep – Oct  
yellow

pint

\$5



45

great blue lobelia  
*Lobelia siphilitica*

H 2 – 3 ft  
S 1 – 1.5 ft

part sun –  
full sun

medium – wet

Jul – Sep  
blue

pint

\$5



46

green dragon  
*Arisaema dracontium*

H 1 – 3 ft  
S 1 – 1.5 ft

part sun –  
shade

medium – wet

May – Jun  
light green

pint

\$5



47

Jacob's ladder  
*Polemonium reptans*

H 1 – 1.5 ft  
S 1 – 1.5 ft

part sun –  
shade

dry –  
medium wet

Apr – Jun  
blue

pint

\$5



48

marsh blazing star  
*Liatris spicata*

H 3 – 5 ft  
S 1 – 1.5 ft

part sun –  
full sun

medium – wet

Jul – Sep  
purple

pint

\$5

LIGHT  
Full Sun 5 or more  
Part Sun 2 – 5  
Shade 2 or less

SOIL MOISTURE  
Dry soil feels dry and dusty or is cracked or difficult to dig  
Medium soil is moist 4 – 6 inches down  
Wet water stands in yard for several days after a heavy rain

## PART SUN

ITEM #

PLANT

HEIGHT &  
SPREAD

LIGHT

SOIL  
MOISTUREBLOOM TIME  
& COLOR

SIZE

PRICE

~~49~~marsh marigold  
*Caltha palustris*H 1 – 1.5 ft  
S 1 – 1.5 ftpart sun –  
full sun

wet

Apr – Jun  
yellow**SOLD OUT**

50

meadow anemone  
*Anemone canadensis*H 1 – 2 ft  
S 2 – 2.5 ftpart sun –  
full sun

medium – wet

Apr – Jun  
white

pint

\$5



51

monkey flower  
*Mimulus ringens*H 1 – 3 ft  
S 0.75 – 1 ftpart sun –  
full sun

medium – wet

Jun – Sep  
lilac-purple

pint

\$5

~~52~~nodding wild onion  
*Allium cernuum*H 1 – 1.5 ft  
S 0.25 – 0.5 ftpart sun –  
full sundry –  
medium wetJul – Aug  
pink**SOLD OUT**~~53~~pale purple coneflower  
*Echinacea pallida*H 2 – 4 ft  
S 1 – 1.5 ftpart sun –  
full sundry –  
medium wetJun – Jul  
lavender**SOLD OUT**

| LIGHT    | Hours of Sun Each Day |
|----------|-----------------------|
| Full Sun | 5 or more             |
| Part Sun | 2 – 5                 |
| Shade    | 2 or less             |

| SOIL MOISTURE |  |
|---------------|--|
| Dry           | soil feels dry and dusty or is cracked or difficult to dig |
| Medium        | soil is moist 4 – 6 inches down                            |
| Wet           | water stands in yard for several days after a heavy rain   |



# PART SUN

ITEM #

PLANT

HEIGHT &  
SPREAD

LIGHT

SOIL  
MOISTURE

BLOOM TIME  
& COLOR

SIZE

PRICE



54

prairie loosestrife  
(narrow-leaved loosestrife)  
*Lysimachia quadriflora*

H 2 – 3 ft  
S 2 – 3 ft

part sun –  
full sun

medium

Jun – Aug  
yellow

pint

\$5



~~55~~

prairie phlox  
*Phlox pilosa*

H 1 – 1.5 ft  
S 1 – 1.5 ft

part sun –  
full sun

dry –  
medium dry

May – Jul  
pink

**SOLD OUT**



56

prairie sunflower  
*Helianthus pauciflorus*

H 4 – 5 ft  
S 2 – 4 ft

part sun –  
full sun

dry – medium

Jul – Oct  
yellow

pint

\$5



~~57~~

~~58~~

purple coneflower  
*Echinacea purpurea*

H 2 – 4 ft  
S 2 – 3 ft

part sun –  
full sun

dry – medium

Jul – Aug  
purple

**SOLD OUT**  
**SOLD OUT**



~~59~~

purple joe pye weed  
*Eutrochium purpureum*

H 3 – 6 ft  
S 2 – 4 ft

part sun –  
full sun

medium – wet

Jul – Sep  
lavender

**SOLD OUT**

LIGHT  
Full Sun 5 or more  
Part Sun 2 – 5  
Shade 2 or less

SOIL MOISTURE  
Dry soil feels dry and dusty or is cracked or difficult to dig  
Medium soil is moist 4 – 6 inches down  
Wet water stands in yard for several days after a heavy rain

# PART SUN

ITEM #

PLANT

HEIGHT &  
SPREAD

LIGHT

SOIL  
MOISTURE

BLOOM TIME  
& COLOR

SIZE

PRICE



60

royal catchfly  
*Silene regia*

H 2 – 4 ft  
S 1.5 ft– 2 ft

part sun –  
full sun

dry –  
medium wet

Jun – Jul  
red

pint

\$5



~~61~~

shooting star  
*Dodecatheon meadia*

H 1 – 2 ft  
S 0.75 – 1 ft

part sun –  
full sun

medium

Apr – Jun  
white &  
lavender

**SOLD OUT**



~~62~~

Short's aster  
*Symphyotrichum shortii*

H 2 – 3 ft  
S 2 – 3 ft

part sun –  
shade

medium

Aug – Oct  
purple

**SOLD OUT**



63

sky blue aster  
*Symphyotrichum oolentangiense*

H 2 – 3 ft  
S 1.5 – 2.5 ft

part sun –  
full sun

dry – medium

Aug – Oct  
blue

pint

\$5



64

starry campion  
*Silene stellata*

H 1.5 – 2 ft  
S 0.5 – 1 ft

full sun –  
part sun

medium –  
medium wet

Jun – Jul  
white

pint

\$5

LIGHT  
Full Sun 5 or more  
Part Sun 2 – 5  
Shade 2 or less

SOIL MOISTURE  
Dry soil feels dry and dusty or is cracked or difficult to dig  
Medium soil is moist 4 – 6 inches down  
Wet water stands in yard for several days after a heavy rain

# PART SUN

ITEM #

PLANT

HEIGHT &  
SPREAD

LIGHT

SOIL  
MOISTURE

BLOOM TIME  
& COLOR

SIZE

PRICE



~~65~~

starry false  
Solomon's seal  
*Maianthemum stellatum*

H 1 – 2 ft  
S 0.75 – 1.5 ft

part sun –  
shade

medium

May – Jun  
white

**SOLD OUT**



~~66~~

swamp rose mallow  
*Hibiscus moscheutos*

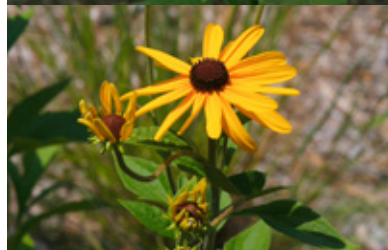
H 4 – 6 ft  
S 3 ft – 4 ft

part sun –  
full sun

wet

Jul – Sep  
pink – white

**SOLD OUT**



67

sweet black-eyed Susan  
*Rudbeckia subtomentosa*

H 3 – 5 ft  
S 1 – 2 ft

part sun –  
full sun

medium

Aug – Oct  
yellow & brown

pint

\$5



~~68~~

tall bellflower  
*Campanulastrum americana*

H 3 – 4 ft  
S 1.5 – 2 ft

part sun –  
shade

medium – wet

Jul – Sep  
purple

**SOLD OUT**



69

turk's cap lily  
(Michigan lily)  
*Lilium michiganense*

H 2 – 5 ft  
S 1 – 2 ft

part sun –  
full sun

medium – wet

Jun – Aug  
orange

pint

\$5



Forest Preserve District of DuPage County

LIGHT  
Full Sun 5 or more  
Part Sun 2 – 5  
Shade 2 or less

SOIL MOISTURE  
Dry soil feels dry and dusty or is cracked or difficult to dig  
Medium soil is moist 4 – 6 inches down  
Wet water stands in yard for several days after a heavy rain



# PART SUN

ITEM #

PLANT

HEIGHT &  
SPREAD

LIGHT

SOIL  
MOISTURE

BLOOM TIME  
& COLOR

SIZE

PRICE



70

white prairie clover  
*Dalea candida*

H 1 – 3 ft  
S 1 – 2 ft

part sun –  
full sun

dry –  
medium wet

Jun – Sep  
white

pint

\$5



71

wild bergamot  
*Monarda fistulosa*

H 2 – 4 ft  
S 2 – 3 ft

part sun –  
full sun

dry – medium

Jul – Sep  
lavender

pint

\$5

**SOLD OUT**



73

wild columbine  
*Aquilegia canadensis*

H 1 – 3 ft  
S 1 – 1.5 ft

part sun –  
shade

medium

Apr – Jun  
red & yellow

**SOLD OUT**  
gallon

**\$10**



75

wild geranium  
*Geranium maculatum*

H 1.5 – 2 ft  
S 1 – 1.5 ft

part sun –  
shade

medium

Apr – Jul  
pink

pint  
gallon

\$5

\$10



77

wild golden glow  
(green-headed coneflower)  
*Rudbeckia laciniata*

H 4 – 7 ft  
S 2 – 4 ft

part sun –  
shade

medium – wet

Jul – Oct  
yellow

pint

\$5

LIGHT  
Full Sun 5 or more  
Part Sun 2 – 5  
Shade 2 or less

SOIL MOISTURE  
Dry soil feels dry and dusty or is cracked or difficult to dig  
Medium soil is moist 4 – 6 inches down  
Wet water stands in yard for several days after a heavy rain



Forest Preserve District of DuPage County

# PART SUN

ITEM #

PLANT

HEIGHT &  
SPREAD

LIGHT

SOIL  
MOISTURE

BLOOM TIME  
& COLOR

SIZE

PRICE



78

wild hyacinth  
*Camassia scilloides*

H 1 – 3 ft  
S 1 – 2 ft

part sun –  
full sun

dry – medium

May – Jun  
white/blue/  
purple

pint

\$5



79

wild petunia  
(hairy ruellia)  
*Ruellia humilis*

H 1 – 2 ft  
S 1.5 – 2 ft

part sun –  
full sun

dry –  
medium dry

Jun – Aug  
violet

**SOLD OUT**



80

wild stonecrop  
*Sedum ternatum*

H 0.5 ft  
S 0.5 – 1 ft

part – full sun

dry – medium

Apr – May  
white

pint

\$5



81

yellow giant hyssop  
*Agastache nepetoides*

H 4 – 6 ft  
S 1 – 3 ft

part sun –  
full sun

dry –  
medium wet

Jul – Sep  
violet

pint

\$5



82

zigzag goldenrod  
*Solidago flexicaulis*

H 1 – 3 ft  
S 1 – 2 ft

part sun –  
shade

dry – wet

Aug – Sep  
yellow

pint

\$5

LIGHT  
Full Sun 5 or more  
Part Sun 2 – 5  
Shade 2 or less

SOIL MOISTURE  
Dry soil feels dry and dusty or is cracked or difficult to dig  
Medium soil is moist 4 – 6 inches down  
Wet water stands in yard for several days after a heavy rain

# SHADE

ITEM #

PLANT

HEIGHT &  
SPREAD

LIGHT

SOIL  
MOISTURE

BLOOM TIME  
& COLOR

SIZE

PRICE



83

big-leaved aster  
*Eurybia macrophylla*

H 1 – 3 ft  
S 3 ft– 4 ft

shade –  
part sun

medium – wet

Jul – Sep  
pale blue

pint

\$5



84

bloodroot  
*Sanguinaria canadensis*

H 0.5 – 0.75 ft  
S 0.25 – 0.5 ft

shade

medium

Mar – Apr  
white

**UNAVAILABLE**



85

blue cohosh  
*Caulophyllum thalictroides*

H 1 – 3 ft  
S 1.5 – 2 ft

shade

medium

Mar – May  
yellow-green

gallon

\$10



86

celandine poppy  
(wood poppy)  
*Stylophorum diphyllum*

H 1 – 1.5 ft  
S 0.75 – 1 ft

shade –  
part sun

medium –  
medium wet

Apr – Jun  
yellow

pint

\$5



87

elm-leaved goldenrod  
*Solidago ulmifolia*

H 2 – 4 ft  
S 1.5 – 2 ft

shade –  
part sun

dry – medium

Jul – Oct  
yellow

pint

\$5

LIGHT  
Full Sun 5 or more  
Part Sun 2 – 5  
Shade 2 or less

SOIL MOISTURE  
Dry soil feels dry and dusty or is cracked or difficult to dig  
Medium soil is moist 4 – 6 inches down  
Wet water stands in yard for several days after a heavy rain



## SHADE

ITEM #

PLANT

HEIGHT &  
SPREAD

LIGHT

SOIL  
MOISTUREBLOOM TIME  
& COLOR

SIZE

PRICE

~~88~~

feathery false  
Solomon's seal  
*Maianthemum racemosum*

H 1 – 3 ft  
S 1 – 2 ft

shade –  
part sun

medium wet

May – Jun  
white

**UNAVAILABLE**

89

jack-in-the-pulpit  
*Arisaema triphyllum*

H 1 – 2 ft  
S 1 – 1.5 ft

shade –  
part sun

medium – wet

Apr – May  
green & purple

pint

\$5



90

mayapple  
*Podophyllum peltatum*

H 1 – 1.5 ft  
S 0.75 – 1 ft

shade –  
part sun

medium wet

May  
white

gallon

\$10



91

smooth Solomon's seal  
*Polygonatum biflorum*

H 1 – 3 ft  
S 1 – 1.5 ft

shade –  
part sun

medium – wet

May – Jul  
greenish white

pint

\$5

~~92~~

turtlehead  
*Chelone glabra*

H 2 – 3 ft  
S 1.5 – 2.5 ft

shade –  
part sun

medium – wet

Jul – Sep  
cream

**SOLD OUT**

| LIGHT    | Hours of Sun Each Day |
|----------|-----------------------|
| Full Sun | 5 or more             |
| Part Sun | 2 – 5                 |
| Shade    | 2 or less             |

| SOIL MOISTURE |  |
|---------------|--|
| Dry           | soil feels dry and dusty or is cracked or difficult to dig |
| Medium        | soil is moist 4 – 6 inches down                            |
| Wet           | water stands in yard for several days after a heavy rain   |

# SHADE

ITEM #

PLANT

HEIGHT &  
SPREAD

LIGHT

SOIL  
MOISTURE

BLOOM TIME  
& COLOR

SIZE

PRICE



~~93~~  
~~94~~

Virginia bluebells  
*Mertensia virginica*

H 1.5 – 2 ft  
S 1.5 – 2 ft

shade –  
part sun

wet

Apr – May  
blue

**SOLD OUT**  
**SOLD OUT**



95

Virginia waterleaf  
*Hydrophyllum virginianum*

H 1.5 – 2 ft  
S 1 – 3 ft

shade

medium

Apr – May  
blue

pint

\$5



96

white snakeroot  
*Ageratina altissima*

H 2 – 3 ft  
S 1.5 – 2 ft

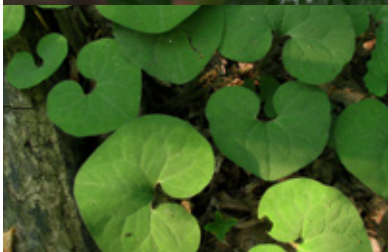
shade –  
part sun

medium

Aug – Oct  
white

pint

\$5



97

wild ginger  
*Asarum canadense*

H 0.5 – 1 ft  
S 1 – 1.5 ft

shade

medium – wet

Apr – Jun  
dark red

pint

\$5



~~98~~  
99

woodland phlox  
*Phlox divaricata*

H 0.75 – 1 ft  
S 0.75 – 1 ft

shade –  
part sun

medium

Apr – Jun  
violet blue

**SOLD OUT**  
gallon \$10

LIGHT  
Full Sun 5 or more  
Part Sun 2 – 5  
Shade 2 or less

SOIL MOISTURE  
Dry soil feels dry and dusty or is cracked or difficult to dig  
Medium soil is moist 4 – 6 inches down  
Wet water stands in yard for several days after a heavy rain

# MILKWEEDS

ITEM #

PLANT

HEIGHT &  
SPREAD

LIGHT

SOIL  
MOISTURE

BLOOM TIME  
& COLOR

SIZE

PRICE



100  
~~101~~

butterfly weed  
*Asclepias tuberosa*

H 2 – 3 ft  
S 1 – 2 ft

full sun

medium

Jun – Aug  
orange

pint  
**SOLD OUT**

\$5



102

common milkweed  
*Asclepias syriaca*

H 3 – 5 ft  
S 1 – 2 ft

full sun

medium – dry

Jun – Aug  
pink

pint

\$5



103

poke milkweed  
*Asclepias exaltata*

H 3 – 5 ft  
S 1 – 2 ft

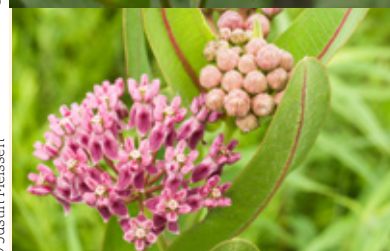
part sun –  
shade

medium – dry

Jul – Aug  
white

pint

\$5



104

prairie milkweed  
*Asclepias sullivantii*

H 3 – 5 ft  
S 1 ft

full sun

medium

Jun – Aug  
pink & yellow

pint

\$5



105  
~~106~~

swamp milkweed  
*Asclepias incarnata*

H 3 – 4 ft  
S 1.5 – 2 ft

full sun –  
part sun

wet –  
medium wet

Jun – Aug  
red-pink

pint  
**SOLD OUT**

\$5



Forest Preserve District of DuPage County

LIGHT  
Full Sun 5 or more  
Part Sun 2 – 5  
Shade 2 or less

SOIL MOISTURE  
Dry soil feels dry and dusty or is cracked or difficult to dig  
Medium soil is moist 4 – 6 inches down  
Wet water stands in yard for several days after a heavy rain



# MILKWEEDS

ITEM #

PLANT

HEIGHT &  
SPREAD

LIGHT

SOIL  
MOISTURE

BLOOM TIME  
& COLOR

SIZE

PRICE

107

whorled milkweed  
*Asclepias verticillata*

H 1.5 – 2.5 ft  
S 1 – 2 ft

full sun –  
part sun

dry – medium

Jul – Sep  
white

pint

\$5

© Joshua Mayer



Forest Preserve District of DuPage County

| LIGHT    | Hours of Sun Each Day |
|----------|-----------------------|
| Full Sun | 5 or more             |
| Part Sun | 2 – 5                 |
| Shade    | 2 or less             |

| SOIL MOISTURE |  |
|---------------|--|
| Dry           | soil feels dry and dusty or is cracked or difficult to dig |
| Medium        | soil is moist 4 – 6 inches down                            |
| Wet           | water stands in yard for several days after a heavy rain   |

| GRASSES   |  | ITEM #                | PLANT   | HEIGHT & SPREAD                | LIGHT                  | SOIL MOISTURE       | BLOOM TIME & COLOR        | SIZE                      | PRICE                  |
|---|--|-----------------------|---|--------------------------------|------------------------|---------------------|---------------------------|---------------------------|------------------------|
|  |  | 108<br><del>109</del> | big bluestem<br><i>Andropogon gerardii</i>    | H 3 – 8 ft<br>S 2 – 3 ft       | full sun               | dry – medium        | Aug – Sep<br>purplish red | pint<br><del>gallon</del> | \$5<br><del>\$10</del> |
|   |  | 110                   | bottlebrush grass<br><i>Elymus hystrix</i>    | H 2 – 3 ft<br>S 1 – 1.5 ft     | part sun –<br>full sun | dry – medium        | Jun – Jul<br>green-brown  | pint                      | \$5                    |
|   |  | <del>111</del>        | common oak sedge<br><i>Carex pensylvanica</i> | H 0.75 – 1 ft<br>S 1.5 – 2 ft  | shade –<br>part sun    | dry                 | Apr – May<br>green        | <b>SOLD OUT</b>           |                        |
|   |  | <del>112</del>        | curly-styled wood sedge<br><i>Carex rosea</i> | H 0.5 – 1 ft<br>S 0.5 – 1.5 ft | shade –<br>part sun    | dry – medium        | May – Jun<br>green        | <b>SOLD OUT</b>           |                        |
|   |  | 113                   | Indian grass<br><i>Sorghastrum nutans</i>     | H 3 – 6 ft<br>S 2 – 3 ft       | full sun               | dry –<br>medium wet | Aug – Sep<br>yellow       | pint                      | \$5                    |



| LIGHT    | Hours of Sun Each Day |
|----------|-----------------------|
| Full Sun | 5 or more             |
| Part Sun | 2 – 5                 |
| Shade    | 2 or less             |

| SOIL MOISTURE |  |
|---------------|--|
| Dry           | soil feels dry and dusty or is cracked or difficult to dig |
| Medium        | soil is moist 4 – 6 inches down                            |
| Wet           | water stands in yard for several days after a heavy rain   |

# GRASSES

ITEM #

PLANT

HEIGHT &  
SPREAD

LIGHT

SOIL  
MOISTURE

BLOOM TIME  
& COLOR

SIZE

PRICE



114

little bluestem  
*Schizachyrium scoparium*

H 2 – 3 ft  
S 1.5 – 2 ft

full sun

dry – medium

Aug – Sep  
purple-bronze

pint

\$5



115

long-beaked sedge  
*Carex sprengelii*

H 1.5 – 2 ft  
S 1.5 – 2 ft

shade

medium wet –  
wet

May  
green

**SOLD OUT**



116

palm sedge  
*Carex muskingumensis*

H 2 – 3 ft  
S 2 – 3 ft

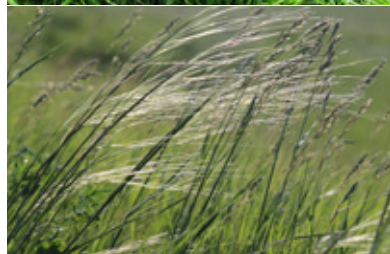
part sun –  
full sun

medium wet

May – July  
brown

pint

\$5



117

porcupine grass  
*Hesperostipa spartea*

H 3 – 4 ft  
S 1 ft

part sun –  
full sun

dry – medium

May – Jun  
green

pint

\$5



118

porcupine sedge  
*Carex hystericina*

H 2 – 3 ft  
S 1 – 1.5 ft

part sun –  
full sun

wet

May – Jun  
brown

pint

\$5

LIGHT  
Full Sun 5 or more  
Part Sun 2 – 5  
Shade 2 or less

SOIL MOISTURE  
Dry soil feels dry and dusty or is cracked or difficult to dig  
Medium soil is moist 4 – 6 inches down  
Wet water stands in yard for several days after a heavy rain



# GRASSES

ITEM #

PLANT

HEIGHT &  
SPREAD

LIGHT

SOIL  
MOISTURE

BLOOM TIME  
& COLOR

SIZE

PRICE



119

prairie brome  
*Bromus kalmia*

H 2 – 3 ft  
S 1 – 1.5 ft

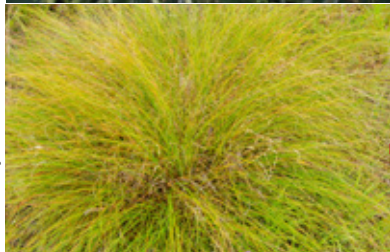
part sun –  
full sun

dry – medium

Jun – Aug  
green

pint

\$5



120

prairie dropseed  
*Sporobolus heterolepis*

H 2 – 3 ft  
S 2 – 3 ft

full sun

dry – medium

Aug – Sep  
pink & brown

pint

\$5

**SOLD OUT**



122

purple love grass  
*Eragrostis spectabilis*

H 1 – 2 ft  
S 1 – 2 ft

full sun

dry – medium

Jul – Aug  
reddish purple

**SOLD OUT**



123

river oats  
*Chasmanthium latifolium*

H 2 – 4 ft  
S 1 – 2.5 ft

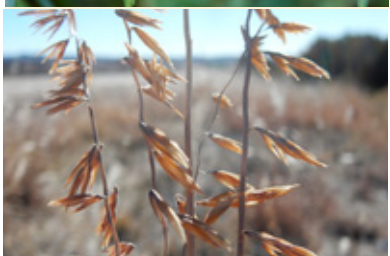
part sun –  
full sun

medium – wet

Aug – Sep  
green

pint

\$5



124

sideoats gramma  
*Bouteloua curtipendula*

H 2 – 3 ft  
S 1.5 – 3 ft

full sun

dry – medium

Jul – Aug  
purplish

pint

\$5

LIGHT  
Full Sun 5 or more  
Part Sun 2 – 5  
Shade 2 or less

SOIL MOISTURE  
Dry soil feels dry and dusty or is cracked or difficult to dig  
Medium soil is moist 4 – 6 inches down  
Wet water stands in yard for several days after a heavy rain

# GRASSES

ITEM #

PLANT

HEIGHT &  
SPREAD

LIGHT

SOIL  
MOISTURE

BLOOM TIME  
& COLOR

SIZE

PRICE



~~125~~

straight-styled  
wood sedge  
*Carex radiata*

H 0.75 – 1 ft  
S 0.75 – 1 ft

shade –  
part sun

medium –  
medium wet

Apr – May  
green

**SOLD OUT**



126

switch grass  
*Panicum virgatum*

H 4 – 6 ft  
S 2 – 3 ft

part sun –  
full sun

medium dry  
– medium

Jul  
red

pint

\$5



127

Virginia wild rye  
*Elymus virginicus*

H 3 – 5 ft  
S 1.5 – 2 ft

part sun –  
full sun

dry – medium

Jul – Aug  
green

pint

\$5

© Friends of the Prairie Learning  
Center and Neal Smith NWR  
© Matt Lavin



Forest Preserve District of DuPage County

| LIGHT    | Hours of Sun Each Day |
|----------|-----------------------|
| Full Sun | 5 or more             |
| Part Sun | 2 – 5                 |
| Shade    | 2 or less             |

| SOIL MOISTURE |  |
|---------------|--|
| Dry           | soil feels dry and dusty or is cracked or difficult to dig |
| Medium        | soil is moist 4 – 6 inches down                            |
| Wet           | water stands in yard for several days after a heavy rain   |

# FERNS

ITEM #

PLANT

HEIGHT &  
SPREAD

LIGHT

SOIL  
MOISTURE

BLOOM TIME  
& COLOR

SIZE

PRICE



128

Christmas fern  
*Polystichum acrostichoides*

H 1 ft – 2 ft  
S 1 – 2 ft

shade –  
part sun

dry – medium

nonflowering

gallon

\$10



129

lady fern  
*Athyrium filix-femina*

H 1 – 3 ft  
S 1 – 2.5 ft

shade –  
part sun

medium wet

nonflowering

gallon

\$10



130

ostrich fern  
*Matteuccia struthiopteris*

H 3 – 6 ft  
S 2 – 3 ft

shade –  
part sun

medium – wet

nonflowering

gallon

\$10



131

sensitive fern  
*Onoclea sensibilis*

H 2 – 3 ft  
S 1.5 – 2 ft

shade –  
part sun

medium – wet

nonflowering

gallon

\$10

© NC Orchid

© Peggy A. Lopipieri-Langmo

© harumkoh

© Joshua Mayer



Forest Preserve District of DuPage County

| LIGHT    | Hours of Sun Each Day |
|----------|-----------------------|
| Full Sun | 5 or more             |
| Part Sun | 2 – 5                 |
| Shade    | 2 or less             |

| SOIL MOISTURE |  |
|---------------|--|
| Dry           | soil feels dry and dusty or is cracked or difficult to dig |
| Medium        | soil is moist 4 – 6 inches down                            |
| Wet           | water stands in yard for several days after a heavy rain   |



# VINES

ITEM #

PLANT

HEIGHT &  
SPREAD

LIGHT

SOIL  
MOISTURE

BLOOM TIME  
& COLOR

SIZE

PRICE



~~132~~

virgin's bower  
*Clematis virginiana*

H 8 - 12 ft  
S 6 - 8 ft

full sun -  
shade

medium -  
medium wet

Jul - Sep  
white

**SOLD OUT**

© Melissa McMasters



Forest Preserve District of DuPage County

| LIGHT    | Hours of Sun Each Day |
|----------|-----------------------|
| Full Sun | 5 or more             |
| Part Sun | 2 - 5                 |
| Shade    | 2 or less             |

| SOIL MOISTURE |  |
|---------------|--|
| Dry           | soil feels dry and dusty or is cracked or difficult to dig |
| Medium        | soil is moist 4 - 6 inches down                            |
| Wet           | water stands in yard for several days after a heavy rain   |

# SHRUBS

ITEM #

PLANT

HEIGHT &  
SPREAD

LIGHT

SOIL  
MOISTUREBLOOM TIME  
& COLOR

SIZE

PRICE

~~133~~

American hazelnut  
(American filbert)  
*Corylus americana*

H 8 – 10 ft  
S 8 – 10 ft

full sun –  
part sun

medium – wet

Apr  
green

**SOLD OUT**

~~134~~

blackhaw  
*Viburnum prunifolium*

H 12 – 15 ft  
S 6 – 12 ft

full sun –  
part sun

dry – medium

May – Jun  
white

**SOLD OUT**

~~135~~

buttonbush  
*Cephalanthus occidentalis*

H 8 – 12 ft  
S 6 – 8 ft

full sun –  
part sun

moist

Jun  
white

**SOLD OUT**

~~136~~

early wild rose  
*Rosa blanda*

H 3 – 5 ft  
S 3 – 4 ft

full sun –  
part sun

dry – medium

May – Jul  
pink

**SOLD OUT**



137

elderberry  
*Sambucus canadensis*

H 8 – 12 ft  
S 6 – 8 ft

full sun –  
part sun

dry – medium

Jun  
white

5 gallon \$20

LIGHT  
Full Sun 5 or more  
Part Sun 2 – 5  
Shade 2 or less

SOIL MOISTURE  
Dry soil feels dry and dusty or is cracked or difficult to dig  
Medium soil is moist 4 – 6 inches down  
Wet water stands in yard for several days after a heavy rain



# SHRUBS

ITEM #

PLANT

HEIGHT &  
SPREAD

LIGHT

SOIL  
MOISTURE

BLOOM TIME  
& COLOR

SIZE

PRICE



~~130~~

Illinois rose  
*Rosa setigera*

H 6 – 8 ft  
S 8 – 10 ft

full sun –  
part sun

medium –  
medium wet

Jun  
pink & gold

**SOLD OUT**



~~139~~

Kalm's St. John's wort  
*Hypericum kalmianum*

H 2 – 3 ft  
S 2 – 3 ft

full sun

medium wet –  
wet

Jul – Aug  
yellow

**SOLD OUT**



~~140~~

New Jersey tea  
*Ceanothus americanus*

H 2 ft  
S 3 ft

full sun –  
part sun

dry – medium

Jun – Aug  
white

**SOLD OUT**



~~141~~

red osier dogwood  
*Cornus sericea*

H 8 – 10 ft  
S 2 – 5 ft

part sun –  
full sun

medium – wet

May – Jun  
white

**SOLD OUT**



~~142~~

spicebush  
*Lindera benzoin*

H 6 – 12 ft  
S 6 – 12 ft

full sun –  
part sun

medium

Mar  
yellow

**SOLD OUT**

LIGHT  
Full Sun 5 or more  
Part Sun 2 – 5  
Shade 2 or less

SOIL MOISTURE  
Dry soil feels dry and dusty or is cracked or difficult to dig  
Medium soil is moist 4 – 6 inches down  
Wet water stands in yard for several days after a heavy rain



# SHRUBS

ITEM #

PLANT

HEIGHT &  
SPREAD

LIGHT

SOIL  
MOISTURE

BLOOM TIME  
& COLOR

SIZE

PRICE



~~143~~

wild hydrangea  
*Hydrangea arborescens*

H 3 – 5 ft  
S 3 – 5 ft

shade –  
part sun

medium – wet

Jun – Sep  
white

**SOLD OUT**



~~144~~

witch hazel  
*Hamamelis virginiana*

H 10 – 15 ft  
S 10 – 25 ft

full sun –  
part sun

medium

Oct – Mar  
yellow

**SOLD OUT**



Forest Preserve District of DuPage County

| LIGHT    | Hours of Sun Each Day |
|----------|-----------------------|
| Full Sun | 5 or more             |
| Part Sun | 2 – 5                 |
| Shade    | 2 or less             |

| SOIL MOISTURE |  |
|---------------|--|
| Dry           | soil feels dry and dusty or is cracked or difficult to dig |
| Medium        | soil is moist 4 – 6 inches down                            |
| Wet           | water stands in yard for several days after a heavy rain   |

# TREES

ITEM #

PLANT

HEIGHT &  
SPREAD

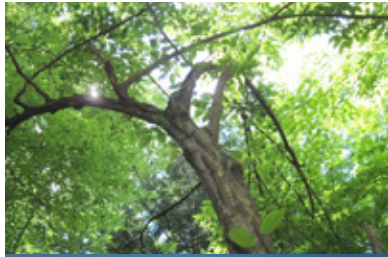
LIGHT

SOIL  
MOISTURE

BLOOM TIME  
& COLOR

SIZE

PRICE



145

blue beech  
(American hornbeam)  
*Carpinus caroliniana*

H 20 – 30 ft  
S 20 – 30 ft

part sun –  
shade

medium – wet

Mar – May  
green

5 gallon

\$25



146

bur oak  
*Quercus macrocarpa*

H 60 – 85 ft  
S 60 – 100 ft

full sun

dry – medium

Apr – May  
green

5 gallon

\$25



147

hackberry  
*Celtis occidentalis*

H 50 – 60 ft  
S 40 – 60 ft

full sun –  
part sun

medium –  
medium wet

Apr – May  
green

5 gallon

\$25



148

Ohio buckeye  
*Aesculus glabra*

H 30 – 60 ft  
S 15 – 30 ft

full sun –  
part sun

medium –  
moist

Mar – Apr  
white

5 gallon

\$25



149

pawpaw  
*Asimina triloba*

H 15 – 30 ft  
S 15 – 30 ft

full sun –  
part sun

medium – wet

Apr – May  
burgundy

5 gallon

\$25

| LIGHT    | Hours of Sun Each Day |
|----------|-----------------------|
| Full Sun | 5 or more             |
| Part Sun | 2 – 5                 |
| Shade    | 2 or less             |

| SOIL MOISTURE |  |
|---------------|--|
| Dry           | soil feels dry and dusty or is cracked or difficult to dig |
| Medium        | soil is moist 4 – 6 inches down                            |
| Wet           | water stands in yard for several days after a heavy rain   |



Forest Preserve District of DuPage County

# TREES

ITEM #

PLANT

HEIGHT &  
SPREAD

LIGHT

SOIL  
MOISTURE

BLOOM TIME  
& COLOR

SIZE

PRICE



~~150~~

redbud  
*Cercis canadensis*

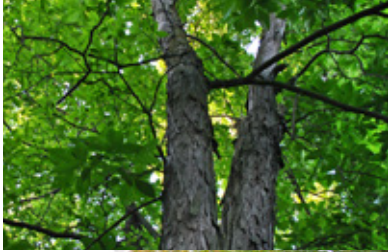
H 20 – 25 ft  
S 25 – 30 ft

part sun –  
full sun

medium

Apr  
pink

**SOLD OUT**



151

shagbark hickory  
*Carya ovata*

H 70 – 90 ft  
S 50 – 70 ft

full sun –  
part sun

medium

Apr – May  
green-yellow

5 gallon

\$25



152

sugar maple  
*Acer saccharum*

H 40 – 80 ft  
S 30 – 60 ft

full sun –  
part sun

medium

Mar – Apr  
yellow-green

5 gallon

\$25



153

white oak  
*Quercus alba*

H 50 – 80 ft  
S 50 – 80 ft

full sun

dry – medium

May  
green

5 gallon

\$25



~~154~~

wild plum  
*Prunus americana*

H 15 – 25 ft  
S 15 – 20 ft

full sun –  
part sun

dry – medium

Mar – Apr  
white

**SOLD OUT**

| LIGHT    | Hours of Sun Each Day |
|----------|-----------------------|
| Full Sun | 5 or more             |
| Part Sun | 2 – 5                 |
| Shade    | 2 or less             |

| SOIL MOISTURE |  |
|---------------|--|
| Dry           | soil feels dry and dusty or is cracked or difficult to dig |
| Medium        | soil is moist 4 – 6 inches down                            |
| Wet           | water stands in yard for several days after a heavy rain   |